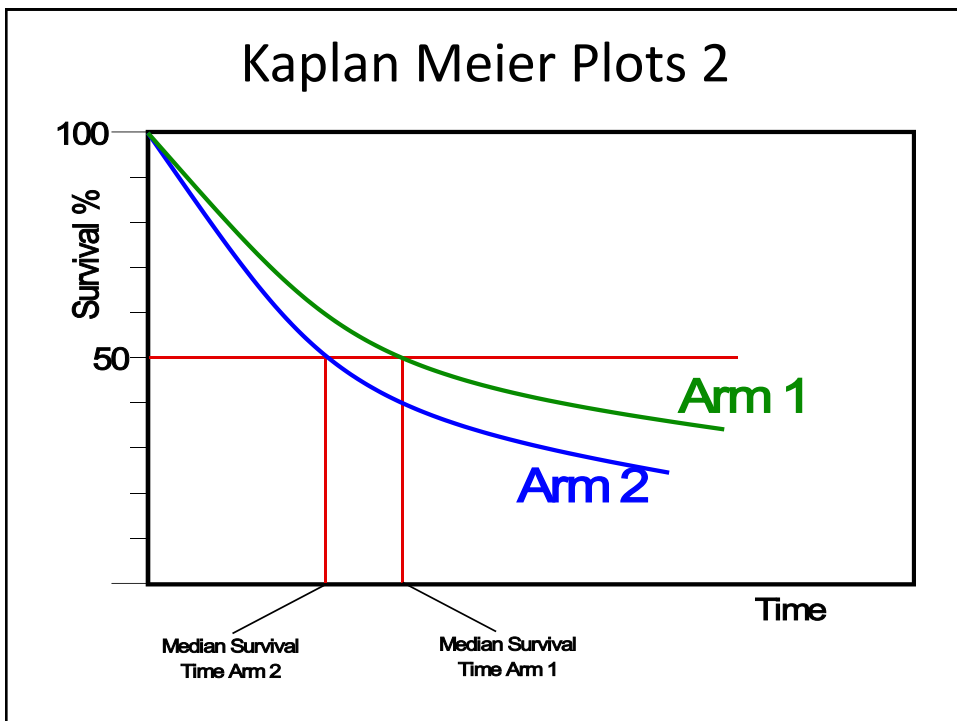
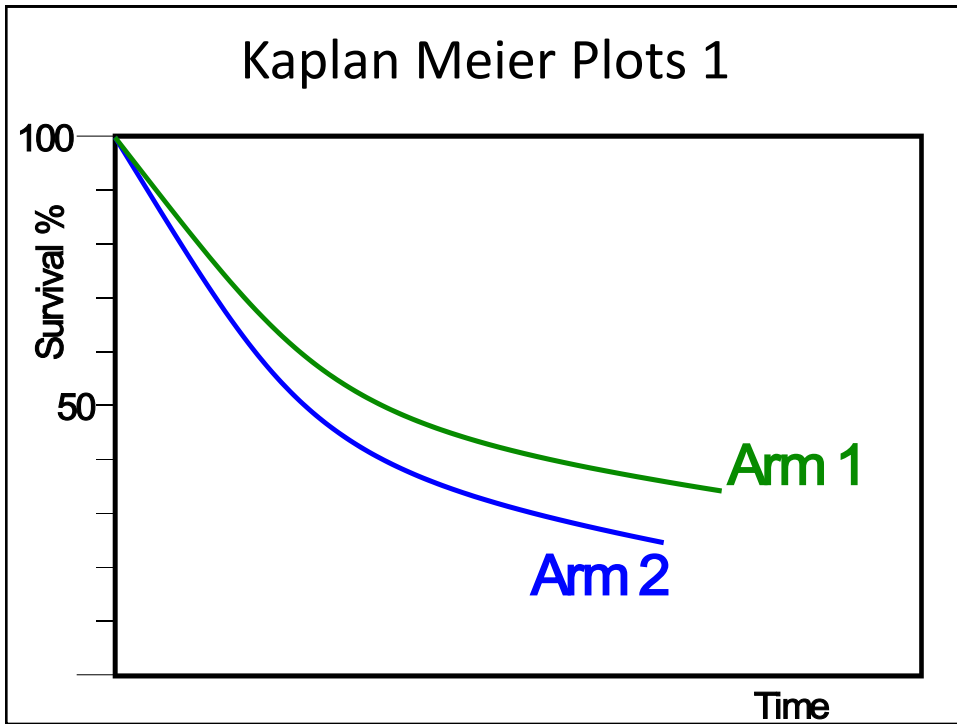


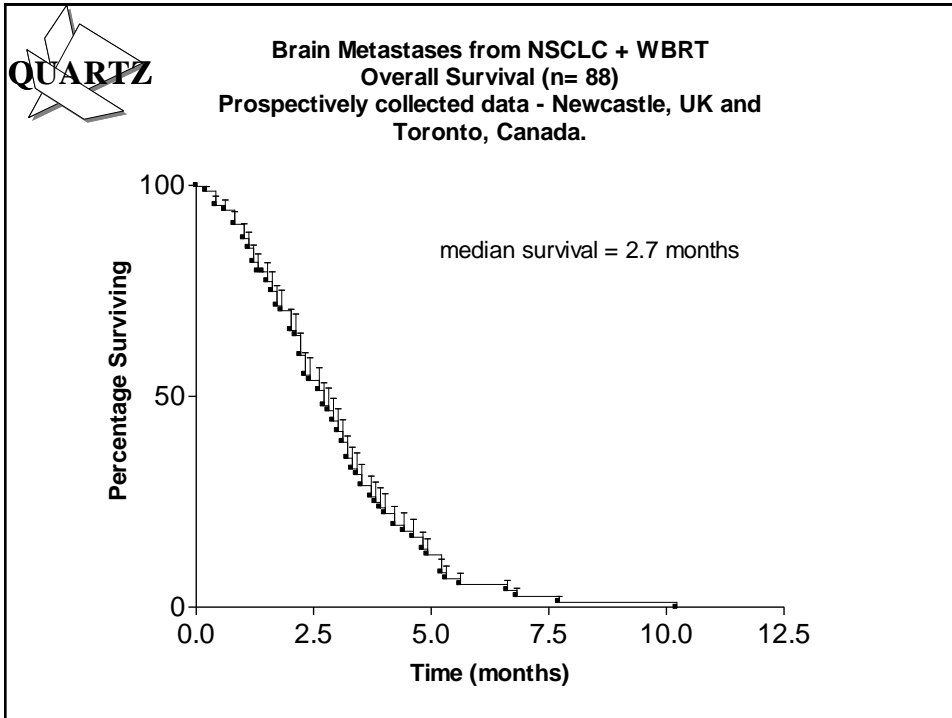
So What is a Kaplan-Meier Plot Anyway?

David Ardron – carer.
NCIN Conference June 2012
Birmingham.

What is the message from me today!

- Things are getting better
- Better information and intelligence is driving the improvement
- Better information leads to personalised treatments...
- One man's meat is....
- Talk to the patients....get to know the individuals who can help you....
- Keep asking questions...





James Lind 1716-1794.....

Circumnavigation of Anson 1740.

“Anson left with eight ships and a total complement of 1,955 men. He returned three years and nine months later with one ship and 145 members of the original crew.

Scurvy had killed nearly 1,300 of his men.”

- “The Golden Ocean”, by Patrick O’Brian
- James Lind, Naval surgeon, 1747 HMS Salisbury Channel Fleet.
- Bay of Biscay 1st Clinical Trial? on Scurvy
- Six arms of the trial , 2 scorbutic sailors in each arm

“Scurvy and Anson's Voyage
Round the World: 1740-1744.
An Analysis of the
Royal Navy's Worst Outbreak.”
BY ELEANORA C. GORDON, M.D.*

http://www.mv.helsinki.fi/home/hemila/history/Gordon_1984.pdf

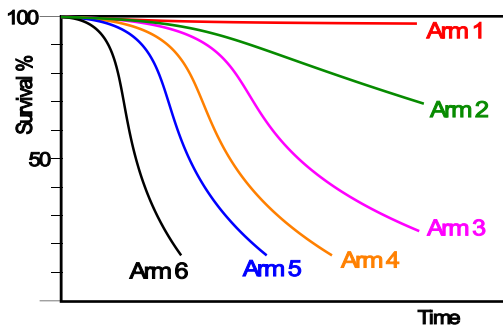
Table IV

BRITISH SEAMAN'S RATIONS
ADMIRALTY VICTUALLING OFFICE MID-EIGHTEENTH

Biscuit 1 lb./day	Pease ½ pint 2 days/wk.
Beer 1 gallon/day	Butter 2 oz. 4 days/wk.
Beef 2 lb. 2 days/wk.	Cheese 4 oz. 3 days/wk.
Pork 1 lb. 2 days/wk.	Oatmeal 1 pint 3 days/wk.

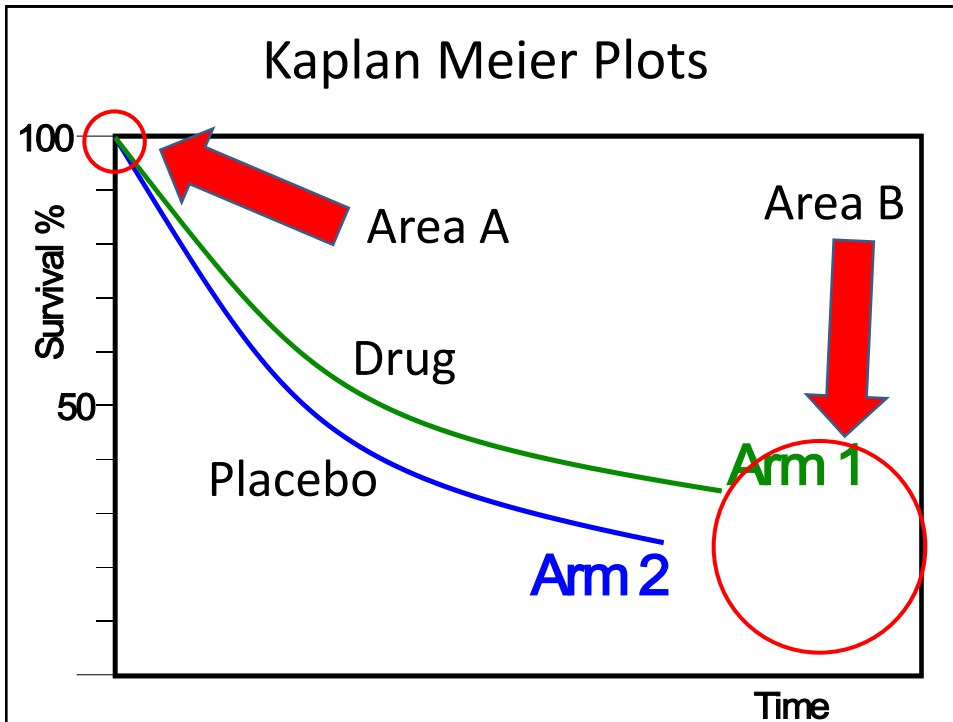
Christopher Lloyd and Jack L. S. Coulter, *Medicine and the Navy*,
vol. 3 (Edinburgh: E. S. Livingstone, 1961), 81.

James Lind 1716-1794.....



- Pairs of scorbutic sailors were given a “normal” naval diet plus one of six therapeutics...

- Arm 6 sulphuric acid
- Arm 5 vinegar
- Arm 4 seawater
- Arm 3 spicy paste and barley water
- Arm 2 cider
- Arm 1 oranges and lemons,
- No PIL? No ethical approval, only 2 sailors gave consent.....and



Patient and carer advocates...

Where do they fall on the Kaplan Meier Plots?

Lady (about my age) at the
Roy Castle Foundation Patients Meeting
in Glasgow, 2009.....

Her husband and my father....

How long do people survive?

There has never been a surgical trial in lung cancer.

Phillip Ardron and lung cancer....

Started coughing in summer of 1995 and coughed every ten seconds for the rest of his life.

39 visits to primary care, linctus, inhalers etc.

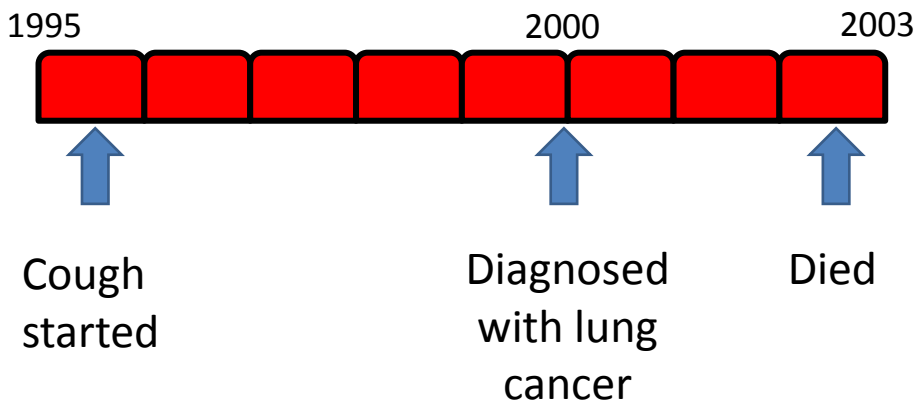
Diagnosed November 1999 as lung cancer

Admitted for surgery January 2000. Cancelled.

Radical Radiotherapy February 2000.

Died July 2007.

PA's Lung Cancer Timeline



Questions

When did the cancer start to grow?

If it started to grow in 1995, when could it have been diagnosed?

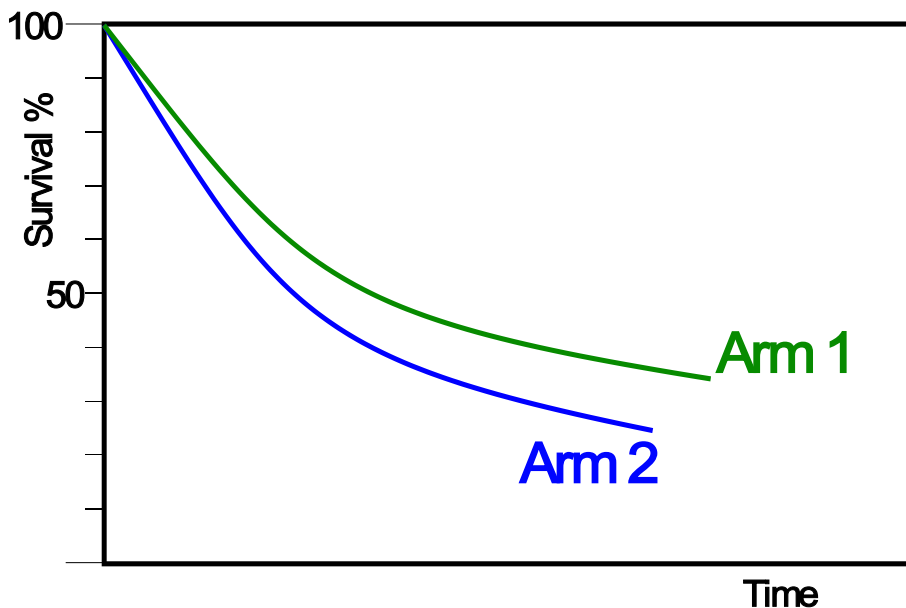
Until what time was it operable?

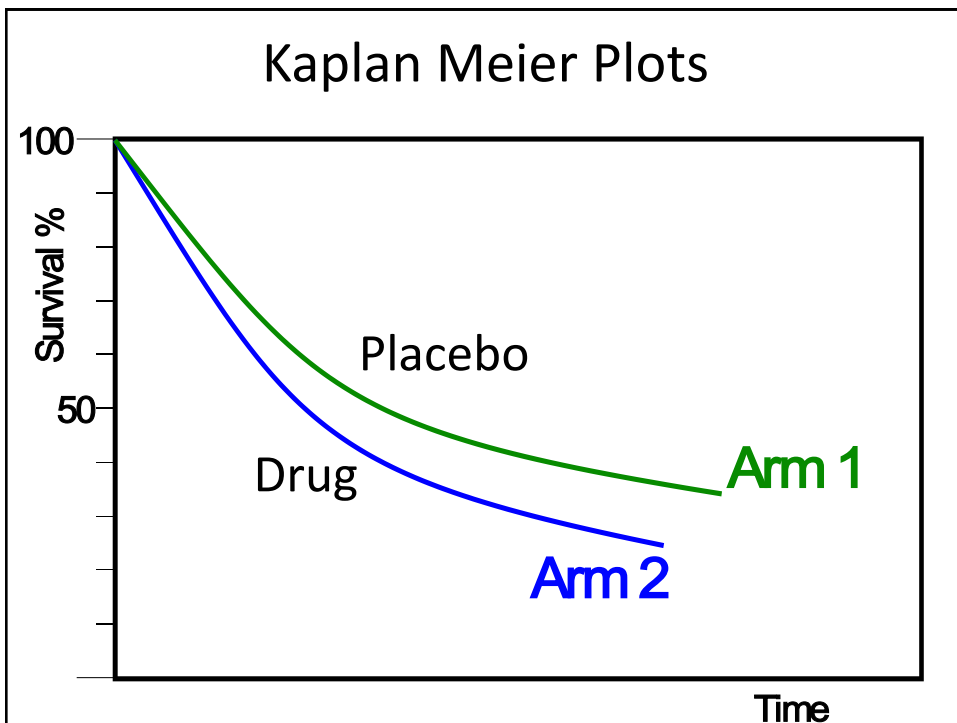
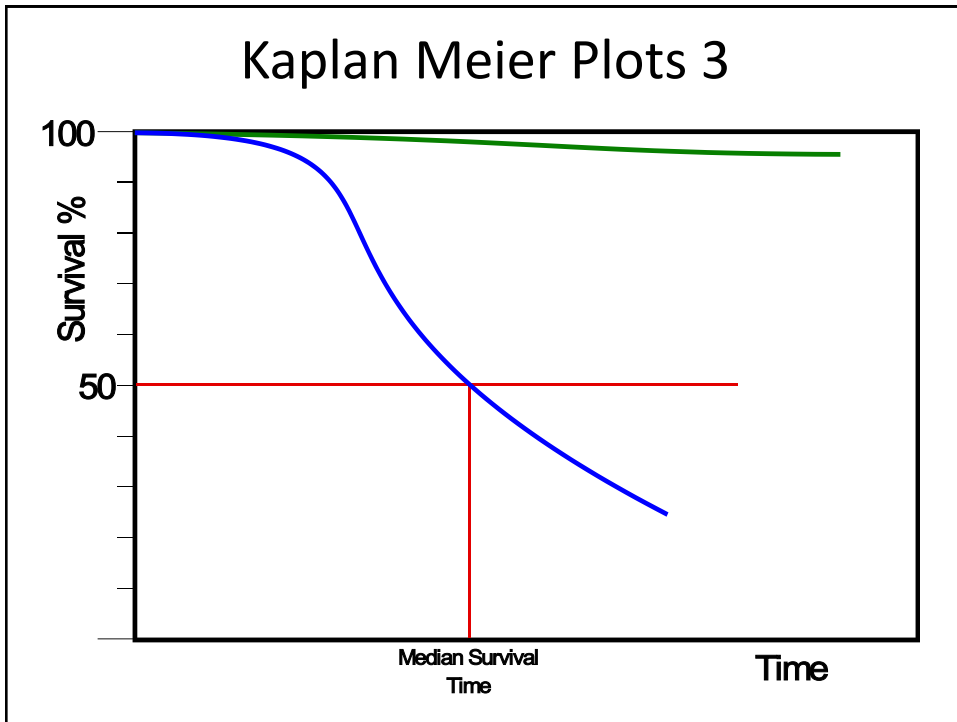
If my dad had had surgery, how long could he have been reasonably expected to live?

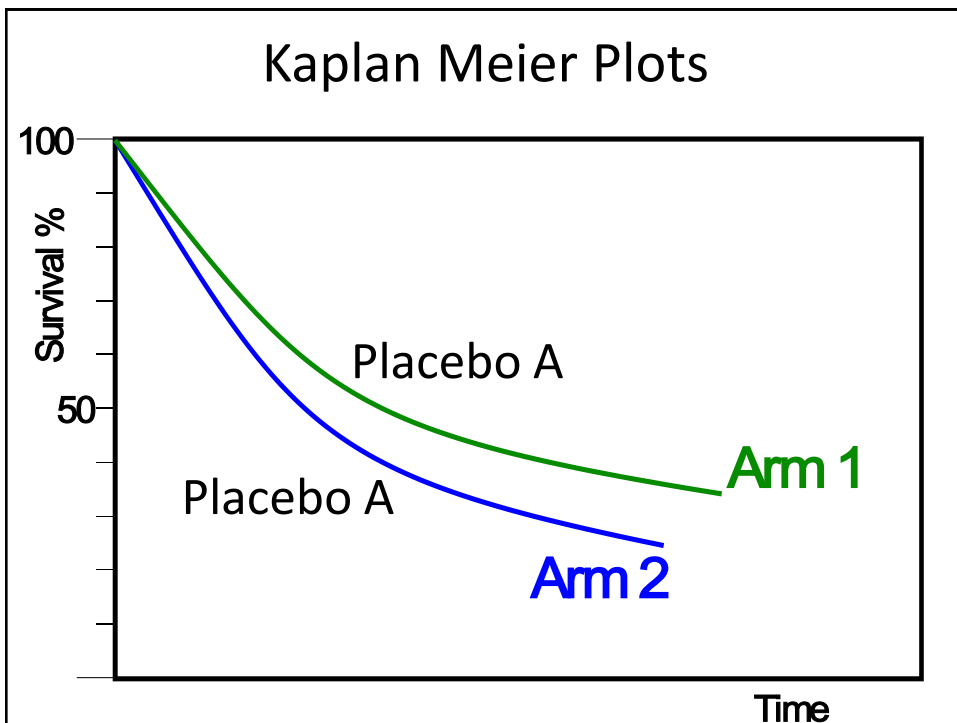
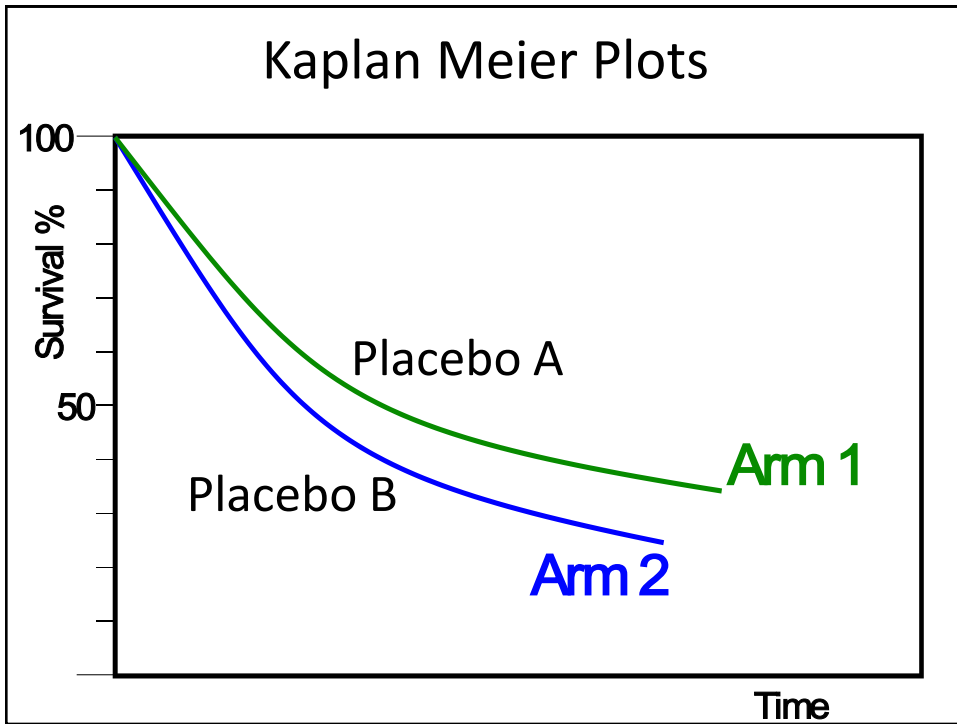
Was he a 1 year survivor, or a five year survivor?

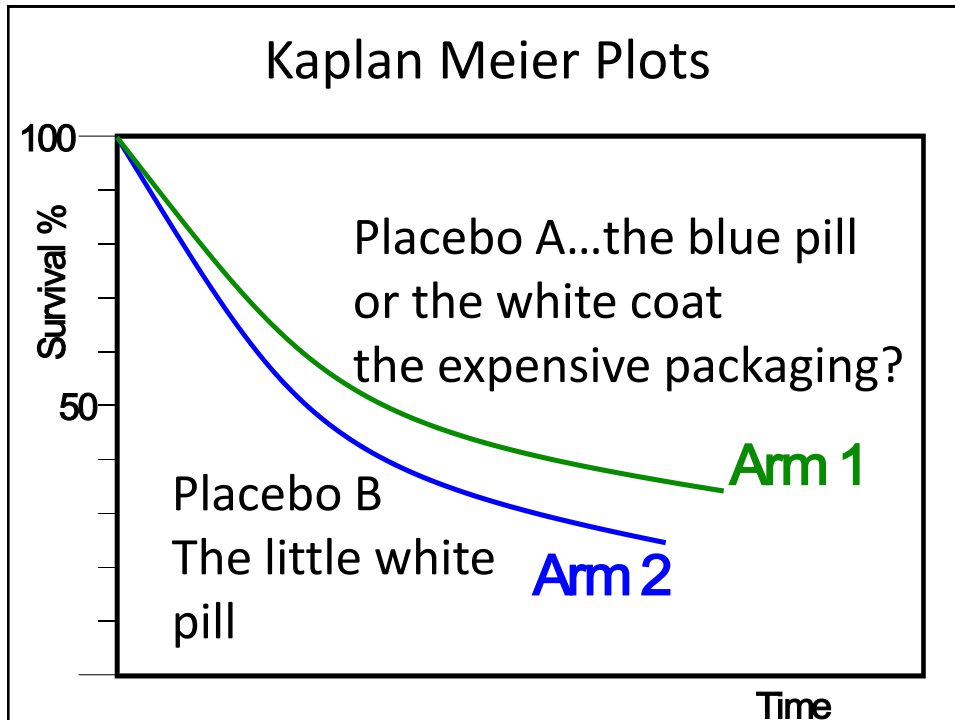
Do we need a surgical trial?

Kaplan Meier Plots 1









- ### Kaplan Meier Plots
- Patients invest a vast amount in these trials
GEMCAP trial..crossover points and pinch points
 - They are often dispirited by the results
 - Please thank them for their participation
 - Be aware of the need for feedback
 - Publish all the results and not just the positive ones
 - Quality Improvement...start with the worst case and solve that...Lung and Pancreas....

James Lind Newsletter May 2012.....

Direct patient involvement in deciding what research to fund and what outcomes to measure is absent in the (wound care) sector. A start has recently been made with the JLA Pressure Ulcer Partnership. In the absence of patient involvement, well conducted, controlled trials and peer review and publication processes that are independent and freed from vested interests, clinicians are attending conferences filled with marketing fog, not really knowing whether the innovations that profit industry are providing the outcomes that mean most to patients.

Don't forget

Side effects of treatments

Life style choices

Quality of Life

Complementary therapies and herbal remedies

Cancer and cancer...

Thank you to.....

Craig Bloodworth of The Information Lab.

Roger Wilson, Sue Ballard and Alf Oliver.

Myrna Gray and Tom Haswell.

And all the other members of the NCRI CLG....

Rachael Brannan and Michael Chapman

Karen Poole and Karen Collins

NCRI, NCRN and NCIN.

My mam and dad....draw the curve...