

Changing Cancer Data Collection: Creativity with Data Flows

Di Riley

Lead for Clinical Outcomes

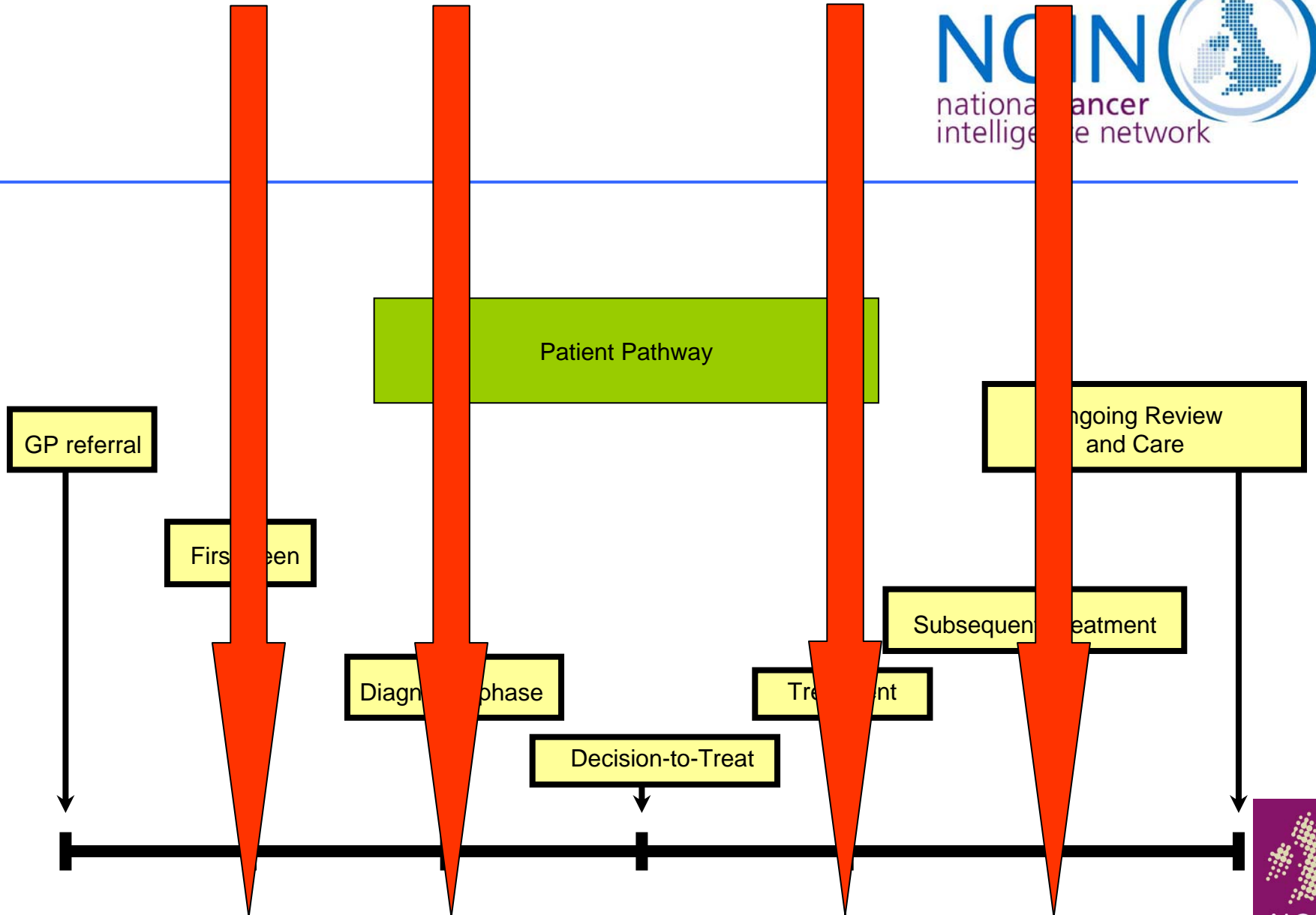
NCIN

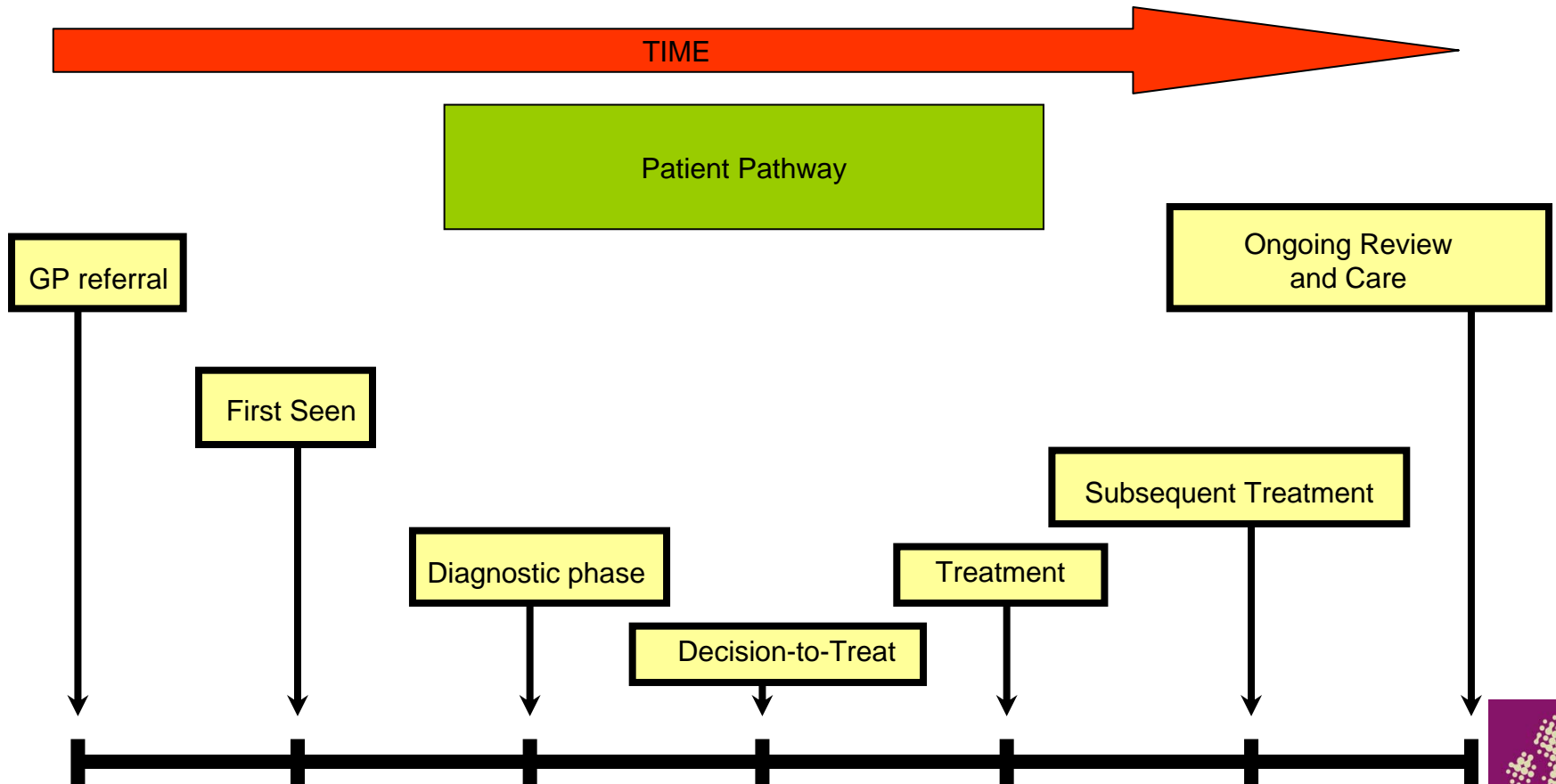
Core Objective #1:

Promoting efficient and effective data collection throughout the cancer journey

Calman-Hine 1995

- ...Framework for creating a network of cancer care in England and Wales...
- ...Development of cancer services should be patient focussed...
- ...Cancer registration and careful monitoring of treatment and outcomes are essential...





Since then.....

- Cancer Plan 2000
- Manual of Cancer Standards
- Peer Review
- MDTs
- National Cancer Dataset
- Cancer Waits
- National Clinical Audit Support Programme
- College datasets e.g. BASO, ACP, BAUS

Emphasis on cancer data

- Multiple datasets
- Multiple data sources
- Multiple data processes
- No strategy
- Parallel universes
- Who wants what and when!

DUPLICATION

Focus on.....

- MDTs
- Patient Management
- Aligning datasets
- Coordinate processes
- Gaps in Knowledge
and data



COLLECT
ONCE

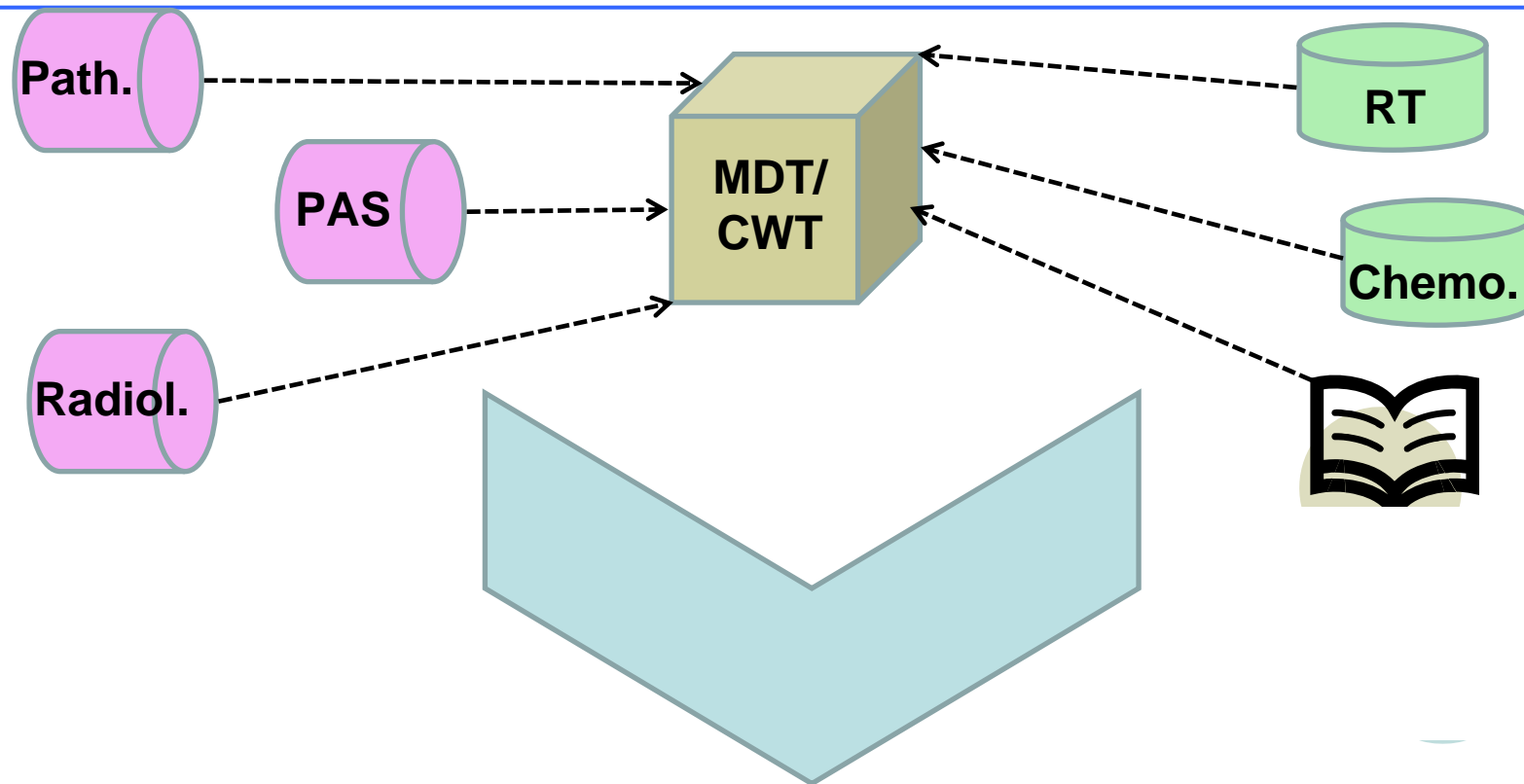
Cancer Reform Strategy

- Mandation of datasets
 - National Contract for Acute Services
 - Commissioning Datasets
 - Cancer Waiting Times
 - Cancer Registration
 - Radiotherapy
 - Chemotherapy

By 2011

- Electronic transfer of Cancer Registration dataset
- Recognise multiple data sources
- Capture 'clinical' data via MDTs
 - Staging
 - Co-morbidity
 - Recurrence, etc

Patient Management



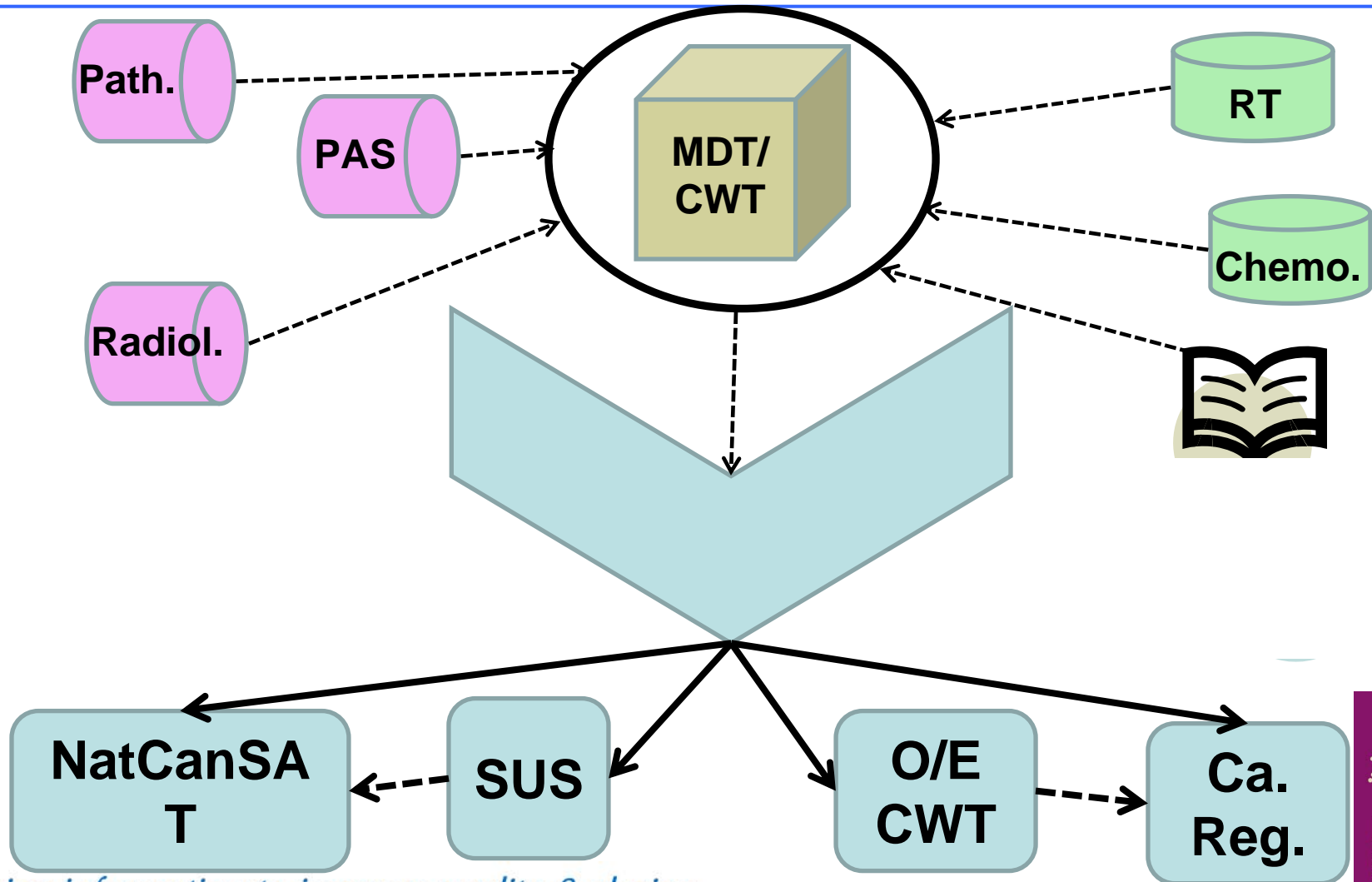
Link Data Sources for Patient Care

Using information to improve quality & choice

Challenges....

- Clinical data from MDTs?
- Transport via standard NHS data flows
 - SUS
 - Open Exeter (Cancer Waits)
 - To Cancer Registries & Nat. Repository
 - To NCASP
- Linking activity and ‘care record’ data
 - OPCDS + radiotherapy
 - CWT + ‘registration’

Data Transfer - 2



Using information to improve quality & choice

The role of NCIN

- Coordinate implementation of National Contract
- Support MDTs to coordinate data capture
- Oversee MDT training programmes
- Facilitate discussions re: data gaps
 - Staging & co-morbidity
- Support submissions to ISB and ROCR
- Work towards harmonisation of processes
- Strive for data quality and timeliness