

Cancer Data from Secondary Care

Cancer Data Sources

- National Cancer Data Repository (Cancer Registration, Hospital Episode Statistics, plus....)
- Cancer Waiting Times
- National Cancer Audits (Lung, Colo-rectal, Head & neck, Upper GI, Prostate)
- Cancer Outcomes & Services Dataset (COSD)
- Radiotherapy Dataset (RTDS)
- Diagnostic Imaging Data Set (DIDS)
- Systemic Anti-Cancer Therapy Dataset (SACT)
- National Cancer Patient Experience Survey

Hospital Episode Statistics

- In-patient HES
 - Surgery
 - In patient episodes, diagnosis and duration (co-morbidities)
 - Route of admission
 - Some endoscopy
 - Limited chemotherapy and radiotherapy
- Out-patient HES
 - No significant access to date
 - Limited diagnostic coding
 - Number, site and speciality of OP attendances

Cancer Data Sources

- National Cancer Data Repository (Cancer Registration, Hospital Episode Statistics, plus....)
- Cancer Waiting Times
- National Cancer Audits (Lung, Colo-rectal, Head & neck, Upper GI, Prostate)
- Cancer Outcomes & Services Dataset (COSD)
- Radiotherapy Dataset (RTDS)
- Diagnostic Imaging Data Set (DIDS)
- Systemic Anti-Cancer Therapy Dataset (SACT)
- National Cancer Patient Experience Survey

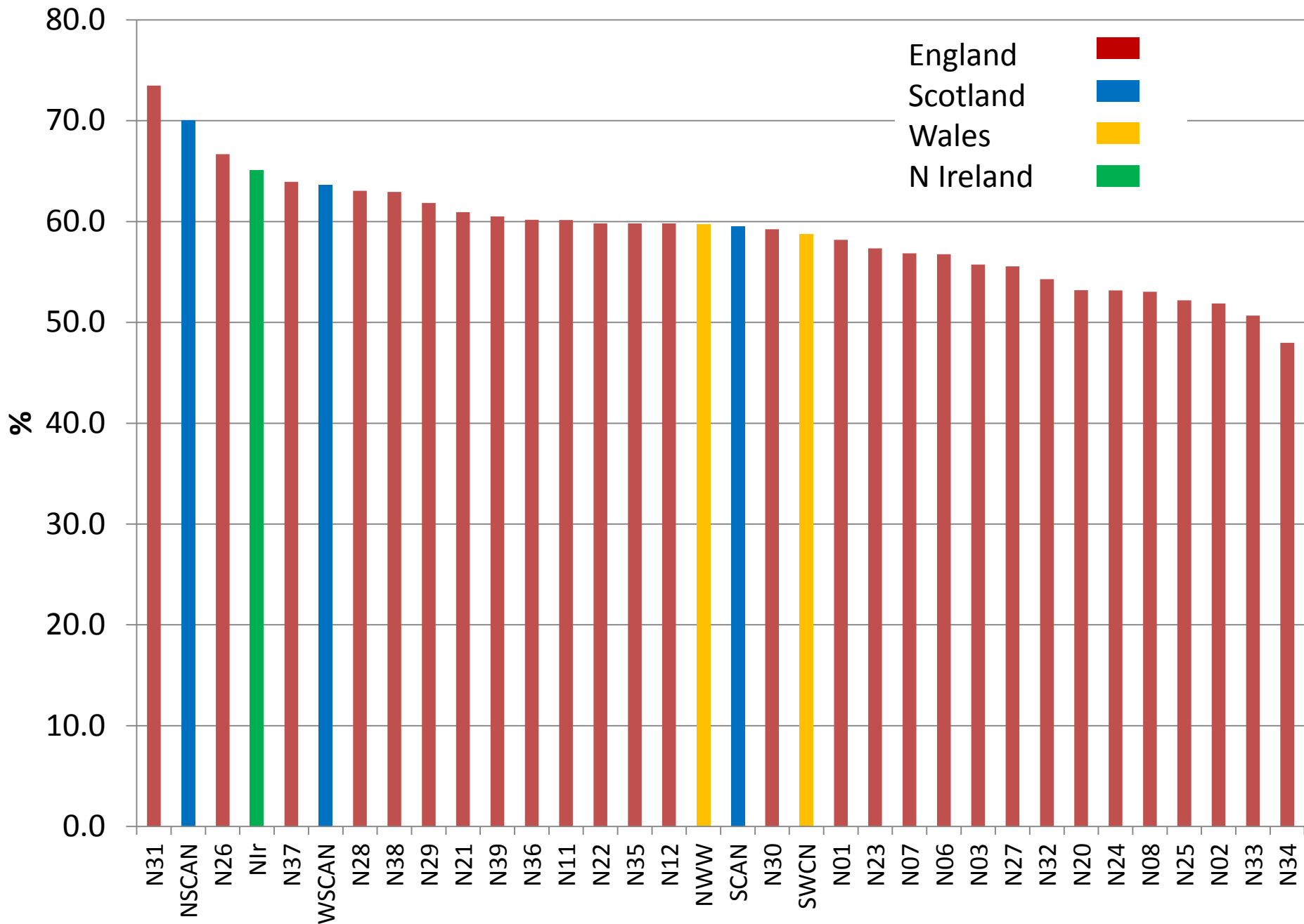
National Lung Cancer Audit (England & Wales)

Case ascertainment and data completeness

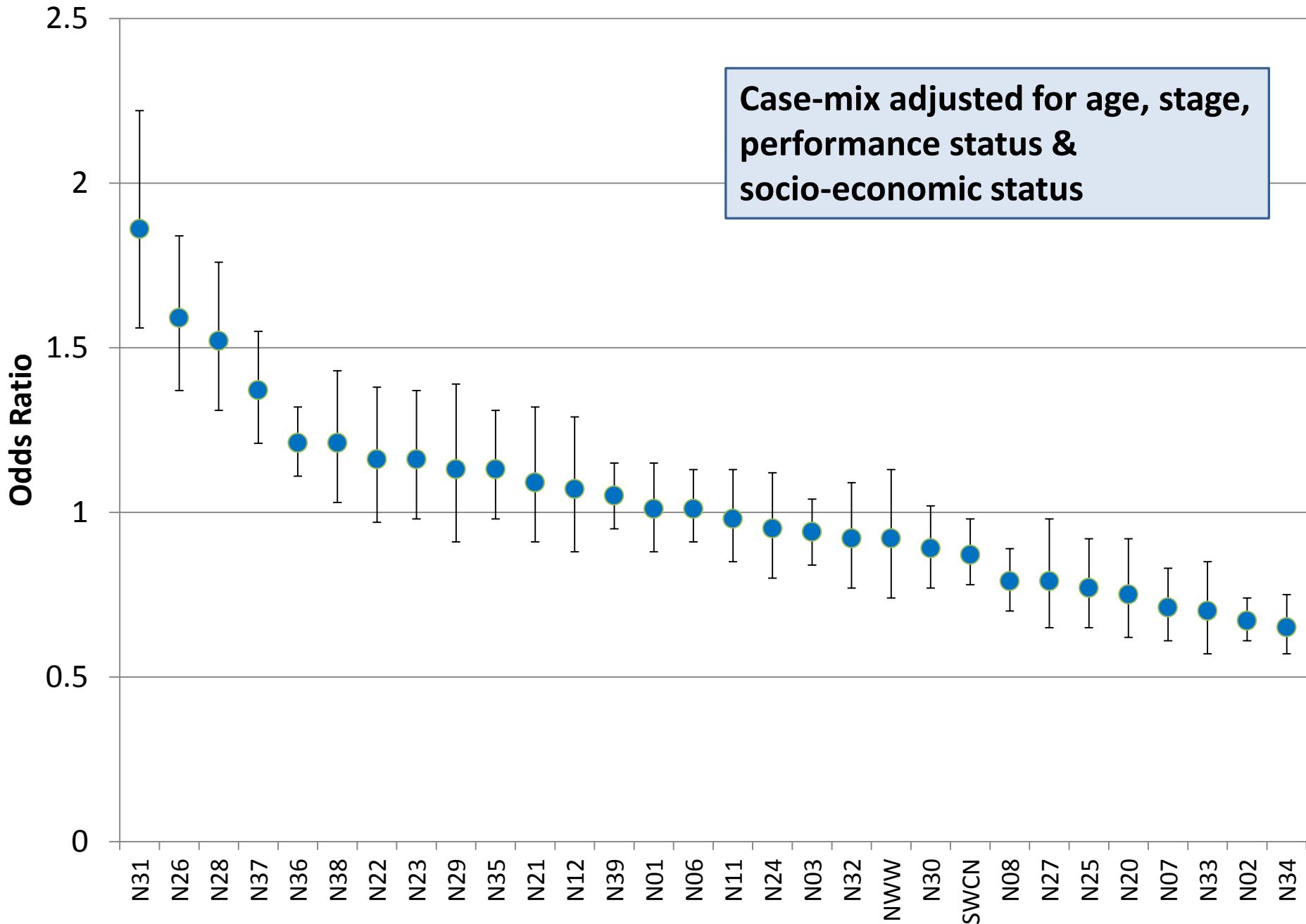
	2005*	2006	2007	2008	2009	2010	2011
% trusts submitting data	77	93	96.5	98.1	100	100	100
Number of cases	10,920	18,859	22,628	27,815	32,068	32,347	33,463
Case ascertainment (%)	40	66	75	92	~100	~100	~100
Data completeness (%)							
Stage	51	55	59	78	81.8	85.6	88.1
Performance status	66	77	63	87	79.4	84.7	88.5
Treatment	66	72	79	82	88.7	88.7	90.4

*England only

Active Treatment Rate (%)



Active Treatment Rate (England & Wales only)



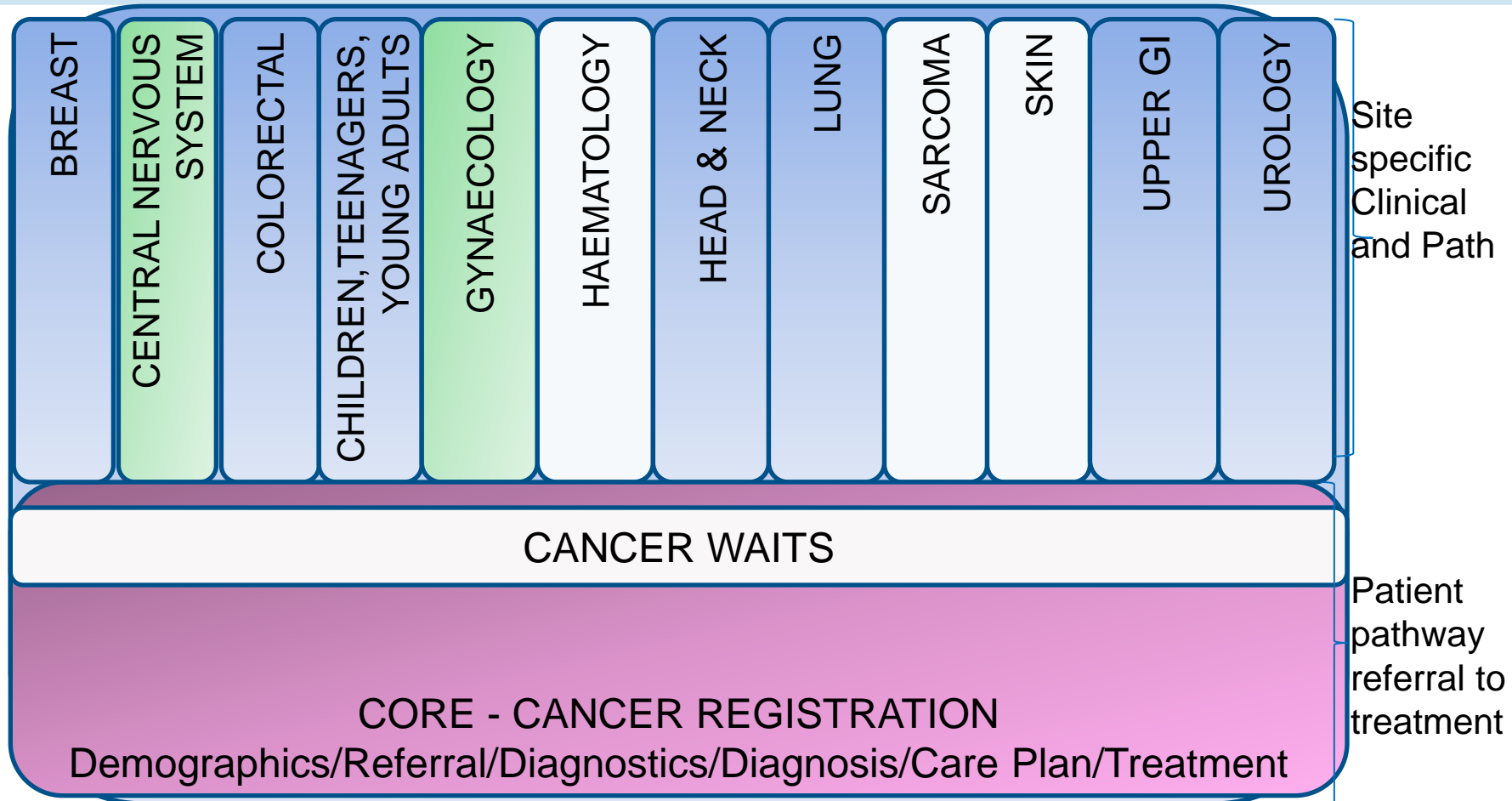
Cancer Data Sources

- National Cancer Data Repository (Cancer Registration, Hospital Episode Statistics, plus....)
- Cancer Waiting Times
- National Cancer Audits (Lung, Colo-rectal, Head & neck, Upper GI, Prostate)
- Cancer Outcomes & Services Dataset (COSD)
- Radiotherapy Dataset (RTDS)
- Diagnostic Imaging Data Set (DIDS)
- Systemic Anti-Cancer Therapy Dataset (SACT)
- National Cancer Patient Experience Survey

Cancer Outcomes & Services Dataset

- **The new national cancer dataset**
- Cancer Outcomes and Services
- Aligned with patient management
- Proposed and supported by clinicians
- Incorporates previous cancer registration dataset
- Updated and aligned with other datasets
- Clarified definitions of data items, codes and values
- Specifies Provider submissions
- Compiled by registries from Providers and other sources

COSD - Structure



Cancer Data Sources

- National Cancer Data Repository (Cancer Registration, Hospital Episode Statistics, plus....)
- Cancer Waiting Times
- National Cancer Audits (Lung, Colo-rectal, Head & neck, Upper GI, Prostate)
- Cancer Outcomes & Services Dataset (COSD)
- Radiotherapy Dataset (RTDS)
- Diagnostic Imaging Data Set (DIDS)
- Systemic Anti-Cancer Therapy Dataset (SACT)
- National Cancer Patient Experience Survey

Cancer Data Sources

- National Cancer Data Repository (Cancer Registration, Hospital Episode Statistics, plus....)
- Cancer Waiting Times
- National Cancer Audits (Lung, Colo-rectal, Head & neck, Upper GI, Prostate)
- Cancer Outcomes & Services Dataset (COSD)
- Radiotherapy Dataset (RTDS)
- Diagnostic Imaging Data Set (DIDS)
- Systemic Anti-Cancer Therapy Dataset (SACT)
- National Cancer Patient Experience Survey

Cancer Data Sources

- National Cancer Data Repository (Cancer Registration, Hospital Episode Statistics, plus....)
- Cancer Waiting Times
- National Cancer Audits (Lung, Colo-rectal, Head & neck, Upper GI, Prostate)
- Cancer Outcomes & Services Dataset (COSD)
- Radiotherapy Dataset (RTDS)
- Diagnostic Imaging Data Set (DIDS)
- Systemic Anti-Cancer Therapy Dataset (SACT)
- National Cancer Patient Experience Survey

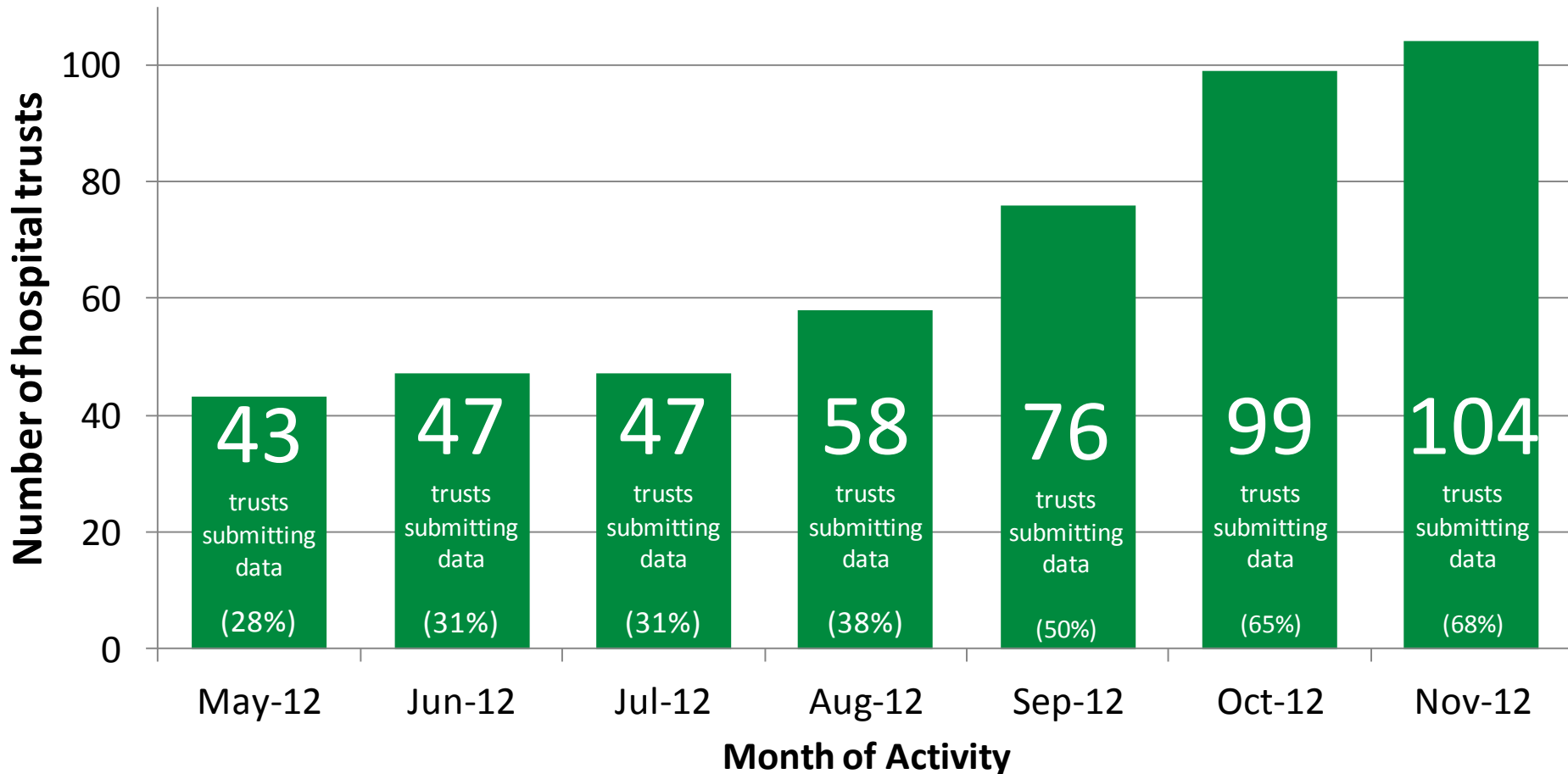
Systemic Anti-Cancer Therapy Dataset (SACT)

- The **Systemic Anti-Cancer Therapy Information Standard** became operational in the NHS for England on 1st April 2012
- There is an implementation period from April 2012- April 2014 by which all trusts should be contributing full data
- This covers all drug treatment for cancer in all settings

Number of hospital trusts submitting chemotherapy data, by month of activity

Note: There are **153** hospital trusts in England known by CIU to be delivering chemotherapy services

Source: SACT dataset, accessed 26th November 2012

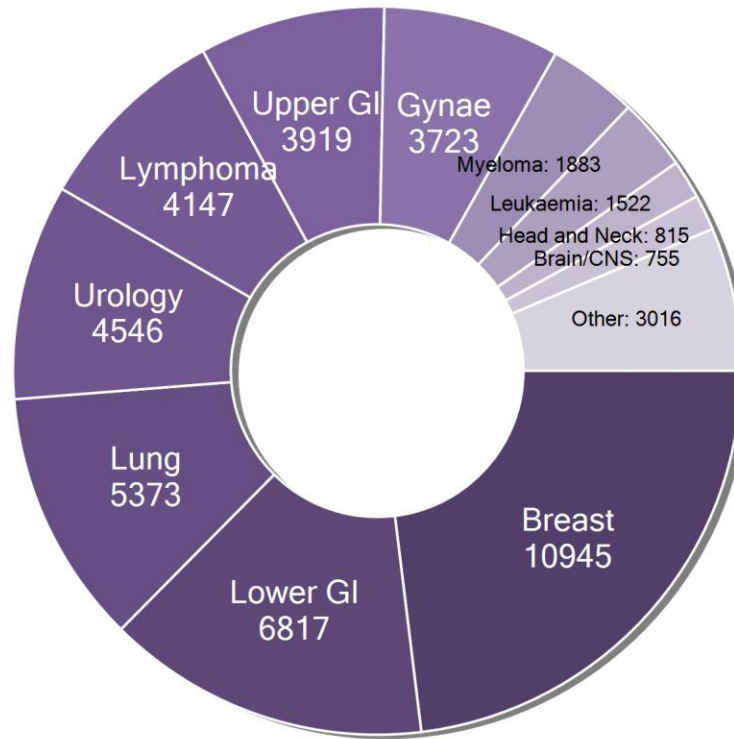


Number of Patients by Diagnostic Group

All submitting trusts aggregated

Data received for April 2012 - September 2012. Patients aged 16 and over

■ Breast: 10945 (23%)	■ Urology: 4546 (10%)	■ Gynae: 3723 (8%)	■ Head and Neck: 815 (2%)
■ Lower GI: 6817 (14%)	■ Lymphoma: 4147 (9%)	■ Myeloma: 1883 (4%)	■ Brain/CNS: 755 (2%)
■ Lung: 5373 (11%)	■ Upper GI: 3919 (8%)	■ Leukaemia: 1522 (3%)	■ Other: 3016 (6%)

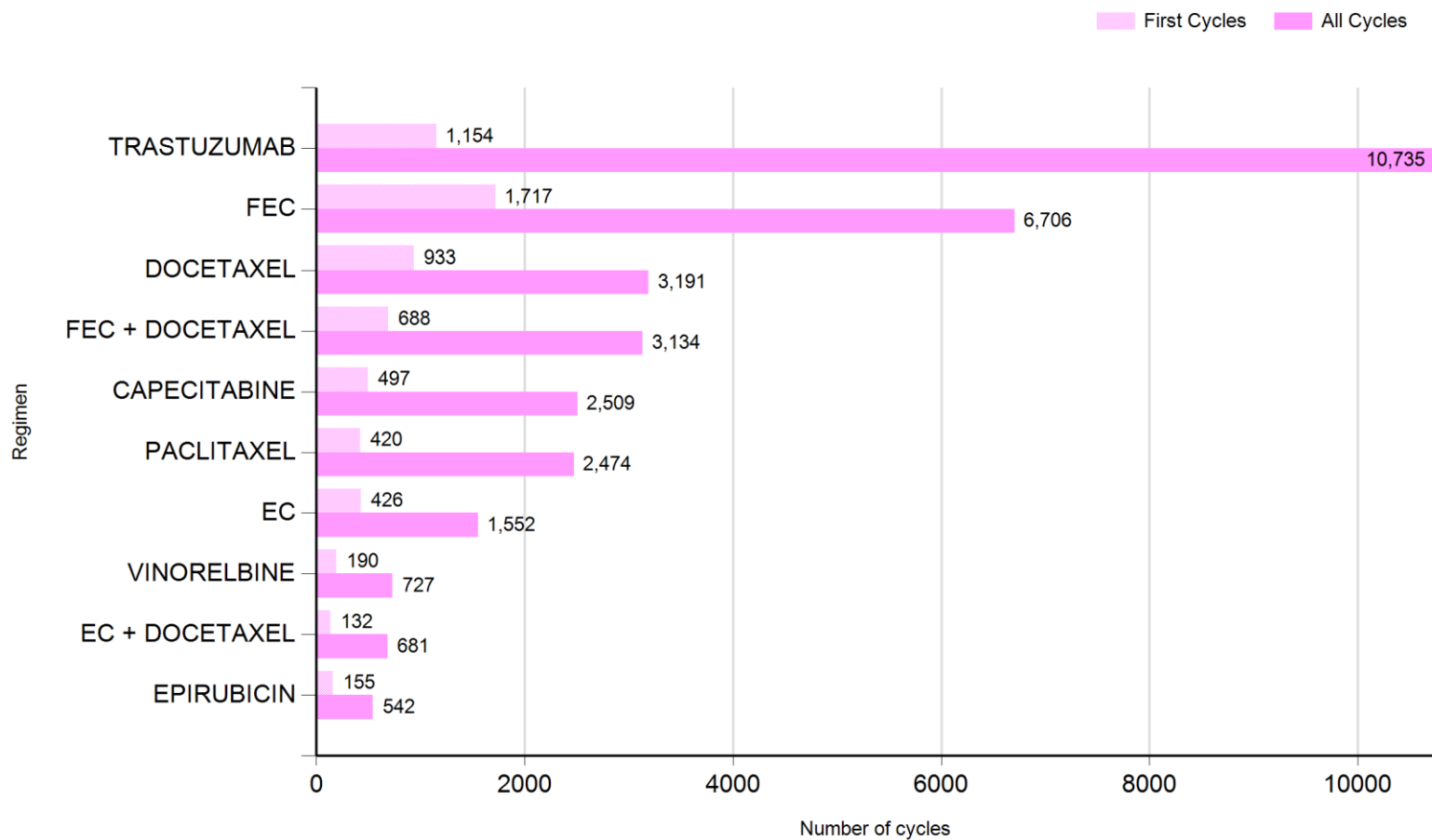


Top Regimens by Diagnostic Group

Breast †

All submitting trusts aggregated

Data received for April 2012 - September 2012. Patients aged 16 and over

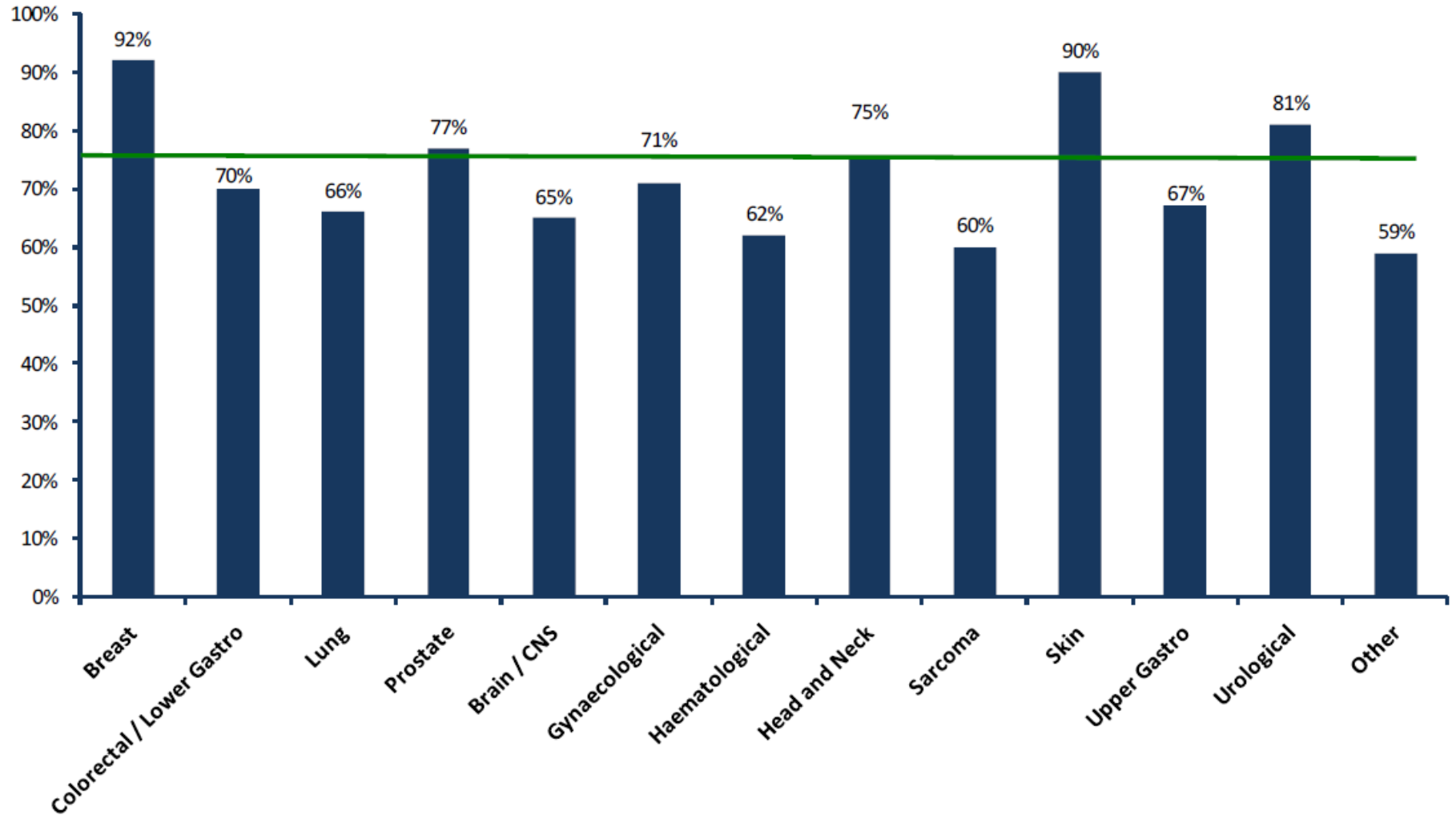


Cancer Data Sources

- National Cancer Data Repository (Cancer Registration, Hospital Episode Statistics, plus....)
- Cancer Waiting Times
- National Cancer Audits (Lung, Colo-rectal, Head & neck, Upper GI, Prostate)
- Cancer Outcomes & Services Dataset (COSD)
- Radiotherapy Dataset (RTDS)
- Diagnostic Imaging Data Set (DIDS)
- Systemic Anti-Cancer Therapy Dataset (SACT)
- National Cancer Patient Experience Survey

Cancer Patient Experience Survey

Saw GP no more than twice before referral to hospital



NCIN



national cancer
intelligence network

Using information to improve quality & choice

www.ncin.org.uk



NCRI
National
Cancer
Research
Institute