

**Alistair Stirling** Spinal Surgeon  
Lead Clinician NICE MSCC guideline

**Anita Killingworth** Macmillan Spinal  
Oncology ANP and MSCC Co-ordinator

**Eddy Butler**  
Software Engineer and IT Consultant

What is this?

A comprehensive information database and treatment guide for this numerically rapidly increasing group of patients.

Why use it ?

- Integral to patient pathway with comprehensive electronic patient record
- If common national standard adopted potential facilitation of comparison and optimisation of treatment modalities .
- Build on progress to date and avoid unnecessary duplication

How to get the most from this poster

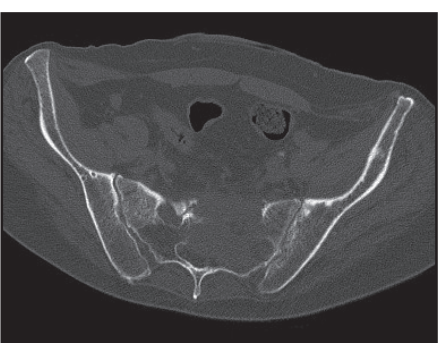
Steps

1. Please read the background for general information
2. Identify which group you fall into.  
Read the relevant section about the advantages to you from using the database

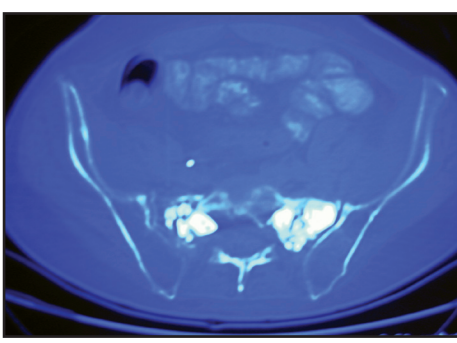
Background

Spinal metastatic disease

- Often avoidable pain, paralysis and incontinence.
- Improved oncological control – many are now living with their disease for several if not more years.



Cement Sacroplasty for renal metastases

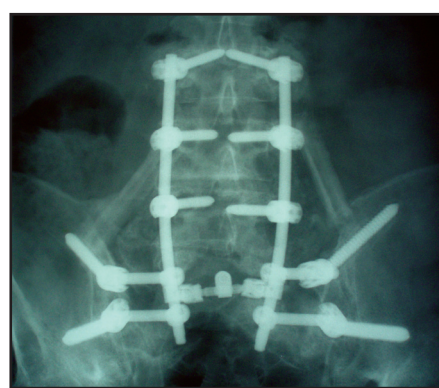


ROH Spinal Metastatic disease

- Long history of surgical management (first published series 1977–1991).
- Contributions to BASO guidelines Metastatic Breast Carcinoma 1995.
- BOA Guidelines 2002 (BOA website).
- Local working group 2002 evolving to formal NSSG 2006.
- Spinal Oncology ANP > MSCC coordinator (palliative care funding 2005, Macmillan three-year funding 2006).
- BAUS guidelines
- NICE guideline 2008.

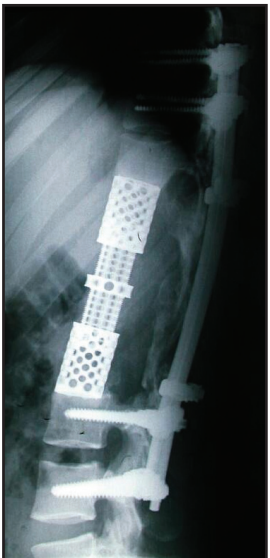
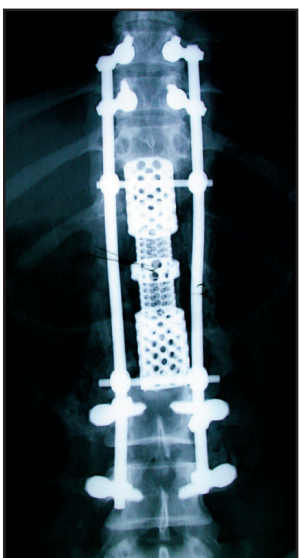


Posterior Lumbo Pelvic Stabilisation and fusion for myeloma



Treatment – various solutions proportionate to the prognosis

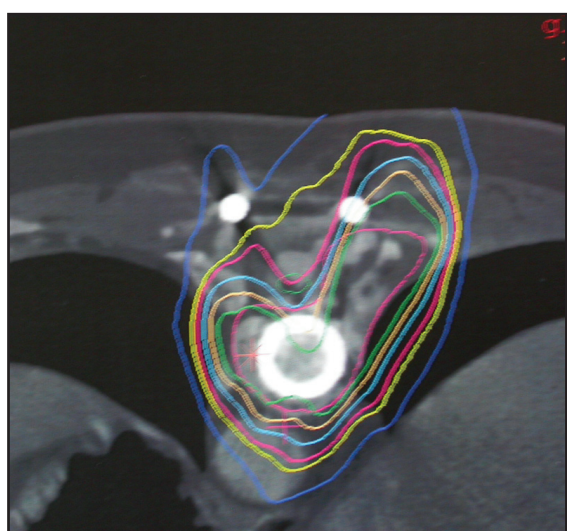
- Palliation.
- Radiotherapy.
- Vertebroplasty/Kyphoplasty.
- Simple posterior decompression and stabilisation.
- Enbloc extralesional excision and reconstruction for seemingly isolated disease.



3 Level Corpectomy and anterior posterior reconstruction for primary bone tumour.

ROH Bone Oncology Database 1988

- 21 year experience.
- New platform 2003.
- Integral to patient process.
- Proven functionality.
- Proven clinical audit tool.



Future Non Surgical Options intensity modulated radiotherapy

Select your role in the patient pathway



Techy bits

Clinical/Cancer utility

- NHS Number compatibility.
- Open Exeter compliance/cancer tracking.
- 18 week tracker compatibility.
- Compliant with Cancer Peer Review Strategy.
- Compliant with MDT standards.
- Dropdown Menus for diagnosis (ICD10) and procedures (OPCS – in development).
- **System interaction.**
- Links to IPM PAS.
- Links to Ormis.

Platform and architecture

- Apple/PC compatibility.
- Open Architecture.
- Industry standard Database – SQL Server/Oracle.
- Based on application framework.

Information and reporting

- Exporting, importing and reporting.
- Platform for a data warehouse.

Security and system administration

- Control user access.
- Complete data auditing.
- User configurable dropdowns.

Conclusion

Why re-invent?