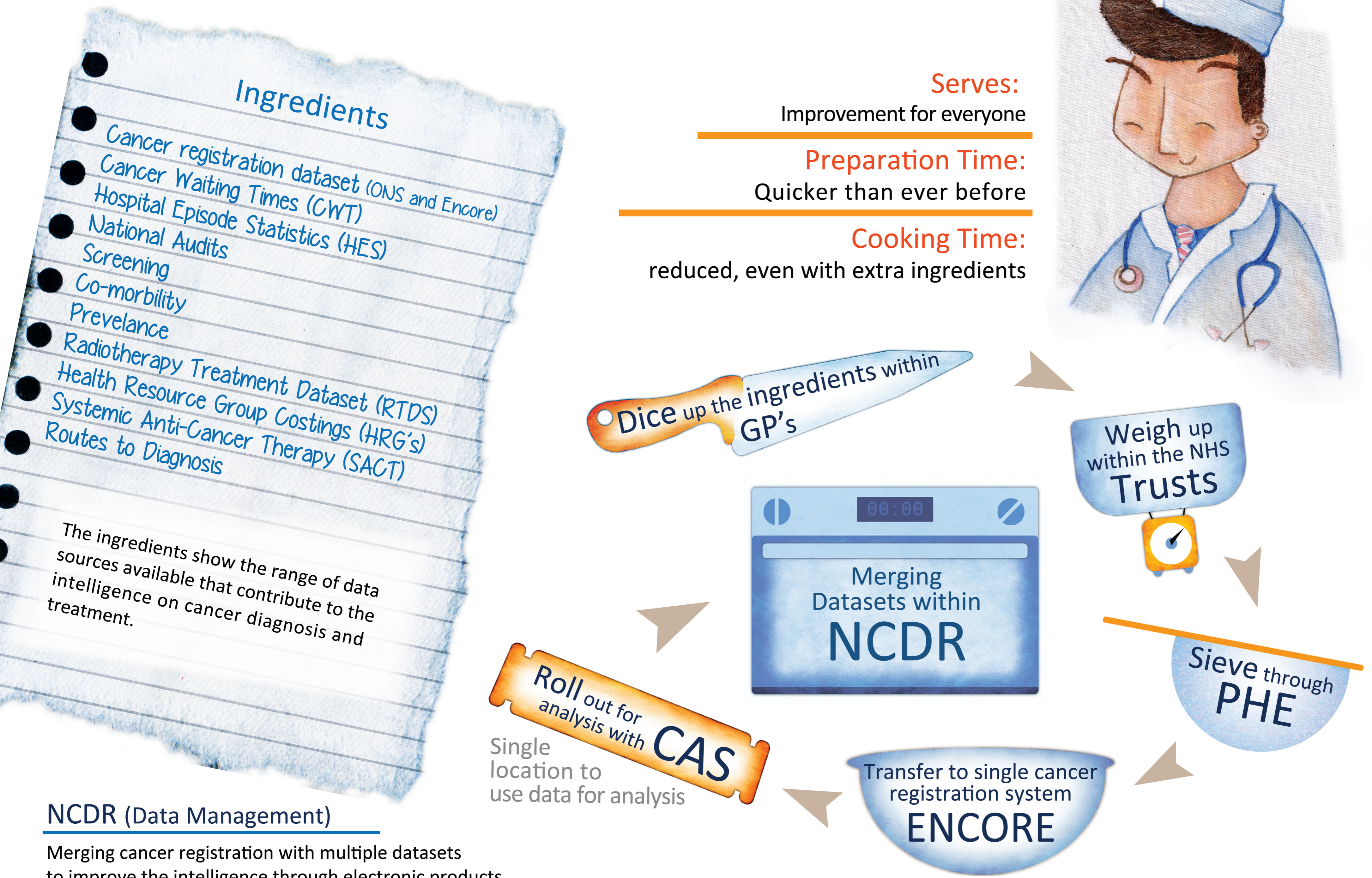


Improving Data Flows for Better Cancer Intelligence



A recipe for bringing various Cancer Data sources together within the Cancer Analysis System (CAS) to produce a clearer picture of the burden of cancer.

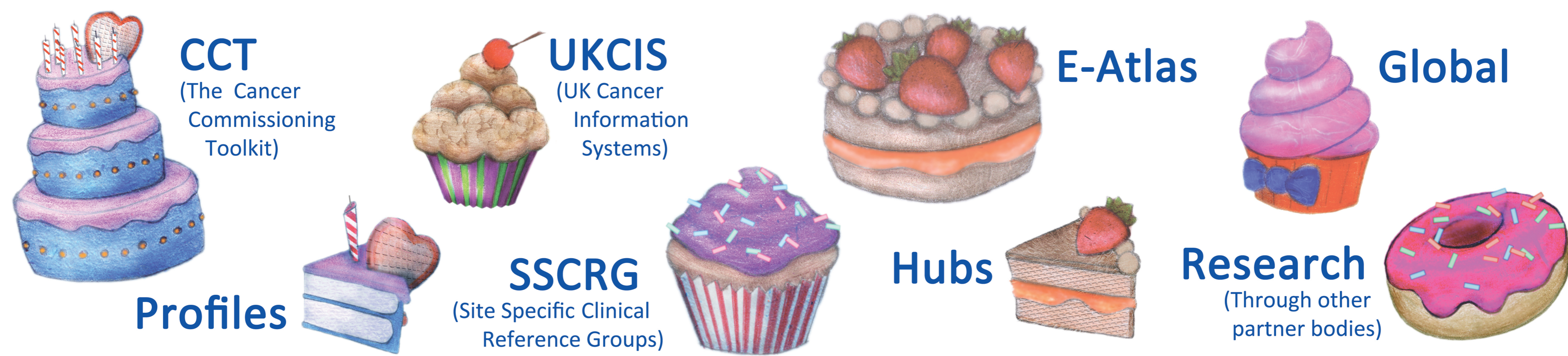
A range of information products and tools now make data about cancer diagnoses and treatment available to different users at varying levels of detail. Although valued by their users, updating these different products has been a labour intensive process, meaning that they have frequently lagged behind the latest data. The move to the Public Health England (PHE) Knowledge and Intelligence Teams (KIT) and Cancer Registration to ENCORE and the availability of a centralised Cancer Analysis System (CAS) presents an opportunity to improve these and automate data flows, reducing the resource requirements for maintaining these tools and ensuring that they provide users with information to produce a clearer picture of the burden of cancer.



- Identify additional data items to add to datasets for improved information and analysis.
- Ensure consistency by clarifying data field descriptions.
- Co-ordinate around national guidance on dataset issues.
- Calculate data flows through consistent methodologies.
- Deliver standard procedures to identify and handle conflicting patient data and duplications.
- Improve quality of published data.
- Provide clear governance around the use of the data.

Serve

These products allow commissioners, health service managers, clinicians and other providers to make better use of information intelligence to improve quality of care, provide a vast picture of cancer data and ultimately improve patient outcomes.



CCT/UKCIS - Tools updated for NHS/PHE users.
Profiles - Data used to provide a snapshot of services.
E-Atlas/CCT - Tools updates for Public users.
SSCRG/Hubs/Global/NCRI/NCIN - Aggregated data used for further analysis.

Neil Harvey-Hughes
Illustration