

Cancer Outcomes and Services Dataset

An update

Lung workshop
September 2013
Trish Stokes

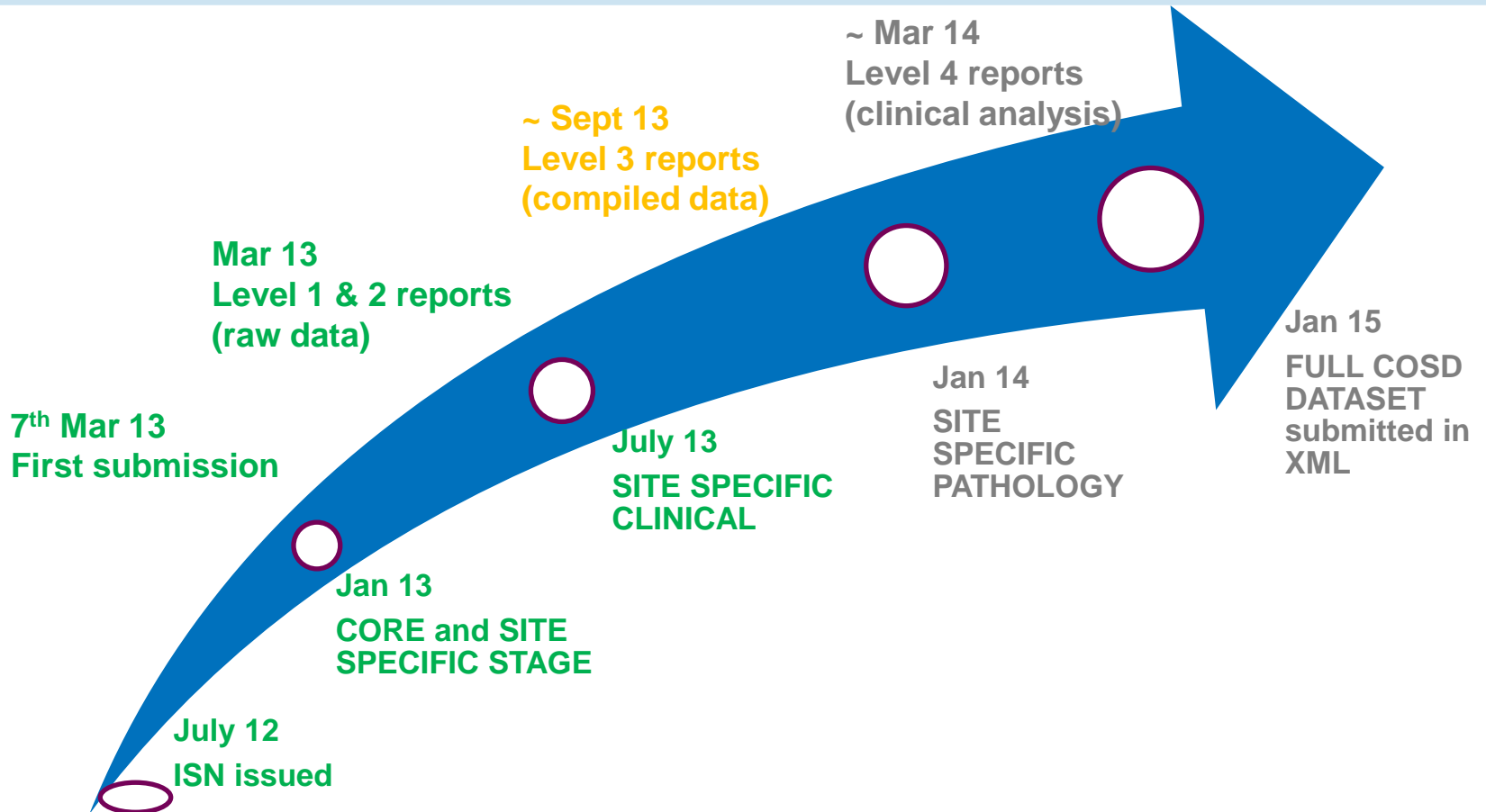
A recap - COSD

- New national cancer dataset
- Includes generic and site specific data
- Replaces submission to cancer registries
- Trigger is new diagnosis/updates
- Can be submitted from different sources
- Submitted monthly
- RCPATH extracted from reports
- Aligned with national audits
- Monthly feedback

A recap – Cancer registration

- Separation of registration and analysis within PHE
- National Cancer Registration Service
- Single system (ENCORE) and processes
- Collate data from different sources
- Regular feedback

Timetable



Core data – from Jan 2013

- Updated generic dataset for whole patient pathway
- Cancer Waits items apply to all cases
 - Referral section
 - METASTATIC SITE (at diagnosis)
- New CORE data items
 - DATE OF DIAGNOSIS (CLINICALLY AGREED)
 - CANCER SYMPTOMS FIRST NOTED DATE (CTYA only)
 - MORPHOLOGY (ICDO3) – Haem only
 - ACE 27 SCORE (Optional)
 - CLINICAL NURSE SPECIALIST
 - TNM EDITION NUMBER
 - MONITORING INTENT (Urology and Lung)

Key Lung data

– from July 2013

- Based on National Lung Cancer Audit
 - CT Scan
 - PET Scan
 - Bronchoscopy
 - FEV 1
 - Smoking status
 - Mediastinal sampling
 - EGFR

Key Lung data

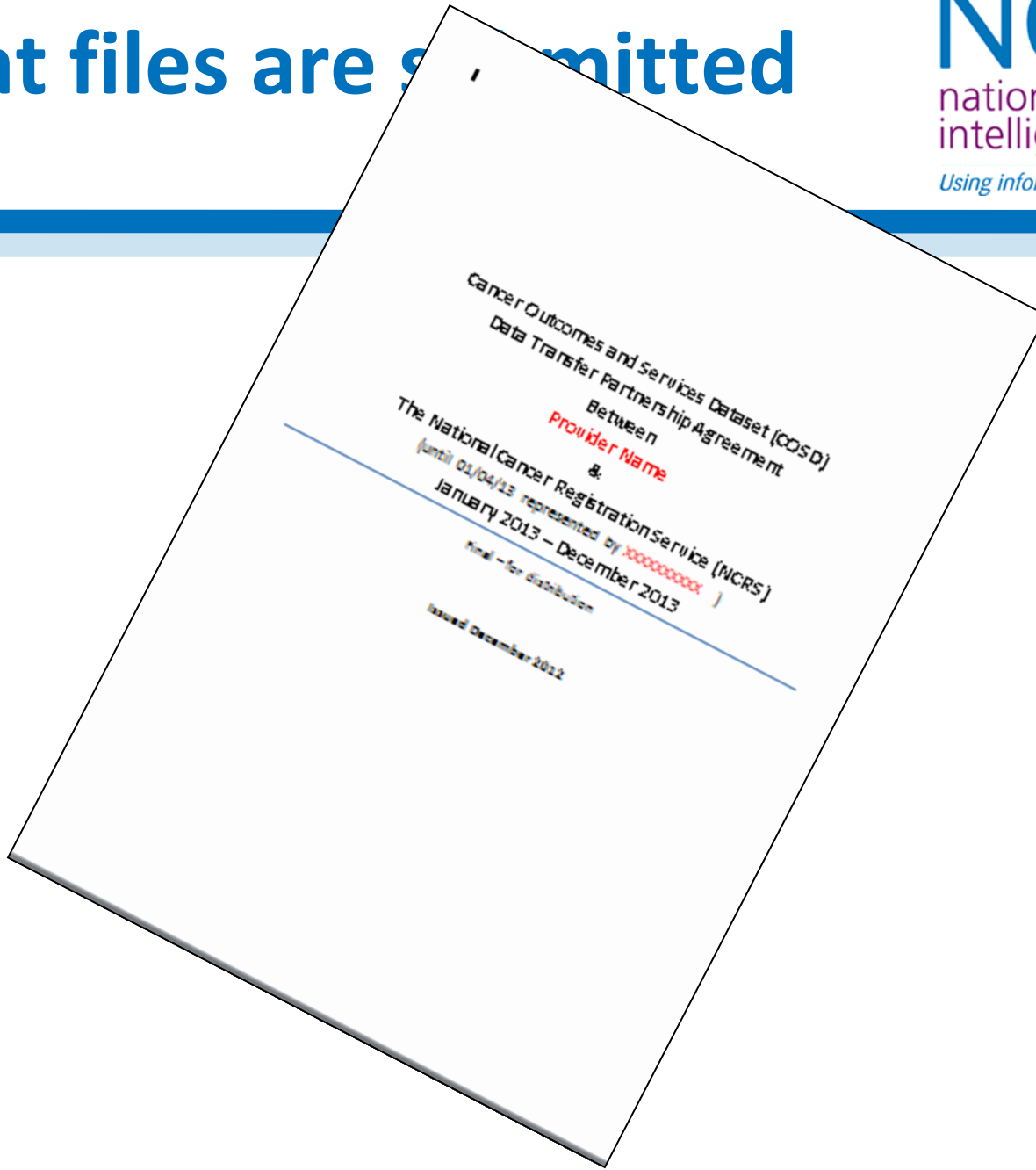
– from Jan 2014

- Pathology Stage components
 - PROXIMITY TO CARINA
 - EXTENT OF ATELECTASIS
 - EXTENT OF PLEURAL INVASION
 - PERICARDIAL INVASION
 - DIAPHRAGM INVASION
 - INVASION INTO GREAT VESSEL
 - INVASION INTO HEART
 - MALIGNANT PLEURAL EFFUSION
 - SATELLITE TUMOUR NODULES LOCATION

Reporting feedback

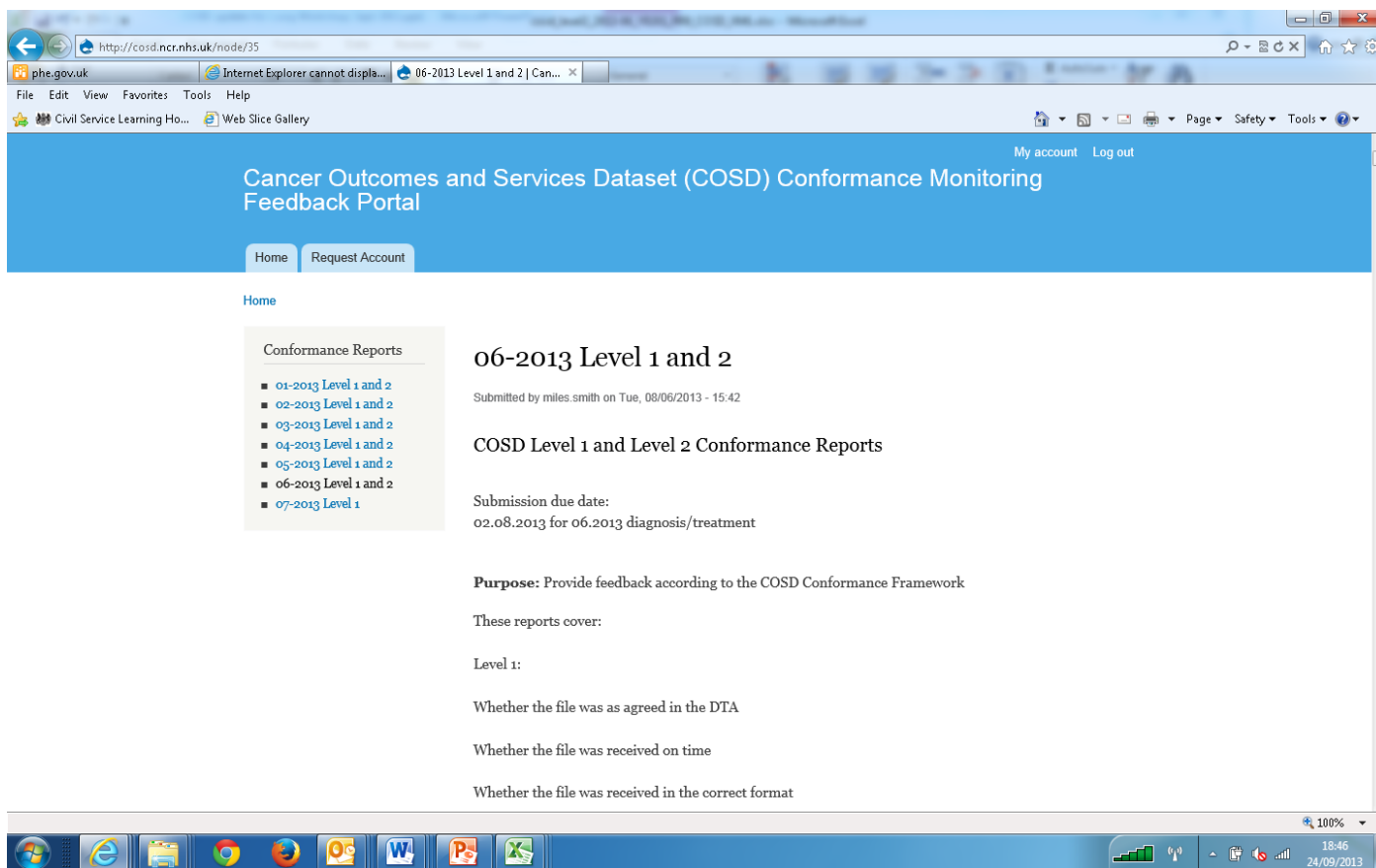
- Four levels:
 1. Fact of submission (files)
 2. Data Quality (raw data)
 3. Quality assurance (processed data)
 4. Clinical analysis (processed/summarised data)

What files are submitted



Reporting portal

<http://cosd.ncr.nhs.uk/>



http://cosd.ncr.nhs.uk/node/35

06-2013 Level 1 and 2 | Can...

My account Log out

Cancer Outcomes and Services Dataset (COSD) Conformance Monitoring Feedback Portal

Home Request Account

Home

Conformance Reports

- 01-2013 Level 1 and 2
- 02-2013 Level 1 and 2
- 03-2013 Level 1 and 2
- 04-2013 Level 1 and 2
- 05-2013 Level 1 and 2
- 06-2013 Level 1 and 2
- 07-2013 Level 1

06-2013 Level 1 and 2

Submitted by miles.smith on Tue, 08/06/2013 - 15:42

COSD Level 1 and Level 2 Conformance Reports

Submission due date:
02.08.2013 for 06.2013 diagnosis/treatment

Purpose: Provide feedback according to the COSD Conformance Framework

These reports cover:

Level 1:

- Whether the file was as agreed in the DTA
- Whether the file was received on time
- Whether the file was received in the correct format

100%

18:46
24/09/2013

Level 1 – Submission

Level 1 reporting deadline for this data: close of play on 06.08.2013

Level 2 reporting deadline for this data: close of play on 30.08.2013

Report generated: 30.08.2013 16:54

Registry / Provider	Source type	L1.1 conformance <i>Agreed files received?</i>	L1.2 conformance <i>Plans for exceptional circumstances?</i>	L1.3 conformance <i>File received by due date?</i>	L1.4 conformance <i>File in COSD compliant format?</i>	Level 2 reports
NCRS NORTHERN AND YORKSHIRE BRANCH (Y0201)						
AIREDALE NHS FOUNDATION TRUST (RCF)	MDT (COSD XML/compliant)	Yes	Yes	Yes	Yes	Level 2
	PATHOLOGY			Yes	N/A	[2]
BRADFORD TEACHING HOSPITALS NHS FOUNDATION TRUST (RAE)	MDT (COSD XML/compliant)	Yes	Yes	Yes	Yes	Level 2
	PATHOLOGY			Yes	N/A	[2]
CALDERDALE AND HUDDERSFIELD NHS FOUNDATION TRUST (RWY)	MDT (COSD XML/compliant)	Yes	Yes	Yes	Yes	Level 2
	PATHOLOGY			Yes	N/A	[2]
CITY HOSPITALS	MDT (COSD XML/compliant)			Yes	Yes	Level 2

Level 2

– Data quality – raw data

- By MDT/Tumour group and Provider for month of diagnosis (invasive and non invasive)
- Available within **one month** of submission
- Breakdown by:
 - Number of new diagnoses
 - Number of patients treated
 - Basis of diagnosis
 - Stage
 - Performance status completed

Number diagnosed and treated

L2.3a / L2.3b / L2.3c	Number by tumour group during reporting month		
	Diagnosed L2.3a	Treated L2.3b	Other L2.3c
Brain/Central Nervous System (invasive)	19	7	81
Breast (invasive)	84	94	509
Colorectal (invasive)	75	36	373
Gynaecological (invasive)	62	45	214
Haematological (invasive)	58	0	323
Head and Neck (invasive)	29	10	139
Lung (invasive)	108	18	558
Sarcoma (invasive)	13	2	42
Skin (invasive)	92	103	782
Upper Gastrointestinal (invasive)	76	28	387
Urological (invasive)	147	60	803
Other (invasive)	31	14	141

Stage

L2.3d	Breakdown of stage by tumour group and percentage with completed stage grouping						
	Diagnosed	% Staged	Stage 1	Stage 2	Stage 3	Stage 4	Other Stage
Brain/Central Nervous System (invasive)	19	0%	0	0	0	0	0
Breast (invasive)	84	26%	0	0	0	0	22
Colorectal (invasive)	75	41%	0	0	0	0	31
Gynaecological (invasive)	62	79%	32	5	5	7	0
Haematological (invasive)	58	12%	1	2	2	2	0
Head and Neck (invasive)	29	62%	2	0	0	0	16
Lung (invasive)	108	81%	0	0	0	0	88
Sarcoma (invasive)	15	8%	0	0	0	0	1
Skin (invasive)	92	36%	5	2	1	0	25
Upper Gastrointestinal (invasive)	76	34%	0	1	1	0	24
Urological (invasive)	147	17%	7	1	0	0	17
Other (invasive)	31	55%	0	0	2	2	13

Performance Status

L2.3e	Percentage with Performance Status field populated
Number diagnosed (from L2.3a)	910
Number with Performance Status	0
% with Performance Status	0%

Basis of diagnosis

L2.3f	Breakdown of basis of diagnosis by tumour group						
	Clinical Diagnosis	Clinical Invest.	Specific Tumour Marker	Cytology	Histology (Metastasis)	Histology (Primary)	Unknown
Brain/Central Nervous System (invasive)	0	7	0	0	0	12	0
Breast (invasive)	1	0	0	0	0	83	0
Colorectal (invasive)	1	4	0	0	3	61	6
Gynaecological (invasive)	0	6	0	1	1	53	1
Haematological (invasive)	0	8	1	0	0	35	14
Head and Neck (invasive)	1	1	0	1	0	22	4
Lung (invasive)	0	33	0	16	3	52	4
Sarcoma (invasive)	0	1	0	0	1	2	9
Skin (invasive)	2	0	0	0	0	81	9
Upper Gastrointestinal (invasive)	0	21	0	5	3	46	1
Urological (invasive)	2	17	2	0	0	126	0
Other (invasive)	0	1	0	2	2	26	0

Level 3 - Compiled monthly summary reports

- By MDT/Tumour group and Provider for month of diagnosis (invasive and non invasive)
- Available within **six months** of submission
- Breakdown by:
 - Diagnosis
 - **Treatment type**
 - Basis of diagnosis
 - Stage
 - **Performance Status**
 - **Completion of pathology data**
 - **???other relevant site specific feedback**

Level 4 - Clinical reports

- Development begins this year
- Consultation with clinical teams
 - SSCRGs
 - Network site specific groups
- Need to align with
 - Service profiles
 - Peer review clinical lines of enquiry
 - National and professional body audits

Moving forward

- Keeping dataset up to date
 - Annual revision
- Communications with Clinical teams
 - Distributing reports
 - Developing reports
 - SCNs?
 - Cancer network leads?
 - MDT leads?

Thank you

Queries to: cosd@ncin.org.uk