

# Six months of COSD – first impressions

Upper GI workshop

October 2013

Trish Stokes

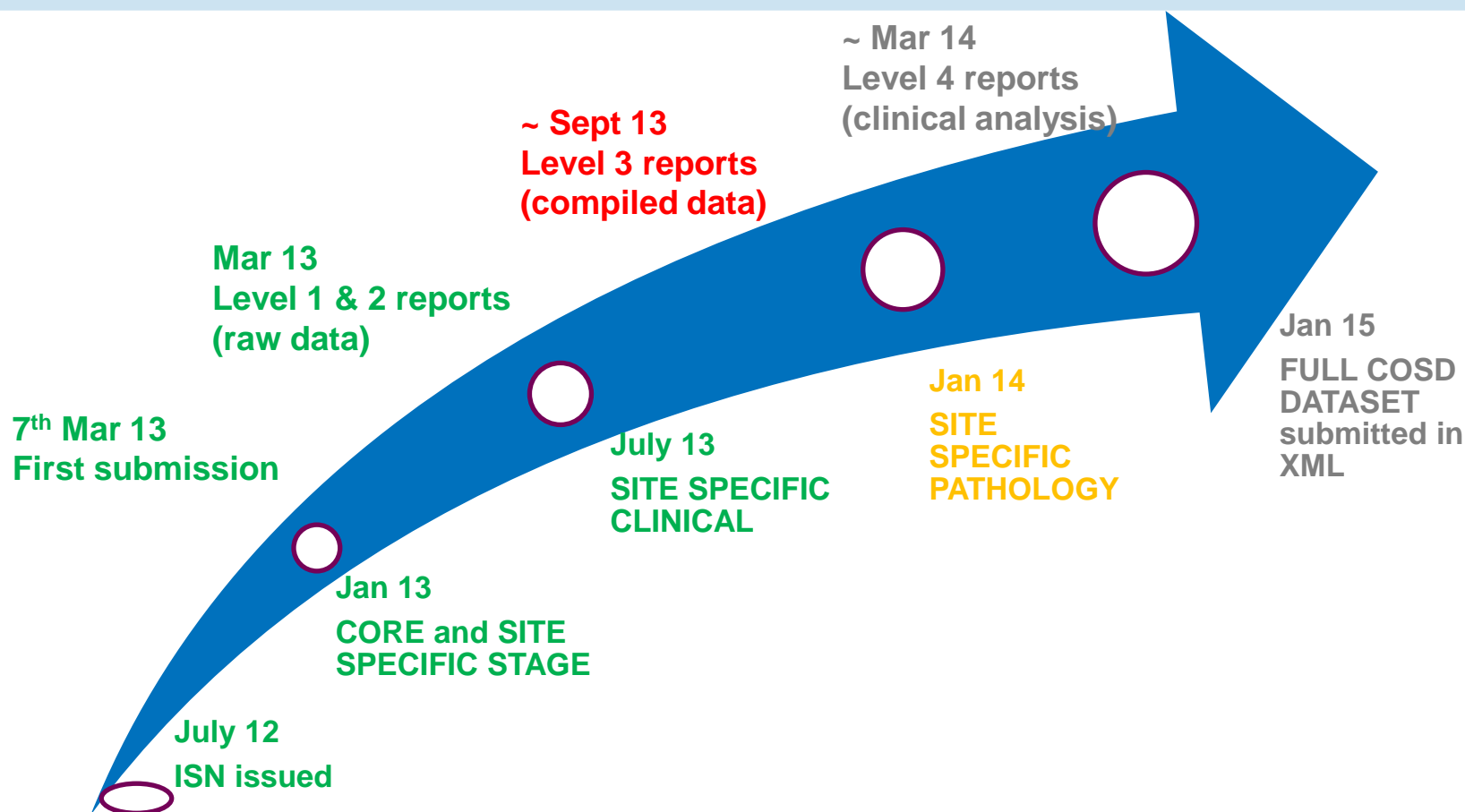
# A recap - COSD

- New national cancer dataset
- Includes generic and site specific data
- Replaces submission to cancer registries
- Trigger is new diagnosis/updates
- Can be submitted from different sources
- Submitted monthly
- RCPATH extracted from reports
- Aligned with national audits
- Monthly feedback

# A recap – Cancer registration

- Separation of registration and analysis within PHE
- National Cancer Registration Service
- Single system (ENCORE) and processes
- Collate data from different sources
- Regular feedback

# Timetable



# Core data – from Jan 2013

- Updated generic dataset for whole patient pathway
- Cancer Waits items apply to all cases
  - Referral section
  - METASTATIC SITE (at diagnosis)
- New CORE data items
  - DATE OF DIAGNOSIS (CLINICALLY AGREED)
  - CANCER SYMPTOMS FIRST NOTED DATE (CTYA only)
  - MORPHOLOGY (ICDO3) – Haem only
  - ACE 27 SCORE (Optional)
  - CLINICAL NURSE SPECIALIST
  - TNM EDITION NUMBER
  - MONITORING INTENT (Urology and Lung)

# Site specific Upper GI data (1)

- from July 2013
- Aligned with National OG Audit
  - Care Plan
    - BMI
    - Number of liver mets (preoperative imaging)
  - Non surgical procedures
    - Type of procedure
    - Who performed by
    - Stent
    - Complications

# Site specific Upper GI data (2)

- Surgical
  - ASA Score
  - Staging laparoscopy
  - Access type
  - Type of palliation
  - Liver transplant
  - Complications
- SNOMED CT PILOT

# Site specific Upper GI data (3)

- Liver Mets/Liver HCC
  - Ablative therapy
  - TACE



# Site specific pathology

- from Jan 2014
- TNM 7 Stage
- Pathology Stage components
  - Number of colorectal mets
  - Proximal/distal margin involved
  - Circumferential margin involved
- Endocrine tumours
  - ENETS TNM

# What files are submitted

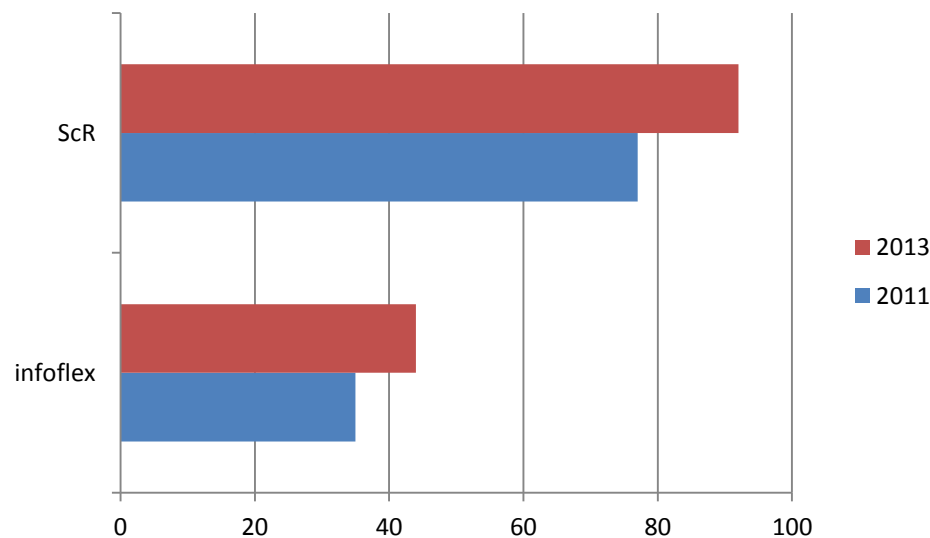
Cancer Outcomes and Services Dataset (COSD)  
Data Transfer Partnership Agreement  
Between  
**Provider Name**  
&  
The National Cancer Registration Service (NCRS)  
(until 01/04/13 represented by xxxxxxxxxxxx )  
January 2013 – December 2013  
*Final – for distribution*  
*Issued December 2012*

- Data Transfer Partnership Agreement

- Two outstanding

# MDT systems in place

- Increase in use of major systems



- Standard template for trusts with no system

# Reporting feedback

- Reporting portal
- Four levels:
  1. Fact of submission (files)
  2. Data Quality (raw data)
  3. Quality assurance (processed data)
  4. Clinical analysis (processed/summarised data)

# Reporting portal

## <http://cosd.ncr.nhs.uk/>

The screenshot shows the 'Cancer Outcomes and Services Dataset (COSD) Conformance Monitoring Feedback Portal' in an Internet Explorer browser window. The address bar shows the URL <http://cosd.ncr.nhs.uk/node/35>. The page has a blue header with the title and navigation links 'Home' and 'Request Account'. A sidebar on the left lists 'Conformance Reports' for various dates from 01-2013 to 07-2013. The main content area is titled '06-2013 Level 1 and 2' and includes submission details, a purpose statement, and a list of items covered by the reports.

Internet Explorer cannot display this page  
06-2013 Level 1 and 2 | Can...

File Edit View Favorites Tools Help  
Civil Service Learning Ho... Web Slice Gallery

My account Log out

### Cancer Outcomes and Services Dataset (COSD) Conformance Monitoring Feedback Portal

Home Request Account

Home

#### Conformance Reports

- 01-2013 Level 1 and 2
- 02-2013 Level 1 and 2
- 03-2013 Level 1 and 2
- 04-2013 Level 1 and 2
- 05-2013 Level 1 and 2
- 06-2013 Level 1 and 2
- 07-2013 Level 1

## 06-2013 Level 1 and 2

Submitted by miles.smith on Tue, 08/06/2013 - 15:42

### COSD Level 1 and Level 2 Conformance Reports

Submission due date:  
02.08.2013 for 06.2013 diagnosis/treatment

**Purpose:** Provide feedback according to the COSD Conformance Framework

These reports cover:

Level 1:

- Whether the file was as agreed in the DTA
- Whether the file was received on time
- Whether the file was received in the correct format

100% 18:46 24/09/2013

# Level 1 – Submission

Level 1 reporting deadline for this data: close of play on 06.08.2013

Level 2 reporting deadline for this data: close of play on 30.08.2013

Report generated: 30.08.2013 16:54

All except one  
trust submitted  
data in  
September

Registry / Provider	Source type	L1.1 conformance Agreed files received?	L1.2 conformance Plans for exceptional circumstances?	L1.3 conformance File received by due date?	L1.4 conformance File in COSF compliant format?	Level 2 reports
NCRS NORTHERN AND YORKSHIRE BRANCH (Y0201)						
AIREDALE NHS FOUNDATION TRUST (RCF)	MDT (COSD XML/compliant)	Yes	Yes	Yes	Yes	Level 2
	PATHOLOGY			Yes	N/A	[2]
BRADFORD TEACHING HOSPITALS NHS FOUNDATION TRUST (RAE)	MDT (COSD XML/compliant)	Yes	Yes	Yes	Yes	Level 2
	PATHOLOGY			Yes	N/A	[2]
CALDERDALE AND HUDDERSFIELD NHS FOUNDATION TRUST (RWY)	MDT (COSD XML/compliant)	Yes	Yes	Yes	Yes	Level 2
	PATHOLOGY			Yes	N/A	[2]
CITY HOSPITALS	MDT (COSD XML/compliant)	Yes	Yes	Yes	Yes	Level 2

# Level 2

## – Data quality – raw data

- By MDT/Tumour group and Provider for month of diagnosis (invasive and non invasive)
- Available within **one month** of submission
- Breakdown by:
  - Number of new diagnoses
  - Number of patients treated
  - Basis of diagnosis
  - Stage
  - Performance status completed

# Number diagnosed and treated

L2.3a / L2.3b / L2.3c	Number by tumour group during reporting month		
	Diagnosed L2.3a	Treated L2.3b	Other L2.3c
Brain/Central Nervous System (invasive)	19	7	81
Breast (invasive)	84	94	509
Colorectal (invasive)	75	36	373
Gynaecological (invasive)	62	45	214
Haematological (invasive)	58	0	323
Head and Neck (invasive)	29	10	139
Lung (invasive)	108	18	558
Sarcoma (invasive)	13	2	42
Skin (invasive)	92	103	782
Upper Gastrointestinal (invasive)	76	28	387
Urological (invasive)	147	60	803
Other (invasive)	31	14	141



# Sample revised Level 2 report

## COSD Level 2 - Trust MDT Data Quality & Completeness Report - Released August 2014

### Summary Results for All Cancers (or the Cancer Site Group Selected)

L2.1 Data Quality and Completeness for Diagnosis Period		Diagnosis April 2014 FINAL		Diagnosis May 2014 PROVISIONAL		Diagnosis June 2014 PROVISIONAL		Expected Numbers
L2.1a	Number of cases Diagnosed	350		340		310		TBC
L2.1b	Number of cases Diagnosed with a Treatment Record Submitted	300		280		100		N/A
L2.1c	Number of cases Diagnosed where the First Treatment was Surgery	270		260		90		N/A
L2.1d	Number of cases with a Basis of Diagnosis	346	99%	338	99%	300	97%	TBC
L2.1e	Number of cases with a Histological Basis of Diagnosis	270	77%	262	77%	230	74%	N/A
L2.1f	Number of cases with a CNS Indication Code Submitted	301	86%	320	94%	299	96%	TBC
L2.1g	Number of cases Diagnosed who had CNS Contact	270	77%	299	88%	280	90%	TBC
L2.1h	Number of cases Discussed at an MDT	250	71%	260	76%	243	78%	N/A
L2.2 - Completeness for all cases discussed at an MDT								
	Number of cases Discussed at an MDT	250		260		243		
L2.2a	Number of cases with a Performance Status	231	92%	210	81%	37	15%	85%
L2.2b	Number of cases with a usable stage value	128	51%	83	32%	26	12%	70%
L2.3 - Breakdown of Staging Completeness								
		Full stage		Partial stage		No stage		National Average
L2.3a	Total and % of cases with pre-treatment stage	100	78%	10	8%	18	14%	TBC
L2.3b	Total and % of cases with an integrated stage	40	31%	2	2%	86	67%	TBC
L2.3c	Total and % of cases with a site specific stage	18	14%	N/A	N/A	110	86%	TBC

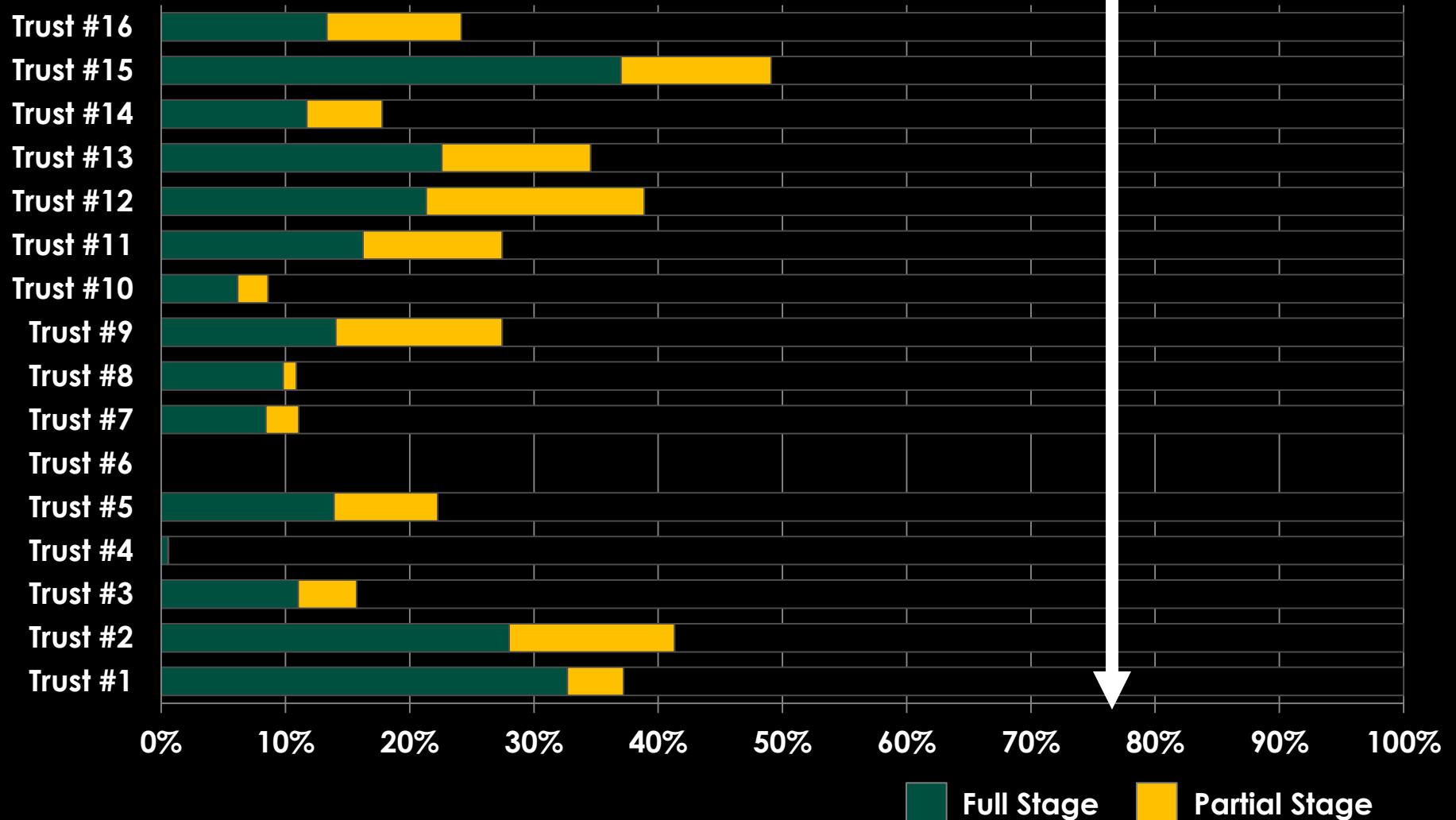
# Proposed Tumour groupings

- Invasive Upper GI Cancers
  - OG and Gall bladder (C15-C16, C23)
  - Hepato Pancreato Biliary! (C22, C24, C25)
  - Endocrine tumours (Thyroid/parathyroid/Adrenal) (C73-C75)
- Non invasive Cancers
  - ALL D CODES (EXCLUDING D32/D33)

# London Cancer Alliance

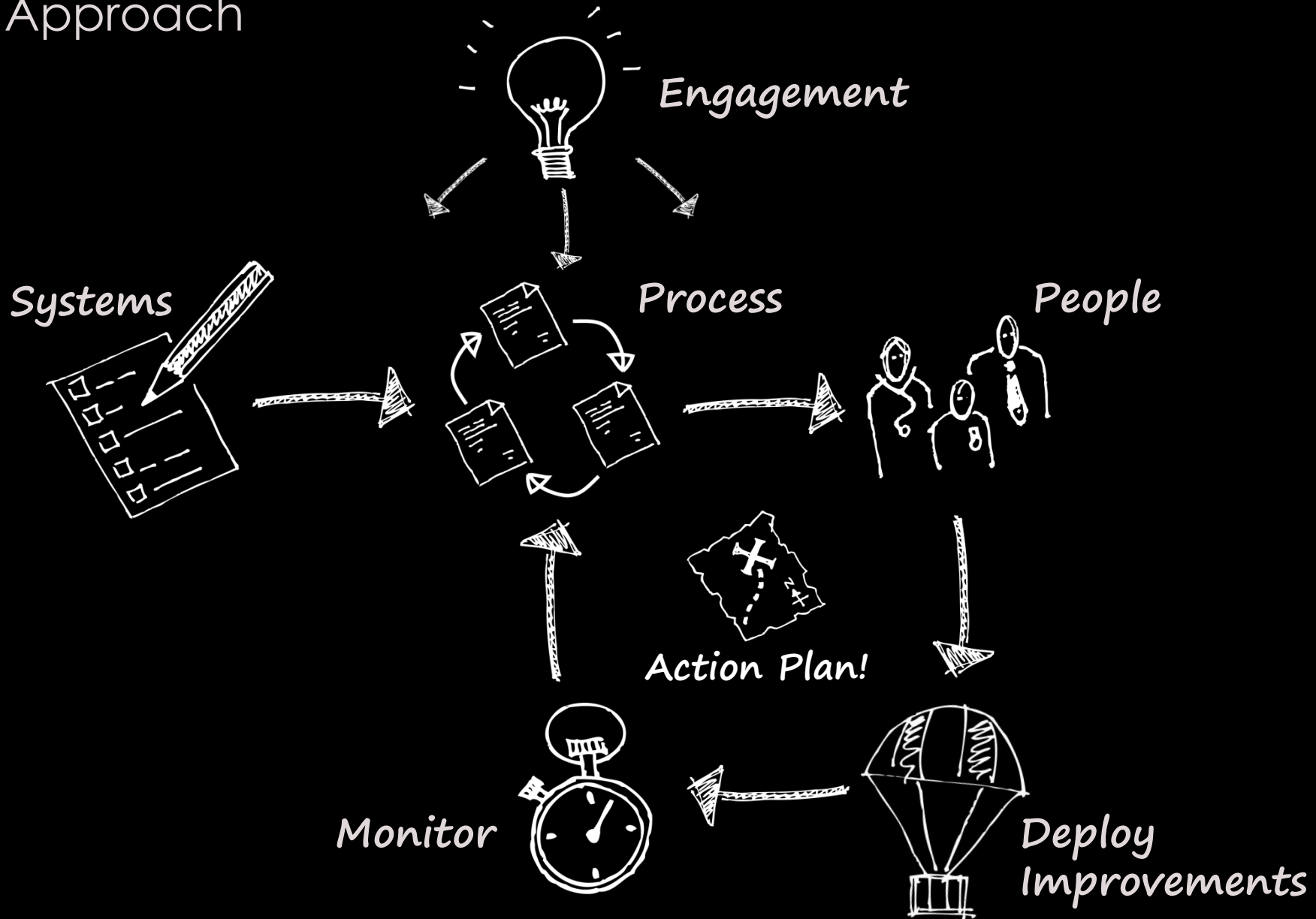
## Staging Completeness 2011 / 2012

70% Target



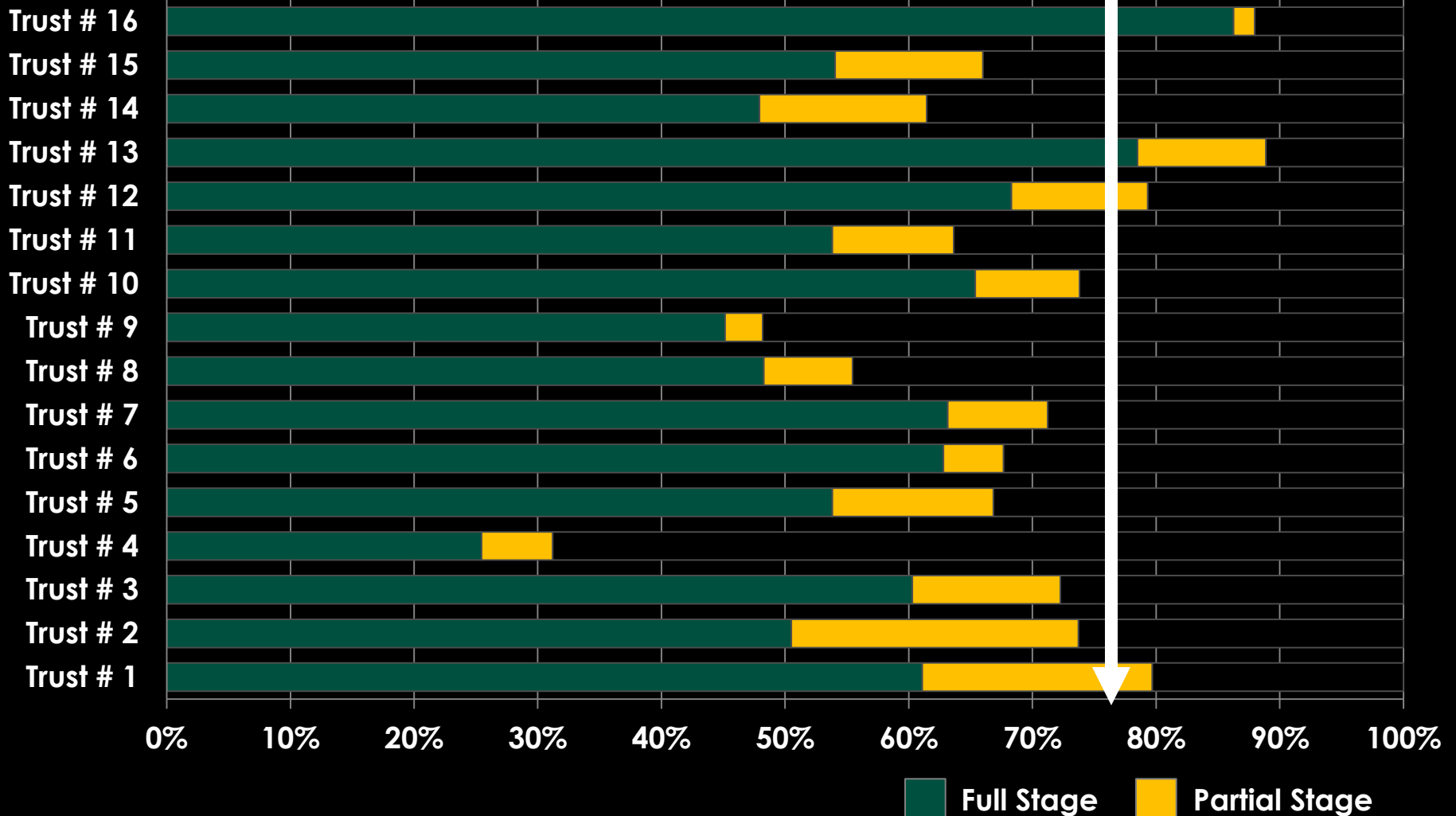
# System, Process and People

## An Approach



# London Cancer Alliance

## Staging Completeness 2012 /2013



# Level 3 - Compiled monthly summary reports

- By MDT/Tumour group and Provider for month of diagnosis
- MDT/Shared Pathway
- Available within **six months** of submission
- Breakdown by:
  - Diagnosis
  - Basis of diagnosis
  - **CNS contact**
  - Stage
  - Performance Status
  - Treatment type
  - ???

# Level 4 - Clinical reports

- Development begins this year
- Consultation with clinical teams
  - SSCRGs
  - Network site specific groups
- Need to align with
  - Service profiles
  - Peer review clinical lines of enquiry
  - National and professional body audits

# Moving forward

- Keeping dataset up to date
  - Annual revision
  - SNOMED CT project
- Reports
  - Portal
  - Development
  - Distribution
- Communications with Clinical teams
  - NCRS Data improvement teams
  - Updating lists
  - COSD Newsletter/website



# Thank you

Queries to: [cosd@ncin.org.uk](mailto:cosd@ncin.org.uk)