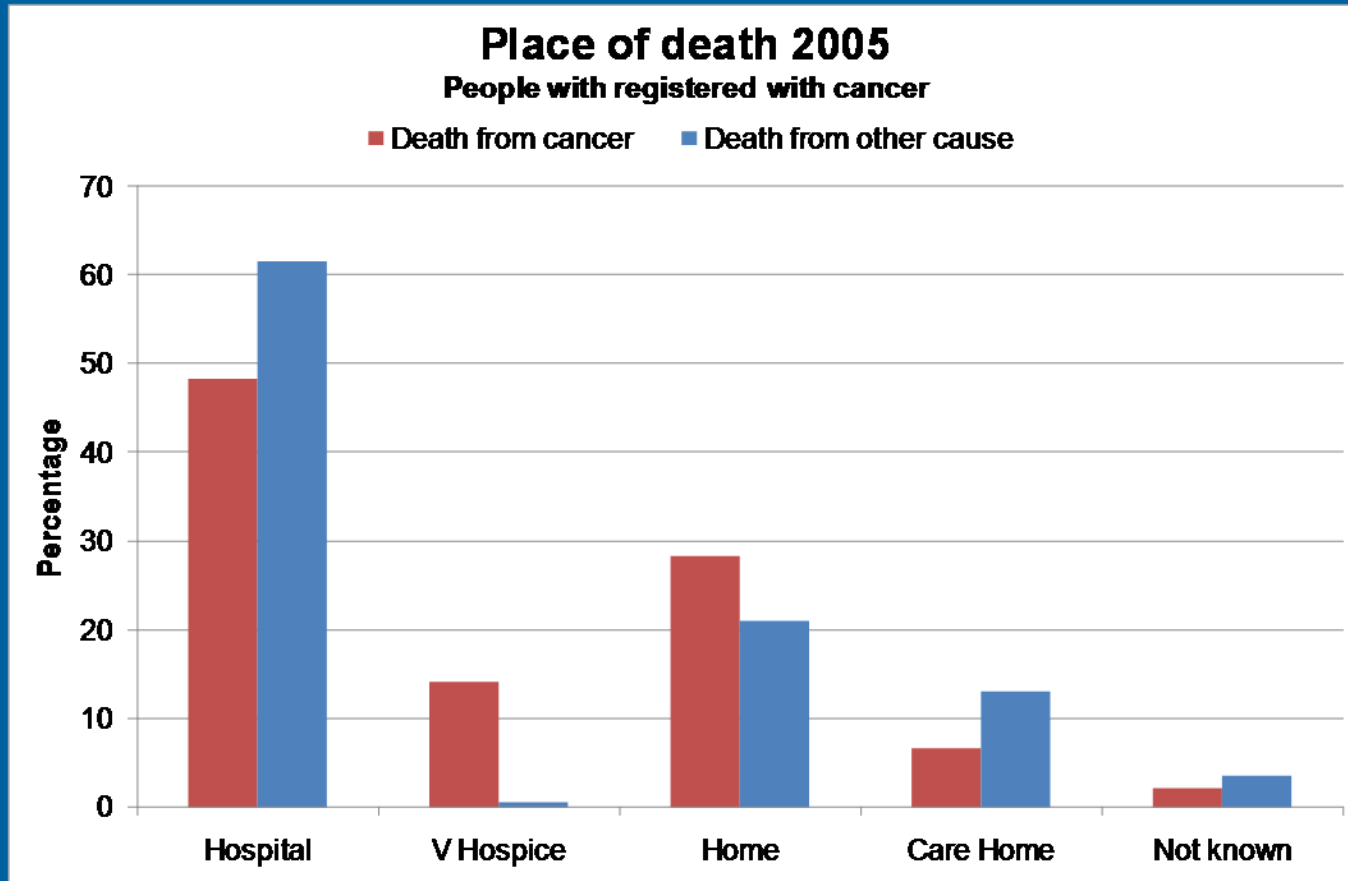


# *Patterns of Hospital Care among people who will die from cancer*

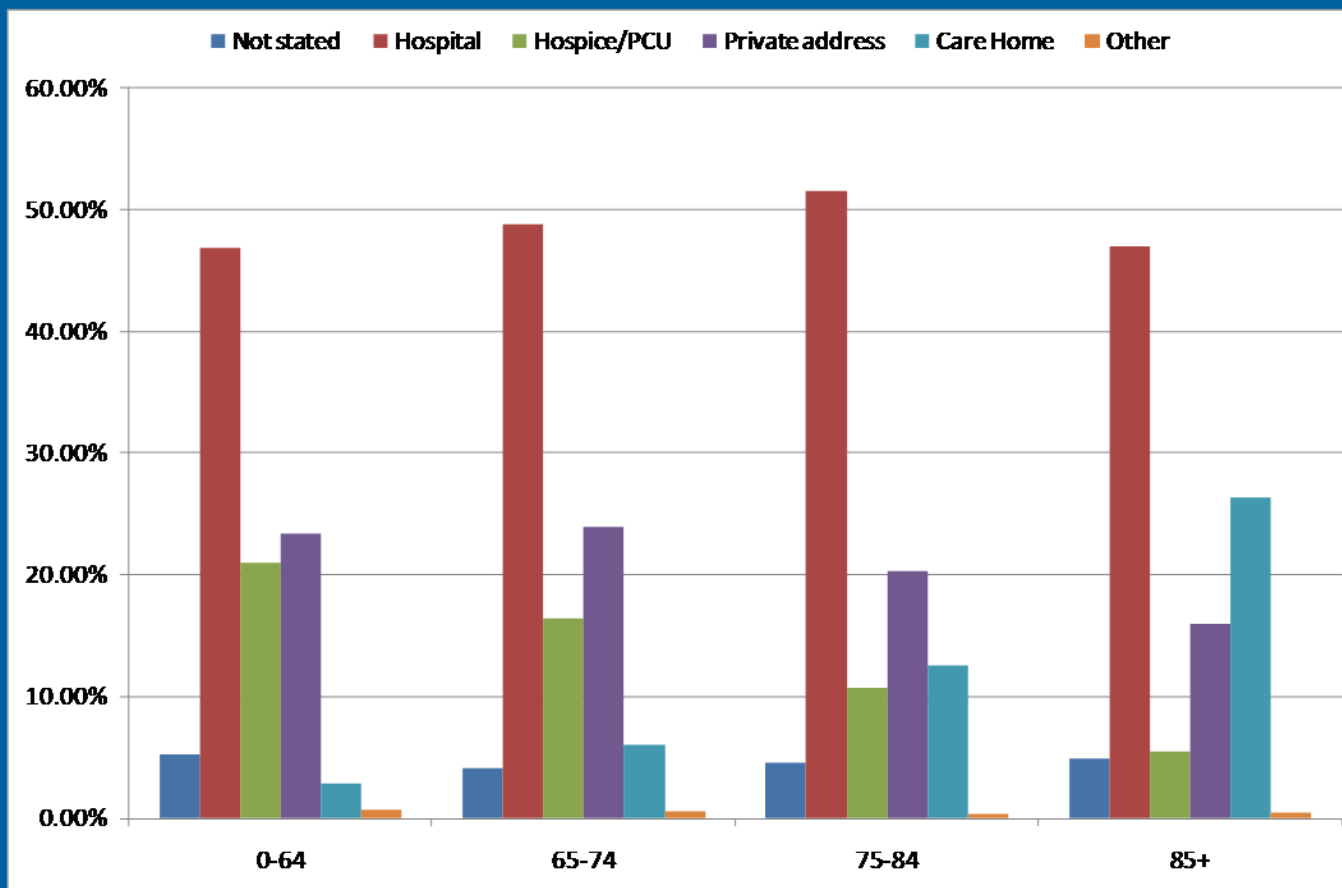
Andy Pring  
Julia Verne

# Place of Death



# Age distribution by place of death

people who died from breast, colorectal, lung urological or prostate cancer



# Hospital Episode Statistics

# Hospital Episode Statistics

## Cancer Register

People who die from  
bladder, breast,  
colorectal, lung,  
prostate cancer  
(2002-2006)



## HES

All episodes between  
1998 and 2006

Link

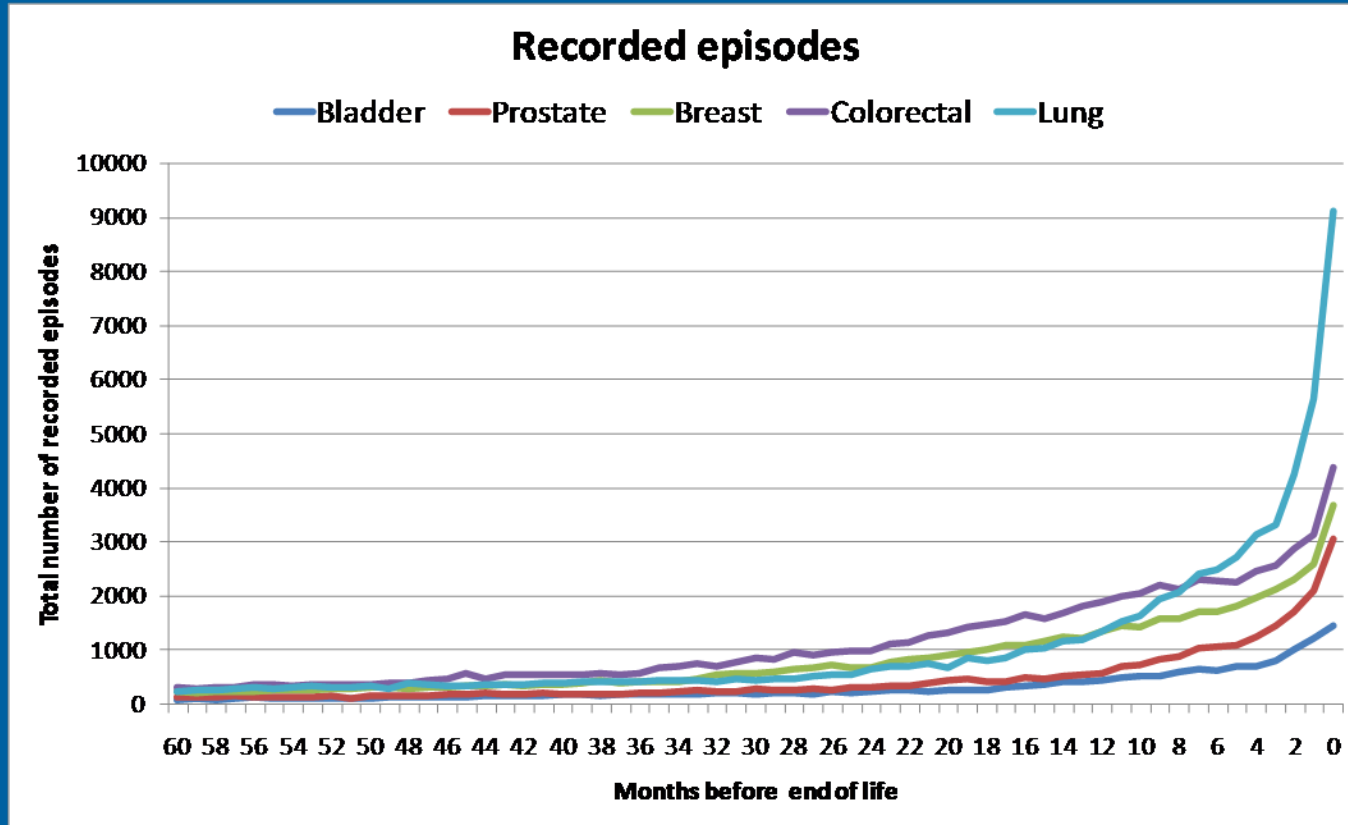
NHS No  
DOB  
Postcode  
Sex

85%

# Included patients

<b>Bladder</b>	2098
<b>Prostate</b>	4800
<b>Breast</b>	5201
<b>Colorectal</b>	6695
<b>Lung</b>	10546

# Episodes



# Time spent in hospital – bed-days

## Average bed-days in last 6 months

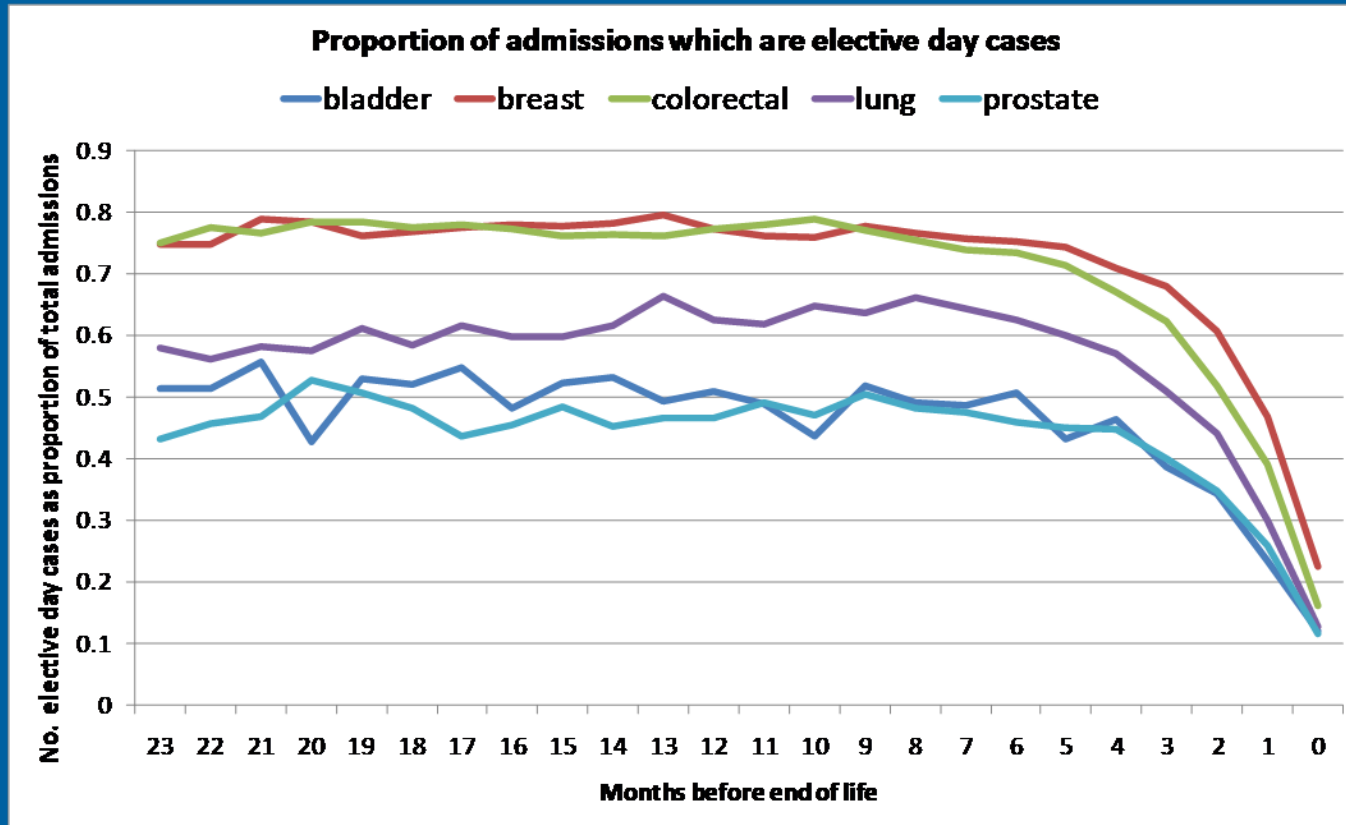
Cancer site	Days
Bladder	32.6
Breast	22.9
Colorectal	26.2
Lung	22.5
Prostate	27.3

## Half the total bed-days

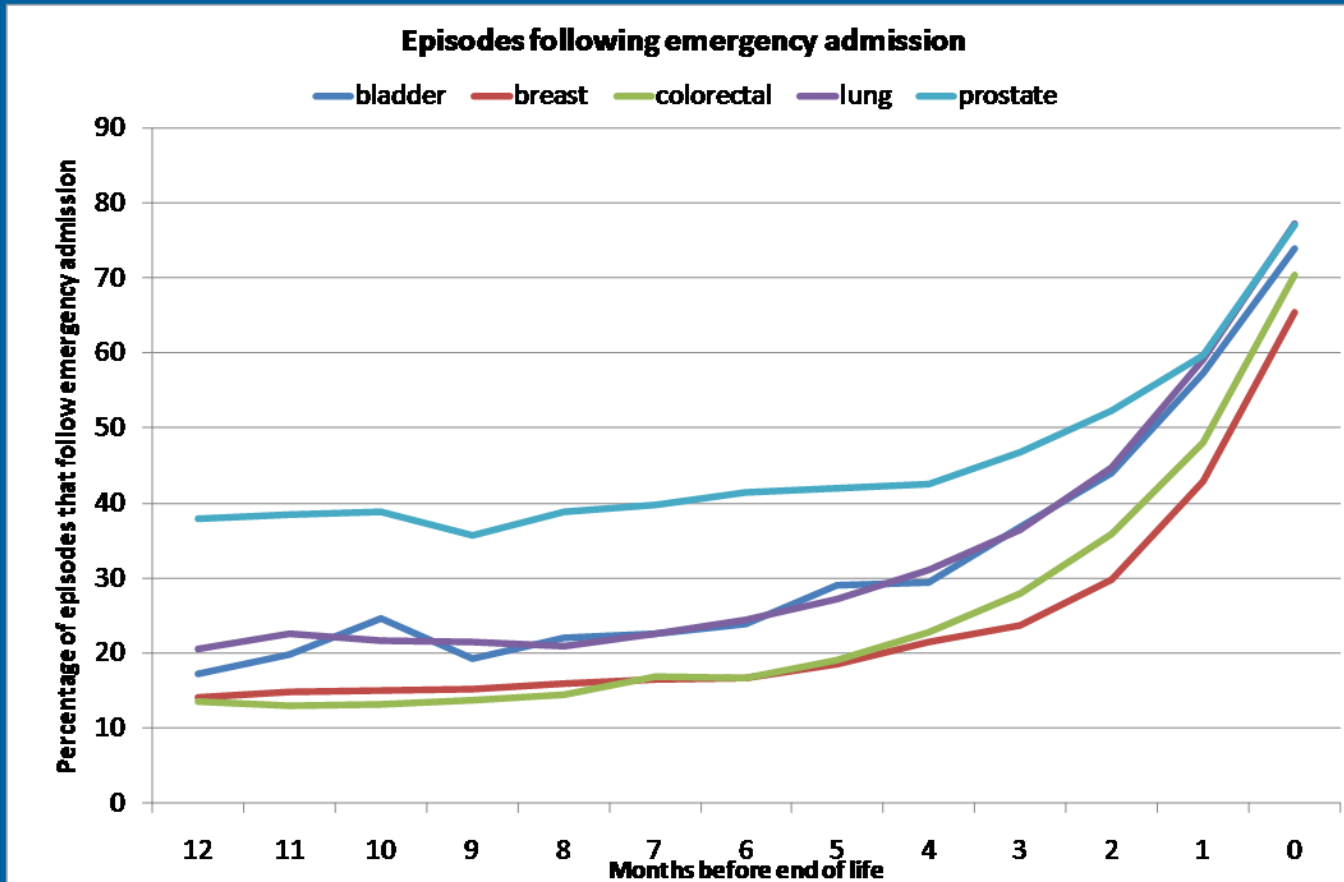
Cancer site	Months
Bladder	7
Breast	8
Colorectal	9
Lung	4
Prostate	7



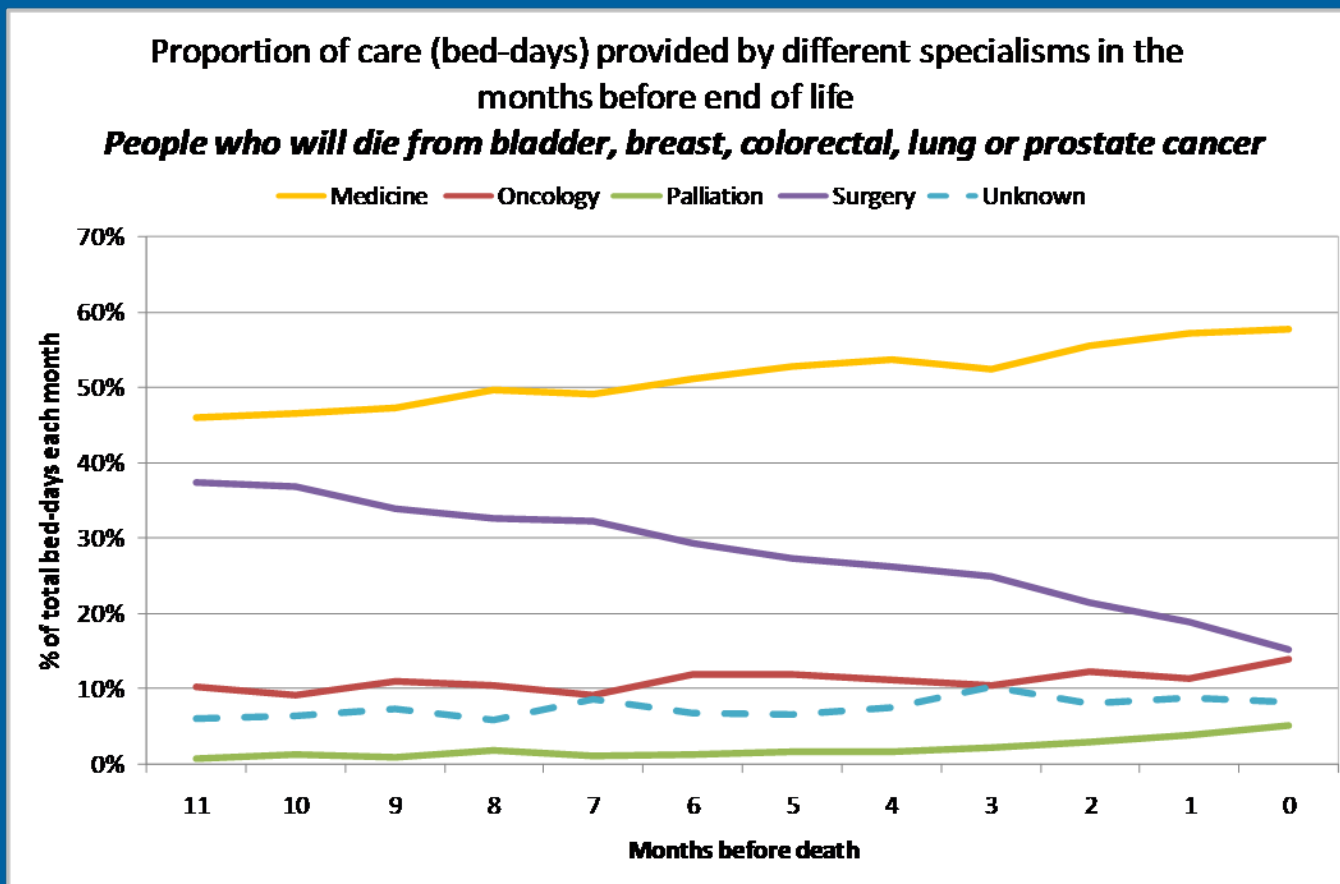
# Elective day cases



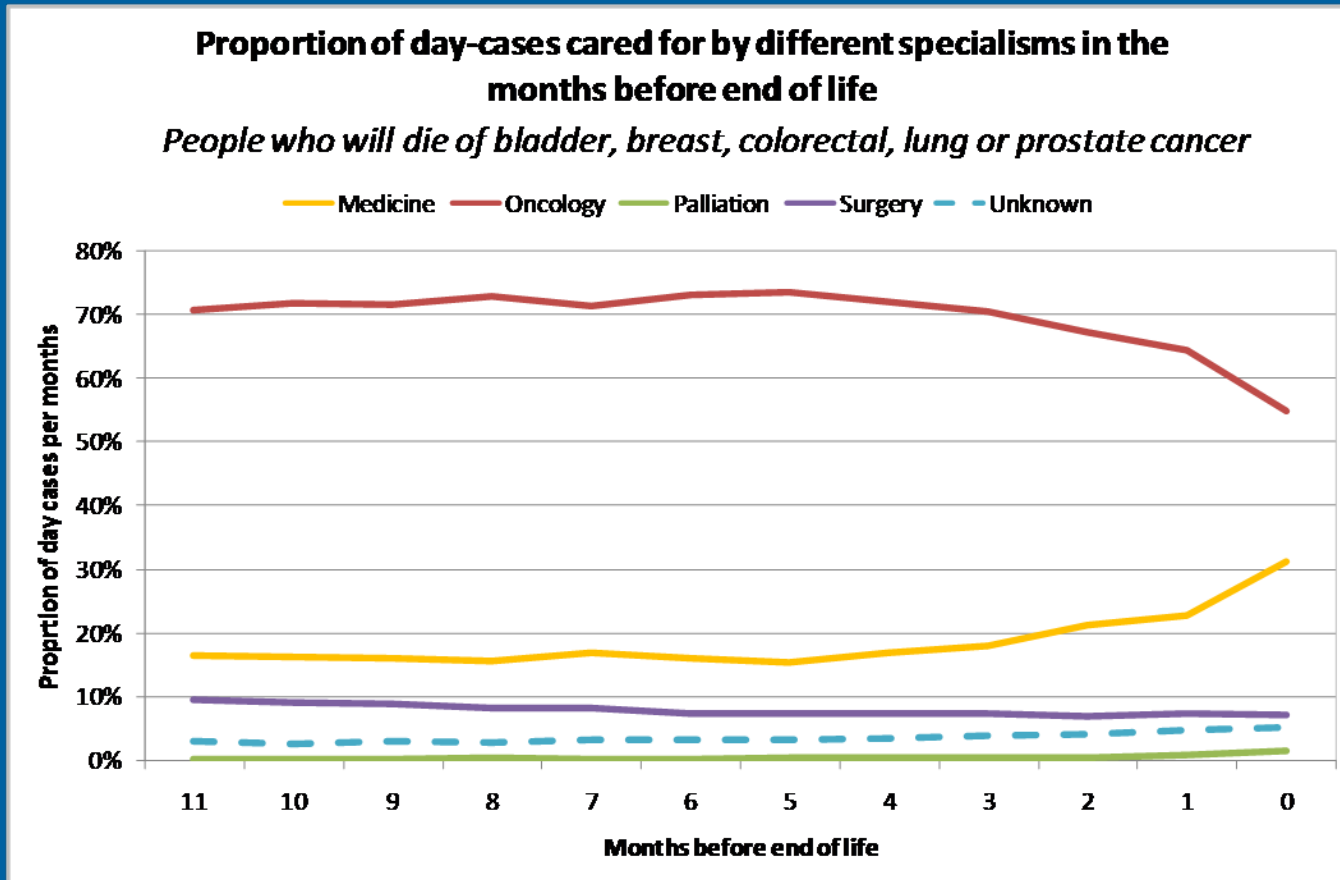
# Following emergency admission



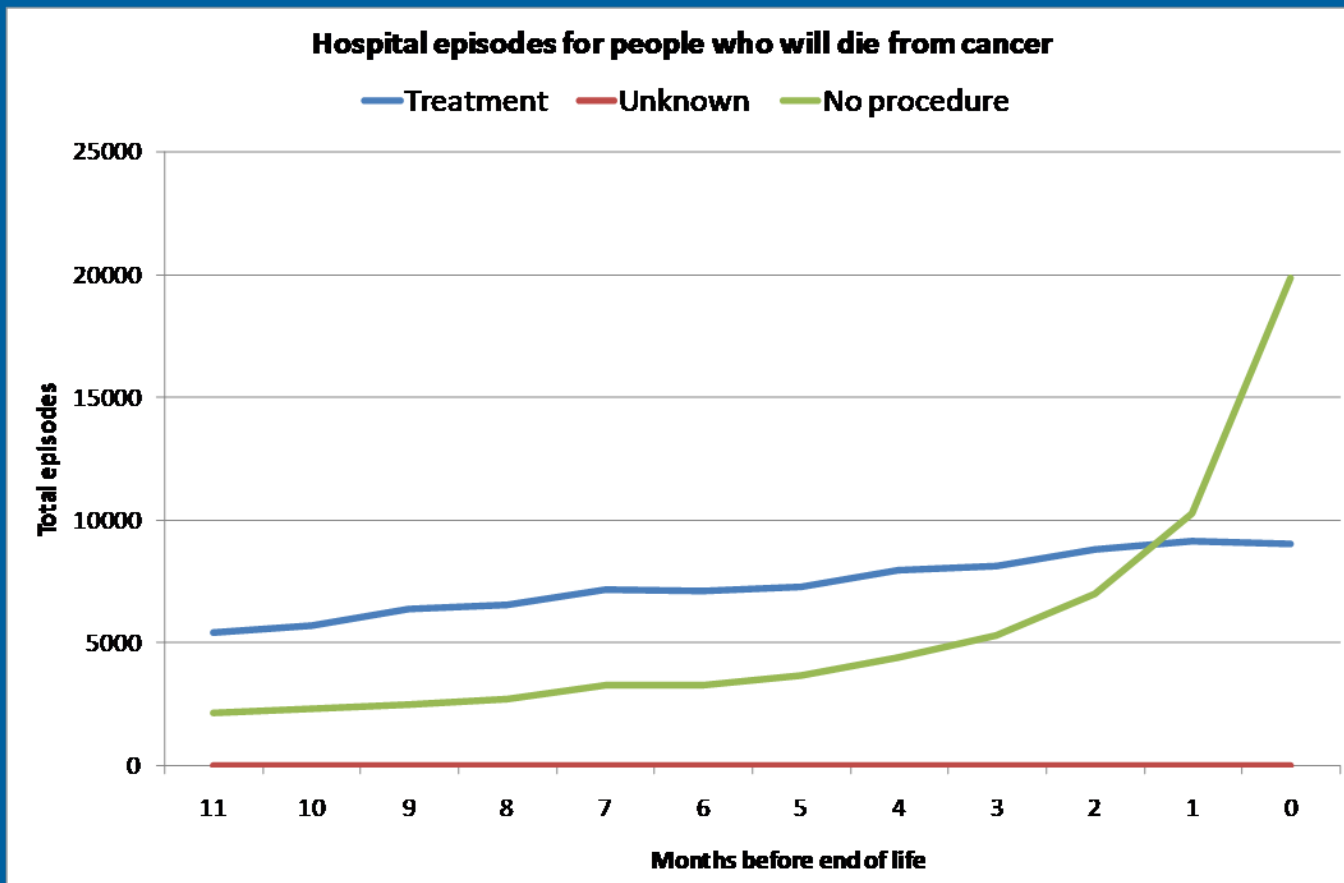
# Specialisms caring for cancer patients



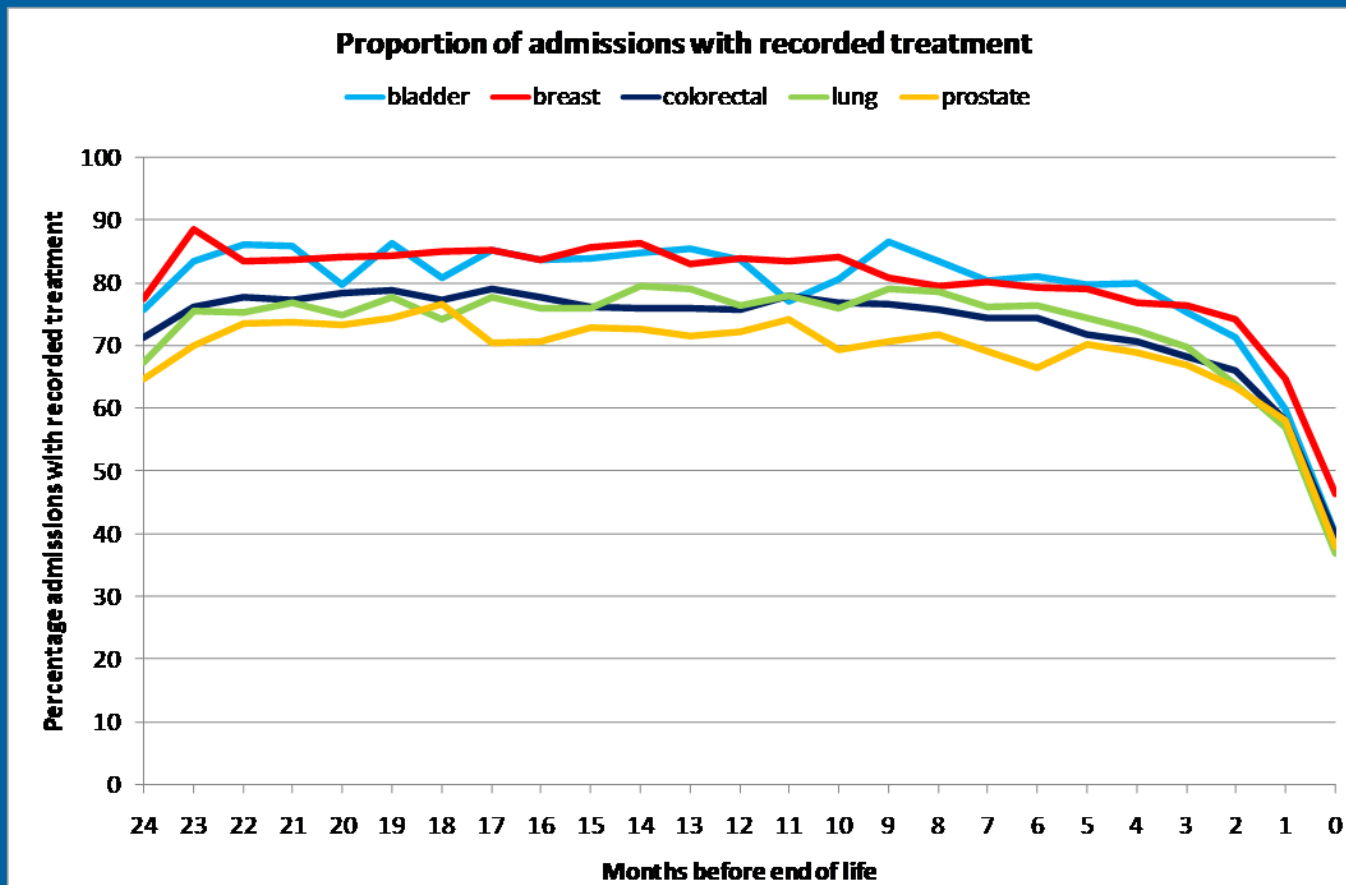
# Specialisms caring for cancer patients



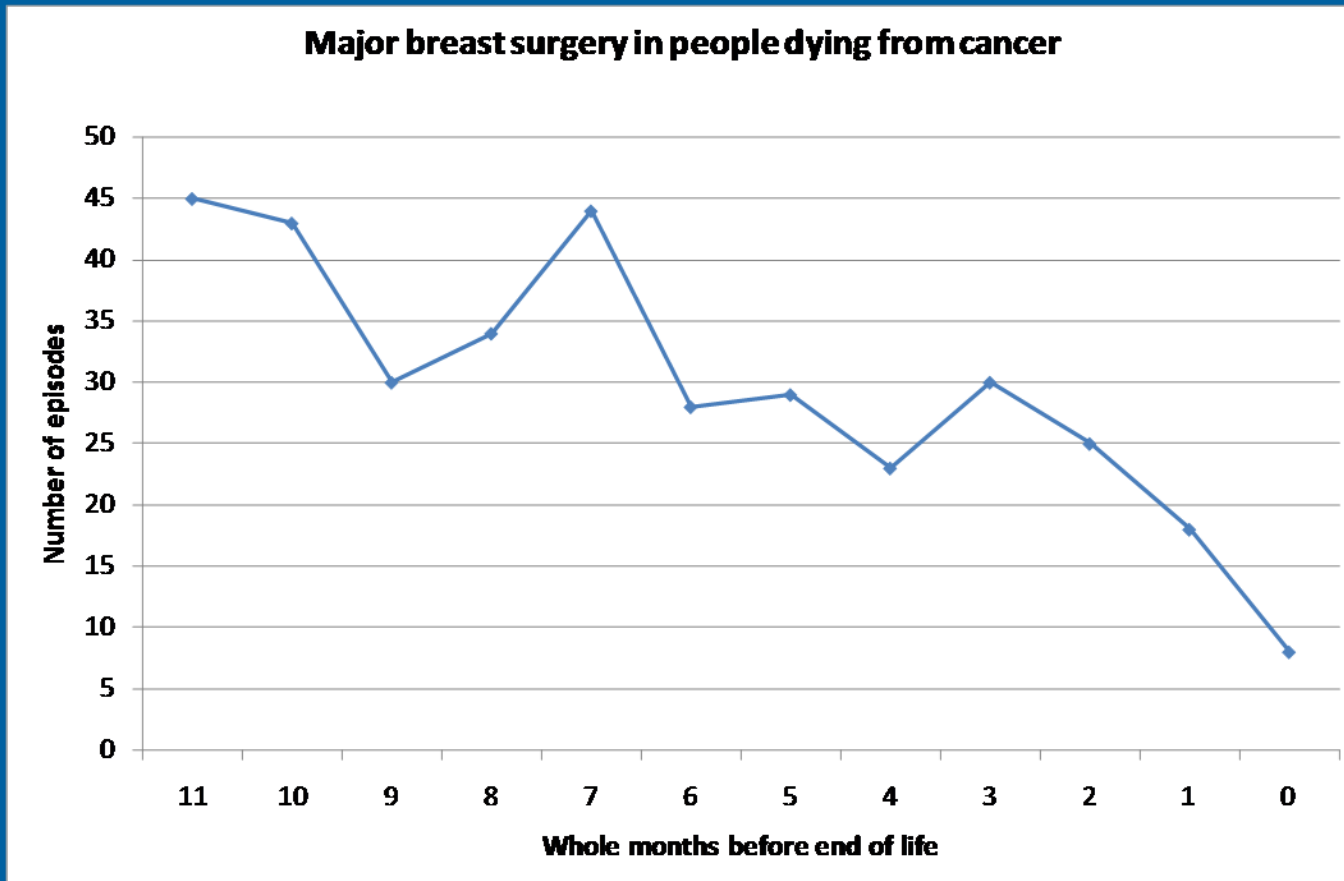
# Treatment



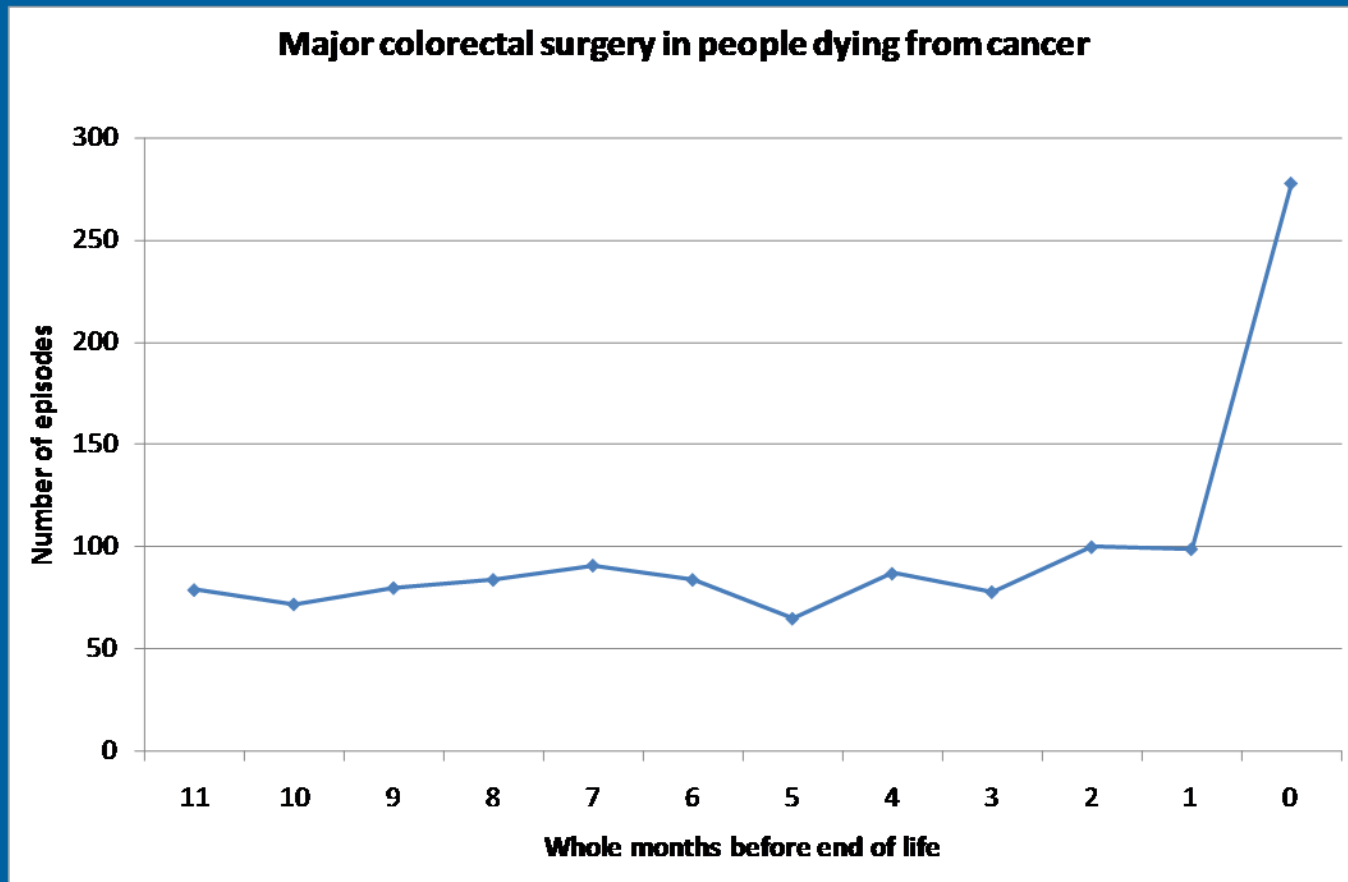
# Treatment



# Treatment

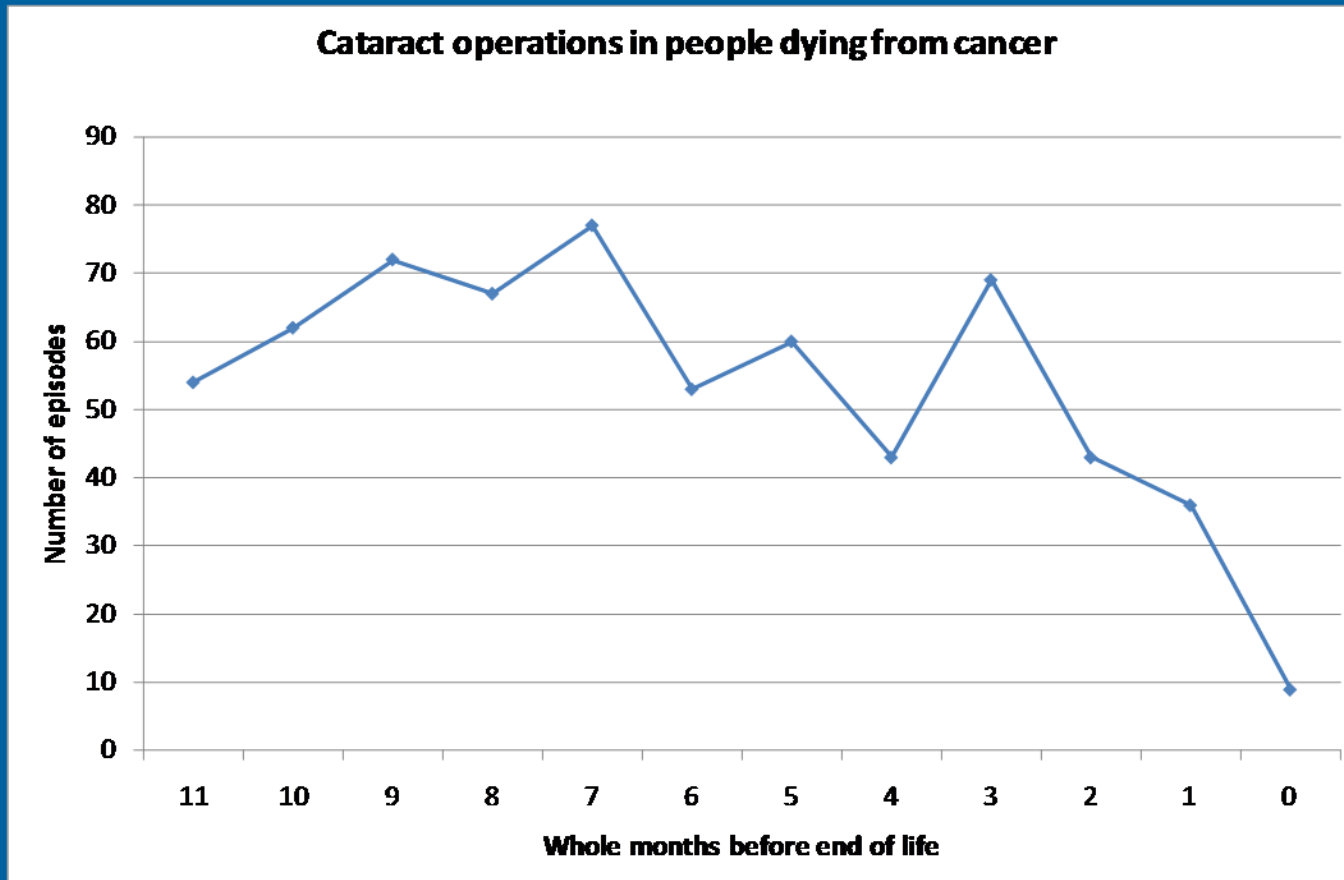


# Treatment

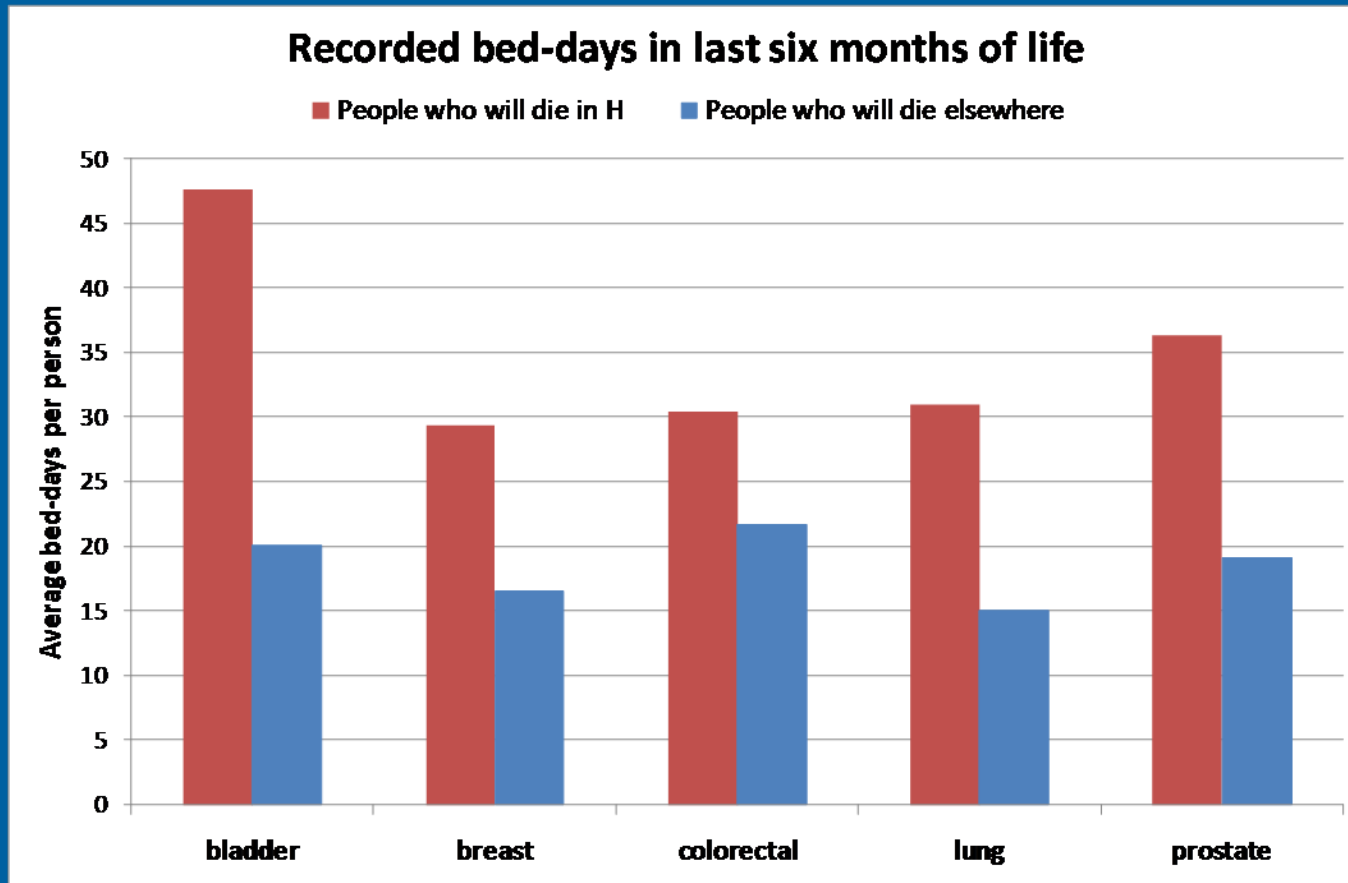




# Treatment



# Is there a difference between those who die in hospital or elsewhere ?



# To conclude



# Place of death by Type of residence

people who died from breast, colorectal, lung urological or prostate cancer

