

NCIN Children, Teenagers & Young Adults with Cancer (CTYA) Workshop



11 December 2013



The Context for commissioning

- Clinical leadership is at the heart of NHS England's landscape
- Preventing people from dying prematurely
- Enhancing quality of life for people with long term conditions
- Helping people to recover from episodes of ill health or following injury
- Ensuring that people have a positive experience of care
- Treating and caring for people in a safe environment and protecting them from avoidable harm
- Promoting equality and reducing inequalities
- Deliver the NHS Constitution Be excellent Live within our means

The Commissioning Landscape

- **Process for planning, agreeing and monitoring services**
- 211 Clinical commissioning groups
- Public health England
- NHS England (27 Teams – operating as one)
 - Specialised services (10 Area from the 27)
 - Primary care
 - Offender health
 - Military health
 - Commissioning support units

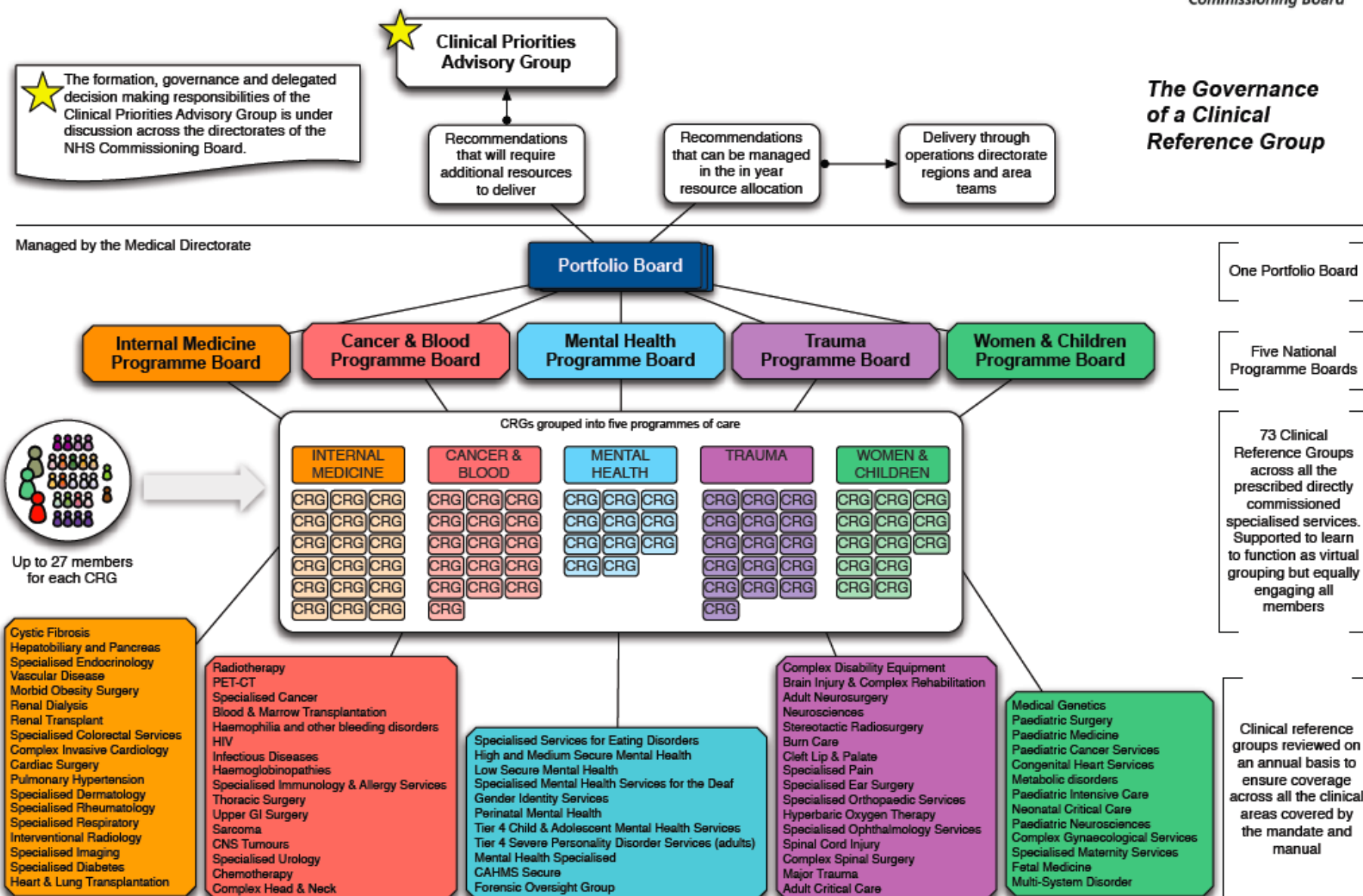
Clinical advice and leadership to inform Commissioning

- 12 Clinical Senates
- Helping CCGs, Health and Wellbeing Boards and NHS England to make the best decisions about healthcare for the populations they represent
- Strategic clinical networks
 - Cancer
 - Cardiovascular
 - Maternity and Children Mental health, dementia and neurological conditions
- Operational Delivery networks
- Clinical Reference Groups

The operating model for specialised services

- NHS England
- Five Programme of Care
- 74 Clinical Reference Groups covering 143 specialised services
- 10 Area Teams linked to 4 Regions

The Governance of a Clinical Reference Group



Clinical Reference Groups and Regional and Area Teams

- **CRGs**
- Clinical membership to CRGs supported on a voluntary basis
- Patient and public involvement
- Stakeholders
- Responsible for producing 'contract products'
 - Service specifications Clinical access policy Quality measures and dashboards

Regions and Area Teams

- Responsible for contracting with specialised providers
- Implementing CRG products Market review to ensure the right capacity

5 Year strategy for specialised services

- NHS England is developing a 5 year strategy for specialised services
- The bulk of the strategy will feed into the the five years from 2015/16 to 2019/20
- “The strategy will be aspirational in its goals and achievable in its objectives”
- The strategy is due March 2014

In summary

- Clinically led commissioning system
- It operates as a single system
- Standard contract products
- Included in contracts by Area Teams and delivered by hospitals
- 13/14 was our first year as a single system
- 14/15 we should get better at this
- 5 Year strategy