

NCIN
national cancer
intelligence network



Using information to improve quality & choice

What is the NCIN?

Dr Mick Peake

Clinical Lead, NCIN

www.ncin.org.uk

NCIN

national cancer
intelligence network

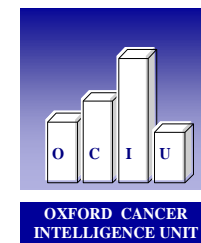
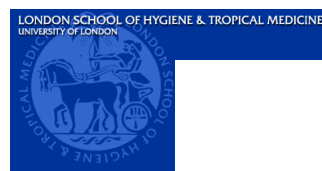


Using information to improve quality & choice

Goal for NCIN: “To develop the best cancer information service of any large country in the world – by 2012”

www.ncin.org.uk

NCIN Partners



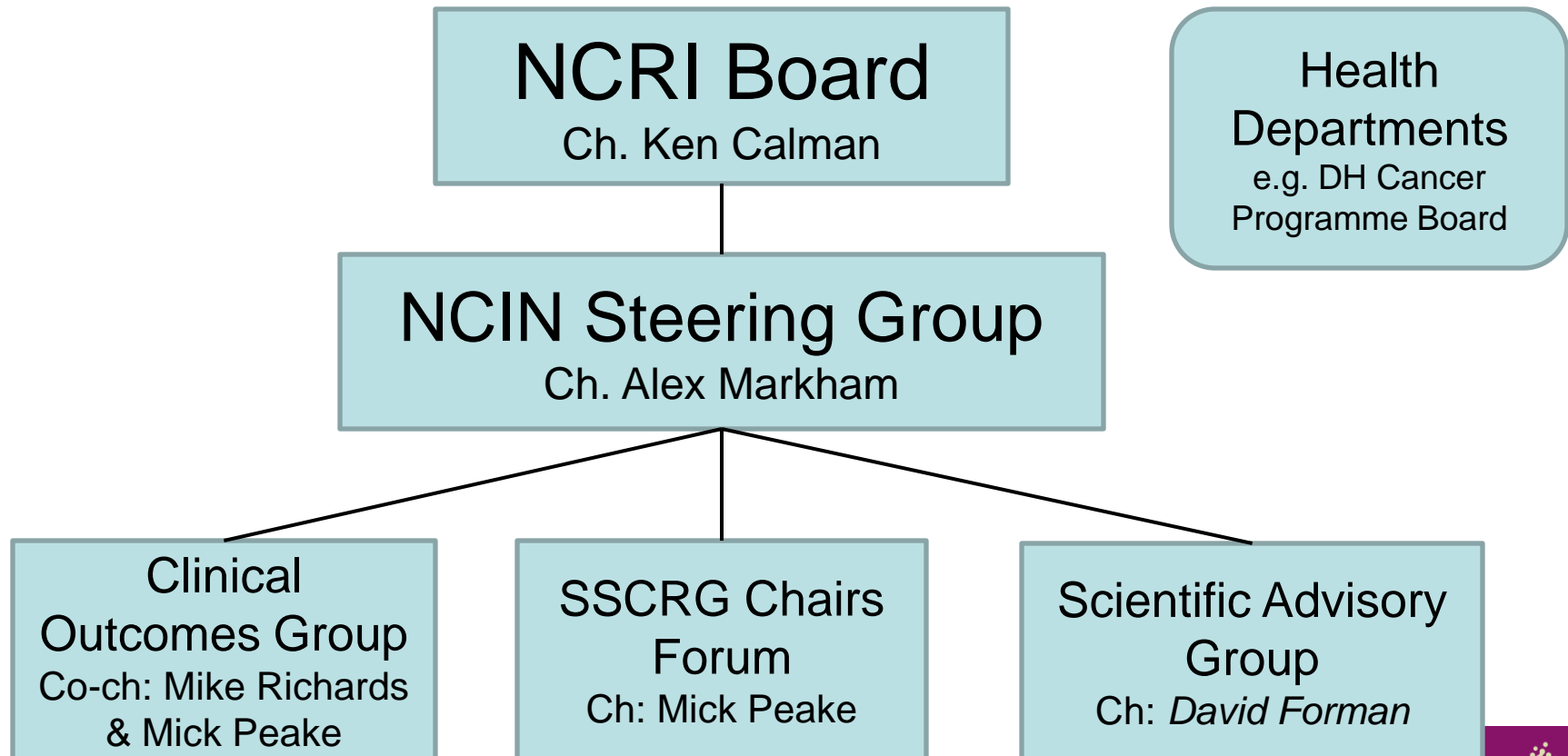
Using information to improve quality & choice

NCRI Members



Using information to improve quality & choice

NCIN Governance



NCIN core objectives



- **Promoting efficient and effective data collection throughout the cancer journey**
- **Providing a common national repository for cancer datasets**
- **Producing expert analyses, based on robust methodologies, to monitor patterns of cancer care**
- **Exploiting information to drive improvements in standards of cancer care and clinical outcomes**
- **Enabling use of cancer information to support audit and research programmes**

Site-Specific Clinical Reference Groups

- Brain/CNS
- Breast
- Children, Teenage & Young Adults
- Colo-rectal
- Gynaecological cancers
- Haematological cancers (including lymphoma)
- Head & Neck (including thyroid)
- Lung (including mesothelioma)
- Bone & soft tissue Sarcoma
- Skin (including non-melanoma)
- Upper GI (including Hepato-biliary)
- Urology (all 4 sub-types)

Main issues for SSCRGs

- Development of a work programme (linked to national priorities)
- Support for data set development
- Identification of main clinical indicators
- Supporting the development of Peer Review measures
- Advising on co-morbidity/radiology etc.
- Improving staging (engaging pathologists)
- Promoting clinical (and public) engagement
- Advising on reporting
- Making the most of links with the research community
- Supporting the use of data to change clinical practice
- Advising on care pathways (Map of Medicine)

Main issues for SSCRGs

- Development of a **work programme** (linked to national priorities)
- Support for data set development
- Identification of main clinical indicators
- Supporting the development of Peer Review measures
- Advising on co-morbidity/radiology etc.
- Improving staging (engaging pathologists)
- Promoting clinical (and public) engagement
- Advising on reporting
- Making the most of links with the research community
- Supporting the use of data to change clinical practice
- Advising on care pathways (Map of Medicine)

Main issues for SSCRGs

- Development of a work programme (linked to national priorities)
- Support for **data set development**
- Identification of main clinical indicators
- Supporting the development of Peer Review measures
- Advising on co-morbidity/radiology etc.
- Improving staging (engaging pathologists)
- Promoting clinical (and public) engagement
- Advising on reporting
- Making the most of links with the research community
- Supporting the use of data to change clinical practice
- Advising on care pathways (Map of Medicine)

Main issues for SSCRGs

- Development of a work programme (linked to national priorities)
- Support for data set development
- Identification of main **clinical indicators**
- Supporting the development of Peer Review measures
- Advising on co-morbidity/radiology etc.
- Improving staging (engaging pathologists)
- Promoting clinical (and public) engagement
- Advising on reporting
- Making the most of links with the research community
- Supporting the use of data to change clinical practice
- Advising on care pathways (Map of Medicine)

Main issues for SSCRGs

- Development of a work programme (linked to national priorities)
- Support for data set development
- Identification of main clinical indicators
- Supporting the development of **Peer Review measures**
- Advising on co-morbidity/radiology etc.
- Improving staging (engaging pathologists)
- Promoting clinical (and public) engagement
- Advising on reporting
- Making the most of links with the research community
- Supporting the use of data to change clinical practice
- Advising on care pathways (Map of Medicine)

Main issues for SSCRGs

- Development of a work programme (linked to national priorities)
- Support for data set development
- Identification of main clinical indicators
- Supporting the development of Peer Review measures
- Advising on **co-morbidity/radiology etc.**
- Improving staging (engaging pathologists)
- Promoting clinical (and public) engagement
- Advising on reporting
- Making the most of links with the research community
- Supporting the use of data to change clinical practice
- Advising on care pathways (Map of Medicine)

Main issues for SSCRGs

- Development of a work programme (linked to national priorities)
- Support for data set development
- Identification of main clinical indicators
- Supporting the development of Peer Review measures
- Advising on co-morbidity/radiology etc.
- Improving **staging** (engaging pathologists)
- Promoting clinical (and public) engagement
- Advising on reporting
- Making the most of links with the research community
- Supporting the use of data to change clinical practice
- Advising on care pathways (Map of Medicine)

Main issues for SSCRGs

- Development of a work programme (linked to national priorities)
- Support for data set development
- Identification of main clinical indicators
- Supporting the development of Peer Review measures
- Advising on co-morbidity/radiology etc.
- Improving staging (engaging pathologists)
- Promoting **clinical (and public) engagement**
- Advising on reporting
- Making the most of links with the research community
- Supporting the use of data to change clinical practice
- Advising on care pathways (Map of Medicine)

Main issues for SSCRGs

- Development of a work programme (linked to national priorities)
- Support for data set development
- Identification of main clinical indicators
- Supporting the development of Peer Review measures
- Advising on co-morbidity/radiology etc.
- Improving staging (engaging pathologists)
- Promoting clinical (and public) engagement
- Advising on **reporting**
- Making the most of links with the research community
- Supporting the use of data to change clinical practice
- Advising on care pathways (Map of Medicine)

Main issues for SSCRGs

- Development of a work programme (linked to national priorities)
- Support for data set development
- Identification of main clinical indicators
- Supporting the development of Peer Review measures
- Advising on co-morbidity/radiology etc.
- Improving staging (engaging pathologists)
- Promoting clinical (and public) engagement
- Advising on reporting
- Making the most of **links with the research community**
- Supporting the use of data to change clinical practice
- Advising on care pathways (Map of Medicine)

Main issues for SSCRGs

- Development of a work programme (linked to national priorities)
- Support for data set development
- Identification of main clinical indicators
- Supporting the development of Peer Review measures
- Advising on co-morbidity/radiology etc.
- Improving staging (engaging pathologists)
- Promoting clinical (and public) engagement
- Advising on reporting
- Making the most of links with the research community
- Supporting the use of data to **change clinical practice**
- Advising on care pathways (Map of Medicine)

Main issues for SSCRGs

- Development of a work programme (linked to national priorities)
- Support for data set development
- Identification of main clinical indicators
- Supporting the development of Peer Review measures
- Advising on co-morbidity/radiology etc.
- Improving staging (engaging pathologists)
- Promoting clinical (and public) engagement
- Advising on reporting
- Making the most of links with the research community
- Supporting the use of data to change clinical practice
- Advising on **care pathways** (Map of Medicine)

Other workstreams

- Pathology
- Radiology
- Radiotherapy (NRIG)
- Chemotherapy (NCIG)
- Co-morbidity – C-M Advisory Group

Coordinated National Data Management



- Linked National Cancer Data Repository (NCDR)
 - ONS Registration record
 - Extended registry records (staging, treatments)
 - Hospital Episodes (IP)
 - Covers England only
- GPRD (controlled linkage)
- To Follow:
 - HES OP
 - National audit data
 - Cancer Waiting Times (referral data, recurrence)
 - Radiotherapy (mandated from April 2009)
 - HES A&E

Using information to improve quality & choice



National Cancer Data Repository (NCDR)



- Currently contains:
 - ONS up to 2006 (8m+)
 - Registries up to 2006, incl stage & treat (8m+)
 - HES up to 2008 (35m+)
 - GPRD linkage complete
- Being updated for
 - Registrations up to 2007
 - NCASP data (lung, colorectal, H&N)
 - HES outpatients
 - Radiotherapy data to follow 2010

Expert analyses

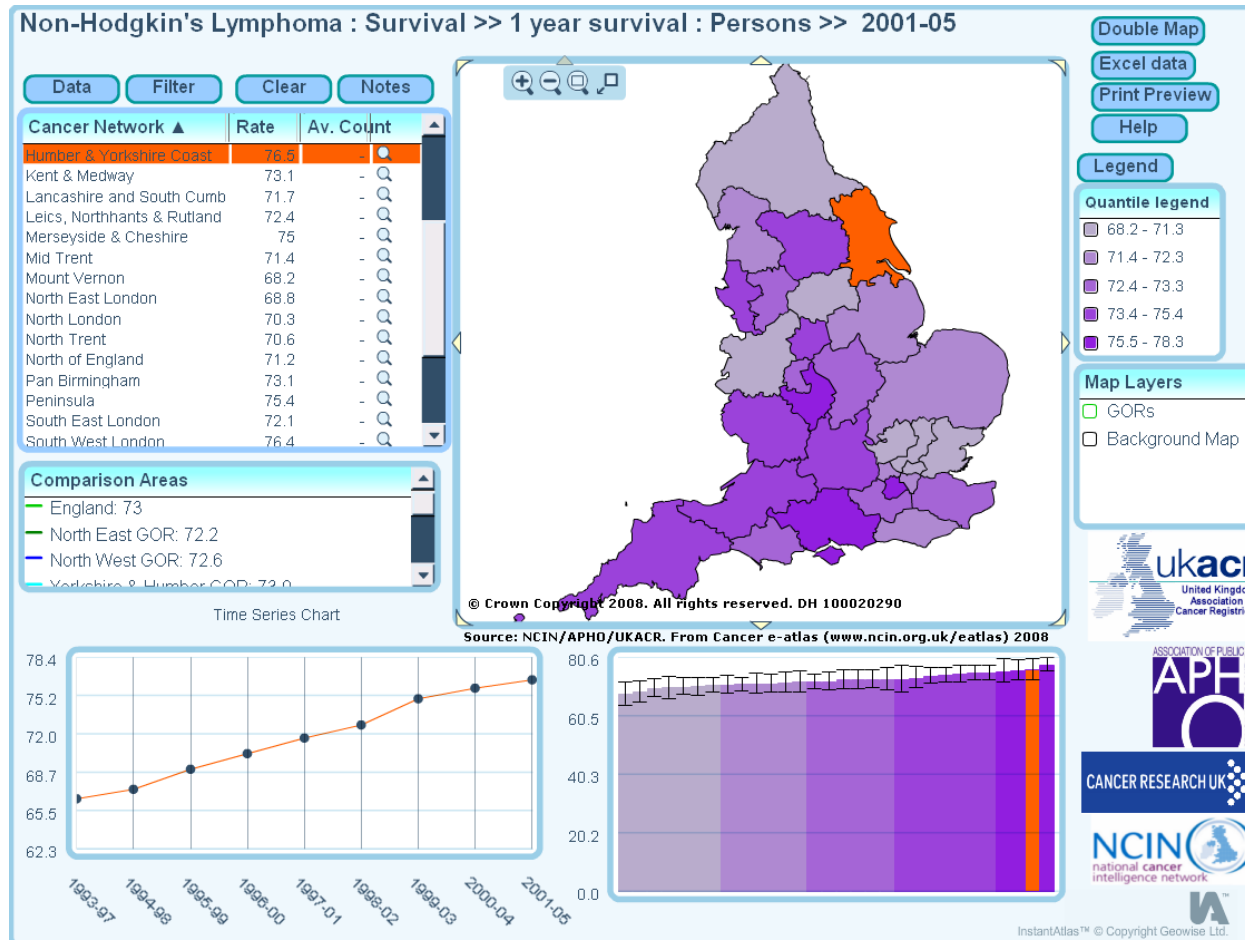
- Cancer eAtlas: - launched July 2008
www.ncin.org.uk/eatlas
 - Large and varied interest
 - International recognition
- Reports on:
 - UK incidence & mortality
 - One year survival
 - Deprivation
 - Prevalence
 - Ethnicity
 - Male cancers
 - Cancer in the Elderly
 - *Surgery (due out Q1 2010)*
- Microsites

Using information to improve quality & choice

www.ncin.org.uk

National Cancer e-Atlas

www.ncin.org.uk/eatlas



NCIN: Incidence and mortality



New cancer cases, crude and age-standardised* incidence rates per 100,000 (with 95% confidence intervals), Cancer Networks, UK, 2005



Trends in one year cancer survival, England, 1985-2004



C00-C97 excl. C44: All malignant neoplasms (excl. non-melanoma skin cancer)

Cancer Network	Males				Females				Persons			
	Number of cases	Crude rate	Age	95% confidence interval	Number of cases	Crude rate	Age	95% confidence interval	Number of cases	Crude rate	Age	95% confidence interval
All	4,417	563.5	448.9	432.0 - 489.2	4,155	544.2	388.0	346.4 - 387.8	8,572	553.1	400.9	352.1 - 459.1
N01 Leukaemia and South-Central CH	1,212	151.2	108.9	85.0 - 134.9	1,125	142.8	98.9	74.9 - 122.8	2,337	147.0	103.9	79.9 - 126.9
N02 Myeloid leukaemia and Chronic CH	1,205	150.4	108.9	85.0 - 134.9	1,125	142.8	98.9	74.9 - 122.8	2,337	147.0	103.9	79.9 - 126.9
N03 Lymphoid leukaemia and Chronic CH	1,205	150.4	108.9	85.0 - 134.9	1,125	142.8	98.9	74.9 - 122.8	2,337	147.0	103.9	79.9 - 126.9
N04 Multiple myeloma and Chronic CH	1,205	150.4	108.9	85.0 - 134.9	1,125	142.8	98.9	74.9 - 122.8	2,337	147.0	103.9	79.9 - 126.9
N05 Solid tumours CH	3,205	412.1	239.0	197.0 - 281.0	3,030	401.4	289.1	271.5 - 316.5	6,235	406.8	296.9	284.5 - 319.2
N06 Breast and Ovarian CH	1,205	150.4	108.9	85.0 - 134.9	1,125	142.8	98.9	74.9 - 122.8	2,337	147.0	103.9	79.9 - 126.9
N07 Prostate and Testicular CH	1,205	150.4	108.9	85.0 - 134.9	1,125	142.8	98.9	74.9 - 122.8	2,337	147.0	103.9	79.9 - 126.9
N08 Colon, Rectum and Anal CH	1,205	150.4	108.9	85.0 - 134.9	1,125	142.8	98.9	74.9 - 122.8	2,337	147.0	103.9	79.9 - 126.9
N09 Stomach and Duodenum CH	1,205	150.4	108.9	85.0 - 134.9	1,125	142.8	98.9	74.9 - 122.8	2,337	147.0	103.9	79.9 - 126.9
N10 Pancreatic CH	1,205	150.4	108.9	85.0 - 134.9	1,125	142.8	98.9	74.9 - 122.8	2,337	147.0	103.9	79.9 - 126.9
N11 Liver, Gallbladder and Biliary CH	1,205	150.4	108.9	85.0 - 134.9	1,125	142.8	98.9	74.9 - 122.8	2,337	147.0	103.9	79.9 - 126.9
N12 Lung, Bronchus and Oesophagus CH	1,205	150.4	108.9	85.0 - 134.9	1,125	142.8	98.9	74.9 - 122.8	2,337	147.0	103.9	79.9 - 126.9
N13 Kidney, Bladder and Uterus CH	1,205	150.4	108.9	85.0 - 134.9	1,125	142.8	98.9	74.9 - 122.8	2,337	147.0	103.9	79.9 - 126.9
N14 Thyroid CH	1,205	150.4	108.9	85.0 - 134.9	1,125	142.8	98.9	74.9 - 122.8	2,337	147.0	103.9	79.9 - 126.9
N15 Skin CH	1,205	150.4	108.9	85.0 - 134.9	1,125	142.8	98.9	74.9 - 122.8	2,337	147.0	103.9	79.9 - 126.9
N16 Brain and Nervous CH	1,205	150.4	108.9	85.0 - 134.9	1,125	142.8	98.9	74.9 - 122.8	2,337	147.0	103.9	79.9 - 126.9
N17 Eye CH	1,205	150.4	108.9	85.0 - 134.9	1,125	142.8	98.9	74.9 - 122.8	2,337	147.0	103.9	79.9 - 126.9
N18 Ear, Nose and Throat CH	1,205	150.4	108.9	85.0 - 134.9	1,125	142.8	98.9	74.9 - 122.8	2,337	147.0	103.9	79.9 - 126.9
N19 All other CH	1,205	150.4	108.9	85.0 - 134.9	1,125	142.8	98.9	74.9 - 122.8	2,337	147.0	103.9	79.9 - 126.9
England	108,000	488.9	437.9	408.9 - 466.9	118,500	481.9	382.9	345.9 - 419.9	226,500	485.9	395.9	355.9 - 435.9

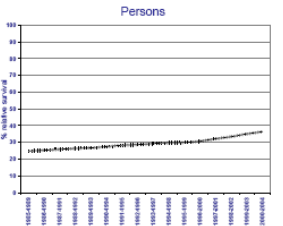
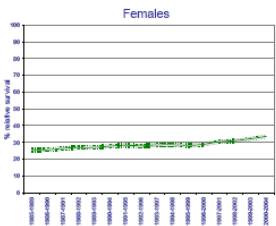
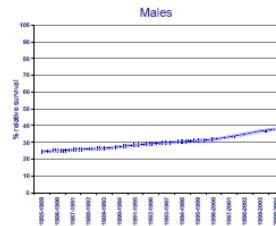
C15: Oesophagus

Years of diagnosis	Males				Females				Persons			
	Number in Cohort	Cumulative Deaths	% Crude Survival	% Relative Survival	Number in Cohort	Cumulative Deaths	% Crude Survival	% Relative Survival	Number in Cohort	Cumulative Deaths	% Crude Survival	% Relative Survival
1985-1989	11,222	6,010	29.1	24.4	6,203	3,262	24.1	20.5	19,275	10,272	23.5	20.9
1990-1994	11,425	5,948	28.9	24.4	6,302	3,192	24.0	20.7	20,027	10,134	24.0	20.8
1995-1999	14,779	10,456	29.8	24.4	8,522	5,089	26.6	22.2	24,301	17,565	28.4	24.4
2000-2004	17,156	10,559	38.1	37.9	9,724	5,607	31.6	31.6	26,880	17,166	34.6	34.6
Estimated change per 5 year cohort (%)	4.5				7.8				3.7			
P-value	0.003				0.003				0.001			

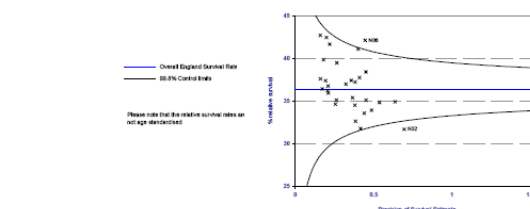
Notes on Trend
Estimated 4.5% change per 5 year cohort gives an estimated increase of 0.80% per annum.

Notes on Trend
The regression test shows no statistically significant linear change in relative survival over all four time periods. There may, however, still be significant differences between one time period and another but these have not been specifically tested.

Notes on Trend
Estimated 3.7% change per 5 year cohort gives an estimated increase of 0.74% per annum.



Cancer Network	Males				Females				Persons			
	Number in Cohort	Cumulative Deaths	% Crude Survival	% Relative Survival	Number in Cohort	Cumulative Deaths	% Crude Survival	% Relative Survival	Number in Cohort	Cumulative Deaths	% Crude Survival	% Relative Survival
All	1,111	789	29.6	24.4	629	418	27.2	20.5	1,740	1,207	30.1	22.5
N01 Leukaemia and South-Central CH	1,111	789	29.6	24.4	629	418	27.2	20.5	1,740	1,207	30.1	22.5
N02 Myeloid leukaemia and Chronic CH	1,111	789	29.6	24.4	629	418	27.2	20.5	1,740	1,207	30.1	22.5
N03 Lymphoid leukaemia and Chronic CH	1,111	789	29.6	24.4	629	418	27.2	20.5	1,740	1,207	30.1	22.5
N04 Multiple myeloma and Chronic CH	1,111	789	29.6	24.4	629	418	27.2	20.5	1,740	1,207	30.1	22.5
N05 Solid tumours CH	1,111	789	29.6	24.4	629	418	27.2	20.5	1,740	1,207	30.1	22.5
N06 Breast and Ovarian CH	1,111	789	29.6	24.4	629	418	27.2	20.5	1,740	1,207	30.1	22.5
N07 Prostate and Testicular CH	1,111	789	29.6	24.4	629	418	27.2	20.5	1,740	1,207	30.1	22.5
N08 Colon, Rectum and Anal CH	1,111	789	29.6	24.4	629	418	27.2	20.5	1,740	1,207	30.1	22.5
N09 Stomach and Duodenum CH	1,111	789	29.6	24.4	629	418	27.2	20.5	1,740	1,207	30.1	22.5
N10 Pancreatic CH	1,111	789	29.6	24.4	629	418	27.2	20.5	1,740	1,207	30.1	22.5
N11 Liver, Gallbladder and Biliary CH	1,111	789	29.6	24.4	629	418	27.2	20.5	1,740	1,207	30.1	22.5
N12 Lung, Bronchus and Oesophagus CH	1,111	789	29.6	24.4	629	418	27.2	20.5	1,740	1,207	30.1	22.5
N13 Kidney, Bladder and Uterus CH	1,111	789	29.6	24.4	629	418	27.2	20.5	1,740	1,207	30.1	22.5
N14 Thyroid CH	1,111	789	29.6	24.4	629	418	27.2	20.5	1,740	1,207	30.1	22.5
N15 Skin CH	1,111	789	29.6	24.4	629	418	27.2	20.5	1,740	1,207	30.1	22.5
N16 Brain and Nervous CH	1,111	789	29.6	24.4	629	418	27.2	20.5	1,740	1,207	30.1	22.5
N17 Eye CH	1,111	789	29.6	24.4	629	418	27.2	20.5	1,740	1,207	30.1	22.5
N18 Ear, Nose and Throat CH	1,111	789	29.6	24.4	629	418	27.2	20.5	1,740	1,207	30.1	22.5
N19 All other CH	1,111	789	29.6	24.4	629	418	27.2	20.5	1,740	1,207	30.1	22.5
England	17,156	10,559	38.1	37.9	9,724	5,607	31.6	31.6	26,880	17,166	34.6	34.6



Networks above 99.8% control limit:
N01 Yorkshire

Networks above 99.8% control limit:
N02 Greater Manchester and South-Central

Using information to improve quality & choice



Trends in 1 year survival: England 1985-2004

C00-C97 excl. C44: All malignant neoplasms (excl. non-melanoma skin cancer)

Males

Years of diagnosis	Number in Cohort	Cumulative Deaths	% Crude Survival	% Relative Survival	95% Confidence Interval
1985-1989	414,345	221,027	46.7	49.3	49.1 - 49.5
1990-1994	445,012	219,778	50.6	53.6	53.4 - 53.7
1995-1999	468,127	206,001	56.0	58.9	58.7 - 59.0
2000-2004	504,166	196,766	61.0	64.1	63.9 - 64.2

Estimated change per 5-yr cohort (%):	5.0	4.3 - 5.7
P value:	0.001	

Notes on Trend

Estimated 5.0% change per 5 year cohort gives an estimated increase of 1% per annum.

Females

Years of diagnosis	Number in Cohort	Cumulative Deaths	% Crude Survival	% Relative Survival	95% Confidence Interval
1985-1989	423,315	172,317	59.3	61.4	61.3 - 61.6
1990-1994	453,522	172,691	61.9	64.2	64.0 - 64.3
1995-1999	475,530	168,215	64.6	67.0	66.8 - 67.1
2000-2004	498,802	164,881	66.9	69.4	69.3 - 69.5

Estimated change per 5-yr cohort (%):	2.7	2.4 - 2.9
P value:	<0.001	

Notes on Trend

Estimated 2.7% change per 5 year cohort gives an estimated increase of 0.53% per annum.

Persons

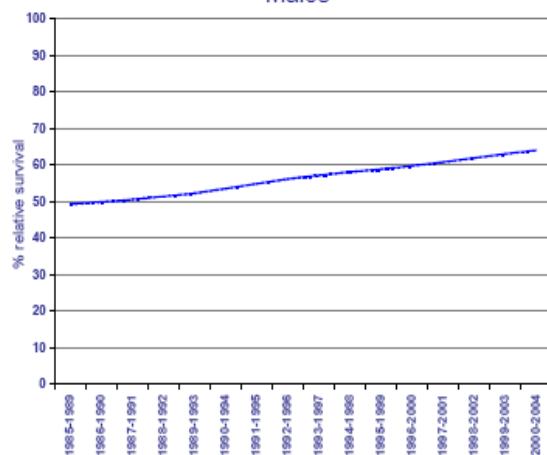
Years of diagnosis	Number in Cohort	Cumulative Deaths	% Crude Survival	% Relative Survival	95% Confidence Interval
1985-1989	837,660	393,344	53.0	55.5	55.4 - 55.6
1990-1994	898,534	392,469	56.3	59.0	58.9 - 59.1
1995-1999	943,657	374,216	60.3	63.0	62.9 - 63.1
2000-2004	1,002,968	361,647	63.9	66.7	66.6 - 66.8

Estimated change per 5-yr cohort (%):	3.8	3.5 - 4.1
P value:	<0.001	

Notes on Trend

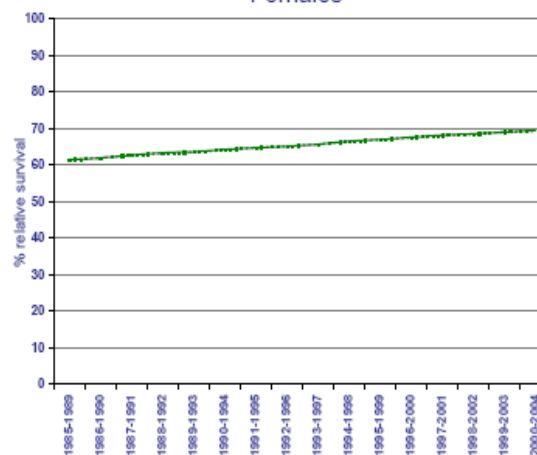
Estimated 3.8% change per 5 year cohort gives an estimated increase of 0.76% per annum.

Males



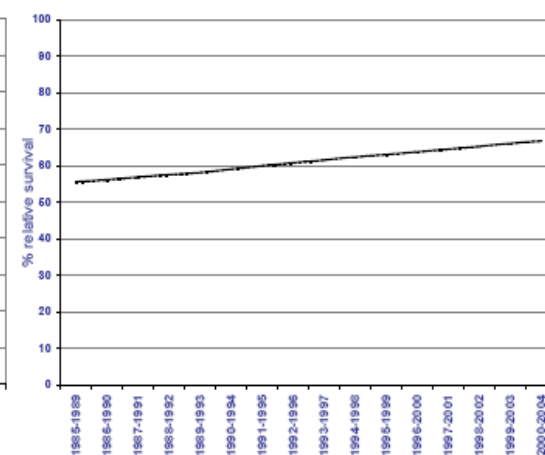
Rolling 5 year cohorts

Females



Rolling 5 year cohorts

Persons

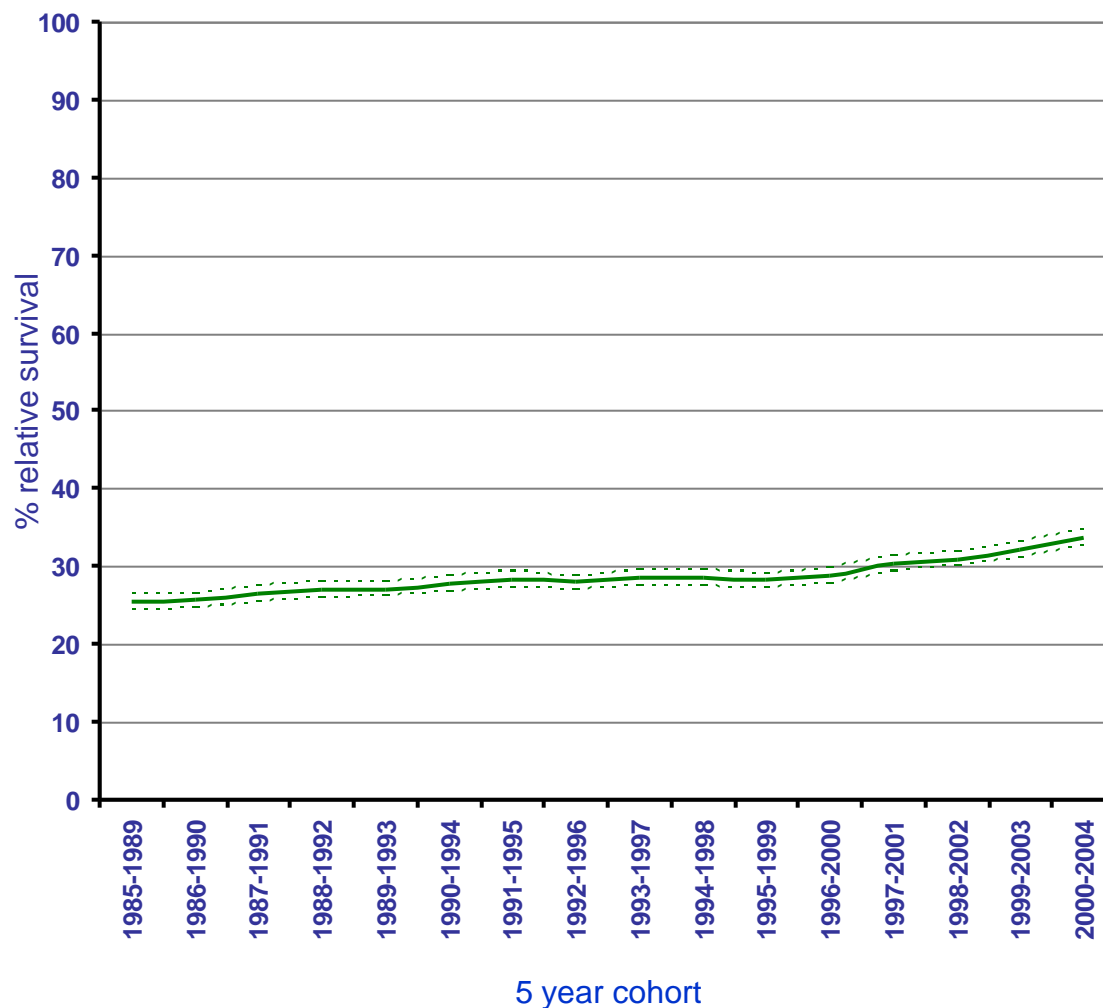


Rolling 5 year cohorts

--- Dotted lines show 95% confidence limits

C15: Oesophagus

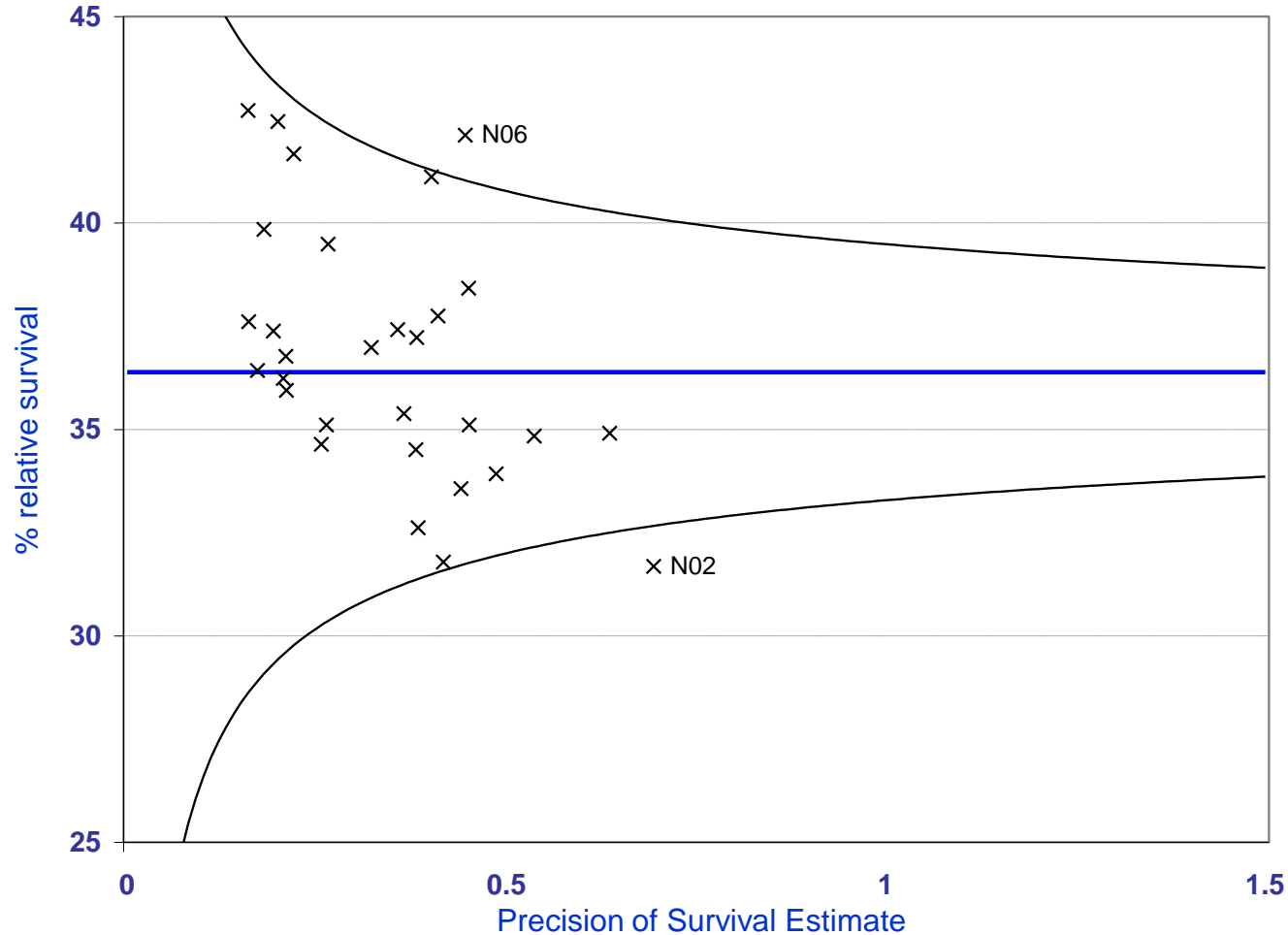
Trends in 1yr survival



5 year cohort

Using information to improve quality & choice

C15: Oesophagus 2005 by Cancer Network



Lung Cancer Incidence by deprivation

Cancer incidence by deprivation quintile, England, 1995 - 2004

C33-C34: Trachea, bronchus and lung

Males

Deprivation Quintile	Number of cases	Crude Rate	ASR	95% Confidence Interval	ASR Ratio	Excess Cases
1995-1999						
Least deprived	12,764	54.9	47.1	46.3 - 47.9	1.0	0
2	17,063	72.6	58.7	57.8 - 59.5	1.2	3,355
3	20,225	86.8	70.1	69.1 - 71.0	1.5	6,623
4	23,793	98.8	87.7	86.6 - 88.8	1.9	11,005
Most deprived	27,443	112.7	110.9	109.6 - 112.2	2.4	15,788
Overall	101,308	85.4	74.1	73.6 - 74.5		
2000-2004						
Least deprived	12,544	51.2	41.3	40.6 - 42.1	1.0	0
2	15,920	65.4	49.6	48.8 - 50.4	1.2	2,647
3	18,625	76.3	59.7	58.8 - 60.5	1.4	5,693
4	21,525	88.3	76.3	75.3 - 77.3	1.8	9,866
Most deprived	24,361	99.2	100.6	99.4 - 101.9	2.4	14,345
Overall	92,965	76.3	63.7	63.3 - 64.1		

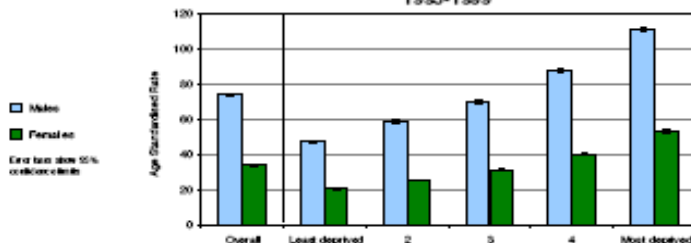
Females

Number of cases	Crude Rate	ASR	95% Confidence Interval	ASR Ratio	Excess Cases
1995-1999					
7,175	29.5	20.8	20.4 - 21.3	1.0	0
9,397	38.1	26.3	24.8 - 26.9	1.2	1,670
11,578	46.5	31.0	30.4 - 31.5	1.5	3,786
14,122	55.9	40.1	39.5 - 40.8	1.9	6,786
16,733	65.2	58.1	57.3 - 58.9	2.5	10,165
59,005	47.3	33.8	33.5 - 34.0		
2000-2004					
7,691	30.7	20.9	20.5 - 21.4	1.0	0
10,290	40.8	26.0	25.5 - 26.5	1.2	2,003
12,140	47.8	31.1	30.5 - 31.7	1.5	3,972
14,719	57.6	40.7	40.0 - 41.3	1.9	7,143
17,024	66.4	55.9	55.0 - 56.7	2.7	10,647
61,894	46.8	34.0	33.9 - 34.3		

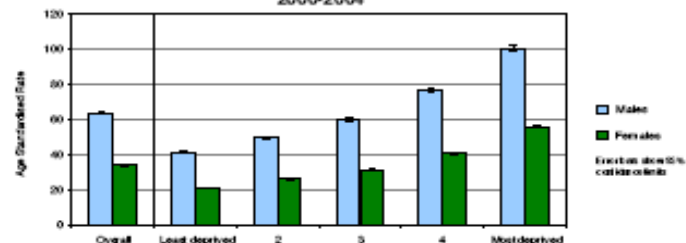
Persons

Number of cases	Crude Rate	ASR	95% Confidence Interval	ASR Ratio	Excess Cases
1995-1999					
19,969	41.9	32.0	31.5 - 32.4	1.0	0
26,460	54.9	39.6	38.1 - 40.0	1.2	5,025
31,803	66.6	47.5	47.0 - 48.0	1.5	10,409
37,915	77.2	60.1	59.5 - 60.7	1.9	17,750
44,176	88.3	77.8	77.1 - 78.6	2.4	25,951
160,313	65.9	50.9	50.7 - 51.2		
2000-2004					
20,295	40.9	29.8	29.4 - 30.3	1.0	0
26,210	52.9	36.3	35.8 - 36.7	1.2	4,660
30,065	61.7	43.3	42.9 - 43.8	1.5	9,066
36,244	72.6	55.8	55.3 - 56.4	1.9	17,008
41,375	82.5	75.2	74.5 - 75.9	2.5	24,993
154,729	62.2	46.9	46.6 - 47.1		

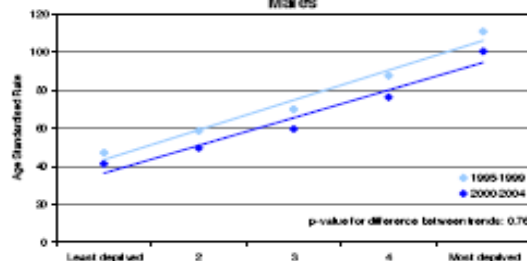
1995-1999



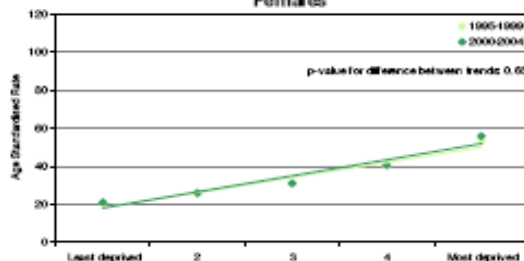
2000-2004



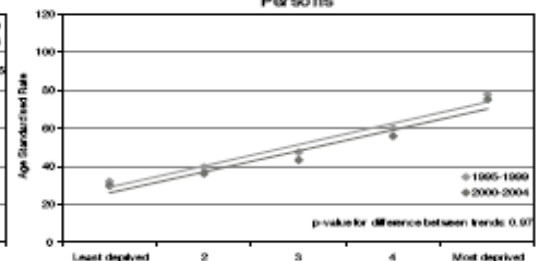
Males



Females



Persons

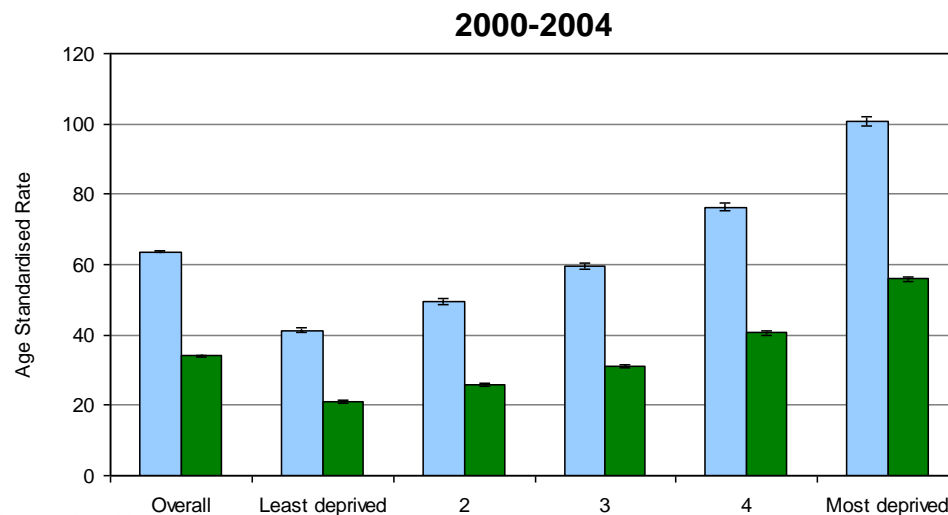
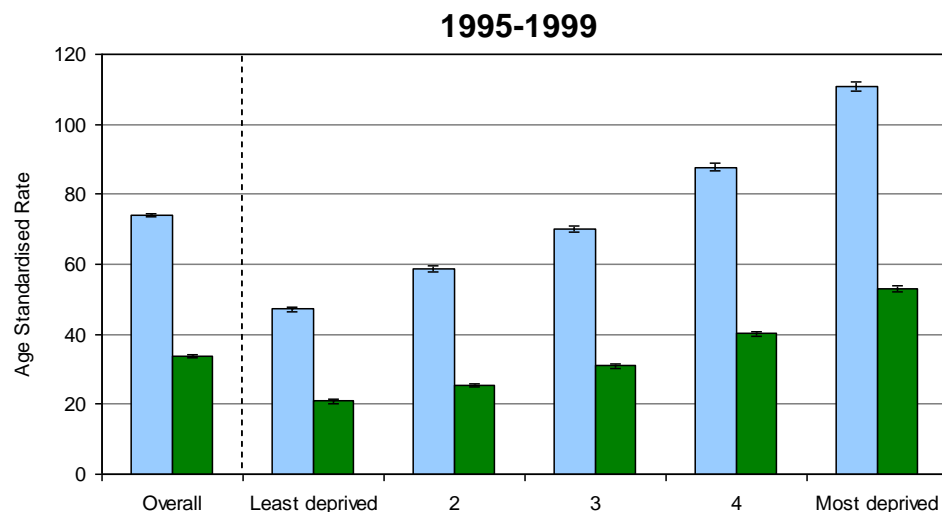


Cohort	Est. Deprivation Gap (Difference in ASR)	95% Confidence Interval	Modelled % Change	P-value for Trend
1995-1999	65.5	49.0 - 86.1	15.0%	0.002
2000-2004	62.4	37.5 - 87.4	18.2%	0.004

Cohort	Est. Deprivation Gap (Difference in ASR)	95% Confidence Interval	Modelled % Change	P-value for Trend
1995-1999	33.8	20.7 - 49.9	19.6%	0.004
2000-2004	36.8	20.3 - 53.3	22.2%	0.008

Cohort	Est. Deprivation Gap (Difference in ASR)	95% Confidence Interval	Modelled % Change	P-value for Trend
1995-1999	47.4	31.1 - 63.7	17.1%	0.003
2000-2004	47.7	27.2 - 68.3	19.6%	0.005

C33-C34: Lung cancer 2000 - 2004 by deprivation



Expert analyses

- Cancer eAtlas: - launched July 2008
www.ncin.org.uk/eatlas
 - Large and varied interest
 - International recognition
- Reports on:
 - UK incidence & mortality
 - One year survival
 - Deprivation
 - Prevalence
 - Ethnicity
 - Surgical treatment rates ('mid' 2010)

- Microsites

Using information to improve quality & choice

Detailed “Microsites”

Back

1 of 1 100% Find | Next Select a format Export

Major LGIT Surgical Procedures: Any Diagnosis Procedures by Network of Trust and Consultant (Provider Based Analysis)

HES Cancer Data Extract 9 (1997/08 - 2006/07)

		1997-1998	1998-1999	1999-2000	2000-2001	2001-2002	2002-2003	2003-2004	2004-2005	2005-2006	2006-2007	Grand Total
East Kent Hospitals NHS Trust	Colectomy	162	178	163	174	158	144	145	148	142	139	1,553
	Excision of Rectum	98	137	106	117	84	136	121	142	123	146	1,210
	Trust Total	260	315	269	291	242	280	266	290	265	285	2,763
Maidstone and Tunbridge Wells NHS Trust	Colectomy	83	101	100	98	89	99	96	79	107	111	963
	Excision of Rectum	59	99	71	77	63	72	72	72	72	86	743
	Trust Total	142	200	171	175	152	171	168	151	179	197	1,706
Medway NHS Foundation Trust	Colectomy	49	63	50	71	63	66	74	67	59	48	610
	Excision of Rectum	49	48	49	39	49	52	49	60	63	63	521
	Trust Total	98	111	99	110	112	118	123	127	122	111	1,131
Dartford and Gravesham NHS Trust	Colectomy	33	42	42	49	47	43	52	46	47	48	449
	Excision of Rectum	37	16	24	37	36	27	35	38	41	49	340
	Trust Total	70	58	66	86	83	70	87	84	88	97	789
Grand Total		570	684	605	662	589	639	644	652	654	690	6,389

..with detailed “drill through”

Back

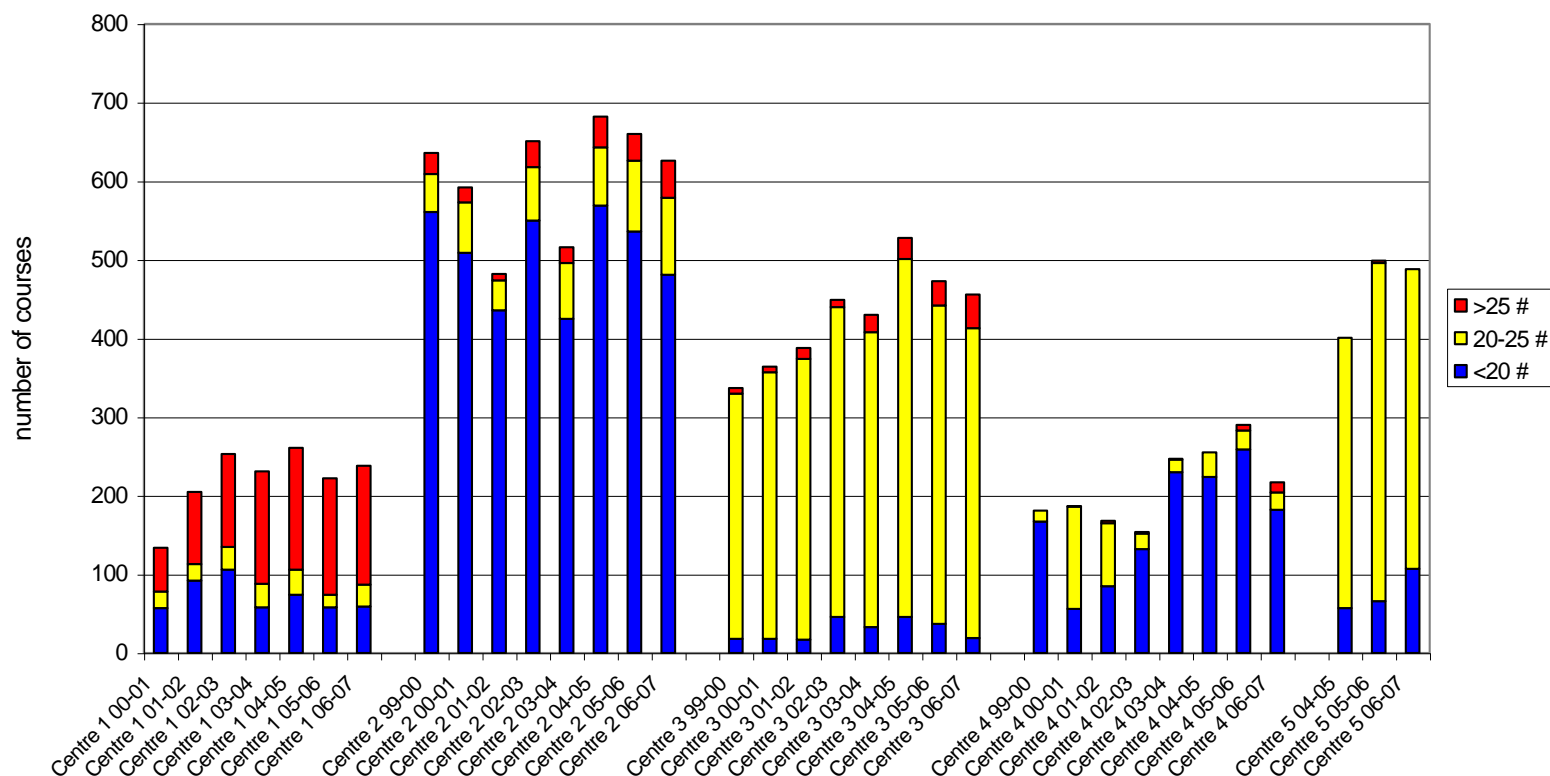
Major LGIT Surgical Procedures: Any Diagnosis Procedures by Network of Trust and Consultant (Provider Based Analysis)

HES Cancer Data Extract 9 (1997/08 - 2006/07)

			1997-1998	1998-1999	1999-2000	2000-2001	2001-2002	2002-2003	2003-2004	2004-2005	2005-2006	2006-2007	Grand Total
East Kent Hospitals NHS Trust	Colectomy		162	178	163	174	158	144	145	148	142	139	1,553
	Excision of Rectum		98	137	106	117	84	136	121	142	123	146	1,210
	Trust Total		260	315	269	291	242	280	266	290	265	285	2,763
Maidstone and Tunbridge Wells NHS Trust	Colectomy	C14.0	37	28	37	30	34	32	40	33	57	50	378
		C14.1	10	23	15	23	22	19	14	11	20	22	179
		C14.2	10	8	10	17	10	18	21	8	15	9	126
		C14.3	12	13	13	7	4	7	5	3	2		66
		C14.4	8	13	8	5	7	9	3	8	2		63
		C14.5	4	11	9	3	6	4	5	4	3	3	52
		C14.6		3	7	10	2	2	2		2		28
		C14.7					3	7	4	8	3		25
		C14.8										21	21
		C14.9	2	2	1	3	1	1	2	4		1	17
		C14.10									3	2	5
		C14.11										1	1
		C14.12										1	1
		C14.13										1	1
		C14.14										1	1
	Excision of Rectum		59	99	71	77	63	72	72	72	72	86	743
	Trust Total		142	200	171	175	152	171	168	151	179	197	1,706
Medway NHS Foundation Trust	Colectomy		49	63	50	71	63	66	74	67	59	48	610
	Excision of Rectum		49	48	49	39	49	52	49	60	63	63	521
	Trust Total		98	111	99	110	112	118	123	127	122	111	1,131

Links with treatment data

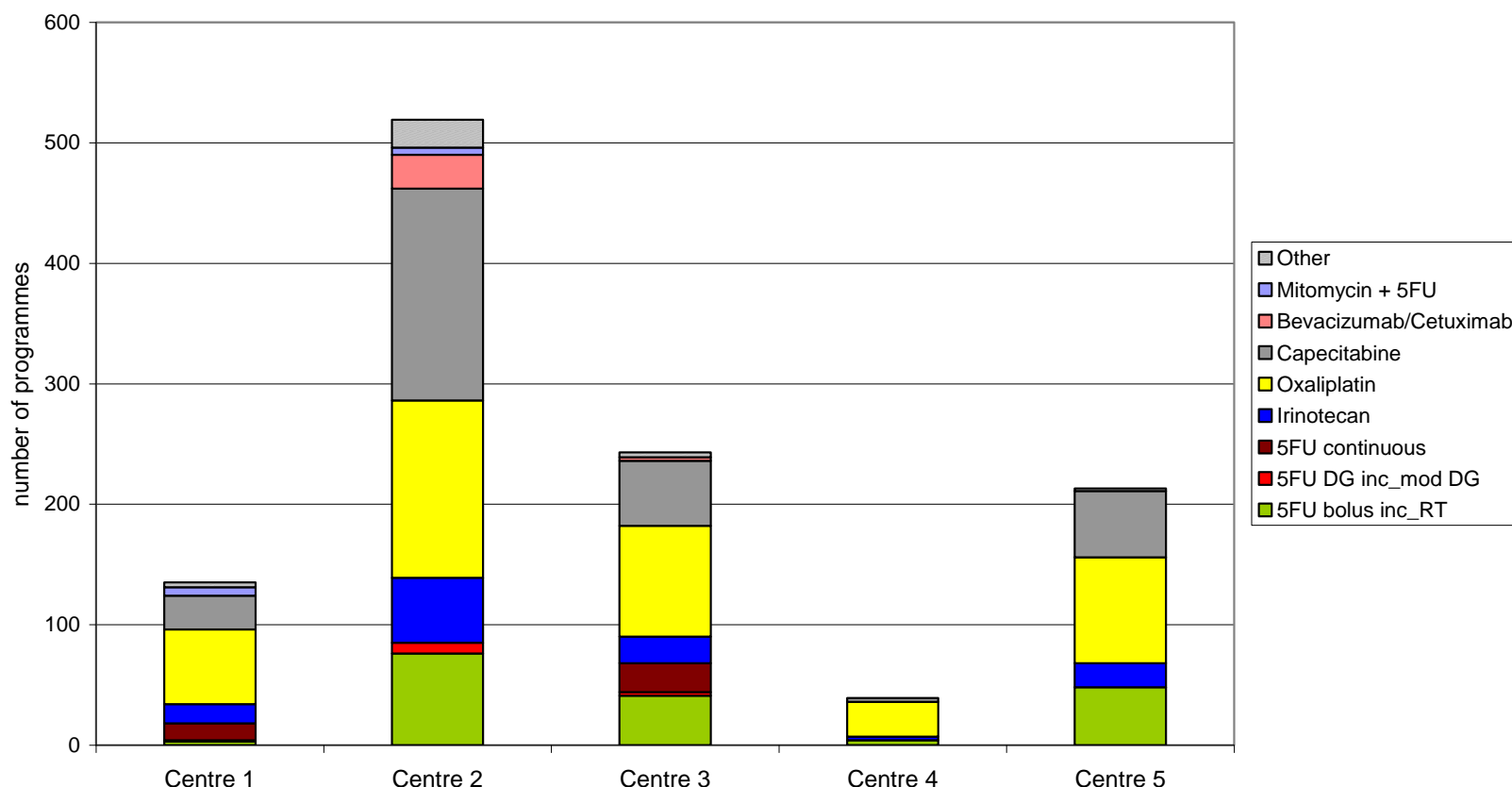
Trends in breast cancer radical radiotherapy
(courses divided into fraction groups)



Source: Monica Roche: Oxford Cancer Intelligence Unit

Links with treatment data

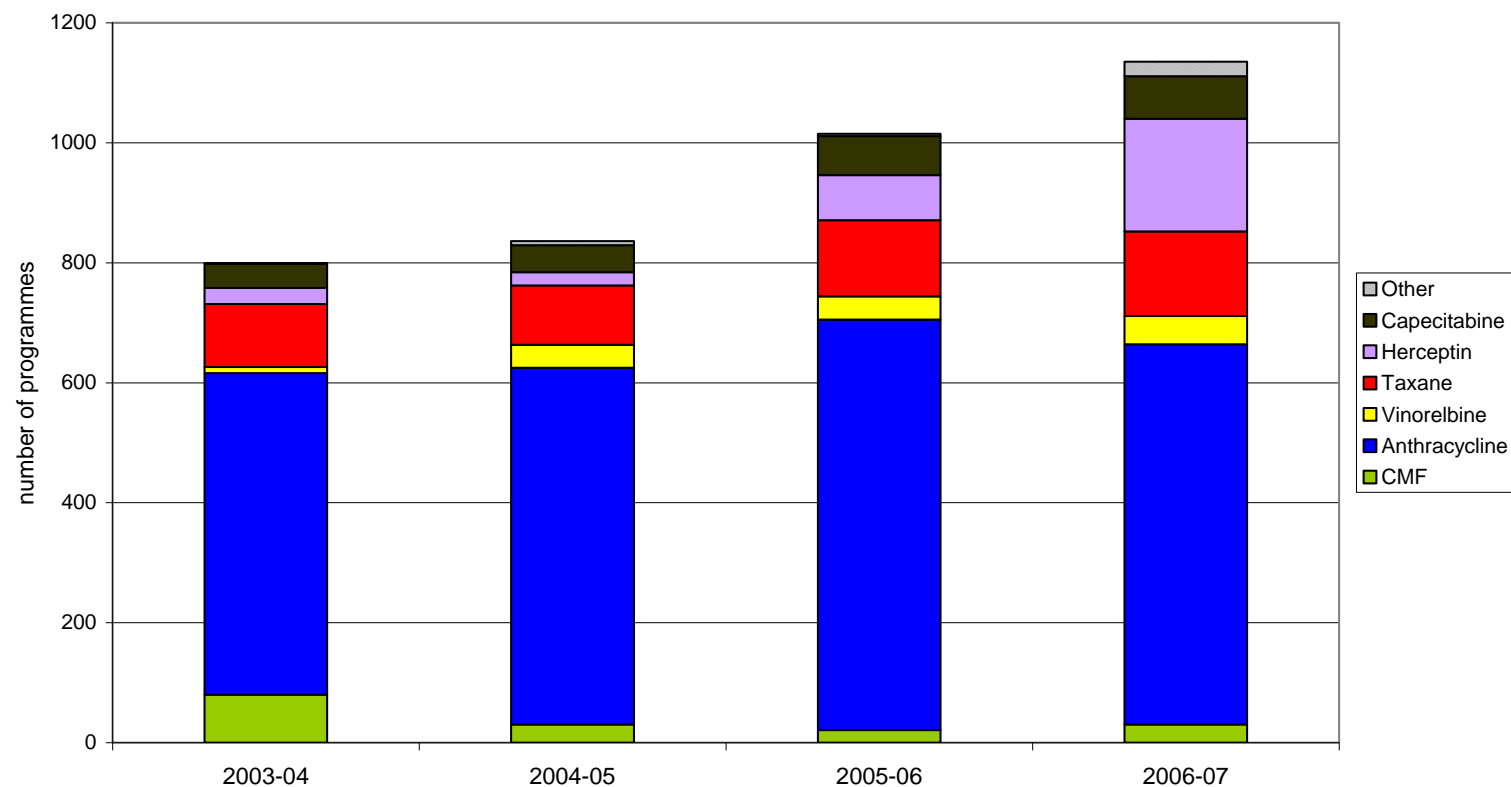
Colorectal cancer chemotherapy by regimen by centre 2006-07



Source: Monica Roche: Oxford Cancer Intelligence Unit

Links with treatment data

Breast cancer chemotherapy trends



Source: Monica Roche: Oxford Cancer Intelligence Unit

Scientific Advisory Group



- Agree analytical methodologies – including the identification of outliers
- To review the ‘scientific’ content of NCIN reports
- To advise on the commissioning of methodological research
- To advise on Peer Review of analytical and research proposals put to the NCIN
- To liaise with the UKACR and other analytical bodies to, common approaches to the analysis and reporting of results

Drivers for change

- Cancer Peer Review (*'Clinical Lines of Enquiry'*)
- CQC 'Annual Health Check'
- Peer pressure
- Voluntary sector pressure
- Cancer Reform Strategy
- DH 'Quality agenda' (*Quality Accounts*)
- Commissioning
- National Guidelines
- Patient choice

Drivers for change

- Cancer Peer Review
- CQC 'Annual Health Check'
- Peer pressure
- Voluntary sector pressure
- Cancer Reform Strategy
- DH 'Quality agenda'
- Commissioning
- National Guidelines
- Patient choice

+ Data

**Clinical
Outcomes Group**

Clinical Outcomes Group:

Main purposes



- To provide a strategic link between the NCIN & the National Cancer Action Team
- To oversee & support the development of Peer Review
- To link between those producing data and those responsible for improving the quality of care
- To identify what data is required to support the strategic development of cancer services
- To support 'intelligent commissioning'
- To promote the use of outcome data in service improvement
- To support the implementation of NICE guidance
- To support the development of care pathways

Using information to improve quality & choice

Clinical Outcomes Group: Members



- NCIN
- National Cancer Action Team
- Peer Review Team
- DH Cancer Policy Team
- DH Quality Team
- SHA rep
- Specialist commissioner
- Network Director
- NHS Improvement
- NHS Information Centre
- NICE
- CQC

Using information to improve quality & choice

NCIN

national cancer
intelligence network



Using information to improve quality & choice

www.ncin.org.uk