

What is the NCIN?

November 2009

Improving Outcomes Guidance

2003

- “No reliable figures for incidence and survival rates for haematological cancer in England and Wales”
- “Many cases are never reported to cancer registries”

“Quite simply, we want to have the
best cancer information service
in the world by 2012”

Mike Richards
Britain against Cancer
Dec 2007

“The best cancer information service in the world”



- Build on current strengths of UK cancer registry system
- Collection of defined datasets on all cancer patients to be mandated through the national model contract. PCTs will be responsible for ensuring that this information is collected by MDTs and sent to cancer registries
- A new **National Cancer Intelligence Network** is being established to bring together relevant stakeholders and to act as a repository of cancer data.

Cancer Reform Strategy 2007

Using information to improve quality & choice

NCIN Core Objectives



1. Promoting efficient and effective data collection throughout the cancer journey
2. Providing a common national repository for cancer datasets
3. Producing expert analyses, based on robust methodologies, to monitor patterns of cancer care
4. Exploiting information to drive improvements in standards of cancer care and clinical outcomes
5. Enabling use of cancer information to support audit and research programmes

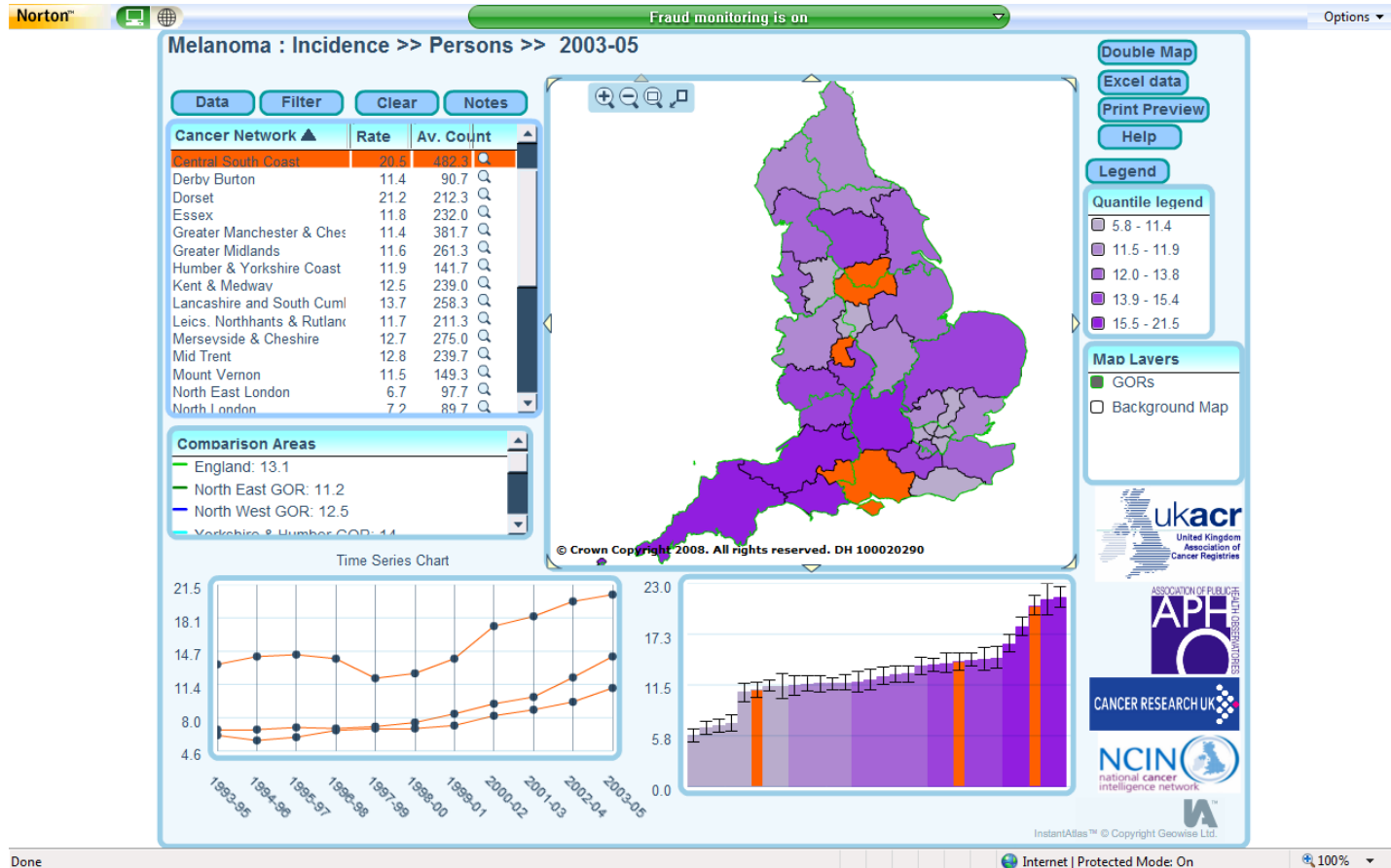
Using information to improve quality & choice



How are we doing this?

- Establishment of 12 site specific clinical reference groups to advise and progress key work streams
 - Improving completeness of registration
 - Site specific datasets
 - Data analysis priorities
- Development of national data repository
 - Cancer registry data, HES data, cancer waits
- Undertaking expert analyses – eg Cancer E Atlas

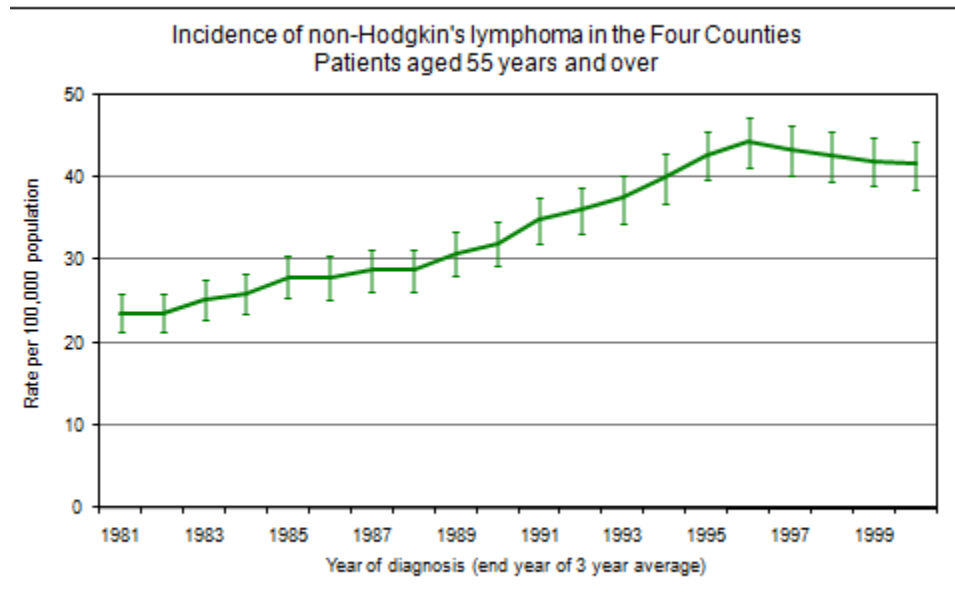
National Cancer e-Atlas



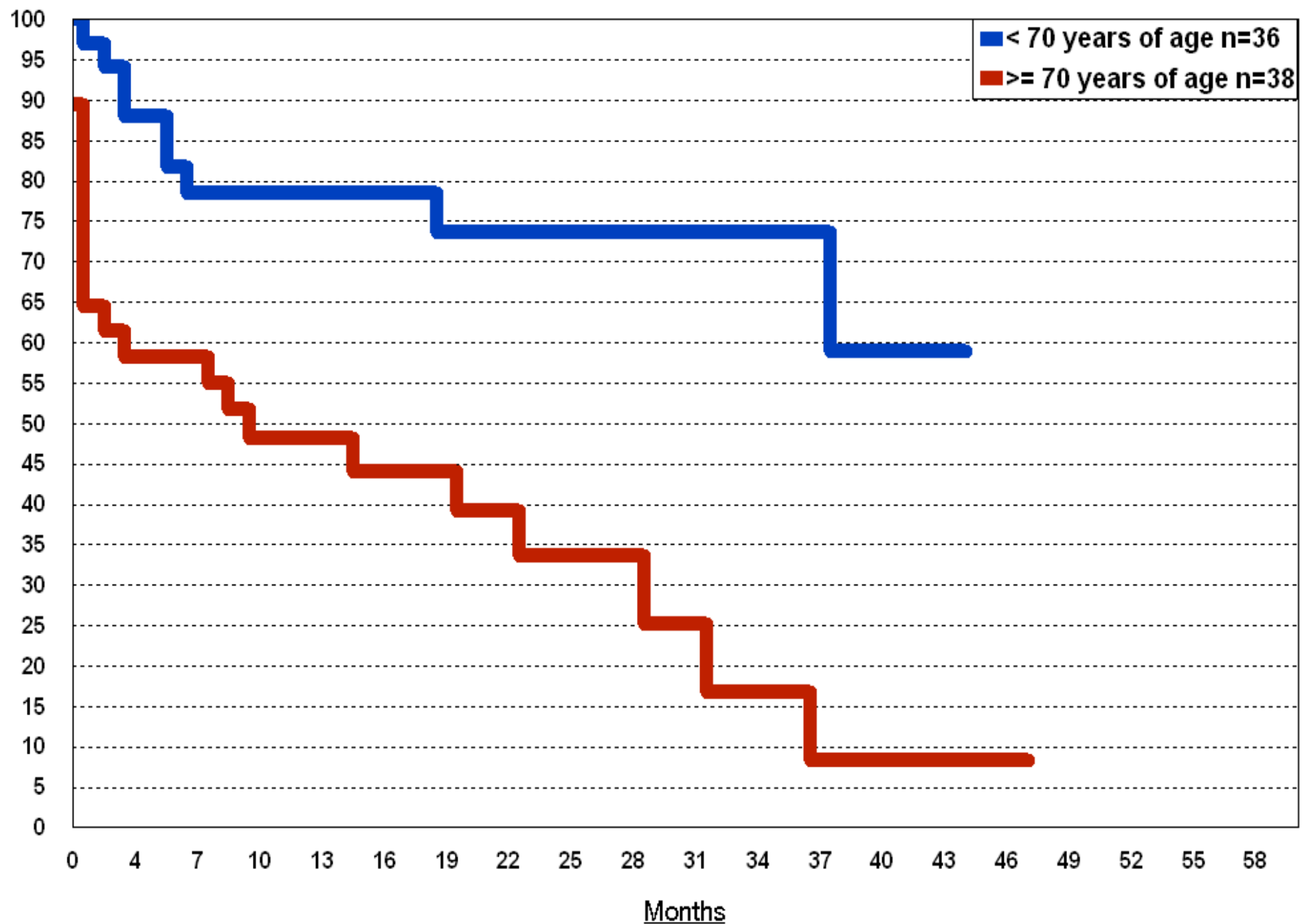
Summary...

Future perspectives:

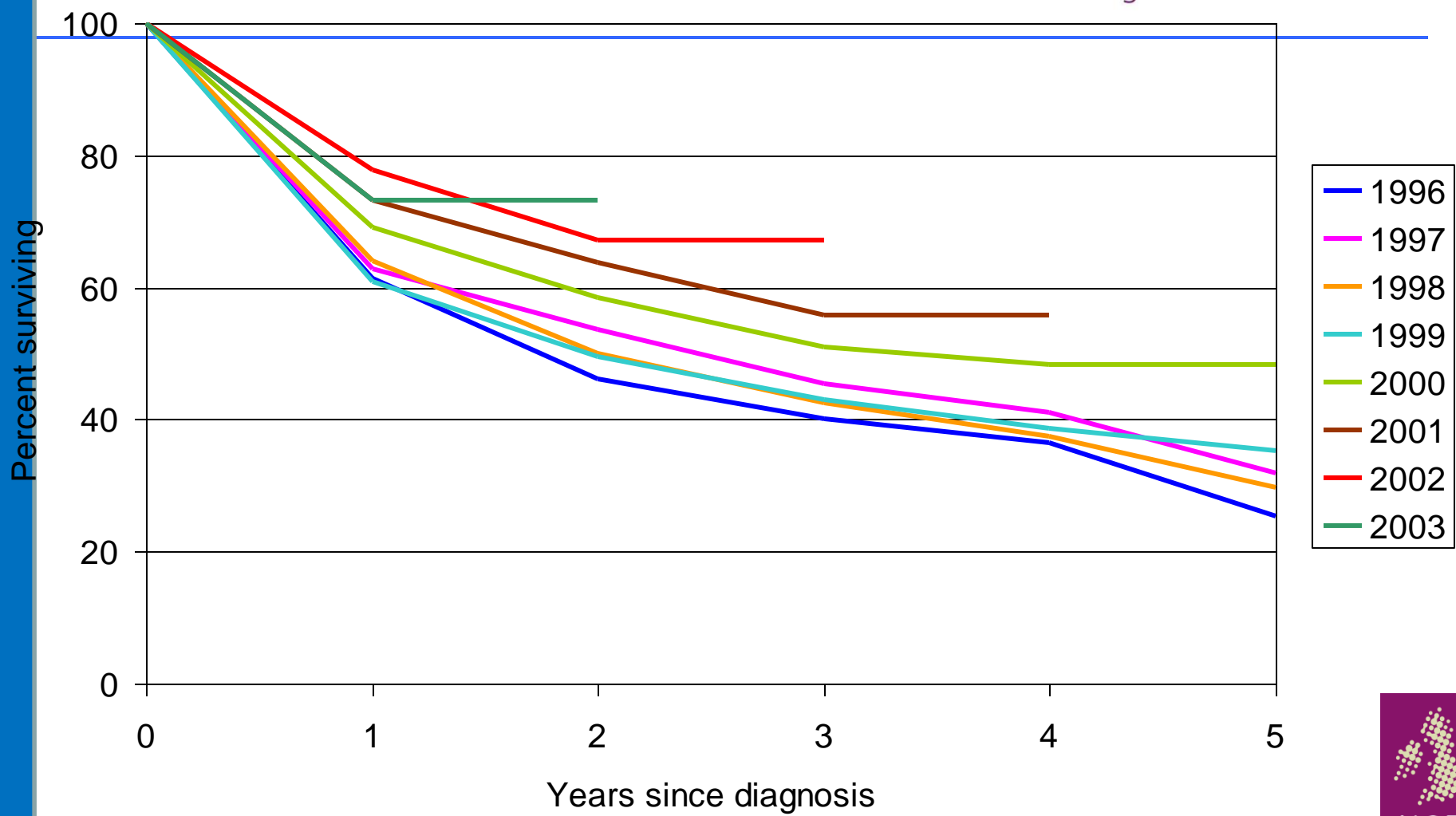
- Massive potential of data linkages:
 - Service: clinical, primary care, end of life
 - Research: genetic, trials, informatics
- Scope to transform information landscape
 - New linked datasets as research tools
 - Clinical care and outcomes properly monitored for service improvement and patient benefit



Myeloma



Chronic Myeloid Leukaemia in South East England
 Relative survival for patients diagnosed in 1996-2003



1 Year Survival Worst ?

Leukaemia

- **Lancashire South Cumbria**
- **Mersey Cheshire**
- **North Trent**
- **LNR**
- **Mount Vernon**
- **Essex**

1 Year Survival Best?

NHL

- **Central South Coast**

Leukaemia

- **Yorkshire**
- **Humber Yorkshire Coast**
- **South West London**
- **Thames Valley**