

# **Principal Treatment Centres**

## **What do the data say for childhood cancer?**

**Charles Stiller**

**National Registry of Childhood Tumours (NRCT)**  
**Childhood Cancer Research Group (CCRG)**  
**Children's Cancer and Leukaemia Group (CCLG)**

**NCIN TYA Workshop**  
**24 November 2010**

# **PTCs for Paediatric Oncology in UK & Ireland affiliated to CCLG**

## **Annual Registrations of Children 2005-2009**

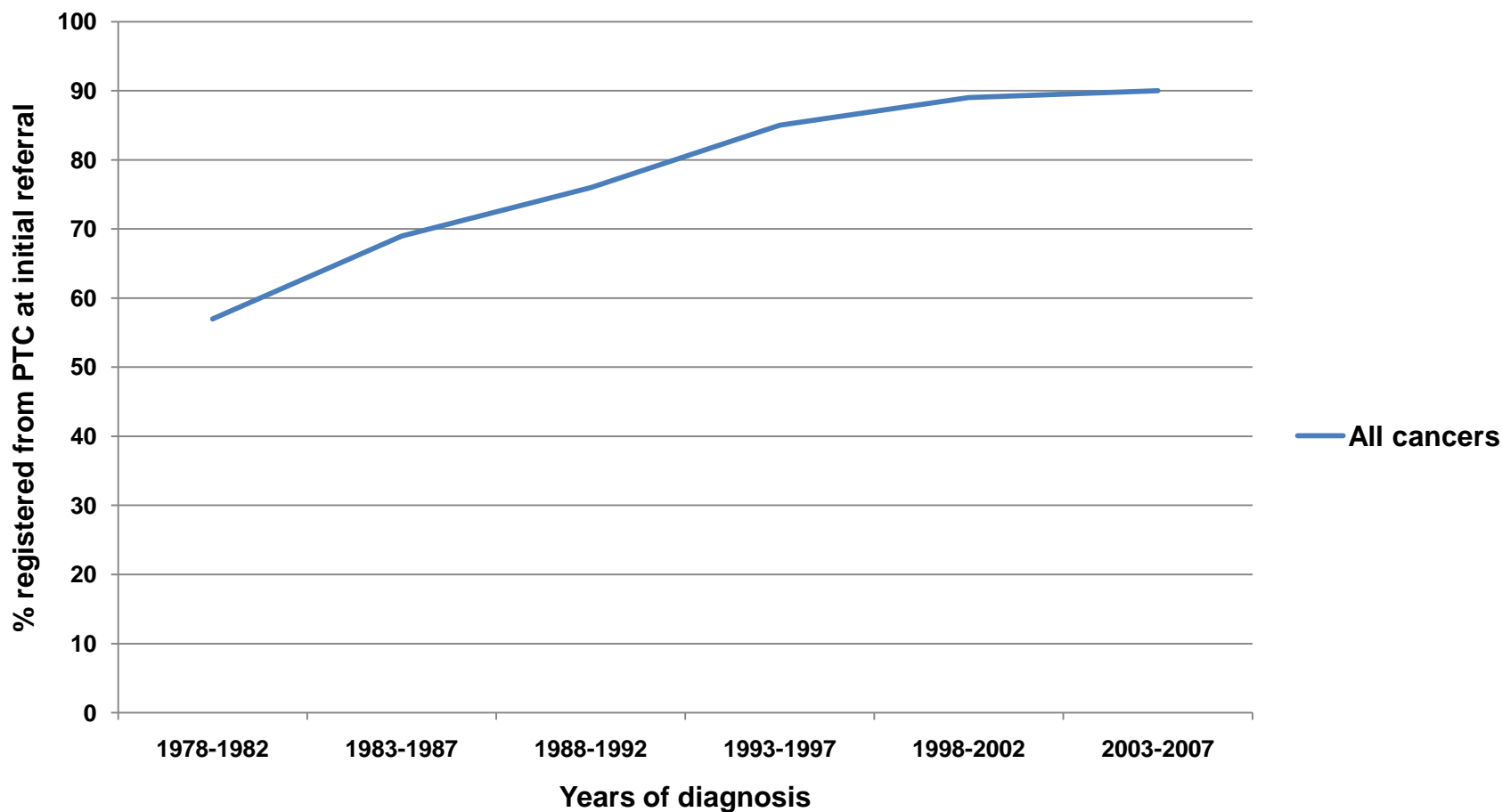
<b>Country</b>	<b>Centres</b>	<b>Cancers</b>	<b>All Diagnoses</b>
<b>Total</b>	<b>20</b>	<b>1551</b>	<b>1727</b>
<b>UK</b>	<b>19</b>	<b>1438</b>	<b>1605</b>
<b>England</b>	<b>14</b>	<b>1237</b>	<b>1383</b>
<b>Scotland</b>	<b>3</b>	<b>111</b>	<b>126</b>
<b>Wales</b>	<b>1</b>	<b>56</b>	<b>62</b>
<b>N Ireland</b>	<b>1</b>	<b>34</b>	<b>35</b>
<b>Irish Republic</b>	<b>1</b>	<b>112</b>	<b>121</b>

# PTCs for Paediatric Oncology in England

## Annual Registrations of Children 2005-2009

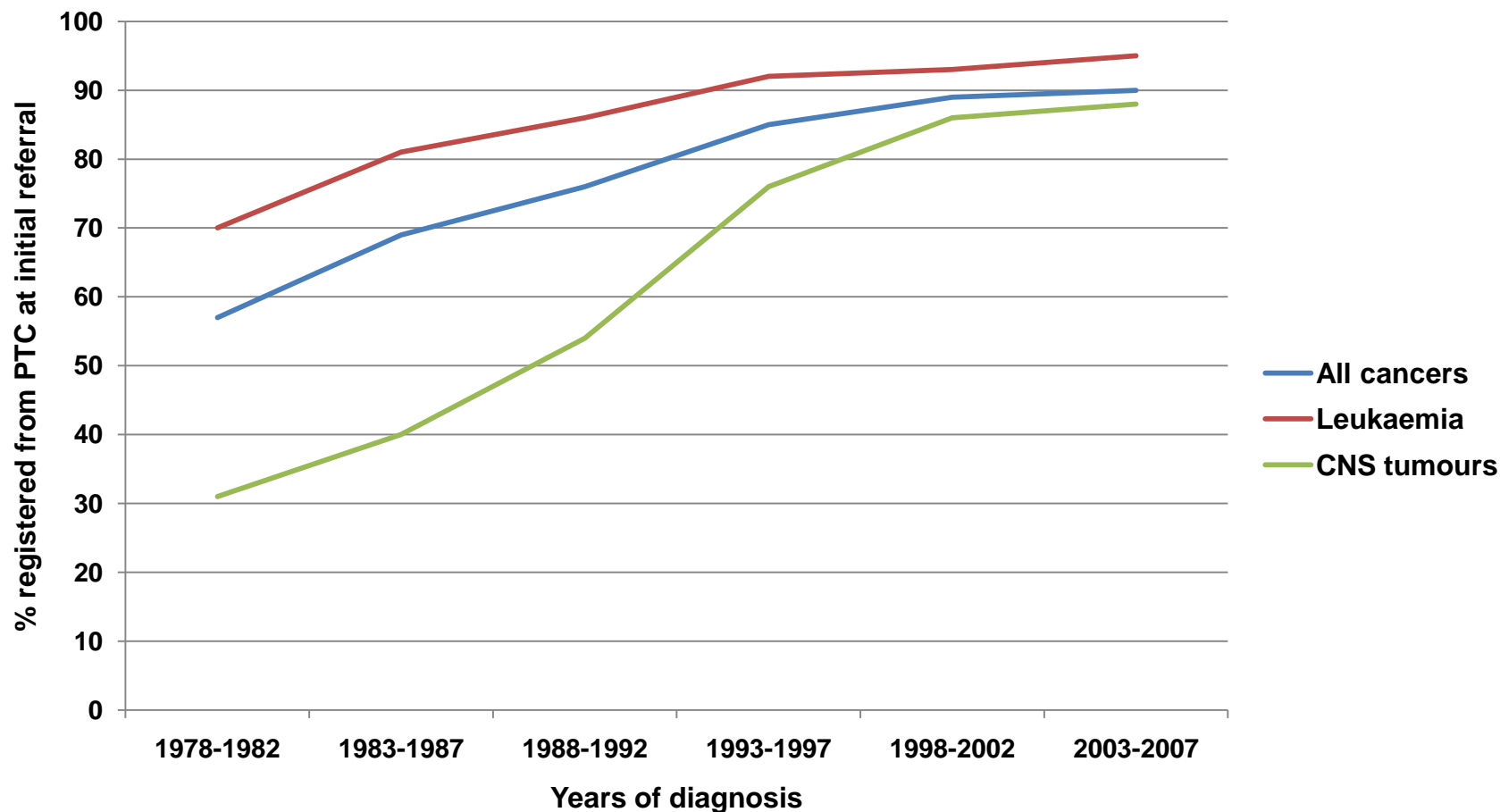
Centre	Cancers	All Diagnoses
Birmingham	147	164
Bristol	91	101
Cambridge	87	104
E Midlands (Nottingham/Leicester)	81	88
Leeds	79	89
Liverpool	73	84
London – Great Ormond Street	169	196
London – UCLH	37	39
London – Royal Marsden	123	130
Manchester	98	112
Newcastle	72	79
Oxford	62	68
Sheffield	51	58
Southampton	64	70

# Percentage of Childhood Cancers Registered from CCLG (UKCCSG) PTC at Initial Referral Great Britain, 1978-2007

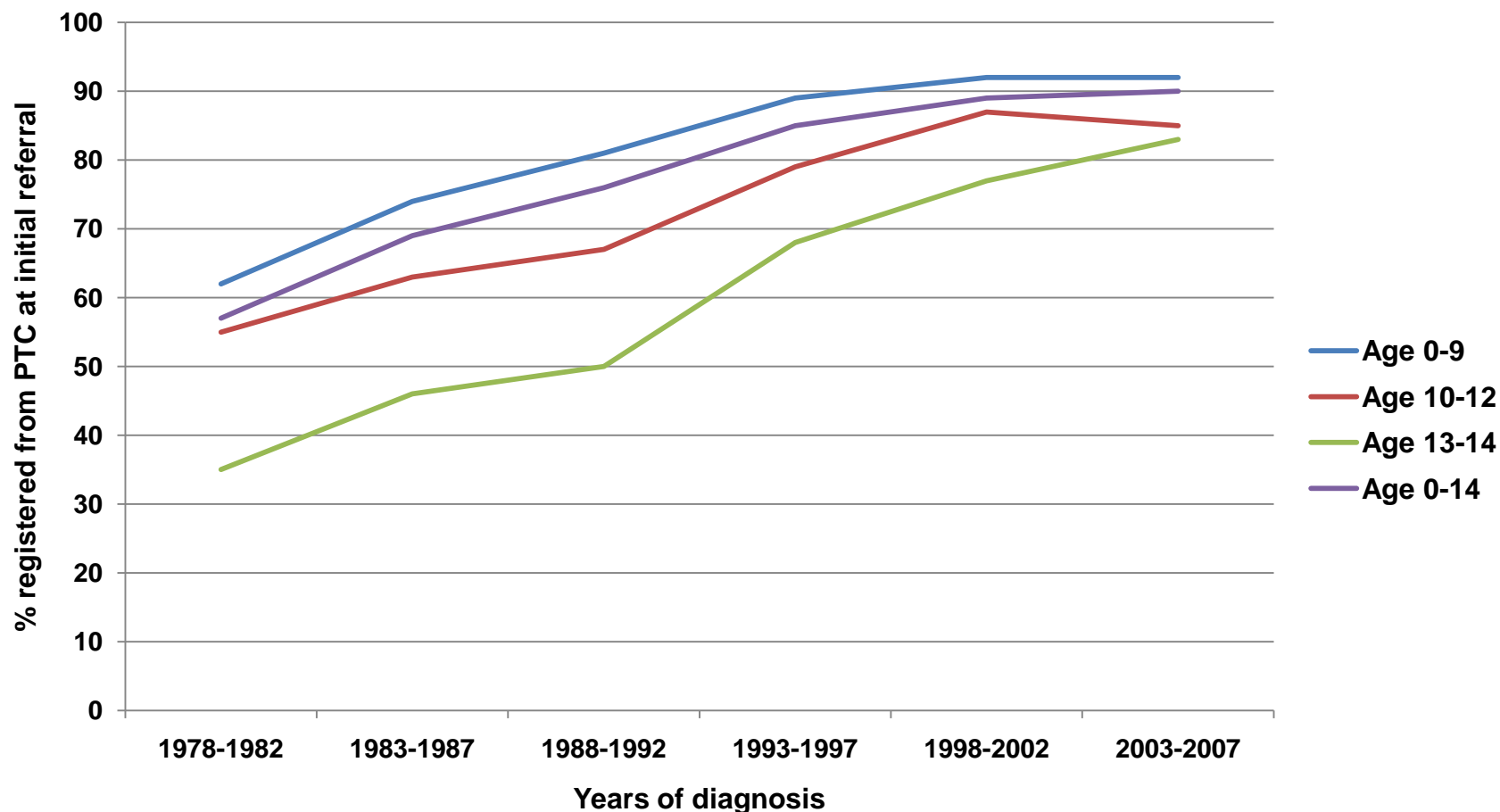


# Percentage of Childhood Cancers Registered from CCLG (UKCCSG) PTC at Initial Referral

## Great Britain, 1978-2007



# Percentage of Childhood Cancers Registered from CCLG (UKCCSG) PTC at Initial Referral Great Britain, 1978-2007



# Paediatric Oncology PTC by Cancer Network of Residence, England, 2005-2009

## All diagnoses except retinoblastoma

Cancer Network	PTC	
Merseyside & Cheshire	Liverpool	99%
Peninsula (Devon & Cornwall)	Bristol	99%
Pan Birmingham	Birmingham	98%
North of England	Newcastle	97%
Yorkshire	Leeds	97%
Norfolk & Waveney	Cambridge	97%
Dorset	Southampton	96%
North Trent	Sheffield	95%
Central South Coast	Southampton	95%

# Paediatric Oncology PTC by Cancer Network of Residence, England, 2005-2009

All diagnoses except retinoblastoma

Cancer Network	PTC		PTC		PTC	
Arden (Warwickshire)	Birmingham	93%				
Thames Valley	Oxford	91%				
Greater Manchester & Cheshire	Manchester	91%	Liverpool	8%		
Lancashire & S Cumbria	Manchester	91%	Liverpool	7%		
Greater Midlands	Birmingham	90%	E Midlands	6%		
Mid Trent	E Midlands	88%	Sheffield	6%	Cambridge	5%
Avon, Somerset & Wiltshire	Bristol	86%	Oxford	12%		



# Paediatric Oncology PTC by Cancer Network of Residence, England, 2005-2009

All diagnoses except retinoblastoma

Cancer Network	PTC		PTC		PTC	
N E London	GOSH	84%	UCLH	14%		
West Anglia	Cambridge	84%	GOSH	11%		
Derby-Burton	E Midlands	83%	Birmingham	16%		
N London	GOSH	83%	UCLH	14%		
Sussex	R Marsden	81%	GOSH	15%		
W London	GOSH	81%	UCLH	14%		
Surrey, W Sussex & Hampshire	R Marsden	78%	GOSH	17%	Cambridge	5%
Humberside & Yorkshire Coast	Leeds	75%	Sheffield	24%		
S W London	R Marsden	72%	GOSH	24%		

# Paediatric Oncology PTC by Cancer Network of Residence, England, 2005-2009

All diagnoses except retinoblastoma

Cancer Network	PTC		PTC		PTC	
Leicestershire, Northants & Rutland	E Midlands	70%	Birmingham	23%	Oxford	5%
S Essex	GOSH	69%	UCLH	23%		
Mid Anglia	Cambridge	66%	GOSH	25%	UCLH	6%
Kent & Medway	R Marsden	62%	GOSH	25%	UCLH	11%
Three Counties (Herefs, Worcs, Gloucs)	Bristol	54%	Birmingham	40%		
S E London	R Marsden	51%	GOSH	40%	UCLH	8%
Mount Vernon (Beds & Herts)	GOSH	49%	Cambridge	38%	UCLH	10%

## **Other Classes of PTC for Specific Diseases or Treatments**

- Ophthalmological Treatment Centres for Retinoblastoma
- Liver Disease Centres for Liver Tumour Surgery
- Bone Tumour Centres for Bone Sarcomas
- Paediatric Neurosurgical Centres for CNS Tumours

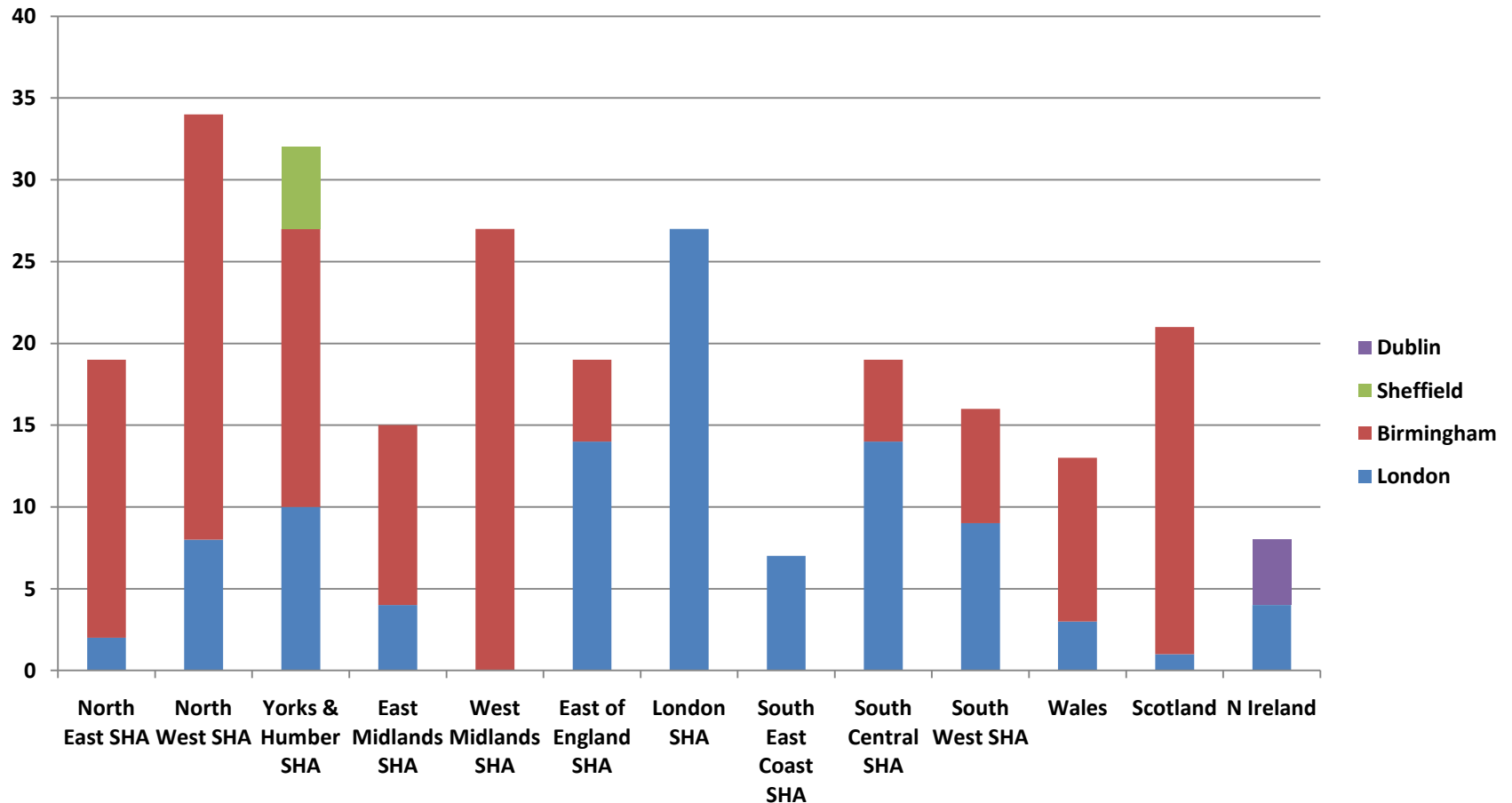
# **Ophthalmological Treatment Centres for Retinoblastoma**

Two centres, both in England

- London – GOSH  
(formerly RLH/SBH/Moorfields)
- Birmingham

# Retinoblastoma, UK, 2002-2007

## Ophthalmological Treatment Centre by SHA (England) and Country



# **Liver Disease Centres**

Three centres, all in England

- London – King's College Hospital
- Birmingham
- Leeds

# **Bone Tumour Centres**

Two centres in England

- London – UCLH & RNOH
- Birmingham

# Paediatric Neurosurgical Centres

England (N=14)	Scotland (N=3)	Wales (N=1)	N Ireland (N=1)
Birmingham	Aberdeen	Cardiff	Belfast
Bristol	Edinburgh		
Cambridge	Glasgow		
Leeds			
Liverpool			
London – GOSH			
London – King's			
London – St George's			
Manchester			
Newcastle			
Nottingham			
Oxford			
Sheffield			
Southampton			



# **Analyses of Survival by CCLG PTC**

- Previously undertaken for CCLG Clinical Research Governance Group
- Will be undertaken in future for Children's Cancer and Leukaemia Network

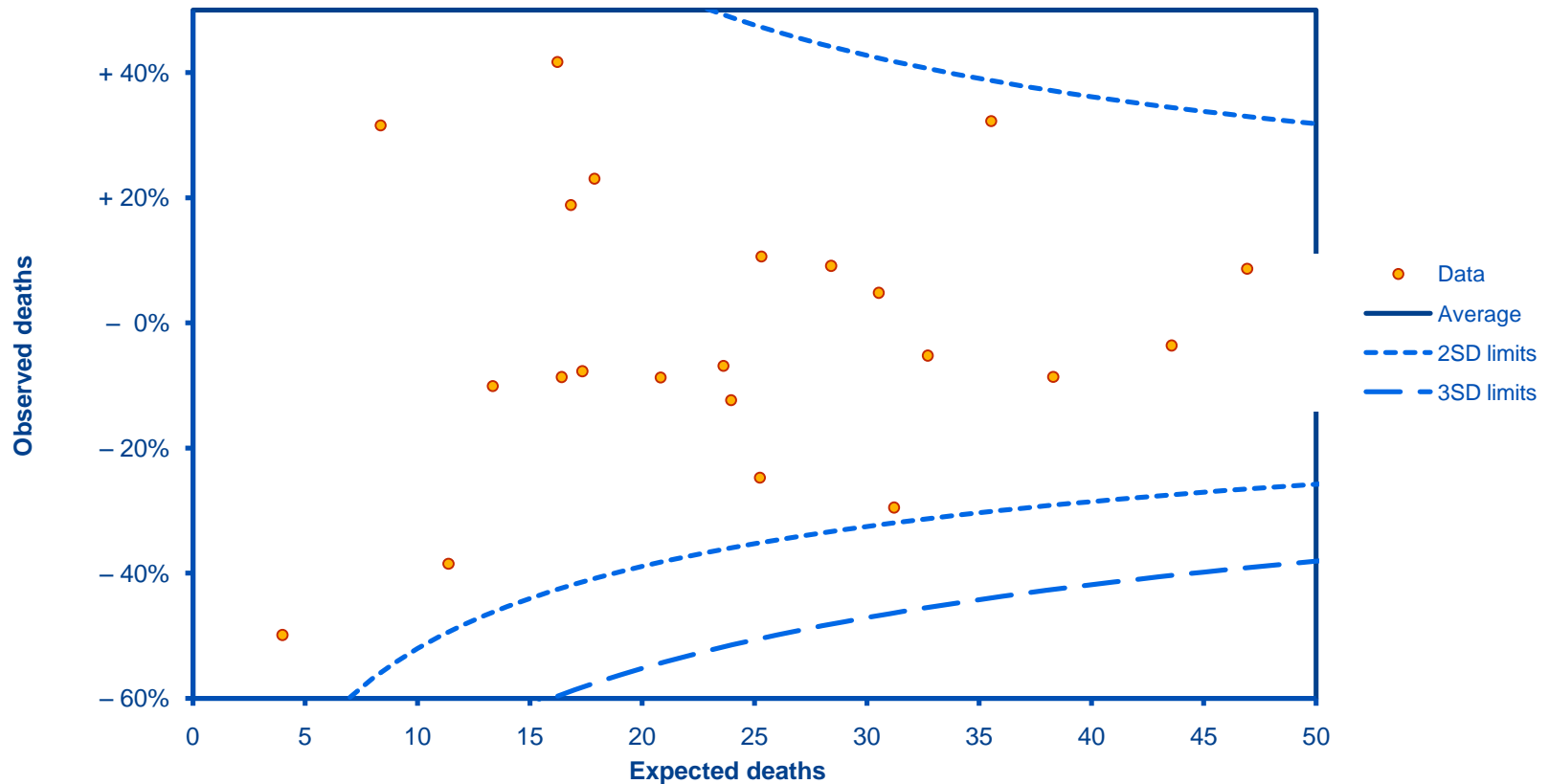
# Acute Lymphoblastic Leukaemia

## UK and Ireland 1998-2007

### Survival by CCLG PTC (N=22)

allowing for age at diagnosis (<1, 1-14)

ALL age 0-14 1998-2007



Source: CCLG Registry data

# Early Mortality of Children with CNS Tumours in the UK

Collaboration with Mr Paul Chumas, Consultant Paediatric Neurosurgeon, Leeds

Histologically verified CNS tumours in children aged <15 years at diagnosis, 2004-2007, who had resection or biopsy

Exclusions:

- PM diagnosis
- CSF diagnosis
- Optic nerve glioma

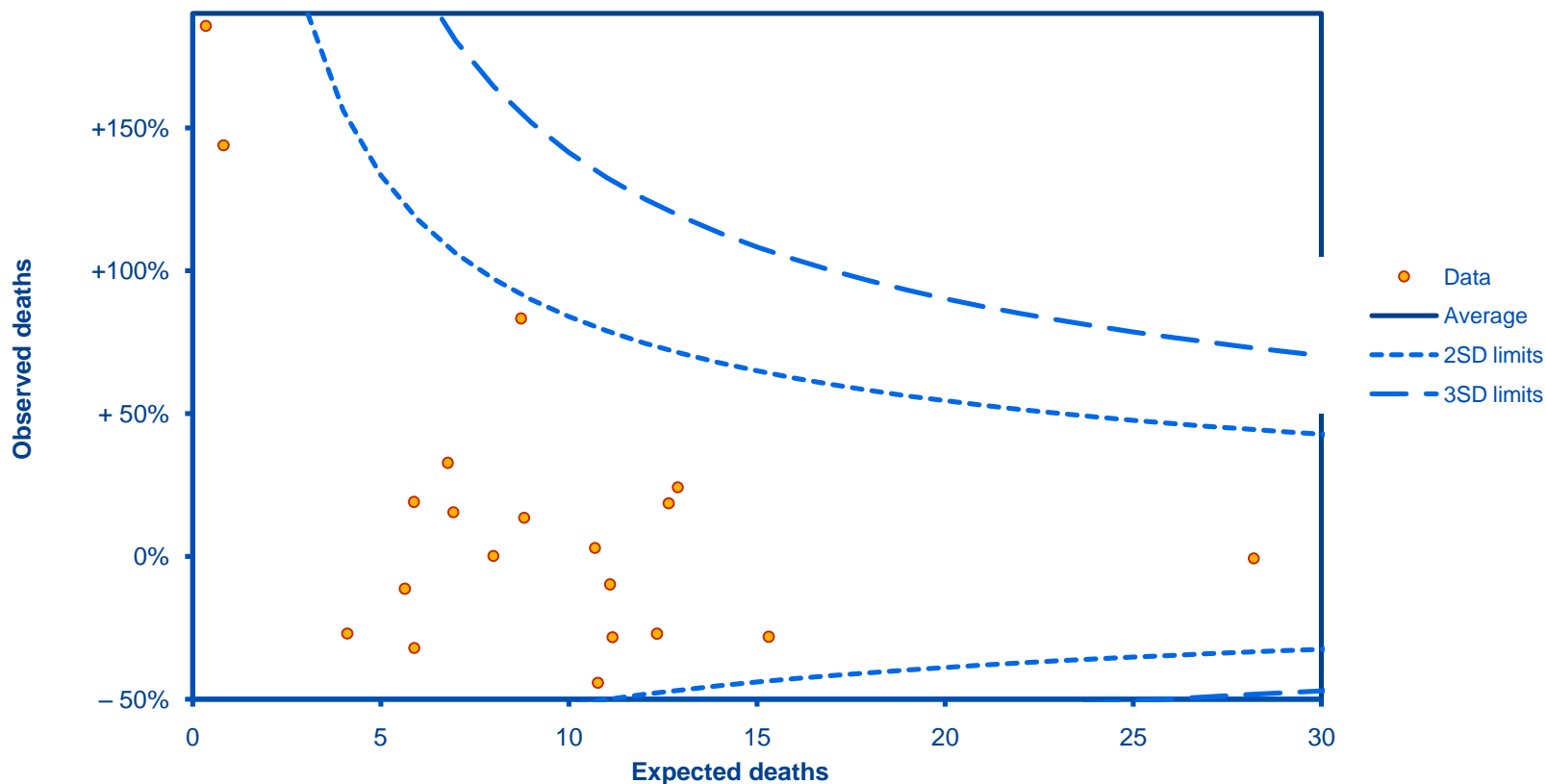
Initial analyses: 30-day and 1-year mortality

- By tumour type
- By neurosurgical centre

# Childhood CNS Tumours in the UK 2004-2007

## One-year mortality by neurosurgical centre (N=20) allowing for age at diagnosis (0-1, 2-14)

CNS tumour 1-year mortality allowing for age, 2004-2007



Source: National Registry of Childhood Tumours