

# Update on the National Lung Cancer Audit

**Dr Paul Beckett**

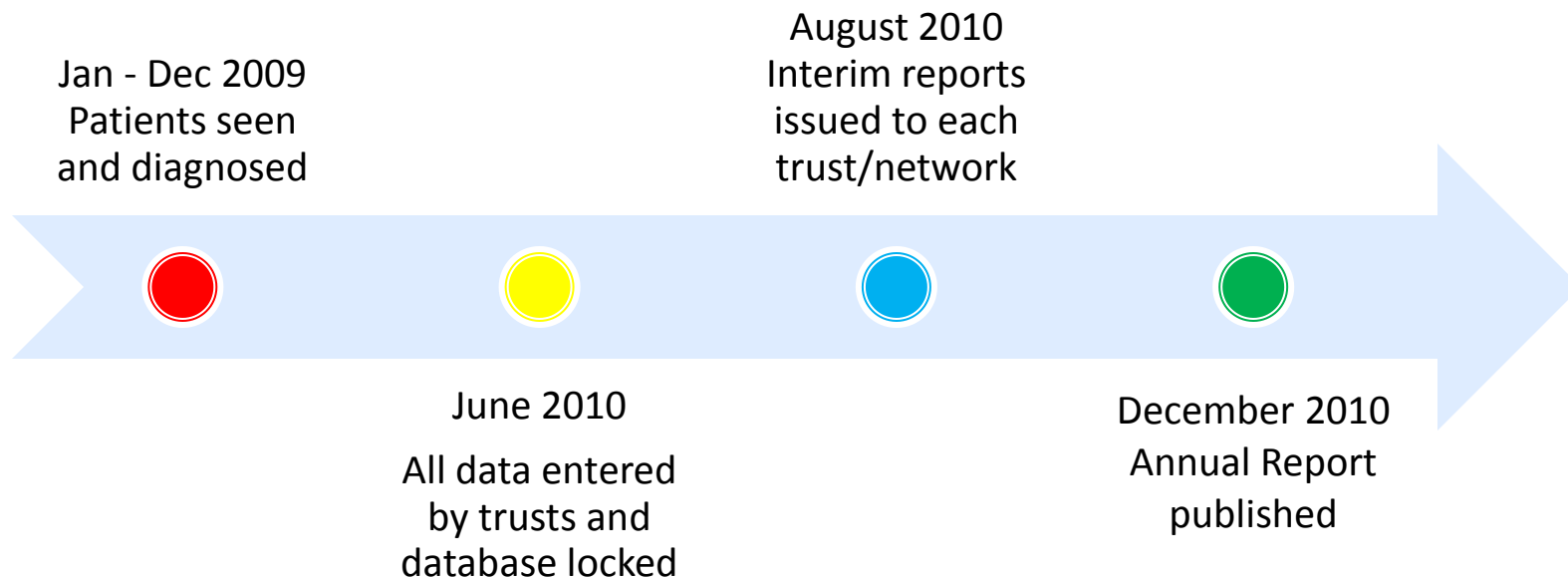
**Burton Hospitals NHS Foundation Trust**  
**Royal College of Physicians**

# Topics

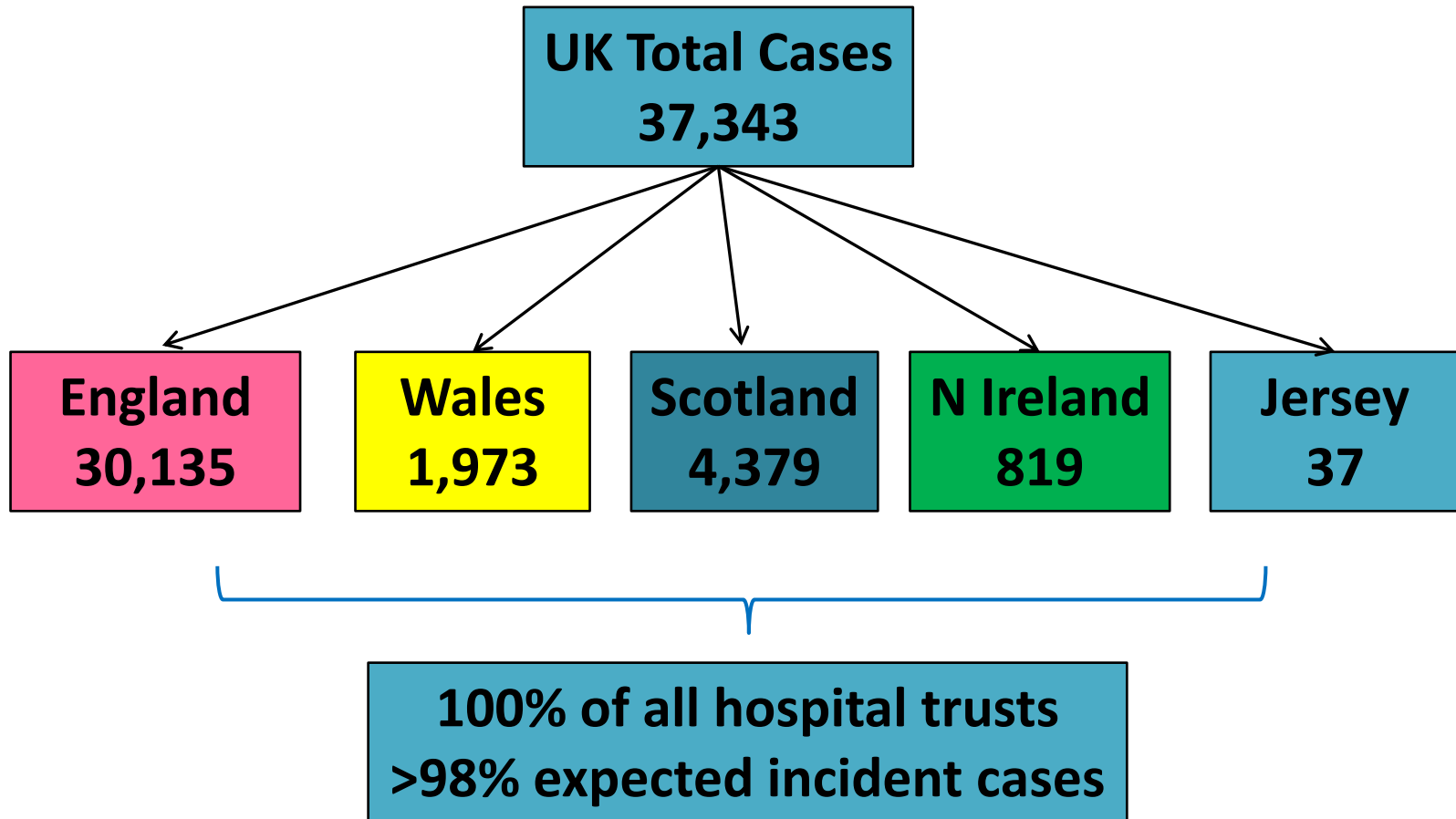
- Initial 2009 data
- Variation
- Age
- Pathology
- How is the data being used?
- The Future

# 2009 DATA

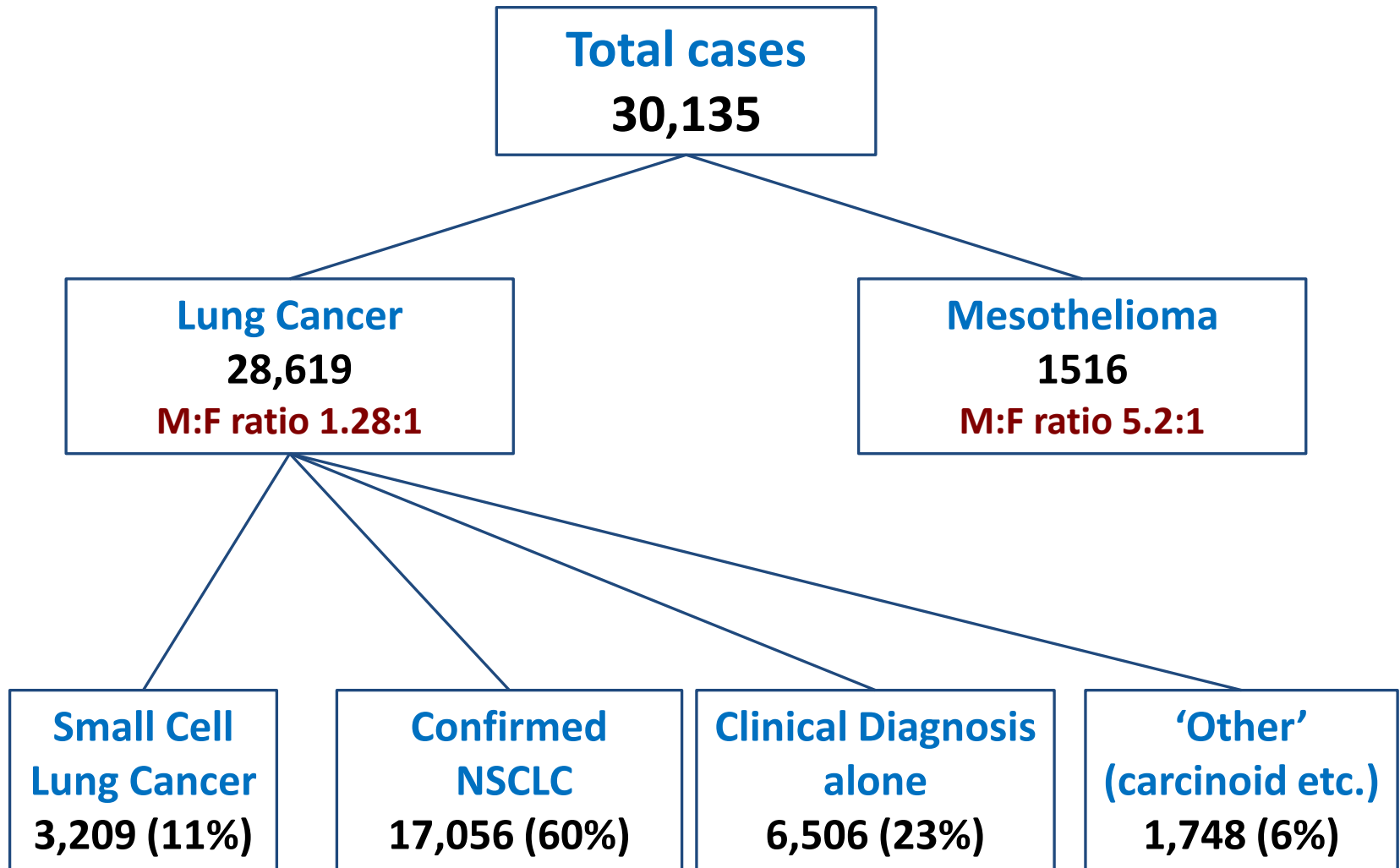
# Reporting Cycle



# Overall Patient Numbers



# Case Breakdown (England)



# Case Ascertainment and Data Completeness (England)

	2005	2006	2007	2008	2009
<b>Case Ascertainment</b>					
Trusts submitting data	<b>77%</b>	<b>93%</b>	<b>96.5%</b>	<b>98.1%</b>	<b>100%</b>
Number of cases	<b>10,920</b>	<b>16,922</b>	<b>20,639</b>	<b>27,818</b>	<b>30,135</b>
Case ascertainment	<b>40%</b>	<b>66%</b>	<b>75%</b>	<b>92%</b>	<b>98%</b>
<b>Data completeness</b>					
Stage	<b>51%</b>	<b>55%</b>	<b>70%</b>	<b>77%</b>	<b>81%</b>
Performance status	<b>66%</b>	<b>77%</b>	<b>80%</b>	<b>87%</b>	<b>78%</b>
Treatment	<b>66%</b>	<b>72%</b>	<b>79%</b>	<b>82%</b>	<b>89%</b>

# Distribution of Stage (TNM v6) and PS\*

Stage	n	%
IA	1,294	6.1
1B	1,774	8.4
IIA	170	0.8
IIB	1,135	5.4
IIIA	2,052	9.7
IIIB	4,120	19.5
IV	10,593	50.1

PS	n	%
0	4,680	19.8
1	7,912	33.4
2	5,086	21.5
3	4,503	19
4	1,478	6.3

**\*Where recorded**



# Headline Indicators

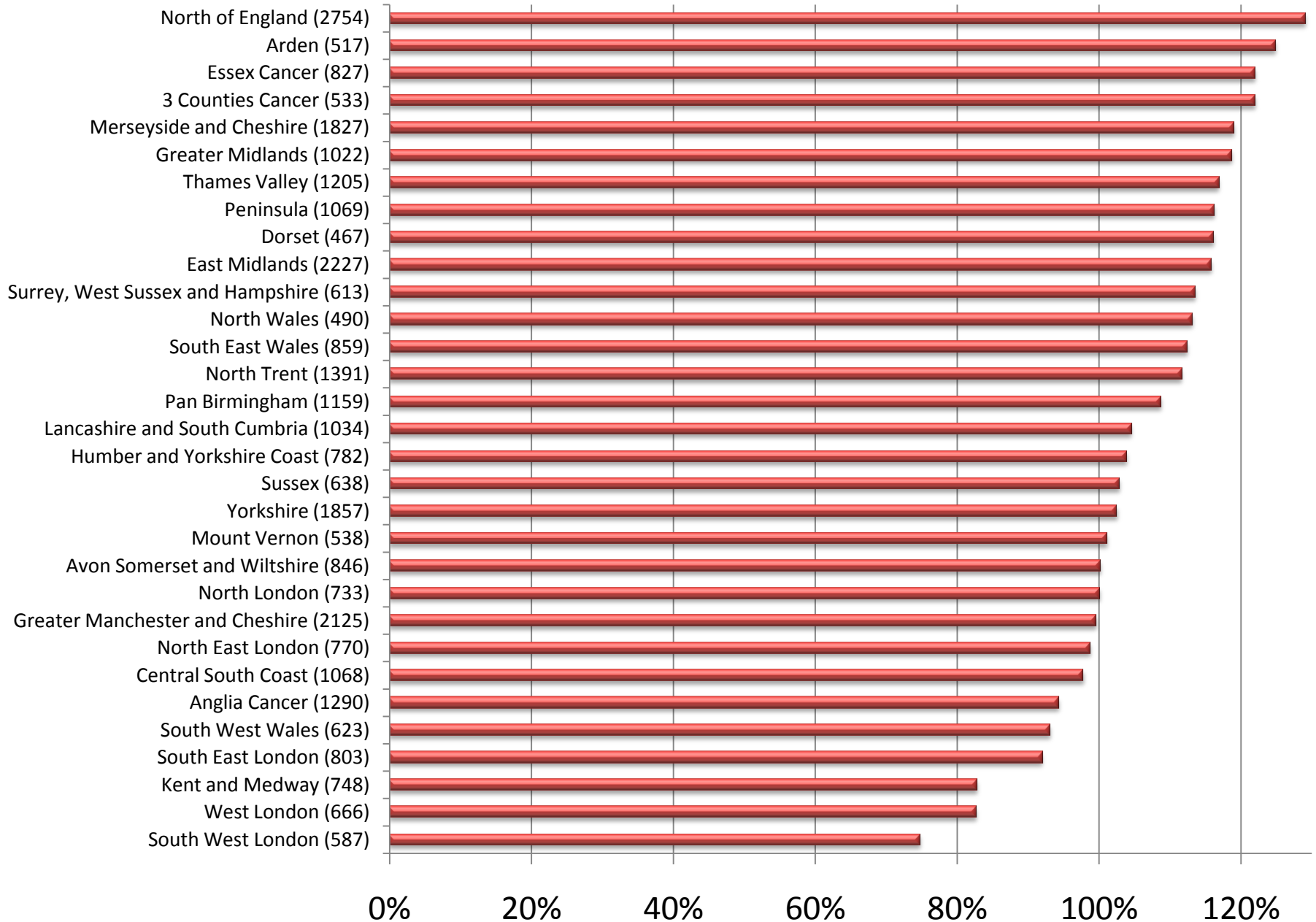
Country	HCR	Active treatment	Resection rate	Chemo in SCLC
England	75.9%	59.2%	13.9%	65.4%
Scotland	77.7%	64.1%	11.3%	68.9%
Wales	70.9%	56.9%	10.6%	

England	2005	2006	2007	2008	2009
Case ascertainment (%)	40	66	75	92	>97
% discussed at MDT	79	84.3	86.8	88.6	93.8
Tissue confirmation rate (%)	68	66	65	66.7	75.9
Overall surgical resection rate (%)	9	9.4	10.3	11.2	13.9
Resection rate: confirmed NSCLC (%)	13.8	14.3	15.2	16.0	18.4
Active treatment rate (%)	45	50	52	54	59.2
Small Cell chemotherapy rate (%)	57.7	61.7	64.5	63.0	65.4

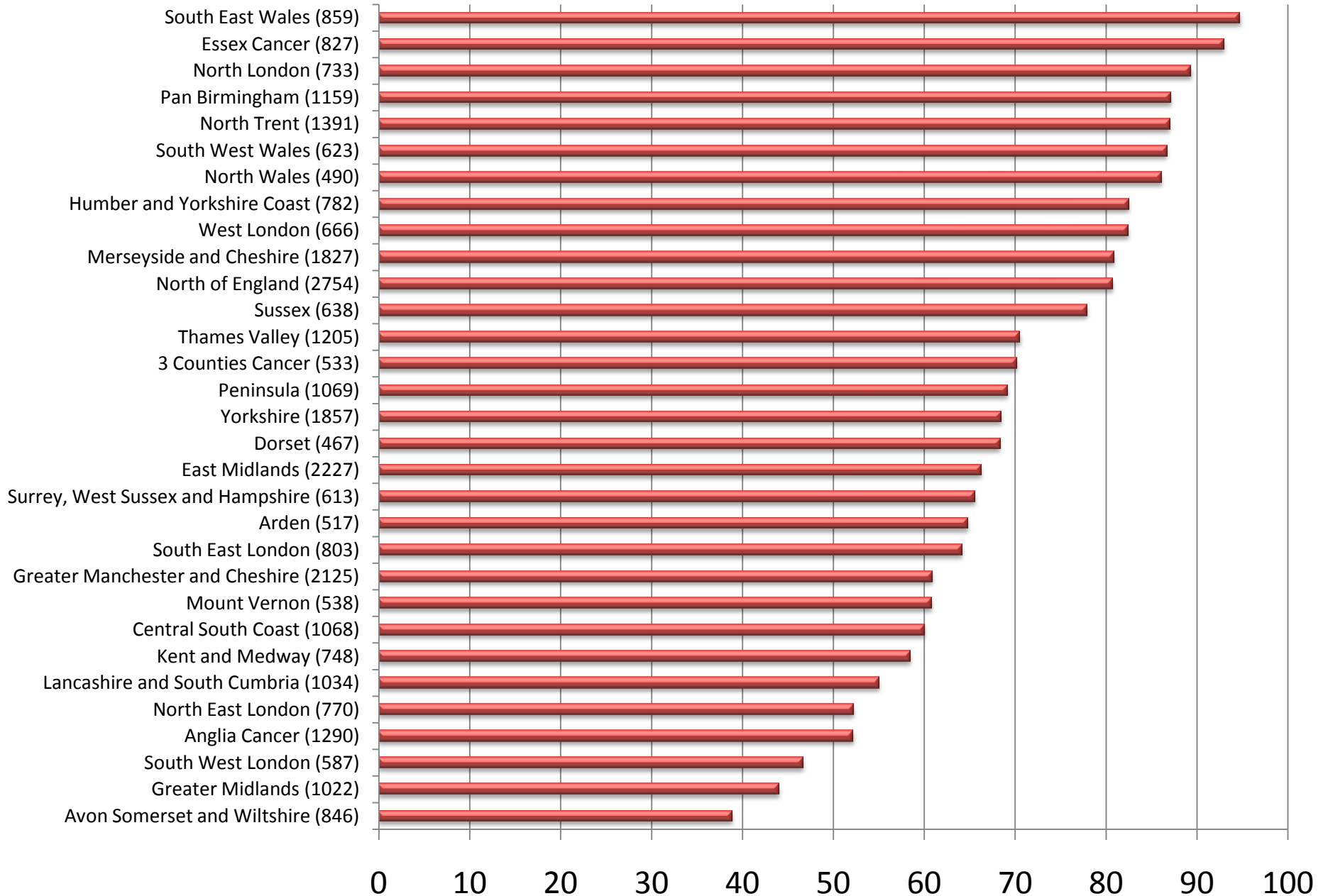
National Lung Cancer Audit

# VARIATION

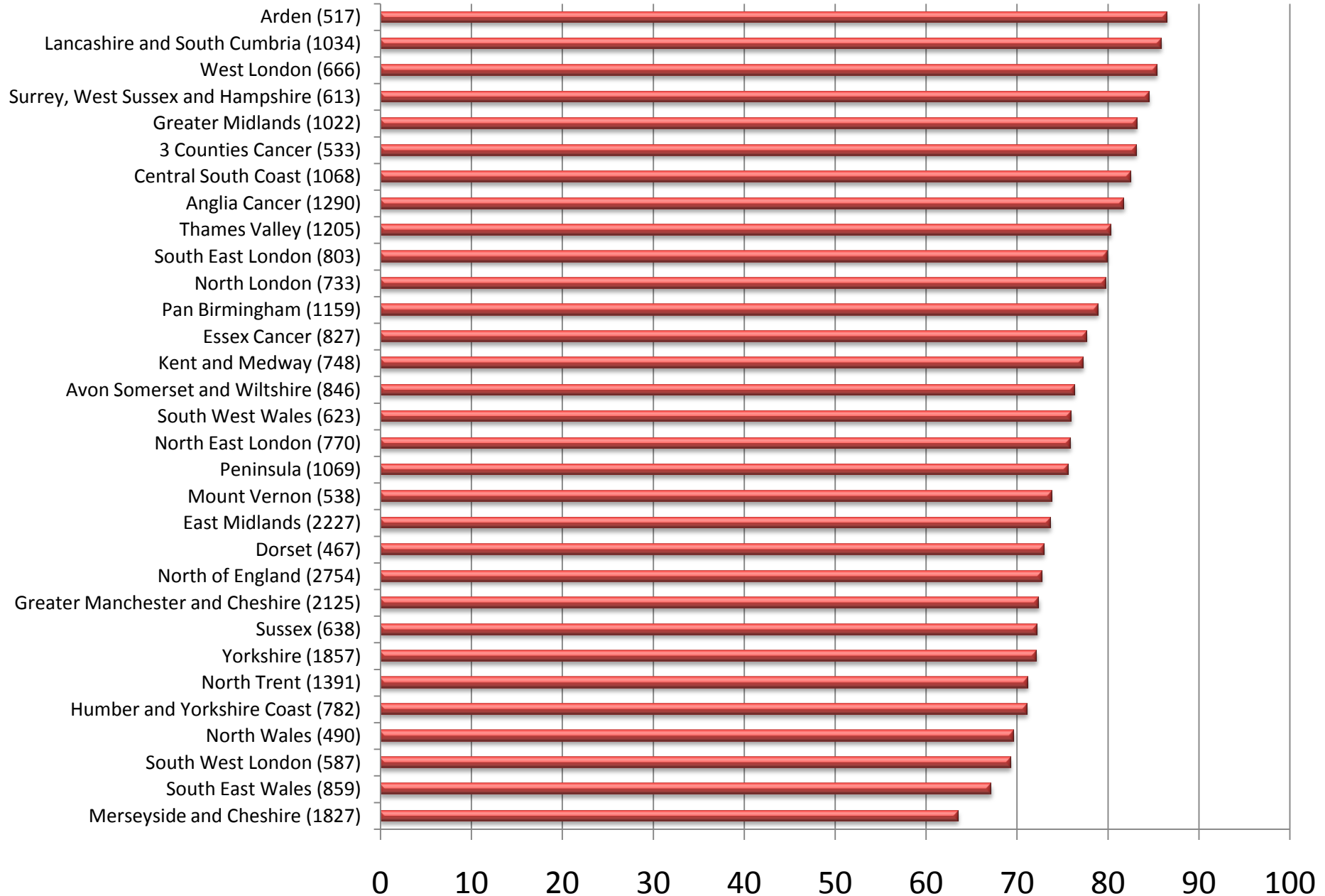
## % of expected



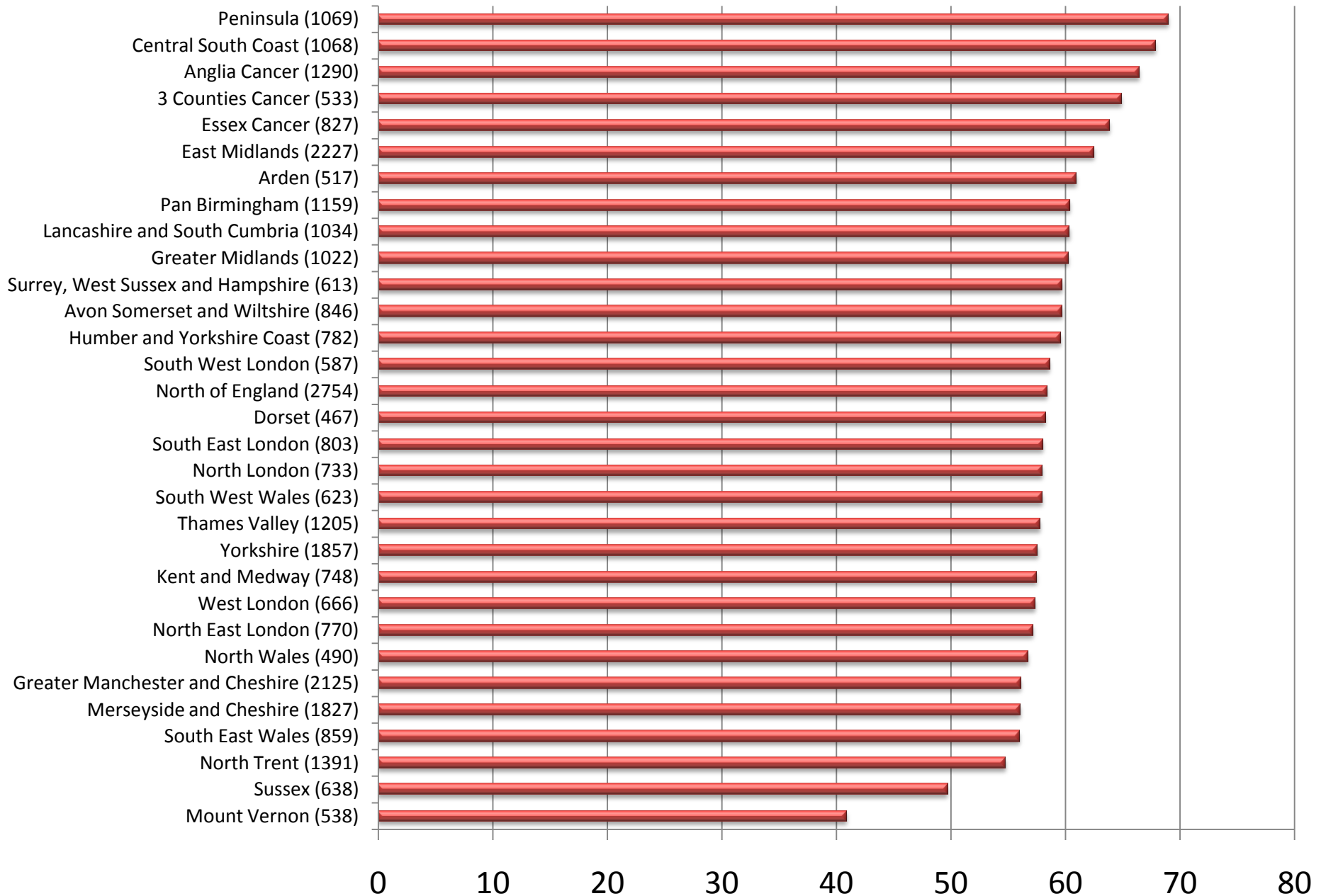
# PS and Stage Recorded



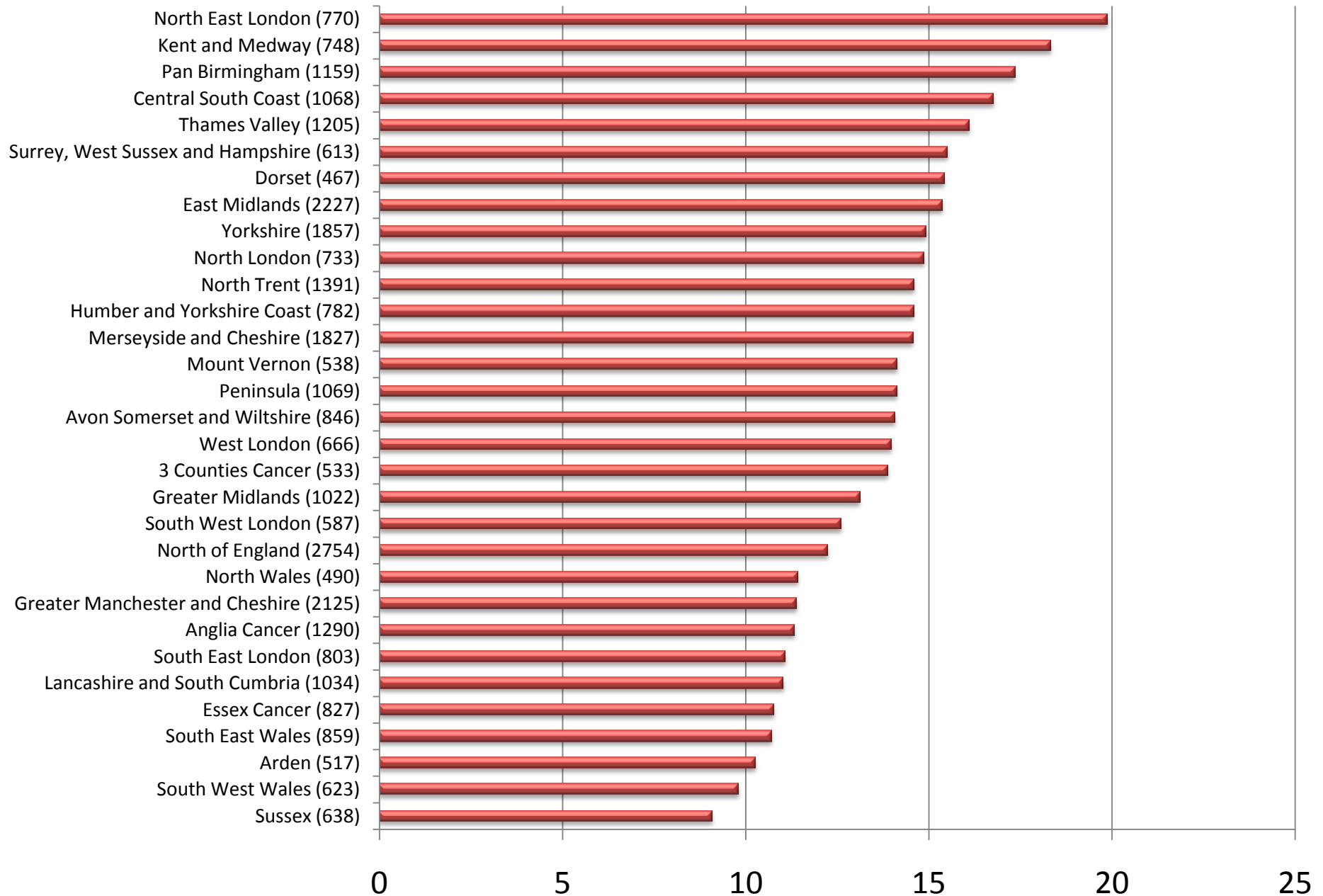
# Histological Confirmation Rate



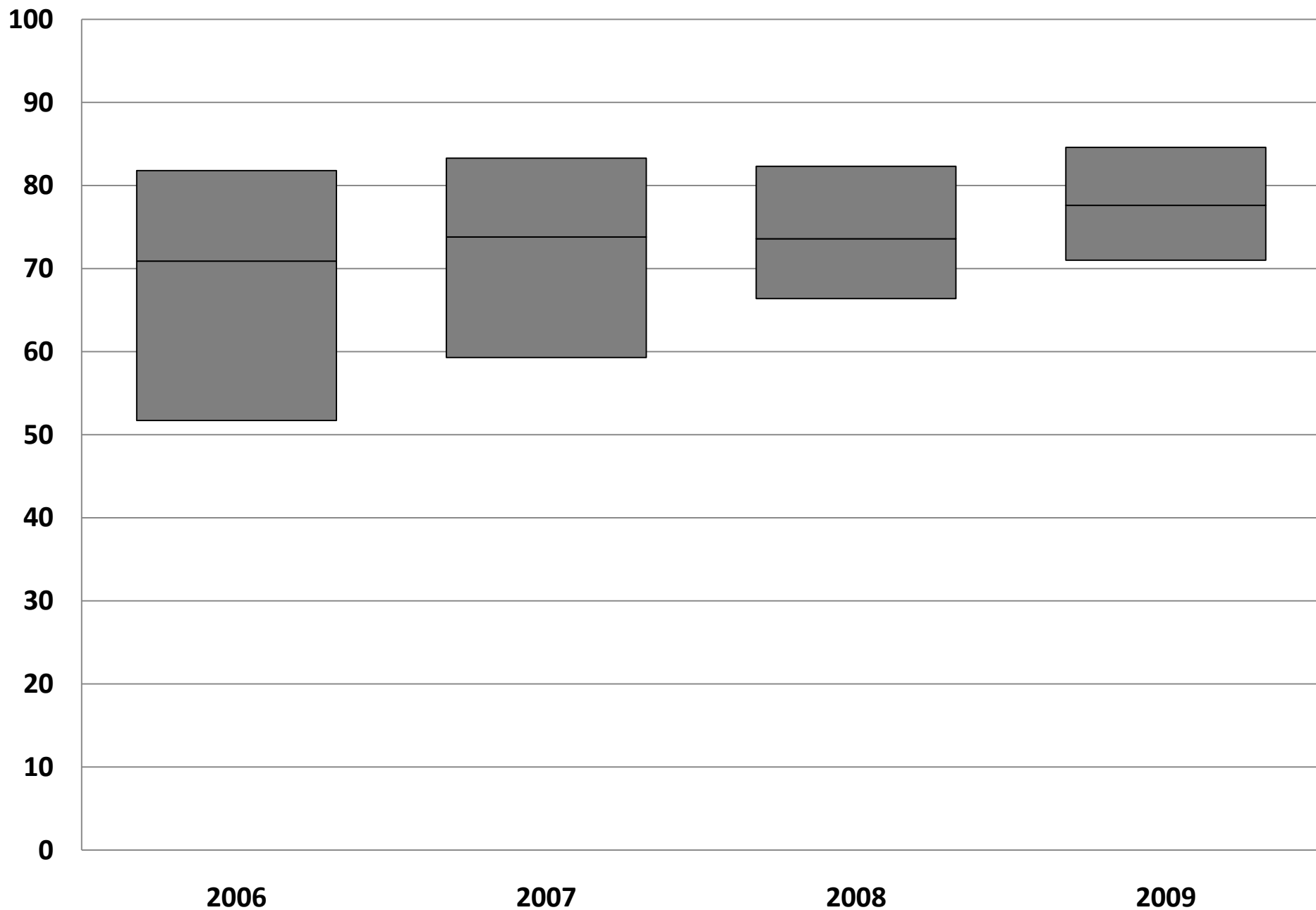
# Active Treatment



# Surgery (Overall)

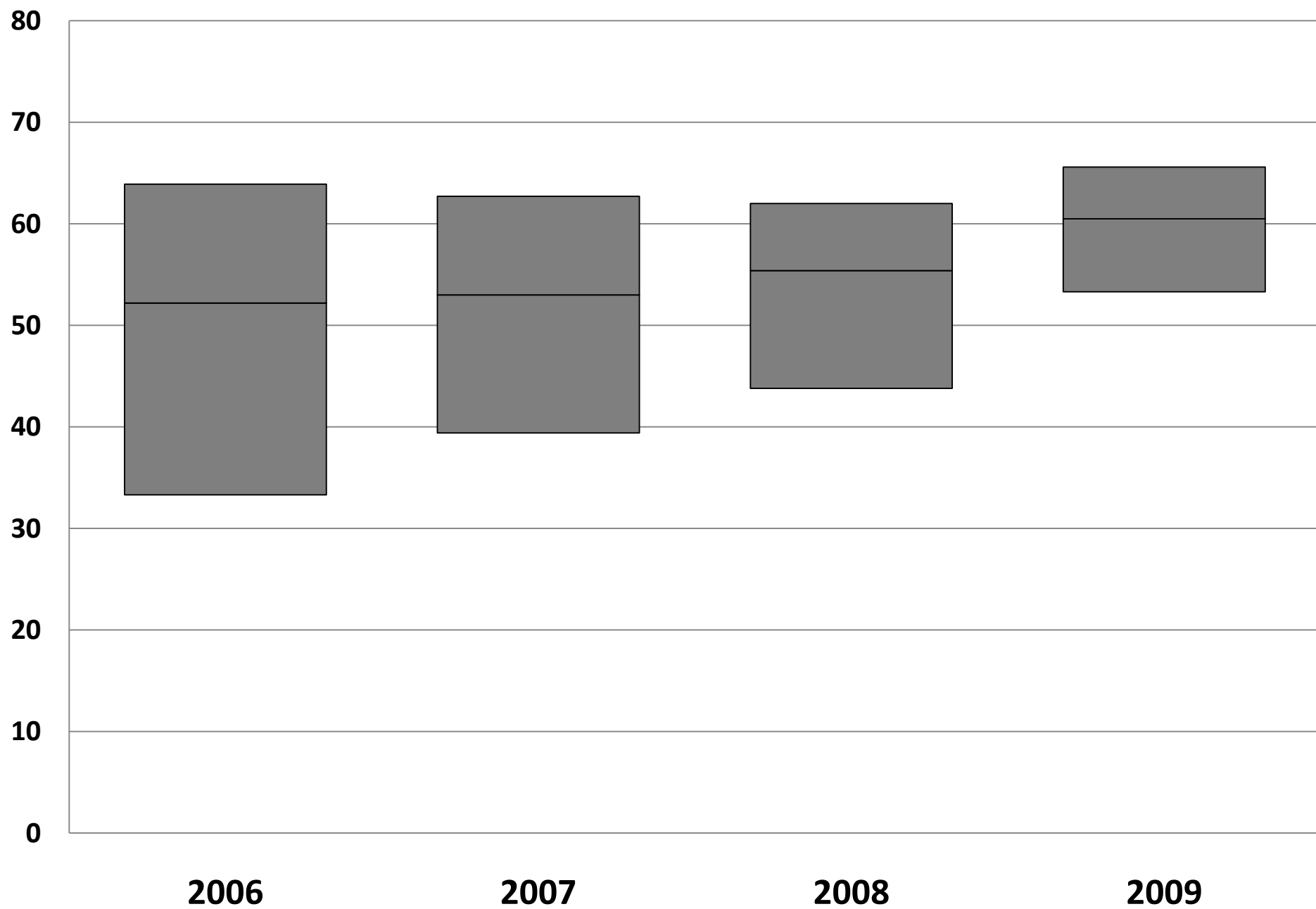


# Histological Confirmation rate (%); median $\pm$ IQR

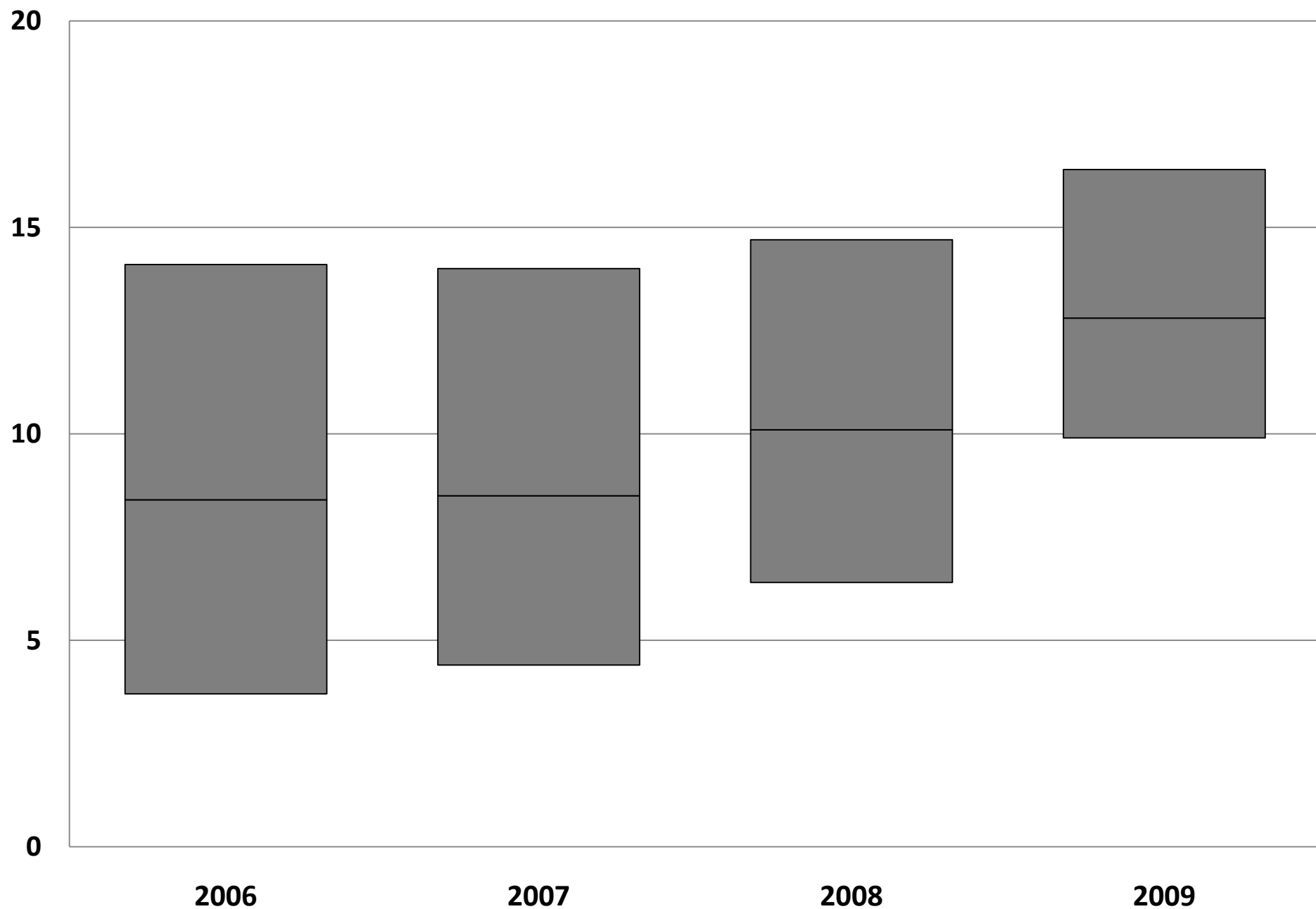




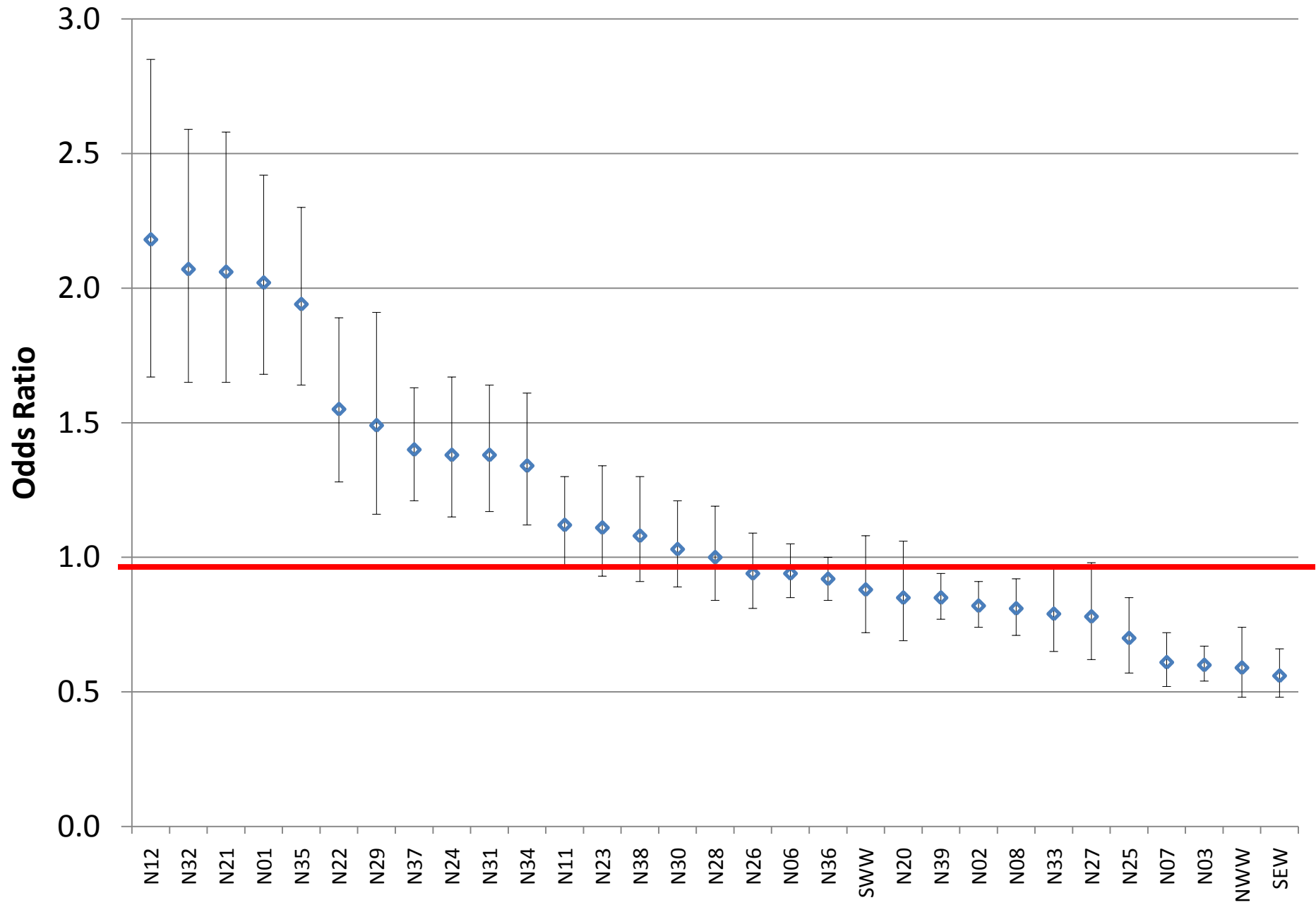
# Active Anti-Cancer Treatment rate (%); median $\pm$ IQR



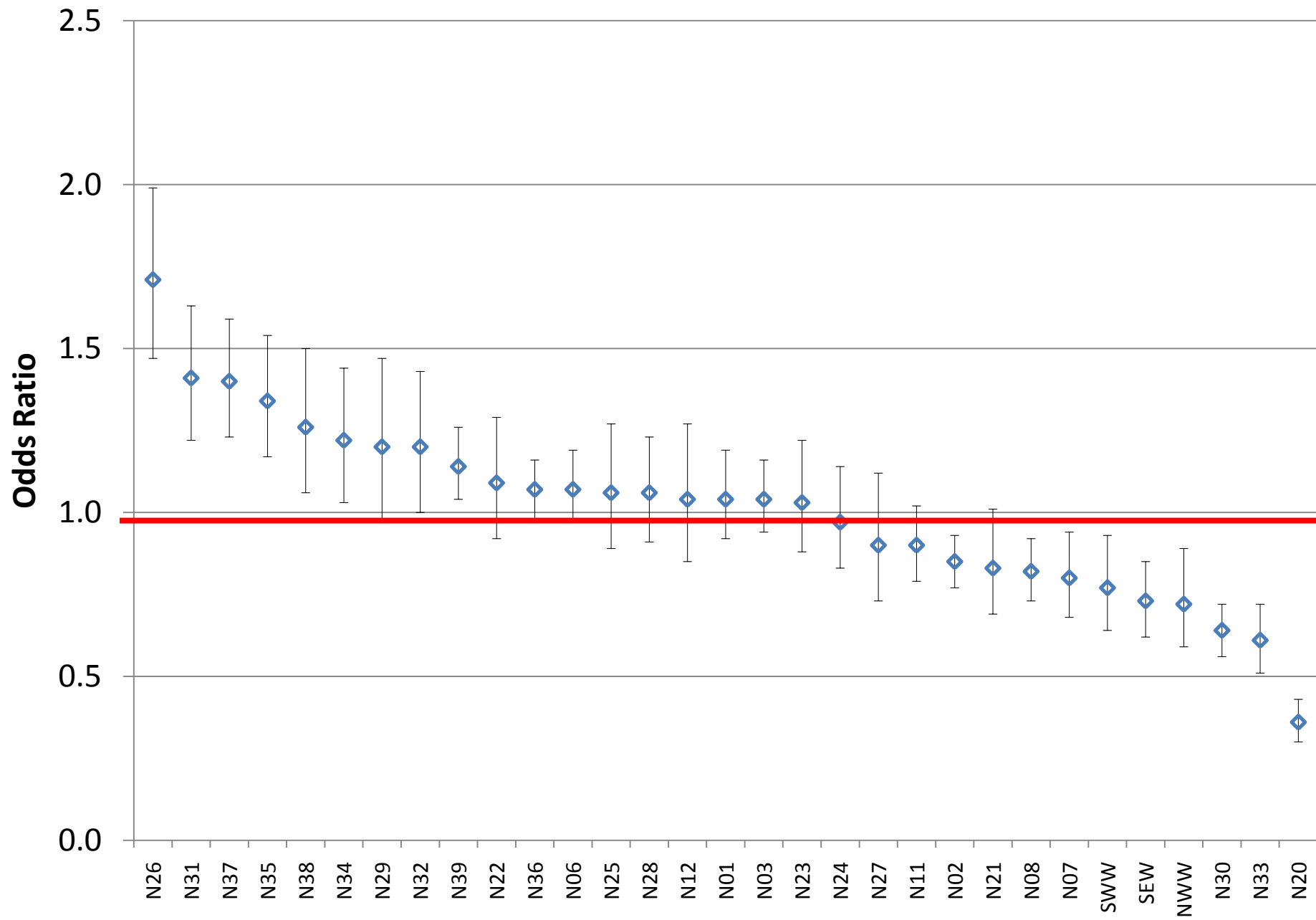
# Surgical Resection Rate – all cases (%)median $\pm$ IQR



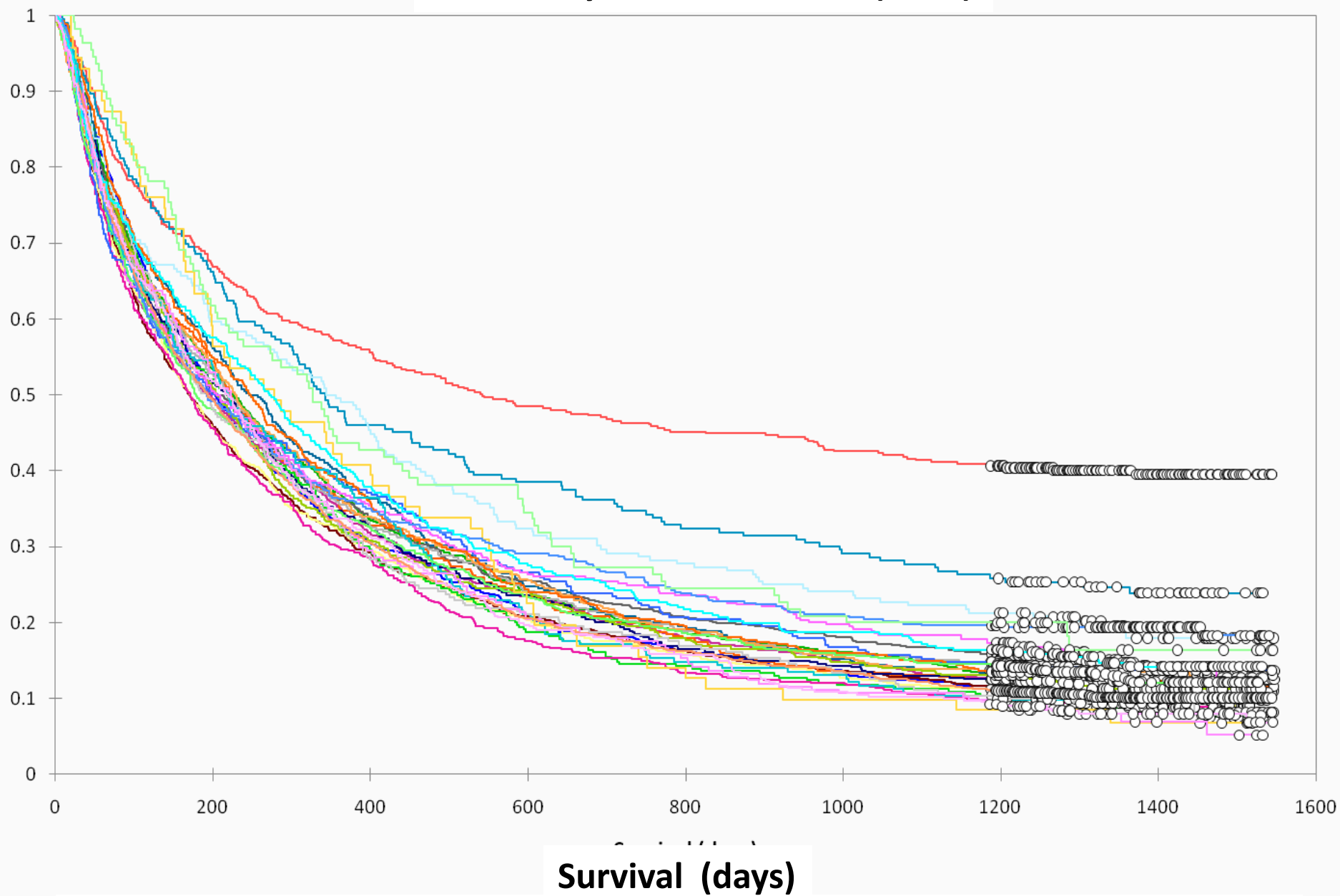
# Odds Ratio for Histological Confirmation by Network (2009)



# Odds Ratio for Active Treatment by Network (2009)

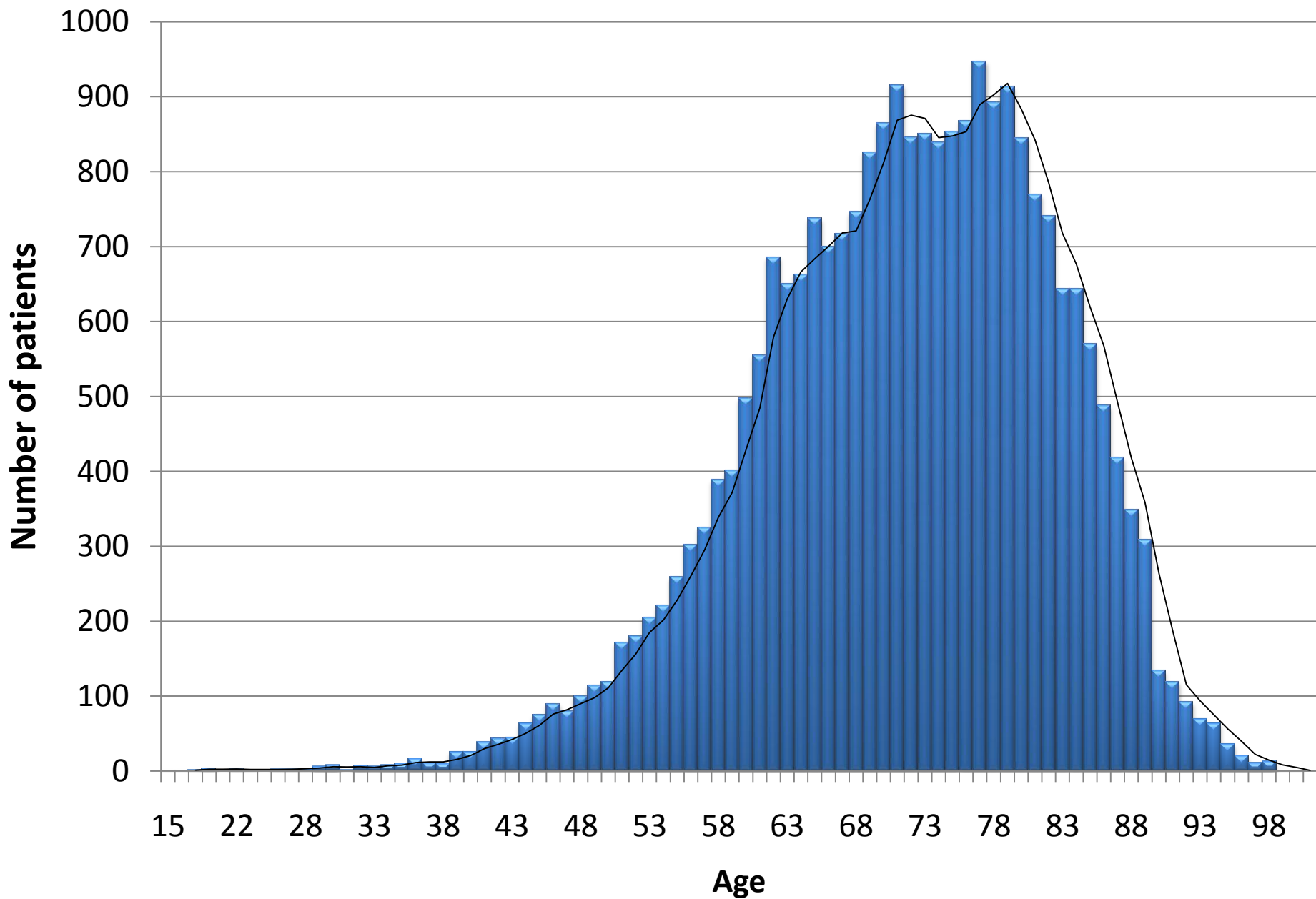


**Survival by Cancer Network (2006)**

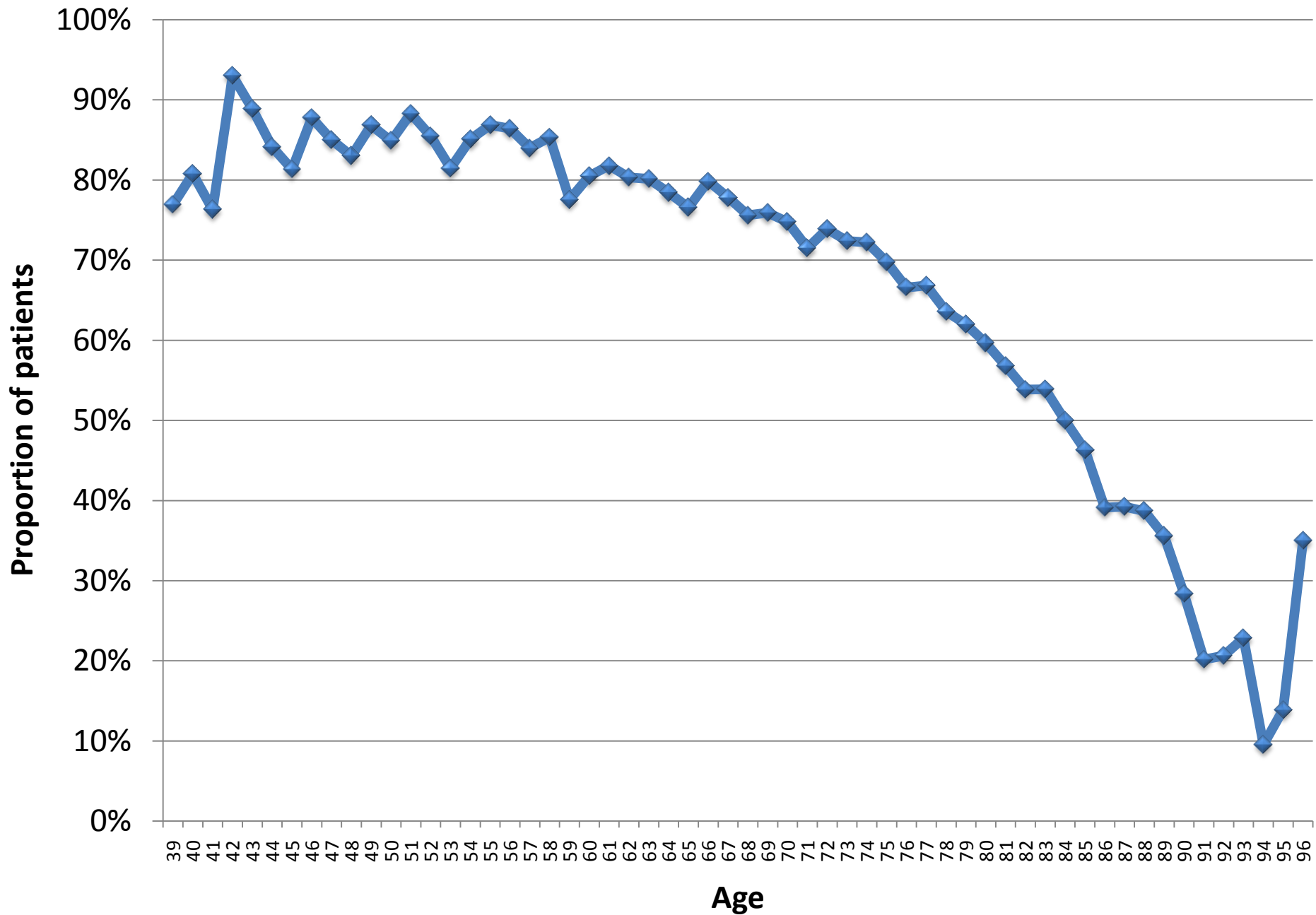


# AGE

## Age Distribution (England)



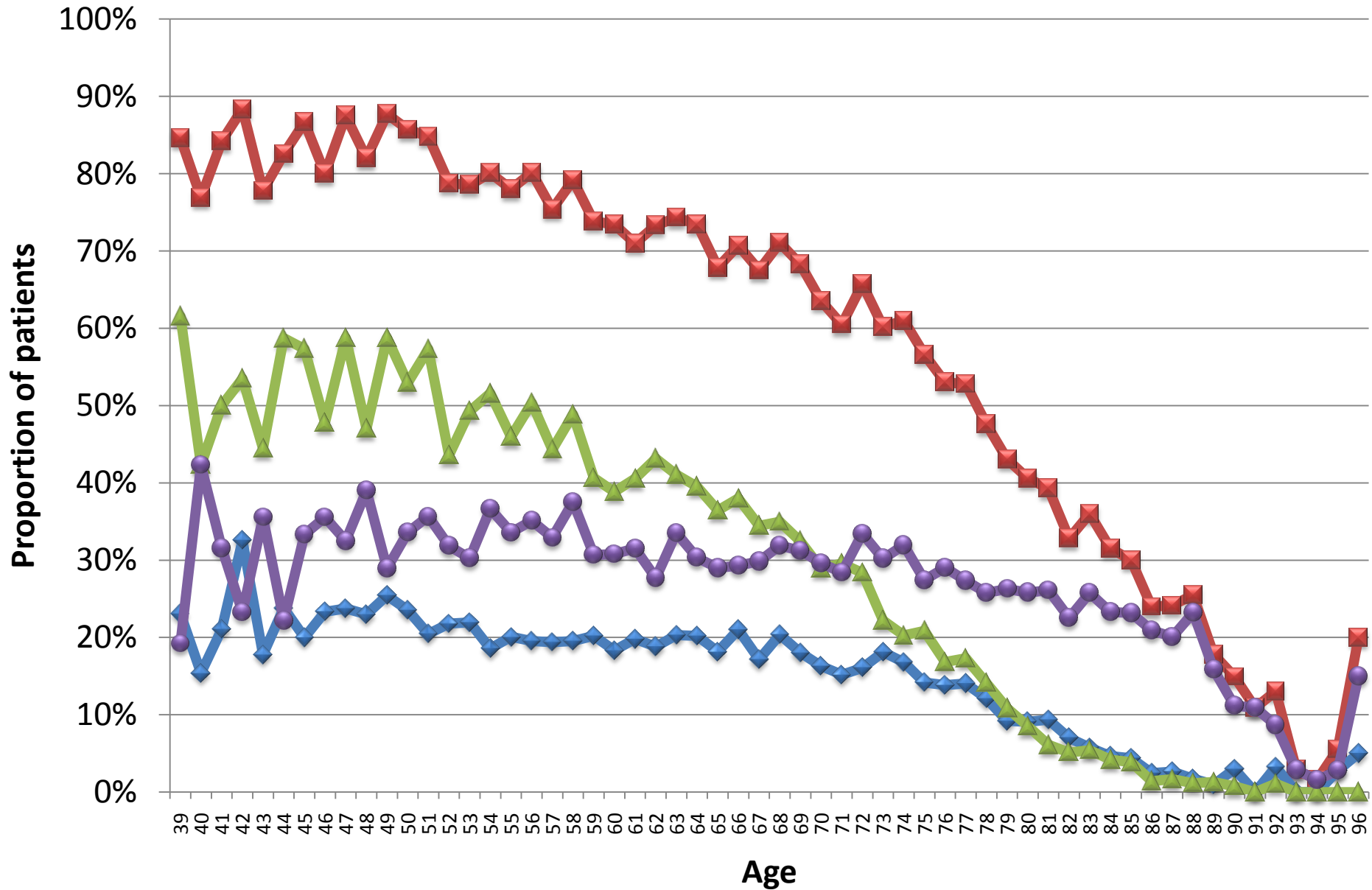
# Histological Confirmation



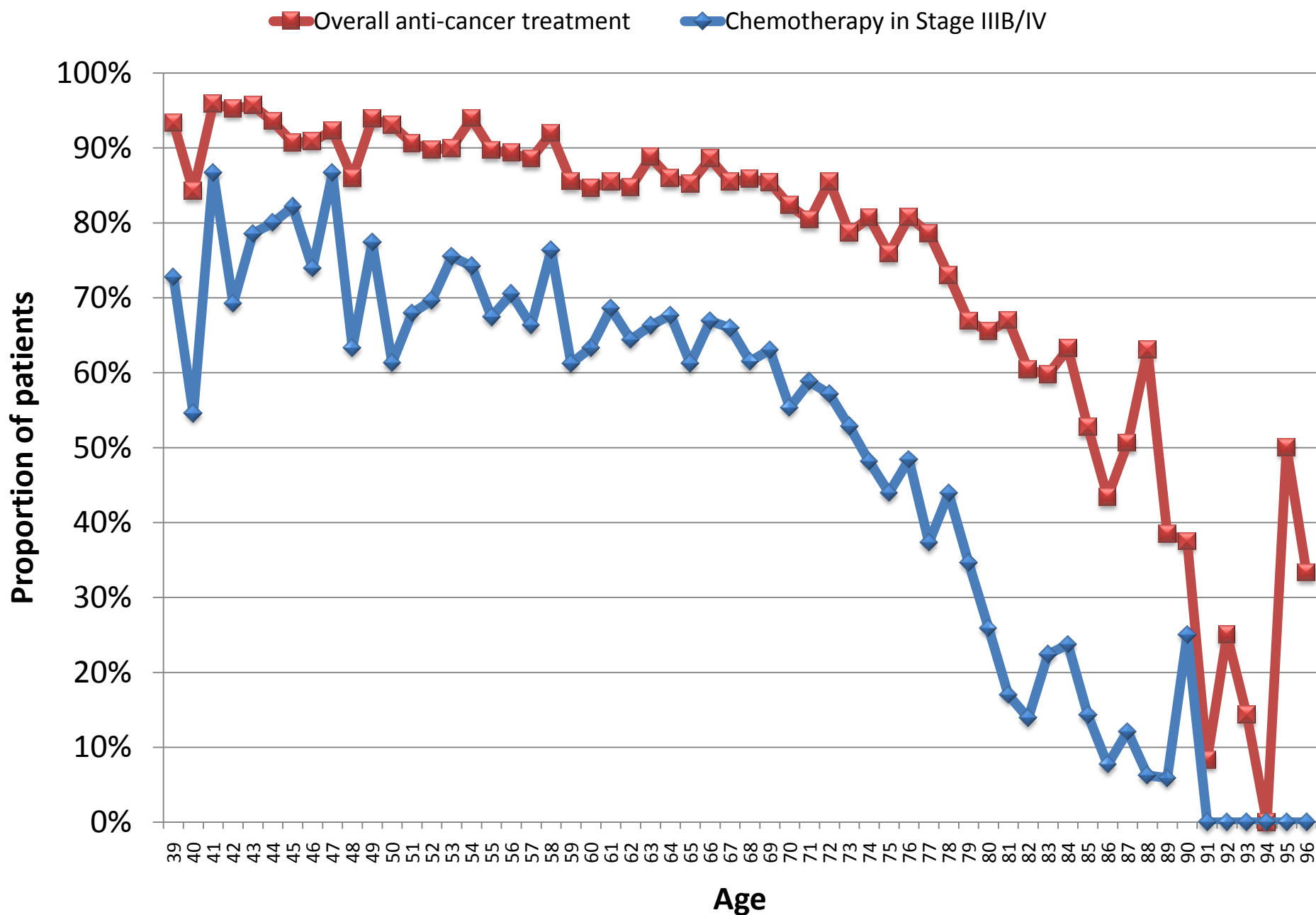


# Treatment

■ Anti-cancer treatment    ◆ Had surgery    ▲ Had chemotherapy    ● Had radiotherapy

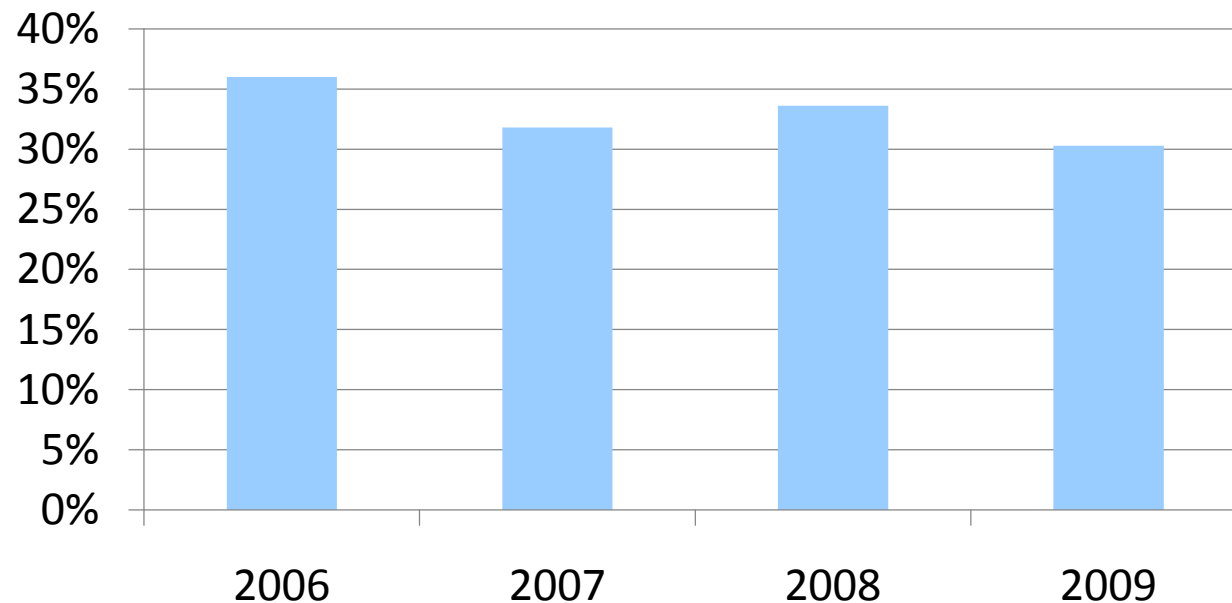


# Treatment Rates in PS 0-1 with no Co-Morbidities

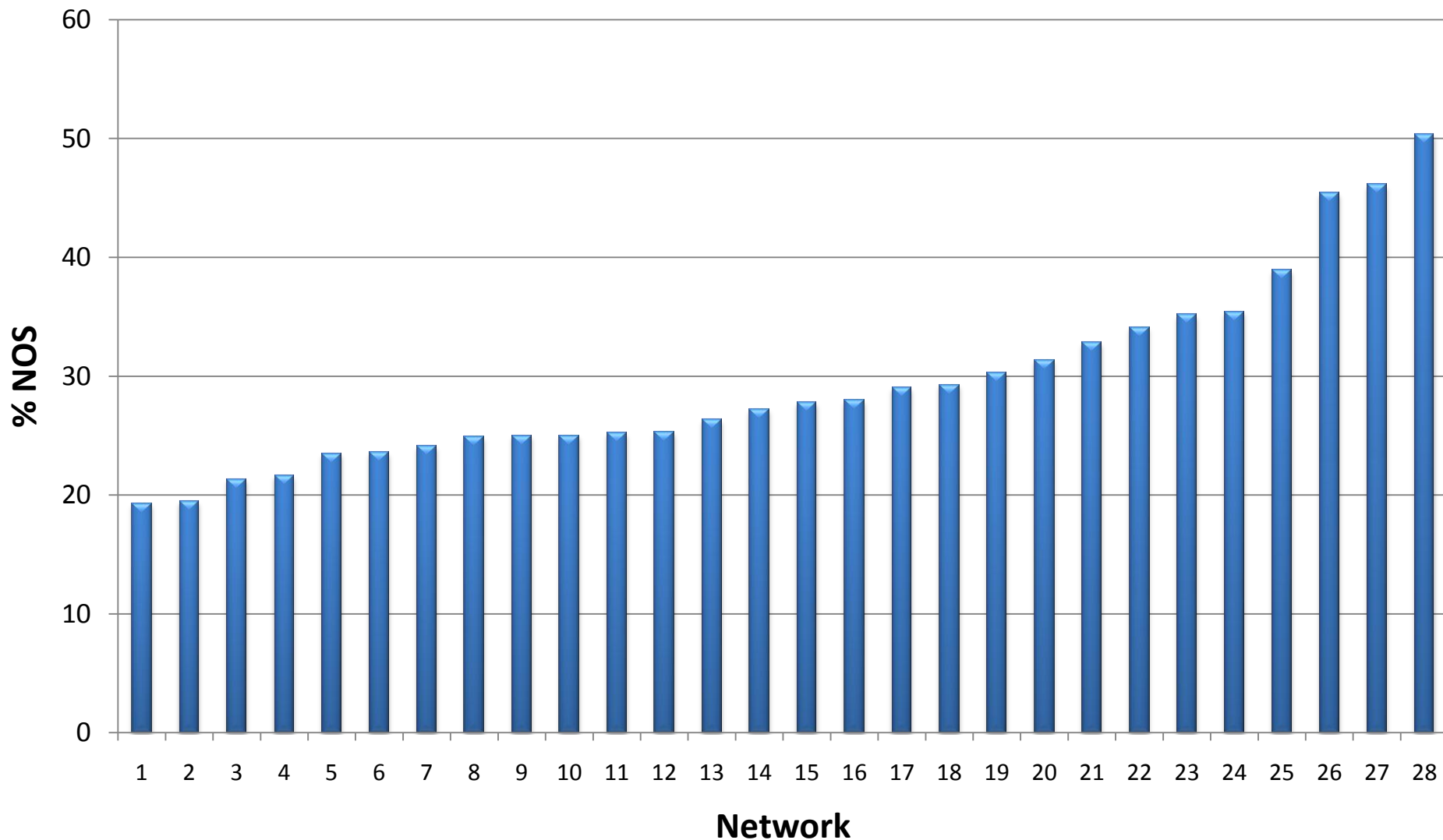


# PATHOLOGY

# NSCLC 'NOS' rate



# NSCLC 'NOS' Rate by Network (2009)



# HOW IS THE DATA BEING USED?

# How Is The Data Being Used?

- Datapacks
- NHS Choices
- ILCOP
- NICE Guidelines
- National Cancer Intelligence Network
- International Cancer Benchmarking Project
- ERS “European Quality Initiative for the Management of Lung Cancer
- LUCADA Fellow
- Other research
- Peer Review

# The Future

- Maintain enthusiasm
- Update dataset
- Revise reporting measures
- Strengthen links between measures and outcome (survival)



# Acknowledgments

- **All MDT staff/clinicians/CNSs *across the UK***
- NLCA Project team:
  - Dr Roz Stanley – project manager (Information Centre)
  - Drs Mick Peake & Ian Woolhouse – co-clinical leads (RCP)
  - Anthony Yelland – analyst (Information Centre)
- Laila Tata - Respiratory epidemiology department, Nottingham University
- Anna Rich – City Hospital Nottingham
- Analysts from Wales, Scotland (SCAN networks), Northern Ireland
- **Funding:** The Department of Health via HQIP