

Lung cancer: Six month, one year and five year cumulative survival by Government Office Region, PCT and sex, 1998-2006

Sharma P Riaz, Margreet Lüchtenborg, Karen Linklater,

Henrik Møller

Thames Cancer Registry

King's College London School of Medicine

Patients and methods

- We extracted data on patients diagnosed with lung cancer (ICD10 C33 and C34) living in England between 1998 and 2006 from the UK cancer repository dataset.
- We used Kaplan-Meier analysis to estimate the cumulative survival by Government Office Region (East Midlands, East of England, London, North East, North West, South East, South West, West Midlands, and Yorkshire and Humber), PCT and sex.



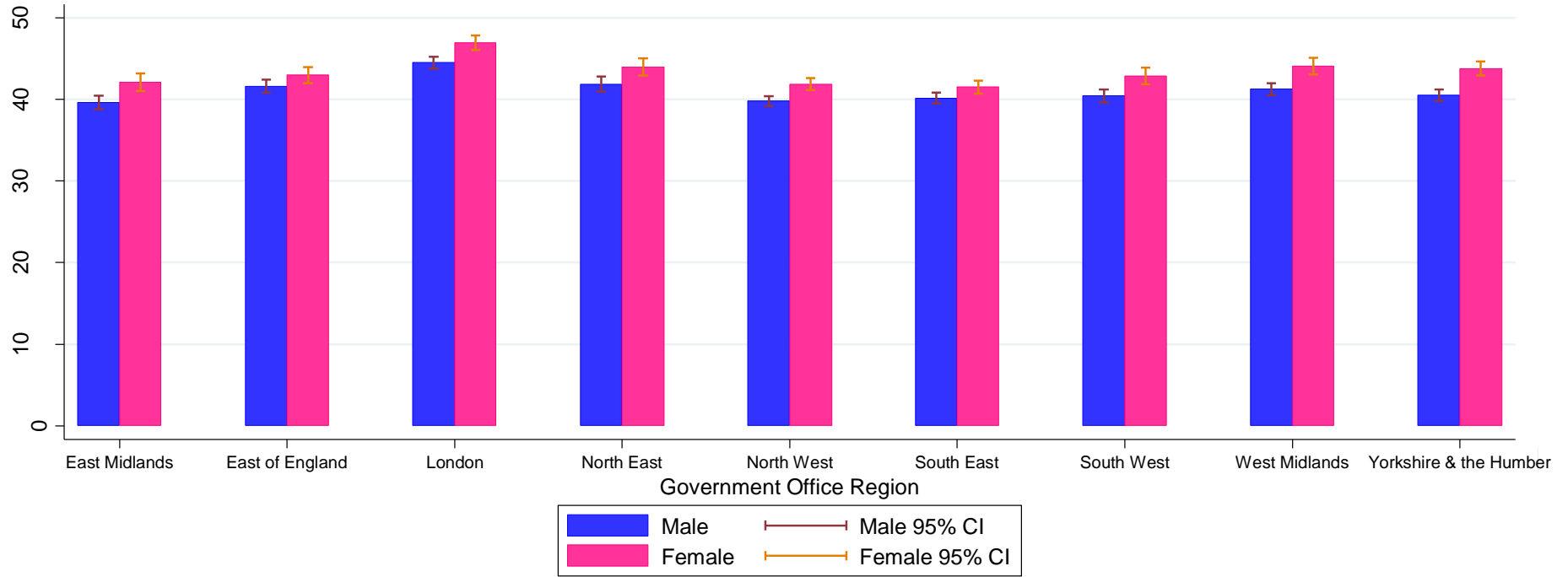
Six month survival: England

Six month cancer survival, England, 1998-2006, by sex and Government Office Region

Government Office Region	Male					Female				
	No. at risk	Deaths	Cumulative Survival (%)	95% CI		No. at risk	Deaths	Cumulative Survival (%)	95% CI	
				Lower	Upper				Lower	Upper
East Midlands	13,561	8,041	39.66	38.82	40.49	8,341	4,724	42.11	41.03	43.19
East of England	16,014	9,192	41.65	40.88	42.42	9,925	5,531	43.00	42.01	43.99
London	18,480	10,079	44.52	43.79	45.24	12,469	6,501	46.95	46.06	47.83
North East	11,928	6,815	41.90	41.00	42.80	8,933	4,916	44.00	42.96	45.04
North West	25,373	15,019	39.82	39.21	40.43	18,519	10,556	41.89	41.17	42.61
South East	22,204	13,061	40.17	39.52	40.83	14,488	8,318	41.52	40.71	42.33
South West	14,439	8,447	40.45	39.64	41.26	8,987	5,054	42.90	41.87	43.94
West Midlands	16,821	9,722	41.27	40.52	42.03	9,676	5,310	44.10	43.09	45.10
Yorkshire and the Humber	19,039	11,136	40.55	39.84	41.25	13,377	7,383	43.80	42.95	44.65
Total	157,859	91,512				104,715	58,293			



Six month survival: England



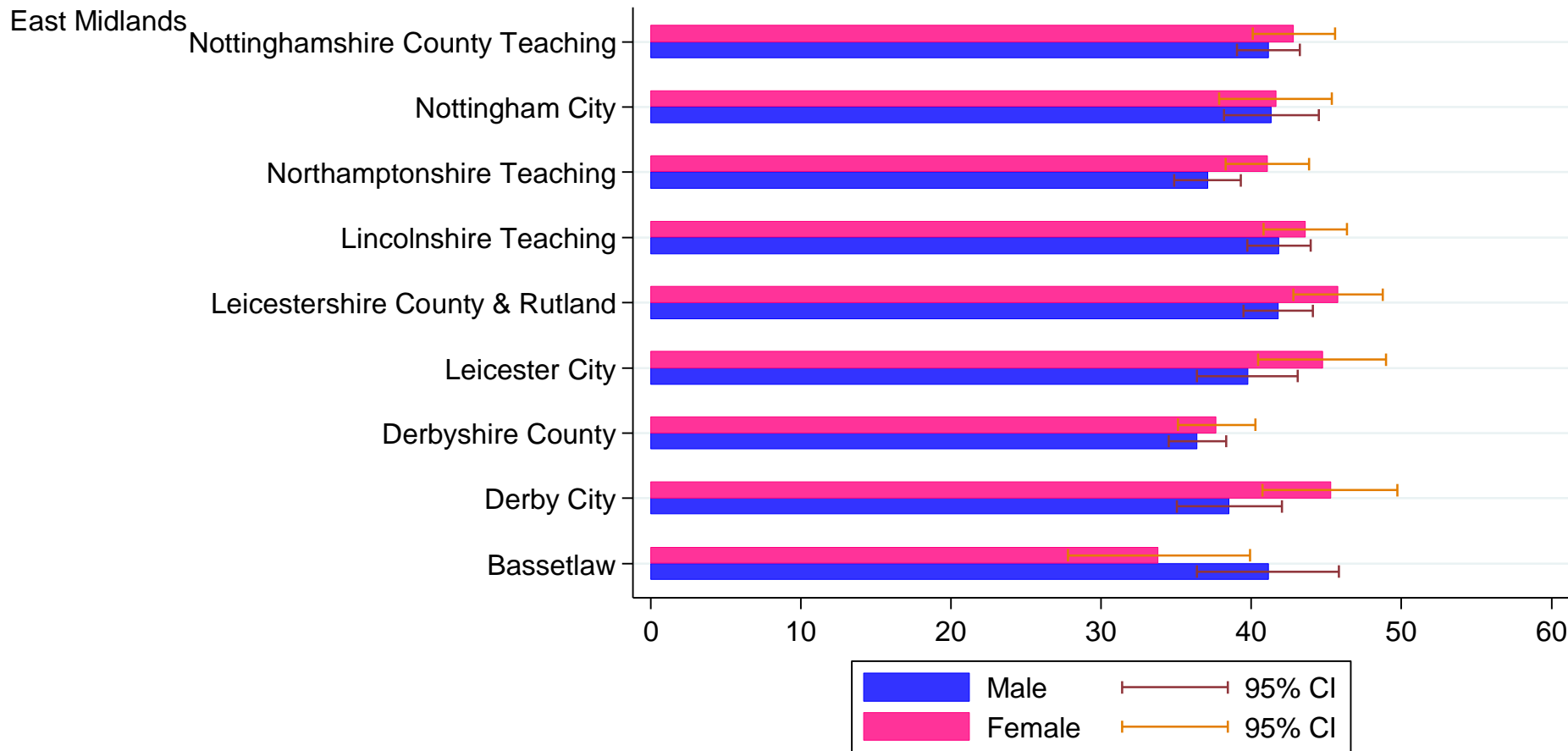
Six month survival: East Midlands

Six month cancer survival, East Midlands, 1998-2006, by sex and PCT

East Midlands PCT	Male					Female				
	No. at risk	Deaths	Cumulative Survival (%)	95% CI		No. at risk	Deaths	Cumulative Survival (%)	95% CI	
				Lower	Upper				Lower	Upper
BASSETLAW	419	244	41.14	36.37	45.84	240	155	33.80	27.77	39.92
DERBY CITY	758	459	38.54	35.03	42.03	484	260	45.29	40.74	49.72
DERBYSHIRE COUNTY	2,452	1,537	36.41	34.48	38.33	1,396	855	37.69	35.11	40.26
LEICESTER CITY	839	496	39.76	36.39	43.10	543	292	44.75	40.44	48.96
LEICESTERSHIRE COUNTY AND RUTLAND	1,795	1,027	41.81	39.49	44.11	1,113	589	45.80	42.80	48.74
LINCOLNSHIRE TEACHING	2,176	1,235	41.78	39.66	43.89	1,263	695	43.55	40.75	46.31
NORTHAMPTONSHIRE TEACHING	1,887	1,171	37.08	34.87	39.28	1,242	719	41.08	38.30	43.84
NOTTINGHAM CITY	951	551	41.36	38.19	44.50	683	390	41.64	37.86	45.37
NOTTINGHAMSHIRE COUNTY TEACHING	2,199	1,266	41.14	39.04	43.22	1,303	727	42.85	40.10	45.57



Six month survival: East Midlands



Six month survival: West Midlands

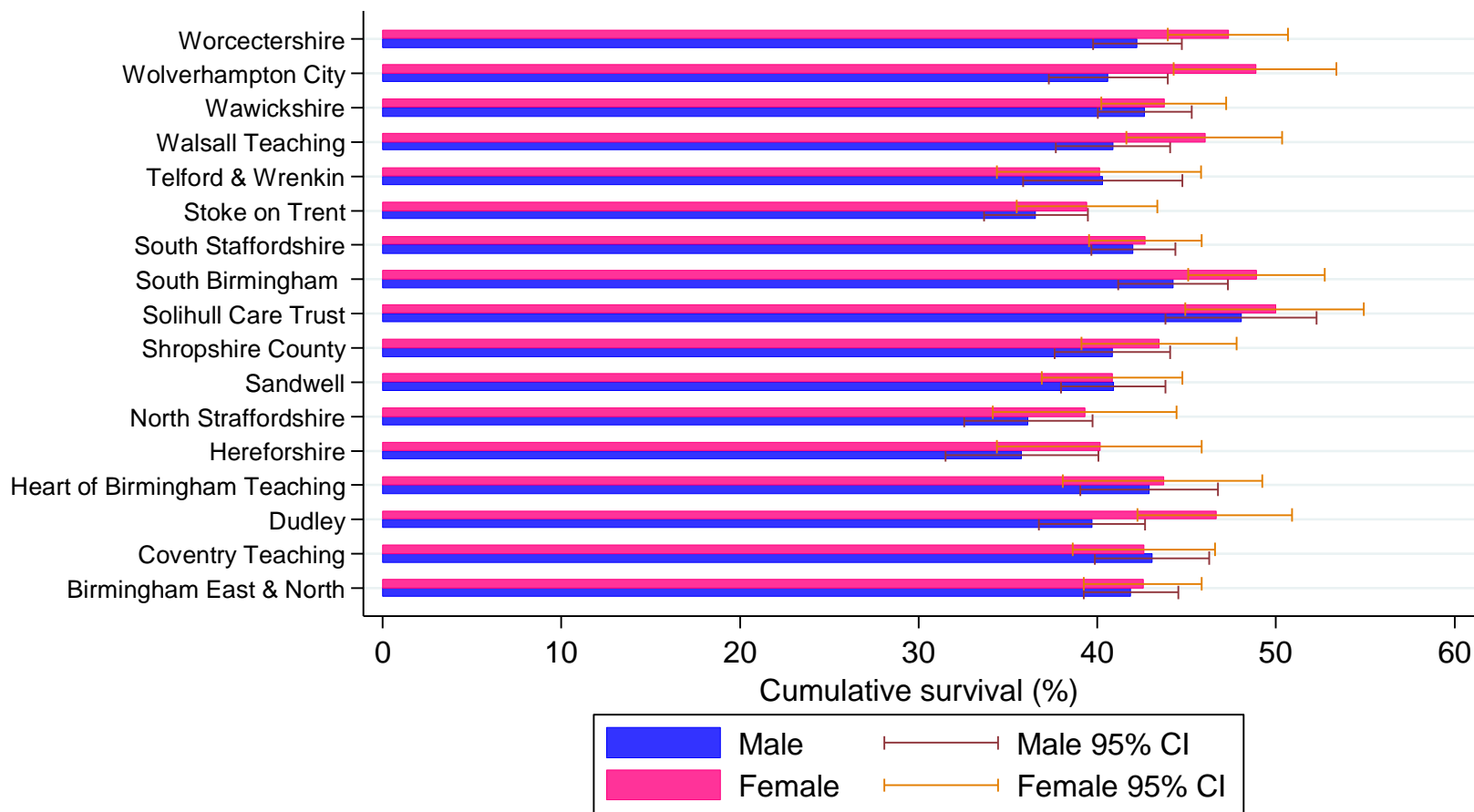
Six month cancer survival, West Midlands, 1998-2006, by sex and PCT

West Midlands PCT	Male					Female				
	No. at risk	Deaths	Cumulative Survival (%)	95% CI		No. at risk	Deaths	Cumulative Survival (%)	95% CI	
				Lower	Upper				Lower	Upper
BIRMINGHAM EAST AND NORTH	1,373	782	41.91	39.25	44.54	881	497	42.58	39.26	45.86
COVENTRY TEACHING	933	524	43.09	39.86	46.27	603	341	42.65	38.64	46.60
DUDLEY	1,064	632	39.71	36.73	42.67	517	272	46.65	42.25	50.92
HEART OF BIRMINGHAM TEACHING	642	362	42.92	39.04	46.75	309	171	43.73	38.08	49.23
HEREFORDSHIRE	494	313	35.79	31.52	40.06	289	169	40.17	34.39	45.86
NORTH STAFFORDSHIRE	704	444	36.15	32.57	39.73	360	213	39.32	34.17	44.43
SANDWELL	1,119	649	40.92	37.98	43.82	619	358	40.84	36.89	44.75
SHROPSHIRE COUNTY	909	529	40.85	37.61	44.07	515	285	43.50	39.11	47.79
SOLIHULL CARE TRUST	552	281	48.11	43.83	52.26	395	193	50.03	44.92	54.91
SOUTH BIRMINGHAM	1,029	565	44.26	41.17	47.30	676	339	48.96	45.09	52.72
SOUTH STAFFORDSHIRE	1,727	985	42.03	39.66	44.37	978	549	42.72	39.56	45.84
STOKE ON TRENT	1,080	674	36.56	33.66	39.47	601	359	39.44	35.48	43.37
TELFORD AND WREKIN	473	277	40.33	35.84	44.78	290	170	40.13	34.38	45.81
WALSALL TEACHING	922	539	40.89	37.68	44.08	505	271	46.06	41.65	50.36
WARWICKSHIRE	1,386	783	42.67	40.02	45.28	794	438	43.76	40.24	47.22
WOLVERHAMPTON CITY	863	501	40.63	37.30	43.94	476	237	48.93	44.28	53.40
WORCESTERSHIRE	1,551	882	42.26	39.76	44.73	868	448	47.35	43.95	50.68



Six month survival: West Midlands

West Midlands



Six month survival: East of England

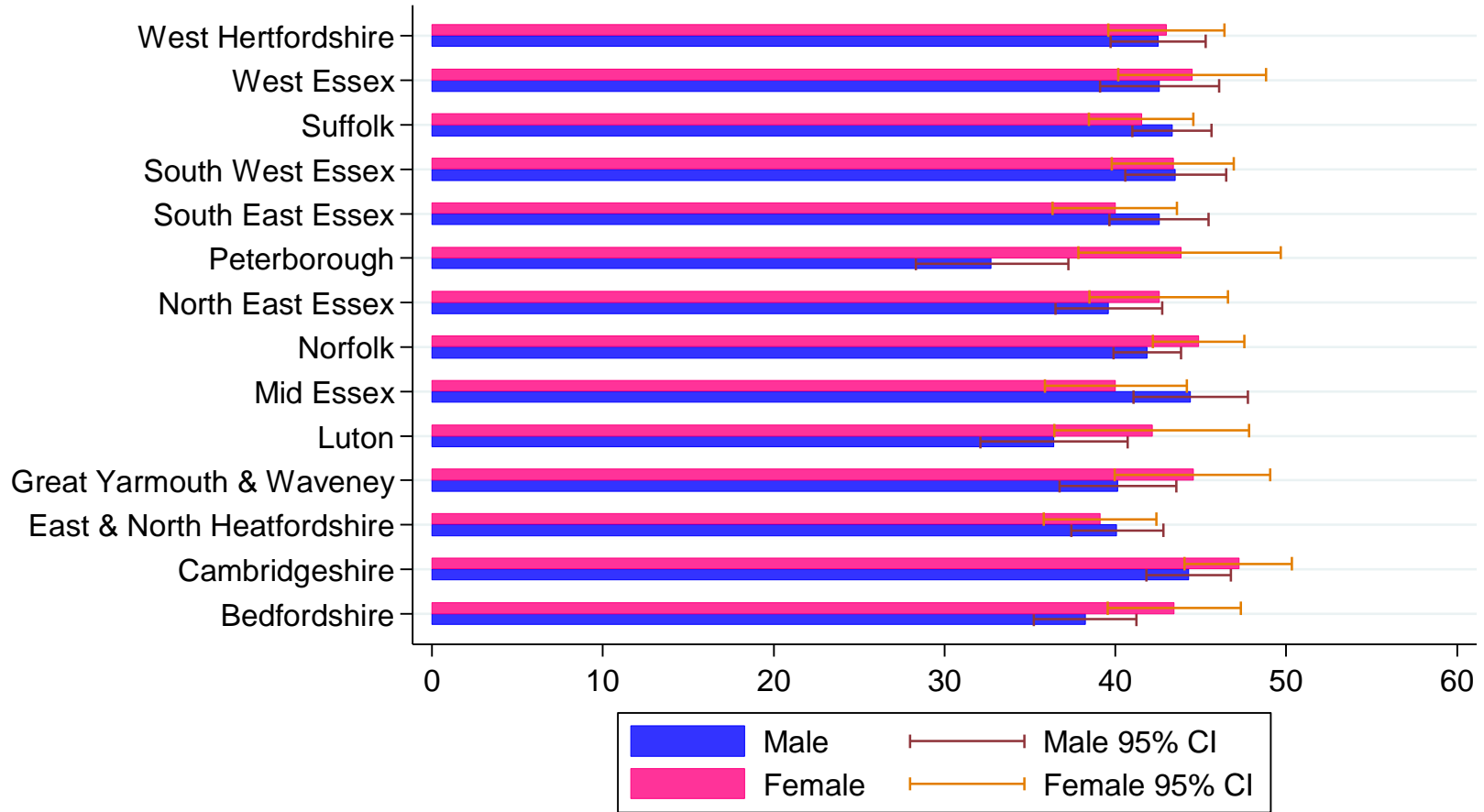
Six month cancer survival, East of England, 1998-2006, by sex and PCT

East of England	Male					Female				
	No. at risk	Deaths	Cumulative Survival (%)	95% CI		No. at risk	Deaths	Cumulative Survival (%)	95% CI	
				Lower	Upper				Lower	Upper
PCT										
BEDFORDSHIRE	1,032	627	38.24	35.23	41.23	639	354	43.47	39.54	47.33
CAMBRIDGESHIRE	1,591	874	44.31	41.83	46.76	999	514	47.24	44.06	50.35
EAST AND NORTH HERTFORDSHIRE	1,295	766	40.11	37.41	42.80	872	517	39.11	35.80	42.40
GREAT YARMOUTH AND WAVENEY	814	478	40.18	36.75	43.58	467	255	44.56	39.95	49.05
LUTON	495	307	36.40	32.10	40.72	296	168	42.18	36.44	47.81
MID ESSEX	864	470	44.44	41.05	47.77	546	322	40.05	35.87	44.18
NORFOLK	2,452	1,404	41.88	39.90	43.84	1,371	733	44.90	42.19	47.56
NORTH EAST ESSEX	970	575	39.62	36.49	42.73	588	330	42.58	38.49	46.60
PETERBOROUGH	434	286	32.75	28.31	37.26	275	152	43.85	37.84	49.68
SOUTH EAST ESSEX	1,140	643	42.56	39.64	45.45	732	424	39.98	36.33	43.61
SOUTH WEST ESSEX	1,105	613	43.55	40.58	46.49	754	419	43.39	39.78	46.95
SUFFOLK	1,788	999	43.31	40.98	45.62	1,030	591	41.54	38.47	44.57
WEST ESSEX	781	442	42.61	39.09	46.09	519	283	44.54	40.17	48.81
WEST HERTFORDSHIRE	1,253	708	42.52	39.73	45.27	836	469	43.01	39.60	46.38



Six month survival: East of England

East of England



Six month survival: London

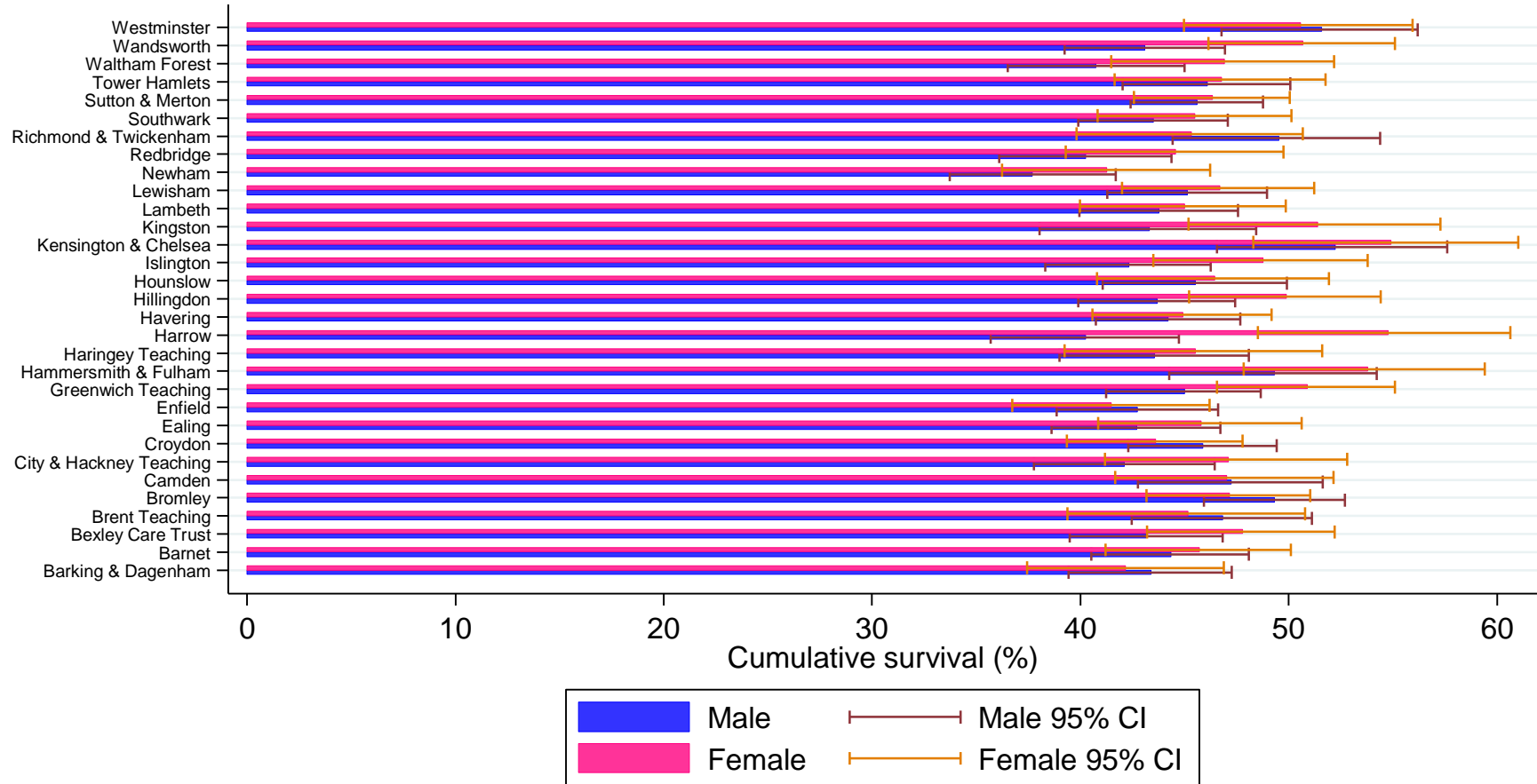
Six month cancer survival, London, 1998-2006, by sex and PCT

London	Male					Female				
	No. at risk	Deaths	Cumulative Survival (%)	95% CI		No. at risk	Deaths	Cumulative Survival (%)	95% CI	
				Lower	Upper				Lower	Upper
PCT										
BARKING AND DAGENHAM	630	350	43.38	39.43	47.27	431	244	42.20	37.43	46.88
BARNET	677	371	44.35	40.53	48.09	486	261	45.71	41.20	50.11
BEXLEY CARE TRUST	716	400	43.18	39.49	46.82	481	247	47.78	43.20	52.21
BRENT TEACHING	519	272	46.85	42.46	51.12	304	162	45.18	39.38	50.80
BROMLEY	858	426	49.35	45.92	52.69	633	328	47.15	43.16	51.03
CAMDEN	496	257	47.27	42.76	51.64	358	186	47.02	41.68	52.16
CITY AND HACKNEY TEACHING	503	289	42.14	37.78	46.44	288	150	47.11	41.18	52.81
CROYDON	767	407	45.90	42.29	49.43	541	301	43.61	39.36	47.78
EALING	582	329	42.70	38.61	46.72	410	217	45.81	40.84	50.63
ENFIELD	637	359	42.76	38.85	46.61	426	244	41.50	36.72	46.21
GREENWICH TEACHING	708	381	44.99	41.24	48.67	528	257	50.92	46.55	55.11
HAMMERSMITH AND FULHAM	392	196	49.34	44.25	54.23	289	132	53.82	47.85	59.41
HARINGEY TEACHING	470	260	43.59	39.00	48.08	251	135	45.54	39.24	51.62
HARROW	461	272	40.24	35.70	44.72	262	117	54.81	48.53	60.65
HAVERING	804	442	44.24	40.75	47.67	527	285	44.94	40.59	49.18
HILLINGDON	680	375	43.70	39.89	47.44	465	228	49.92	45.22	54.42
HOUNSLOW	498	267	45.55	41.08	49.91	315	165	46.46	40.79	51.93
ISLINGTON	602	343	42.32	38.31	46.26	369	186	48.76	43.51	53.80
KENSINGTON AND CHELSEA	323	151	52.23	46.55	57.60	239	106	54.90	48.30	61.01
KINGSTON	356	198	43.31	38.04	48.45	268	128	51.41	45.19	57.28
LAMBETH	670	370	43.79	39.96	47.56	399	215	45.00	39.99	49.87
LEWISHAM	667	358	45.16	41.28	48.95	455	240	46.68	41.99	51.22
NEWHAM	577	356	37.71	33.73	41.69	378	218	41.27	36.23	46.24
REDBRIDGE	551	324	40.25	36.10	44.37	355	193	44.59	39.30	49.74
RICHMOND AND TWICKENHAM	393	195	49.52	44.43	54.40	331	177	45.32	39.80	50.67
SOUTHWARK	749	416	43.52	39.90	47.08	451	241	45.53	40.81	50.12
SUTTON AND MERTON	969	514	45.62	42.41	48.78	700	368	46.35	42.57	50.04
TOWER HAMLETS	598	317	46.10	42.02	50.08	375	198	46.78	41.63	51.77
WALTHAM FOREST	528	308	40.78	36.52	44.99	341	178	46.93	41.48	52.18
WANDSWORTH	653	365	43.11	39.24	46.93	491	237	50.71	46.14	55.09
WESTMINSTER	446	211	51.60	46.78	56.19	322	157	50.59	44.96	55.95



Six month survival: London

London



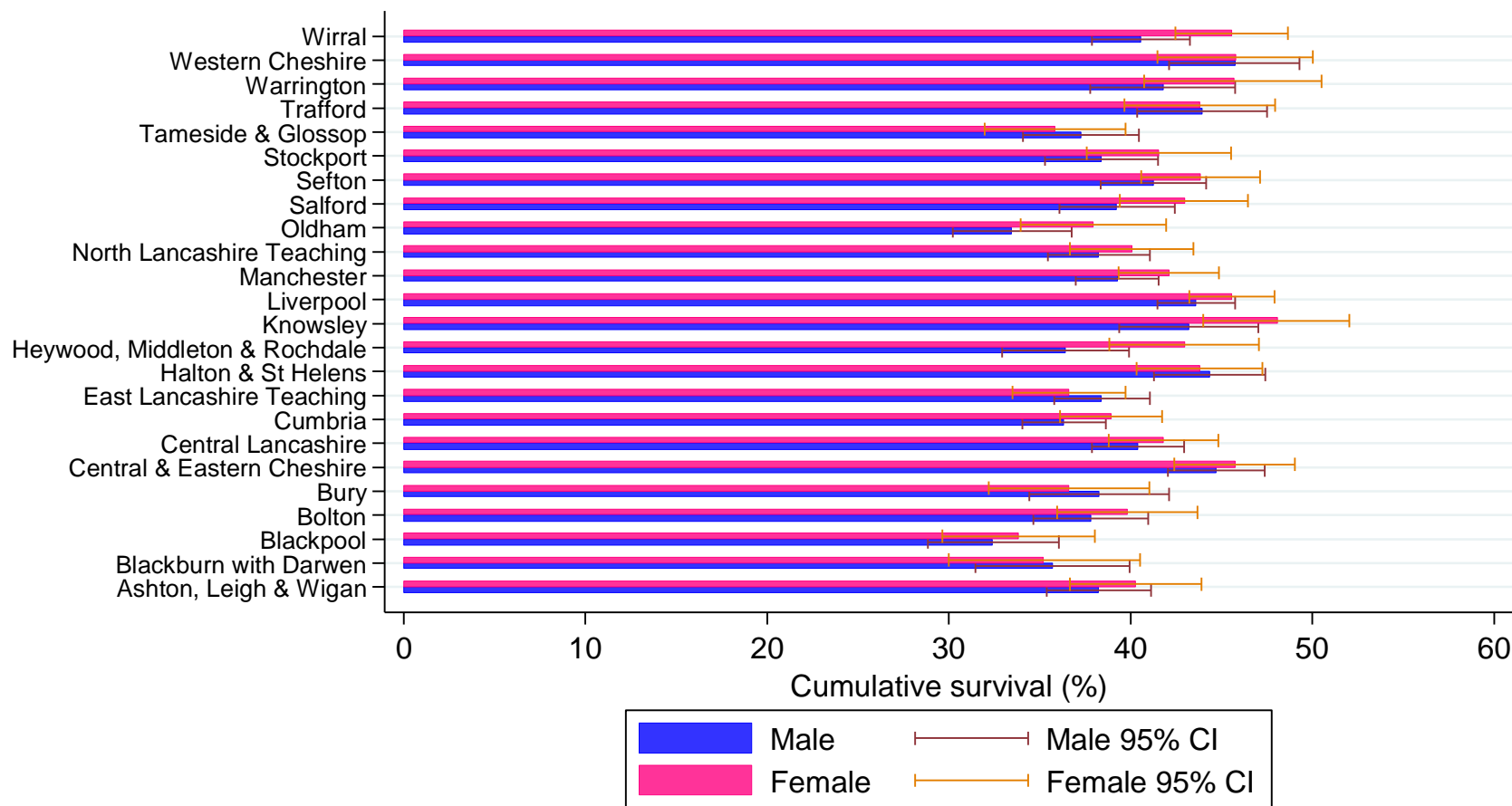
Six month survival: North West

Six month cancer survival, North West, 1998-2006, by sex and PCT

North West PCT	Male					Female				
	No. at	Deaths	Cumulative	95% CI		No. at	Deaths	Cumulative	95% CI	
	risk		Survival (%)	Lower	Upper	risk		Survival (%)	Lower	Upper
ASHTON, LEIGH AND WIGAN	1,149	692	38.26	35.39	41.11	732	428	40.30	36.67	43.89
BLACKBURN WITH DARWEN	506	317	35.70	31.46	39.95	320	205	35.23	29.99	40.51
BLACKPOOL	663	439	32.42	28.83	36.06	499	324	33.82	29.65	38.04
BOLTON	934	568	37.81	34.65	40.96	638	375	39.83	35.96	43.68
BURY	626	379	38.28	34.42	42.13	466	291	36.60	32.18	41.02
CENTRAL AND EASTERN CHESHIRE	1,365	743	44.73	42.04	47.37	892	474	45.76	42.41	49.04
CENTRAL LANCASHIRE	1,462	856	40.42	37.86	42.95	1,055	602	41.82	38.78	44.82
CUMBRIA	1,722	1,082	36.34	34.05	38.64	1,205	719	38.92	36.12	41.72
EAST LANCASHIRE TEACHING	1,337	812	38.42	35.78	41.05	934	585	36.61	33.49	39.72
HALTON AND ST HELENS	1,038	568	44.37	41.29	47.40	807	447	43.82	40.34	47.25
HEYWOOD, MIDDLETON AND ROCHDALE	748	470	36.42	32.94	39.90	577	319	42.98	38.82	47.07
KNOWSLEY	653	365	43.23	39.36	47.04	606	309	48.08	44.00	52.04
LIVERPOOL	2,122	1,180	43.62	41.48	45.74	1,777	948	45.59	43.23	47.92
MANCHESTER	1,797	1,077	39.27	36.98	41.54	1,267	720	42.11	39.34	44.85
NORTH LANCASHIRE TEACHING	1,180	716	38.25	35.44	41.06	823	482	40.07	36.65	43.46
OLDHAM	820	538	33.47	30.21	36.74	577	350	37.96	33.94	41.97
SALFORD	940	559	39.26	36.08	42.42	789	437	42.96	39.41	46.45
SEFTON	1,128	655	41.26	38.36	44.15	902	500	43.88	40.59	47.12
STOCKPORT	966	583	38.41	35.29	41.51	606	348	41.58	37.58	45.52
TAMESIDE AND GLOSSOP	905	557	37.28	34.09	40.47	609	381	35.85	31.98	39.73
TRAFFORD	756	415	43.97	40.35	47.52	569	312	43.84	39.65	47.94
WARRINGTON	599	344	41.78	37.77	45.74	403	217	45.70	40.75	50.52
WESTERN CHESHIRE	758	404	45.75	42.12	49.29	532	283	45.82	41.49	50.04
WIRRAL	1,295	760	40.56	37.86	43.25	1,013	544	45.59	42.46	48.65

Six month survival: North West

North West



Six month survival: North East

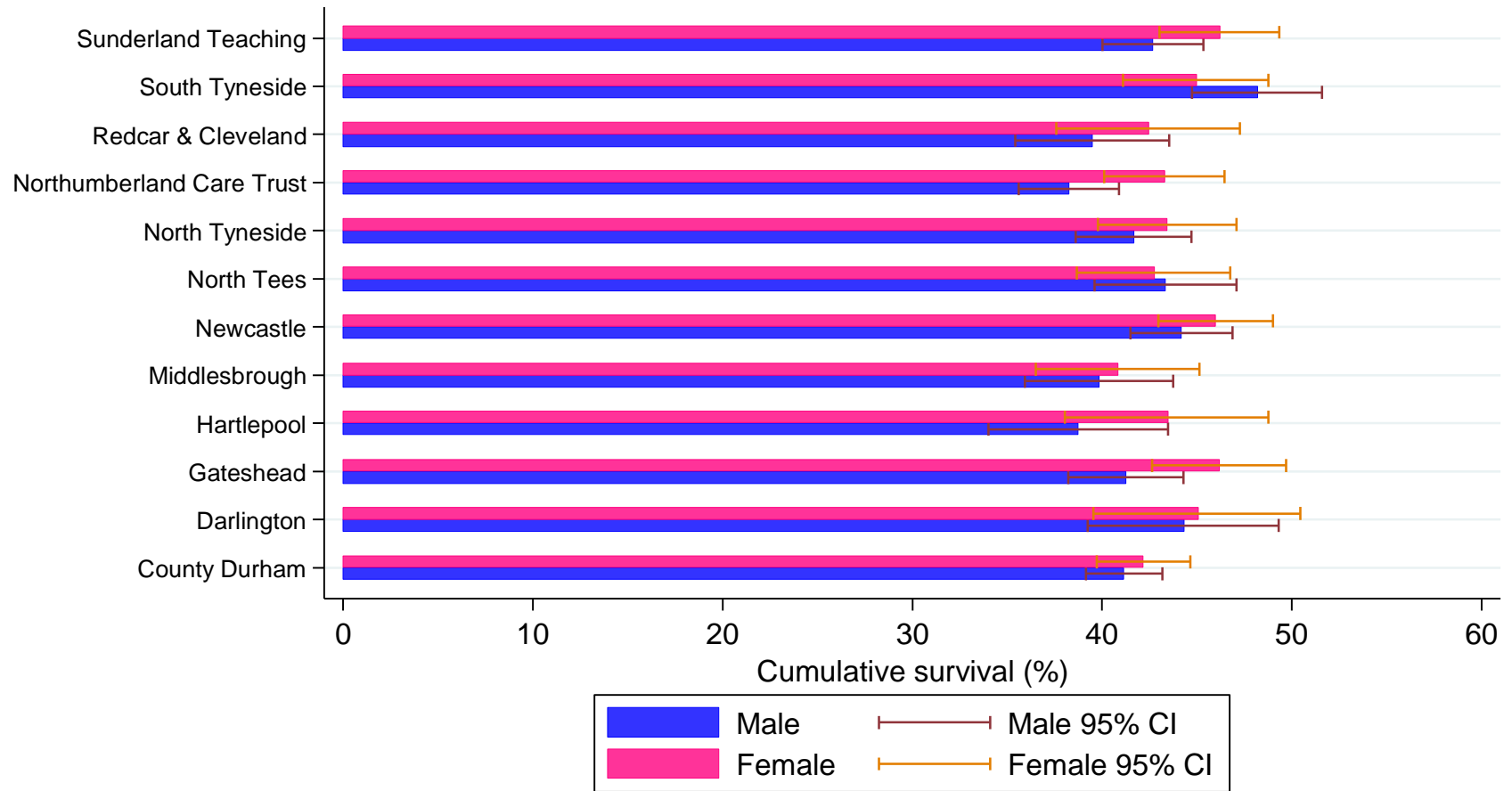
Six month cancer survival, North East, 1998-2006, by sex and PCT

North East PCT	Male					Female				
	No. at risk	Deaths	Cumulative Survival (%)	95% CI		No. at risk	Deaths	Cumulative Survival (%)	95% CI	
				Lower	Upper				Lower	Upper
COUNTY DURHAM	2,322	1,344	41.18	39.15	43.19	1,589	904	42.19	39.72	44.64
DARLINGTON	384	209	44.33	39.23	49.30	325	175	45.08	39.54	50.46
GATESHEAD	1,032	598	41.26	38.22	44.28	776	413	46.20	42.63	49.69
HARTLEPOOL	419	251	38.76	34.02	43.48	335	185	43.47	38.03	48.78
MIDDLESBROUGH	625	367	39.86	35.94	43.75	509	296	40.85	36.51	45.14
NEWCASTLE	1,335	734	44.21	41.51	46.89	1,071	566	46.01	42.96	49.02
NORTH TEES	679	380	43.37	39.59	47.09	586	329	42.75	38.67	46.77
NORTH TYNESIDE	1,025	589	41.67	38.61	44.70	727	403	43.46	39.78	47.08
NORTHUMBERLAND CARE TRUST	1,343	814	38.26	35.62	40.89	955	534	43.32	40.12	46.46
REDCAR AND CLEVELAND	575	341	39.50	35.43	43.53	411	232	42.47	37.60	47.26
SOUTH TYNESIDE	837	425	48.22	44.75	51.61	667	360	44.98	41.12	48.76
SUNDERLAND TEACHING	1,352	763	42.69	40.01	45.34	982	519	46.22	43.03	49.34



Six month survival: North East

North East



Six month survival: South East

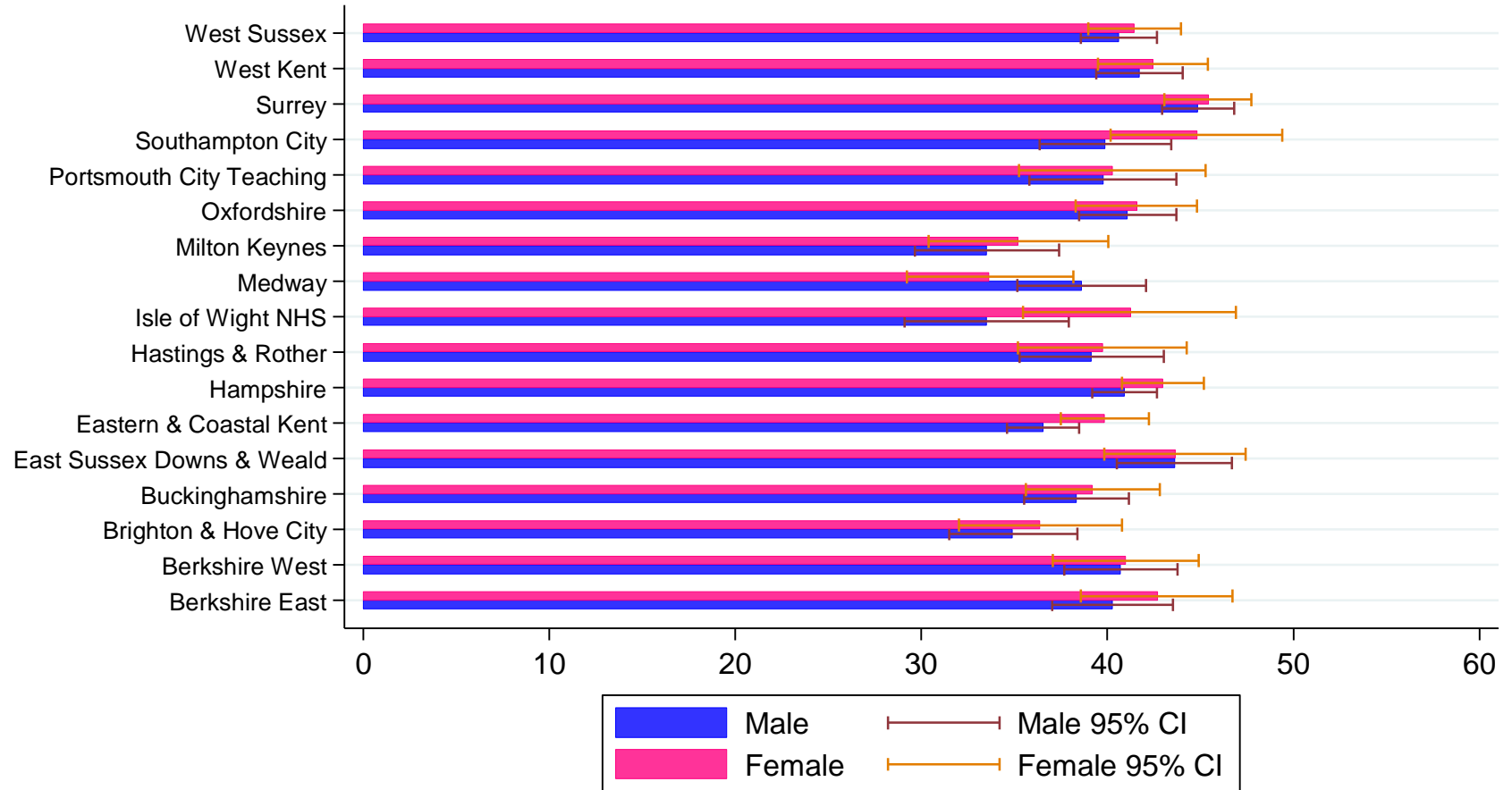
Six month cancer survival, South East, 1998-2006, by sex and PCT

South East PCT	Male					Female				
	No. at risk	Deaths	Cumulative Survival (%)	95% CI		No. at risk	Deaths	Cumulative Survival (%)	95% CI	
				Lower	Upper				Lower	Upper
BERKSHIRE EAST	904	529	40.29	37.03	43.51	580	327	42.68	38.58	46.71
BERKSHIRE WEST	1,021	596	40.73	37.67	43.77	621	358	41.00	37.06	44.91
BRIGHTON AND HOVE CITY	750	480	34.92	31.48	38.38	470	296	36.39	32.01	40.77
BUCKINGHAMSHIRE	1,160	706	38.34	35.51	41.16	729	434	39.22	35.62	42.81
EAST SUSSEX DOWNS AND WEALD	1,021	565	43.63	40.52	46.68	668	370	43.67	39.83	47.44
EASTERN AND COASTAL KENT	2,409	1,500	36.54	34.59	38.49	1,657	985	39.86	37.48	42.23
HAMPSHIRE	3,118	1,811	40.92	39.17	42.67	1,999	1,119	42.99	40.78	45.18
HASTINGS AND ROTHER	618	371	39.16	35.27	43.03	455	270	39.75	35.19	44.26
ISLE OF WIGHT NHS	450	295	33.48	29.10	37.92	284	166	41.24	35.46	46.92
MEDWAY	772	467	38.63	35.16	42.09	438	285	33.65	29.20	38.16
MILTON KEYNES	577	380	33.50	29.65	37.40	389	245	35.20	30.39	40.05
OXFORDSHIRE	1,406	814	41.10	38.49	43.70	895	514	41.57	38.29	44.82
PORTSMOUTH CITY TEACHING	596	354	39.78	35.80	43.72	386	223	40.29	35.25	45.27
SOUTHAMPTON CITY	746	445	39.90	36.36	43.42	453	246	44.84	40.16	49.41
SURREY	2,595	1,405	44.89	42.94	46.82	1,801	961	45.42	43.07	47.74
WEST KENT	1,788	1,023	41.73	39.41	44.04	1,100	620	42.46	39.48	45.40
WEST SUSSEX	2,267	1,317	40.62	38.56	42.67	1,561	897	41.47	38.98	43.94



Six month survival: South East

South East



Six month survival: South West

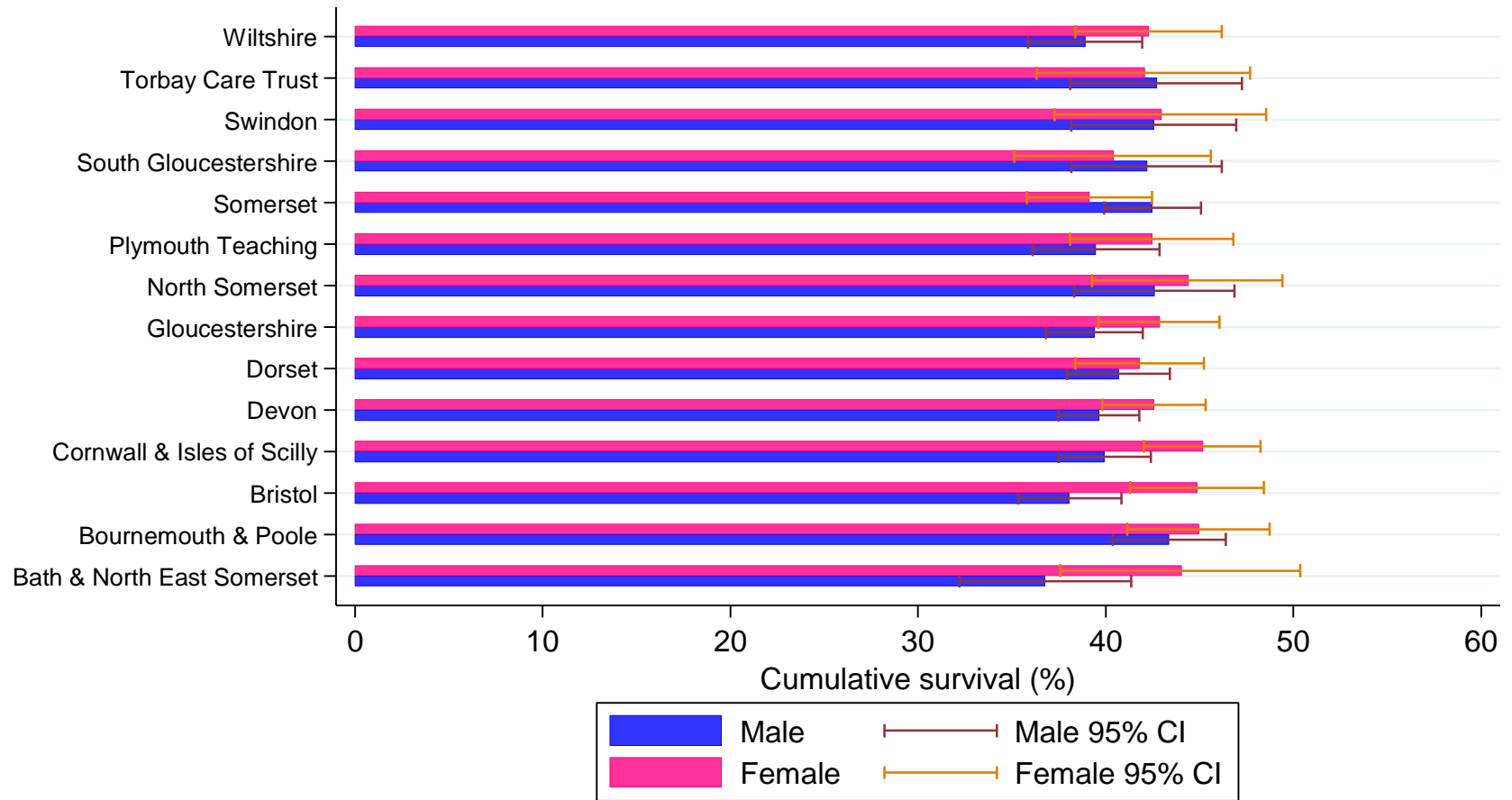
Six month cancer survival, South West, 1998-2006, by sex and PCT

South West	Male					Female				
	No. at risk	Deaths	Cumulative Survival (%)	95% CI		No. at risk	Deaths	Cumulative Survival (%)	95% CI	
				Lower	Upper				Lower	Upper
PCT										
BATH AND NORTH EAST SOMERSET	437	271	36.79	32.20	41.37	237	130	44.08	37.59	50.36
BOURNEMOUTH AND POOLE	1,071	596	43.40	40.38	46.39	680	367	44.99	41.16	48.74
BRISTOL	1,231	748	38.08	35.33	40.83	764	414	44.90	41.30	48.43
CORNWALL AND ISLES OF SCILLY	1,581	932	39.96	37.51	42.40	1,012	546	45.18	42.05	48.25
DEVON	2,046	1,216	39.65	37.50	41.79	1,265	718	42.61	39.84	45.34
DORSET	1,286	745	40.71	37.96	43.43	809	463	41.83	38.37	45.25
GLOUCESTERSHIRE	1,431	847	39.41	36.83	41.98	929	521	42.86	39.62	46.07
NORTH SOMERSET	524	297	42.62	38.32	46.85	376	206	44.42	39.29	49.42
PLYMOUTH TEACHING	820	489	39.49	36.10	42.87	513	289	42.50	38.12	46.80
SOMERSET	1,452	822	42.51	39.93	45.07	842	506	39.14	35.80	42.46
SOUTH GLOUCESTERSHIRE	596	338	42.22	38.17	46.20	342	202	40.40	35.14	45.60
SWINDON	499	281	42.60	38.16	46.96	296	166	43.00	37.29	48.57
TORBAY CARE TRUST	456	258	42.73	38.12	47.25	294	168	42.07	36.33	47.69
WILTSHIRE	1,015	610	38.92	35.87	41.95	630	358	42.33	38.40	46.20



Six month survival: South West

South West



Six month survival: Yorkshire and the Humber

Six month cancer survival, Yorkshire and the Humber, 1998-2006, by sex and PCT

Yorkshire and the Humber PCT	Male					Female				
	No. at risk	Deaths	Cumulative Survival (%)	95% CI		No. at risk	Deaths	Cumulative Survival (%)	95% CI	
				Lower	Upper				Lower	Upper
BARNSELY	934	578	37.09	33.95	40.22	645	381	40.07	36.23	43.87
BRADFORD AND AIREDALE TEACHING	1,653	1,001	38.46	36.08	40.83	1,212	670	43.42	40.57	46.24
CALDERDALE	693	416	38.97	35.29	42.63	465	273	40.29	35.76	44.77
DONCASTER	1,307	770	39.90	37.20	42.59	868	483	43.26	39.89	46.58
EAST RIDING OF YORKSHIRE	1,215	651	45.66	42.81	48.46	775	391	48.40	44.78	51.93
HULL TEACHING	1,244	727	40.72	37.95	43.47	838	441	46.58	43.13	49.95
KIRKLEES	1,284	750	41.04	38.32	43.74	940	535	42.40	39.19	45.56
LEEDS	2,847	1,598	43.07	41.23	44.90	2,246	1,221	44.76	42.67	46.82
NORTH EAST LINCOLNSHIRE	591	349	40.05	36.05	44.02	352	208	40.01	34.83	45.14
NORTH LINCOLNSHIRE	603	361	38.90	34.94	42.83	378	226	38.82	33.82	43.78
NORTH YORKSHIRE AND YORK	2,414	1,372	41.97	39.96	43.96	1,673	883	46.26	43.83	48.66
ROTHERHAM	1,002	613	37.73	34.69	40.77	636	374	40.28	36.41	44.12
SHEFFIELD	1,984	1,223	37.27	35.12	39.43	1,373	768	42.98	40.31	45.62
WAKEFIELD DISTRICT	1,257	722	41.63	38.86	44.37	972	527	44.55	41.35	47.69



Six month survival: Yorkshire and the Humber

Yorkshire and the Humber



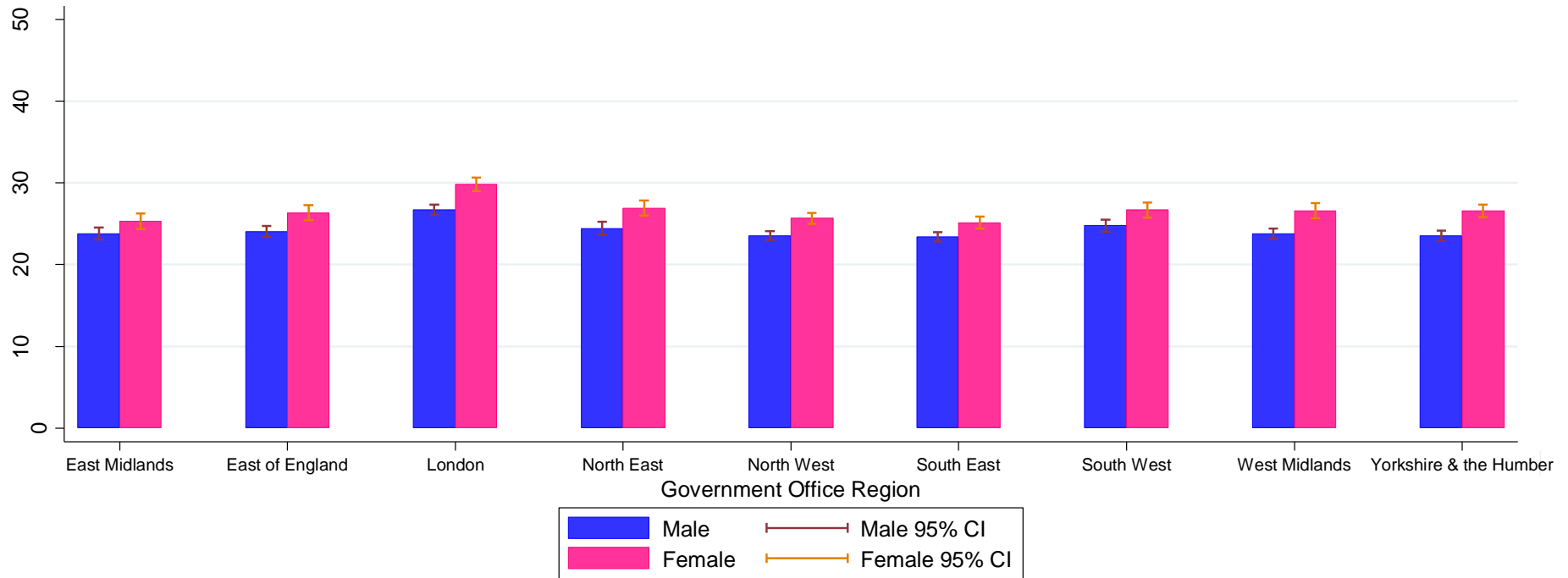
One year survival: England

One year cancer survival, England, 1998-2006, by sex and Government Office Region

Government Office Region	Male					Female				
	No. at risk	Deaths	Cumulative Survival (%)	95% CI		No. at risk	Deaths	Cumulative Survival (%)	95% CI	
				Lower	Upper				Lower	Upper
East Midlands	13,561	10,008	23.80	23.06	24.54	8,341	5,992	25.29	24.33	26.27
East of England	16,014	11,789	24.06	23.38	24.74	9,925	7,028	26.35	25.46	27.26
London	18,480	13,116	26.71	26.05	27.37	12,469	8,460	29.82	28.99	30.65
North East	11,928	8,738	24.43	23.64	25.22	8,933	6,318	26.94	25.99	27.89
North West	25,373	18,830	23.55	23.01	24.09	18,519	13,300	25.67	25.02	26.32
South East	22,204	16,475	23.42	22.84	23.99	14,488	10,477	25.15	24.42	25.88
South West	14,439	10,507	24.78	24.06	25.51	8,987	6,387	26.69	25.75	27.64
West Midlands	16,821	12,436	23.78	23.12	24.44	9,676	6,857	26.61	25.71	27.53
Yorkshire and the Humber	19,039	14,131	23.53	22.91	24.15	13,377	9,485	26.59	25.82	27.37
Total	157,859	116,030				104,715	74,304			



One year survival: England



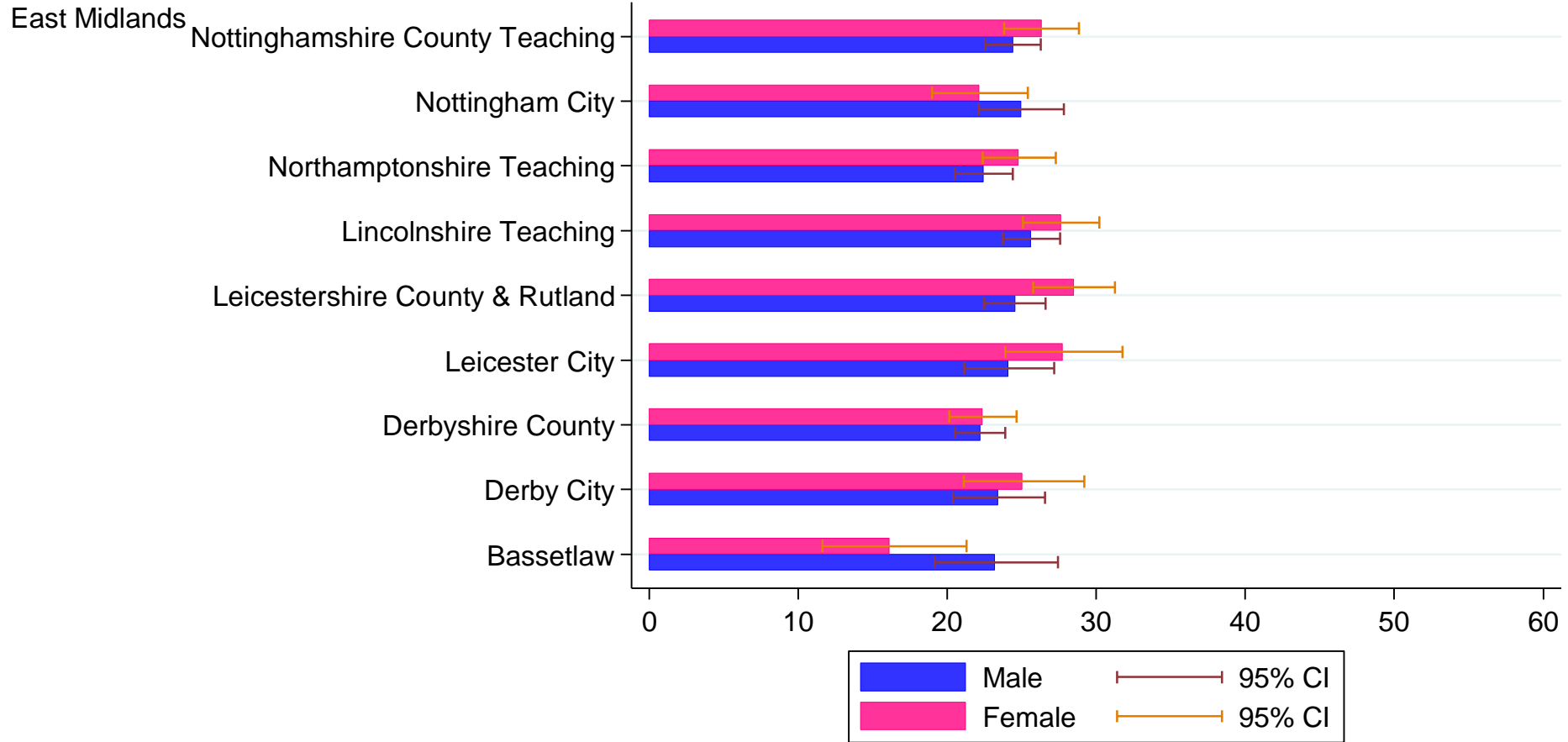
One year survival: East Midlands

One year cancer survival, East Midlands, 1998-2006, by sex and PCT

East Midlands	Male					Female				
	No. at risk	Deaths	Cumulative Survival (%)	95% CI		No. at risk	Deaths	Cumulative Survival (%)	95% CI	
PCT				Lower	Upper				Lower	Upper
BASSETLAW	419	314	23.17	19.16	27.43	240	193	16.11	11.6	21.28
DERBY CITY	758	567	23.4	20.39	26.54	484	346	25.04	21.09	29.18
DERBYSHIRE COUNTY	2,452	1,859	22.18	20.51	23.89	1,396	1,050	22.36	20.14	24.65
LEICESTER CITY	839	613	24.1	21.15	27.16	543	374	27.76	23.9	31.74
LEICESTERSHIRE COUNTY AND RUTLAND	1,795	1,309	24.52	22.48	26.6	1,113	765	28.48	25.77	31.24
LINCOLNSHIRE TEACHING	2,176	1,552	25.63	23.74	27.55	1,263	878	27.61	25.09	30.19
NORTHAMPTONSHIRE TEACHING	1,887	1,426	22.42	20.51	24.38	1,242	905	24.79	22.35	27.29
NOTTINGHAM CITY	951	694	24.92	22.13	27.8	683	512	22.1	18.96	25.4
NOTTINGHAMSHIRE COUNTY TEACHING	2,199	1,605	24.38	22.55	26.25	1,303	918	26.29	23.82	28.81



One year survival: East Midlands



One year survival: West Midlands

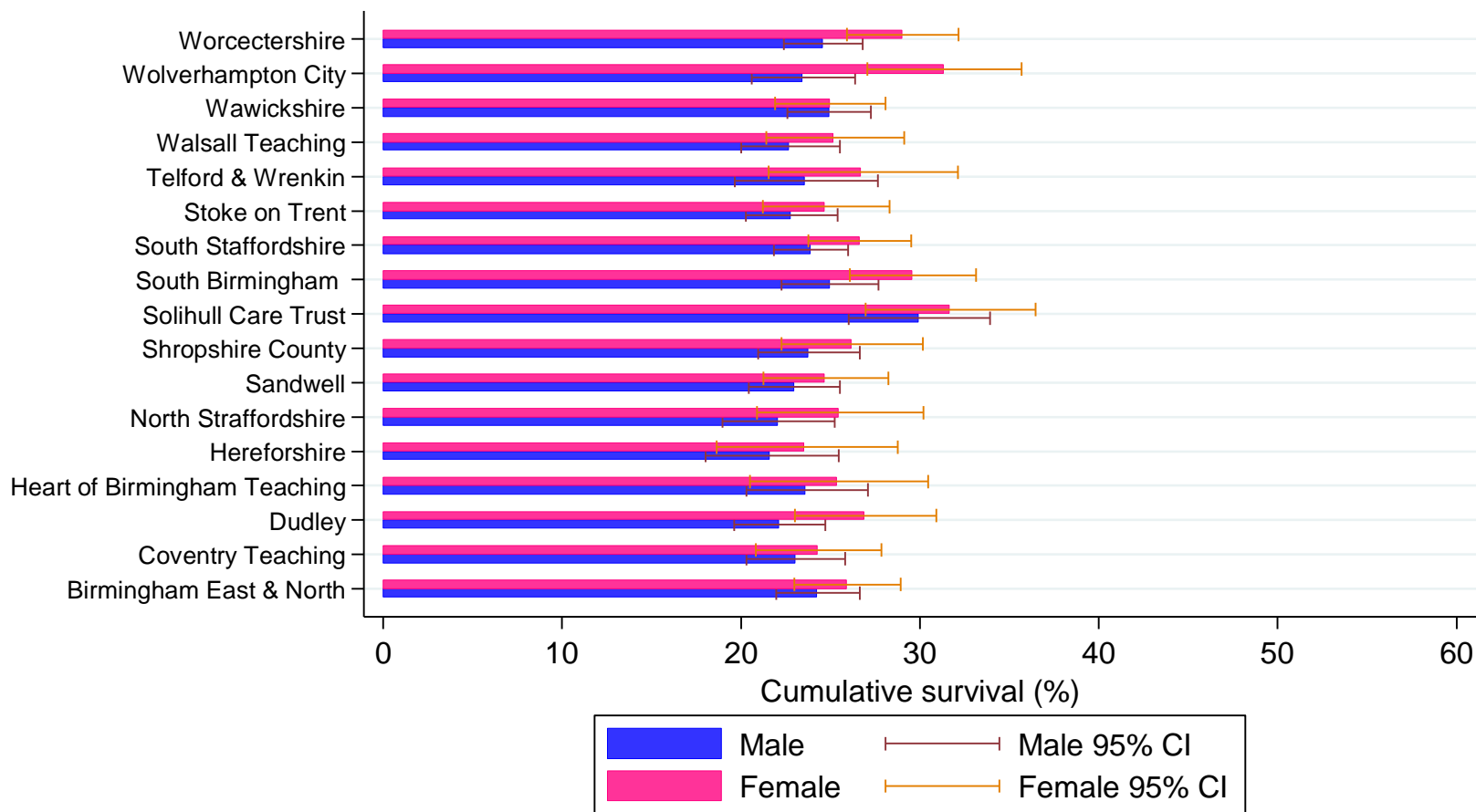
One year cancer survival, West Midlands, 1998-2006, by sex and PCT

West Midlands	Male					Female				
	No. at risk	Deaths	Cumulative Survival (%)	95% CI		No. at risk	Deaths	Cumulative Survival (%)	95% CI	
				Lower	Upper				Lower	Upper
PCT										
BIRMINGHAM EAST AND NORTH	1,373	1,004	24.27	21.96	26.64	881	632	25.91	22.98	28.93
COVENTRY TEACHING	933	700	23.02	20.31	25.84	603	444	24.28	20.84	27.86
DUDLEY	1,064	808	22.12	19.62	24.72	517	365	26.91	23.03	30.92
HEART OF BIRMINGHAM TEACHING	642	475	23.62	20.31	27.09	309	223	25.34	20.49	30.47
HEREFORDSHIRE	494	377	21.63	18.02	25.47	289	212	23.53	18.63	28.77
NORTH STAFFORDSHIRE	704	537	22.03	18.97	25.23	360	258	25.45	20.91	30.22
SANDWELL	1,119	831	22.94	20.44	25.54	619	450	24.67	21.25	28.23
SHROPSHIRE COUNTY	909	673	23.75	20.96	26.64	515	365	26.14	22.28	30.16
SOLIHULL CARE TRUST	552	371	29.92	26.01	33.93	395	258	31.66	26.96	36.46
SOUTH BIRMINGHAM	1,029	751	24.93	22.27	27.68	676	461	29.58	26.09	33.14
SOUTH STAFFORDSHIRE	1,727	1,272	23.90	21.85	26.00	978	691	26.61	23.78	29.52
STOKE ON TRENT	1,080	811	22.79	20.27	25.41	601	440	24.68	21.21	28.30
TELFORD AND WREKIN	473	346	23.56	19.66	27.66	290	204	26.72	21.56	32.14
WALSALL TEACHING	922	696	22.71	20.00	25.53	505	371	25.19	21.42	29.12
WARWICKSHIRE	1,386	1,011	24.91	22.60	27.28	794	577	24.95	21.91	28.09
WOLVERHAMPTON CITY	863	639	23.45	20.60	26.40	476	313	31.35	27.08	35.69
WORCESTERSHIRE	1,551	1,134	24.57	22.39	26.81	868	593	29.01	25.92	32.16



One year survival: West Midlands

West Midlands



One year survival: East of England

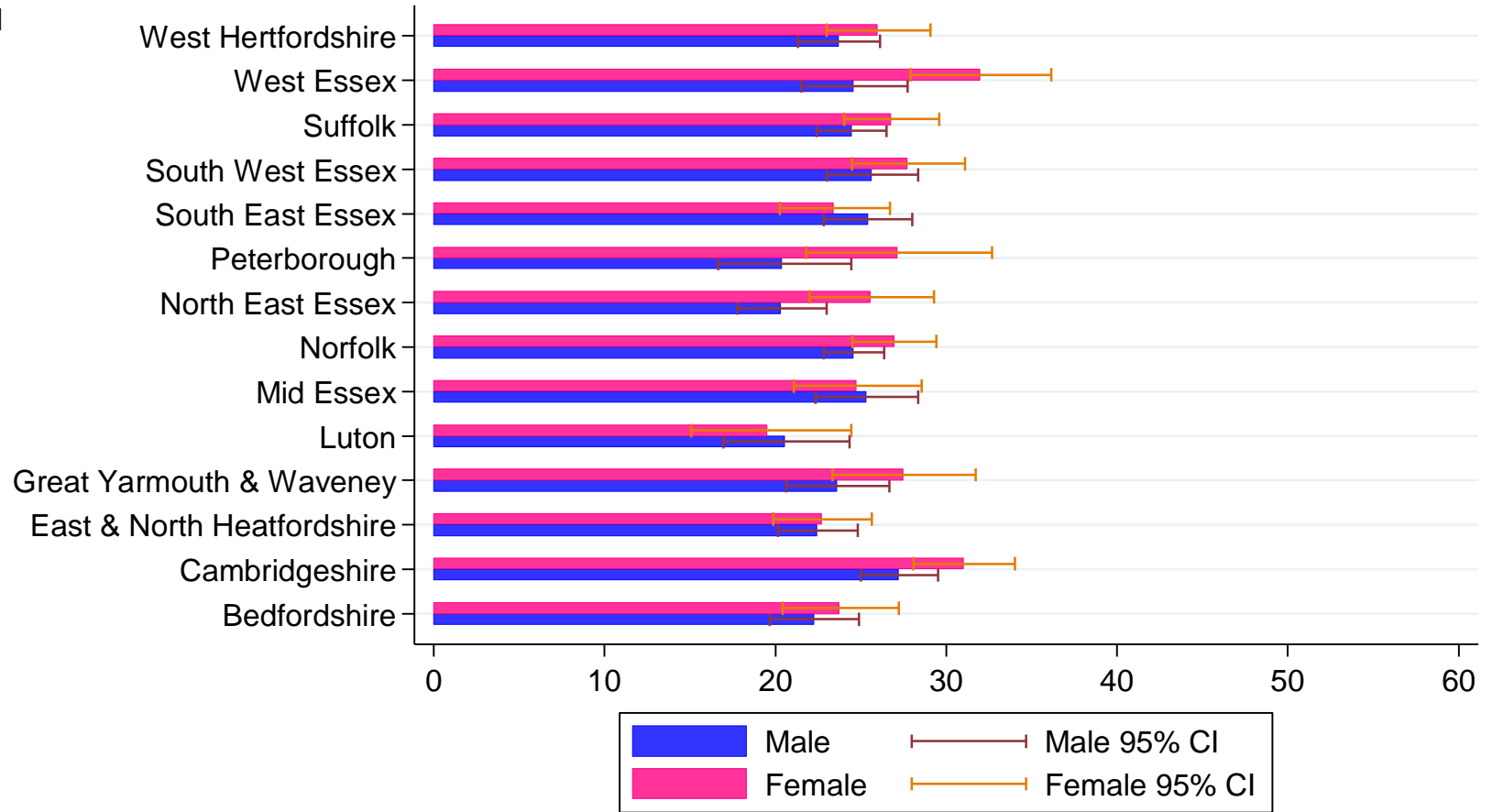
One year cancer survival, East of England, 1998-2006, by sex and PCT

East of England	Male					Female				
	No. at risk	Deaths	Cumulative Survival (%)	95% CI Lower Upper		No. at risk	Deaths	Cumulative Survival (%)	95% CI Lower Upper	
PCT										
BEDFORDSHIRE	1,032	778	22.24	19.67	24.90	639	470	23.74	20.42	27.22
CAMBRIDGESHIRE	1,591	1,122	27.23	25.00	29.51	999	659	31.03	28.08	34.03
EAST AND NORTH HERTFORDSHIRE	1,295	981	22.45	20.16	24.81	872	646	22.70	19.88	25.65
GREAT YARMOUTH AND WAVENEY	814	600	23.59	20.63	26.67	467	327	27.47	23.36	31.72
LUTON	495	378	20.52	16.95	24.33	296	229	19.54	15.07	24.44
MID ESSEX	864	620	25.30	22.34	28.35	546	398	24.74	21.09	28.55
NORFOLK	2,452	1,794	24.58	22.84	26.35	1,371	952	26.94	24.52	29.42
NORTH EAST ESSEX	970	746	20.32	17.77	23.01	588	422	25.58	22.02	29.28
PETERBOROUGH	434	335	20.40	16.64	24.44	275	193	27.11	21.81	32.67
SOUTH EAST ESSEX	1,140	825	25.39	22.83	28.02	732	530	23.41	20.26	26.71
SOUTH WEST ESSEX	1,105	796	25.65	23.04	28.34	754	526	27.75	24.49	31.09
SUFFOLK	1,788	1,313	24.43	22.41	26.50	1,030	732	26.77	24.03	29.58
WEST ESSEX	781	572	24.59	21.54	27.75	519	342	31.99	27.90	36.14
WEST HERTFORDSHIRE	1,253	929	23.68	21.31	26.13	836	602	25.99	22.99	29.08



One year survival: East of England

East of England



One year survival: London

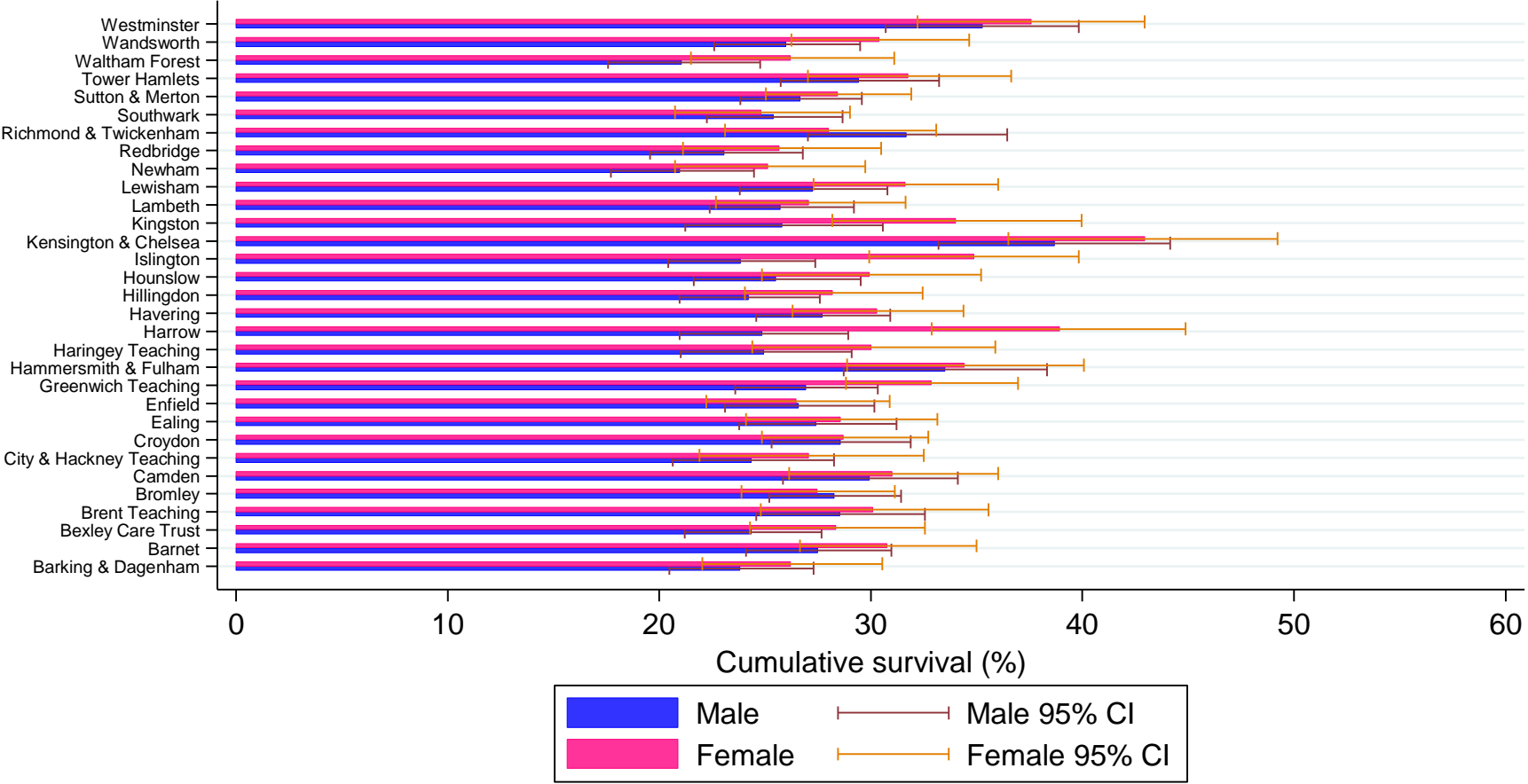
One year cancer survival, London, 1998-2006, by sex and PCT

London	Male					Female				
	No. at risk	Deaths	Cumulative Survival (%)	95% CI		No. at risk	Deaths	Cumulative Survival (%)	95% CI	
				Lower	Upper				Lower	Upper
PCT										
BARKING AND DAGENHAM	630	465	23.81	20.47	27.29	431	308	26.19	22.03	30.53
BARNET	677	477	27.47	24.08	30.97	486	329	30.77	26.64	35.00
BEXLEY CARE TRUST	716	524	24.36	21.19	27.66	481	334	28.36	24.29	32.55
BRENT TEACHING	519	360	28.52	24.59	32.56	304	202	30.10	24.80	35.56
BROMLEY	858	591	28.28	25.20	31.43	633	439	27.46	23.89	31.13
CAMDEN	496	336	29.94	25.85	34.12	358	238	31.02	26.14	36.01
CITY AND HACKNEY TEACHING	503	374	24.35	20.63	28.25	288	202	27.07	21.88	32.51
CROYDON	767	530	28.56	25.31	31.88	541	374	28.72	24.85	32.70
EALING	582	410	27.43	23.76	31.21	410	280	28.54	24.08	33.15
ENFIELD	637	454	26.57	23.10	30.15	426	301	26.46	22.21	30.89
GREENWICH TEACHING	708	498	26.90	23.58	30.32	528	348	32.86	28.82	36.95
HAMMERSMITH AND FULHAM	392	252	33.49	28.71	38.33	289	184	34.43	28.86	40.06
HARINGEY TEACHING	470	340	24.96	21.01	29.09	251	172	30.03	24.38	35.87
HARROW	461	340	24.85	20.95	28.94	262	156	38.90	32.87	44.87
HAVERING	804	566	27.71	24.58	30.91	527	355	30.29	26.30	34.37
HILLINGDON	680	498	24.20	20.96	27.58	465	321	28.17	24.03	32.45
HOUNSLOW	498	358	25.48	21.62	29.52	315	213	29.95	24.84	35.21
ISLINGTON	602	448	23.82	20.42	27.37	369	234	34.85	29.92	39.82
KENSINGTON AND CHELSEA	323	190	38.69	33.19	44.15	239	133	42.94	36.50	49.22
KINGSTON	356	255	25.78	21.21	30.57	268	169	34.03	28.18	39.95
LAMBETH	670	481	25.72	22.37	29.19	399	281	27.07	22.68	31.64
LEWISHAM	667	466	27.24	23.79	30.79	455	304	31.61	27.30	36.00
NEWHAM	577	447	20.99	17.70	24.48	378	274	25.12	20.74	29.73
REDBRIDGE	551	412	23.08	19.56	26.78	355	254	25.69	21.12	30.49
RICHMOND AND TWICKENHAM	393	260	31.68	27.02	36.44	331	229	28.00	23.10	33.08
SOUTHWARK	749	541	25.40	22.24	28.66	451	325	24.78	20.74	29.01
SUTTON AND MERTON	969	683	26.66	23.83	29.57	700	484	28.43	25.04	31.90
TOWER HAMLETS	598	410	29.43	25.73	33.21	375	250	31.78	27.02	36.63
WALTHAM FOREST	528	403	21.05	17.57	24.76	341	243	26.18	21.49	31.09
WANDSWORTH	653	469	25.99	22.60	29.50	491	328	30.40	26.24	34.64
WESTMINSTER	446	278	35.25	30.71	39.82	322	196	37.58	32.19	42.95



One year survival: London

London



One year survival: North East

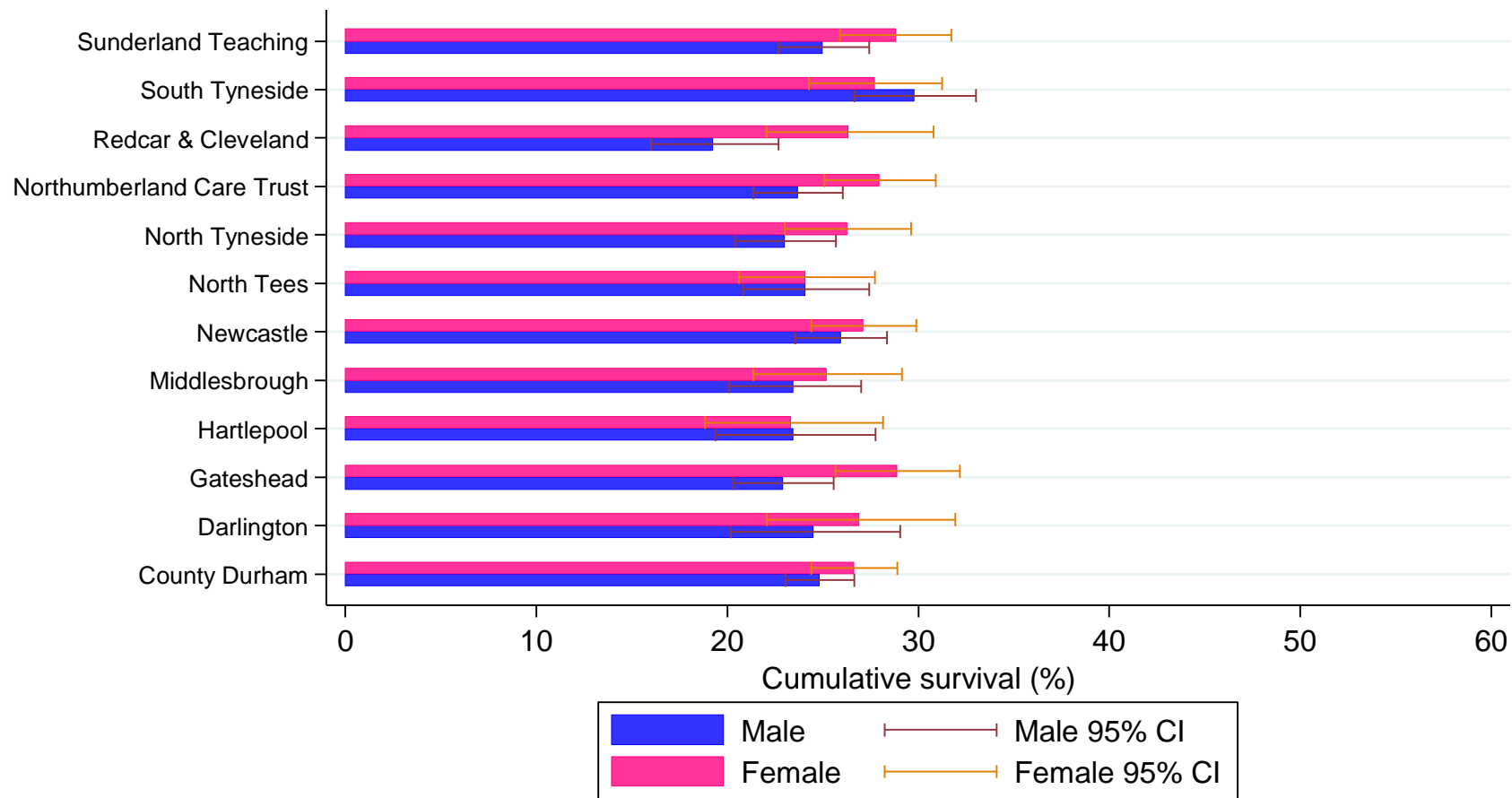
One year cancer survival, North East, 1998-2006, by sex and PCT

North East	Male					Female				
	No. at risk	Deaths	Cumulative Survival (%)	95% CI		No. at risk	Deaths	Cumulative Survival (%)	95% CI	
PCT				Lower	Upper				Lower	Upper
COUNTY DURHAM	2,322	1,694	24.83	23.05	26.66	1,589	1,130	26.63	24.41	28.89
DARLINGTON	384	279	24.51	20.20	29.06	325	230	26.92	22.09	31.95
GATESHEAD	1,032	774	22.88	20.30	25.56	776	539	28.88	25.66	32.17
HARTLEPOOL	419	309	23.45	19.37	27.76	335	247	23.34	18.83	28.15
MIDDLESBROUGH	625	458	23.47	20.09	27.01	509	369	25.16	21.37	29.13
NEWCASTLE	1,335	962	25.93	23.55	28.36	1,071	751	27.12	24.40	29.90
NORTH TEES	679	503	24.07	20.85	27.42	586	430	24.09	20.61	27.73
NORTH TYNESIDE	1,025	768	23.00	20.40	25.69	727	517	26.27	23.02	29.63
NORTHUMBERLAND CARE TRUST	1,343	994	23.66	21.36	26.04	955	671	27.96	25.09	30.91
REDCAR AND CLEVELAND	575	447	19.24	16.01	22.69	411	293	26.34	22.06	30.80
SOUTH TYNESIDE	837	568	29.81	26.66	33.03	667	465	27.71	24.26	31.26
SUNDERLAND TEACHING	1,352	982	25.01	22.67	27.43	982	676	28.80	25.91	31.74



One year survival: North East

North East



One year survival: North West

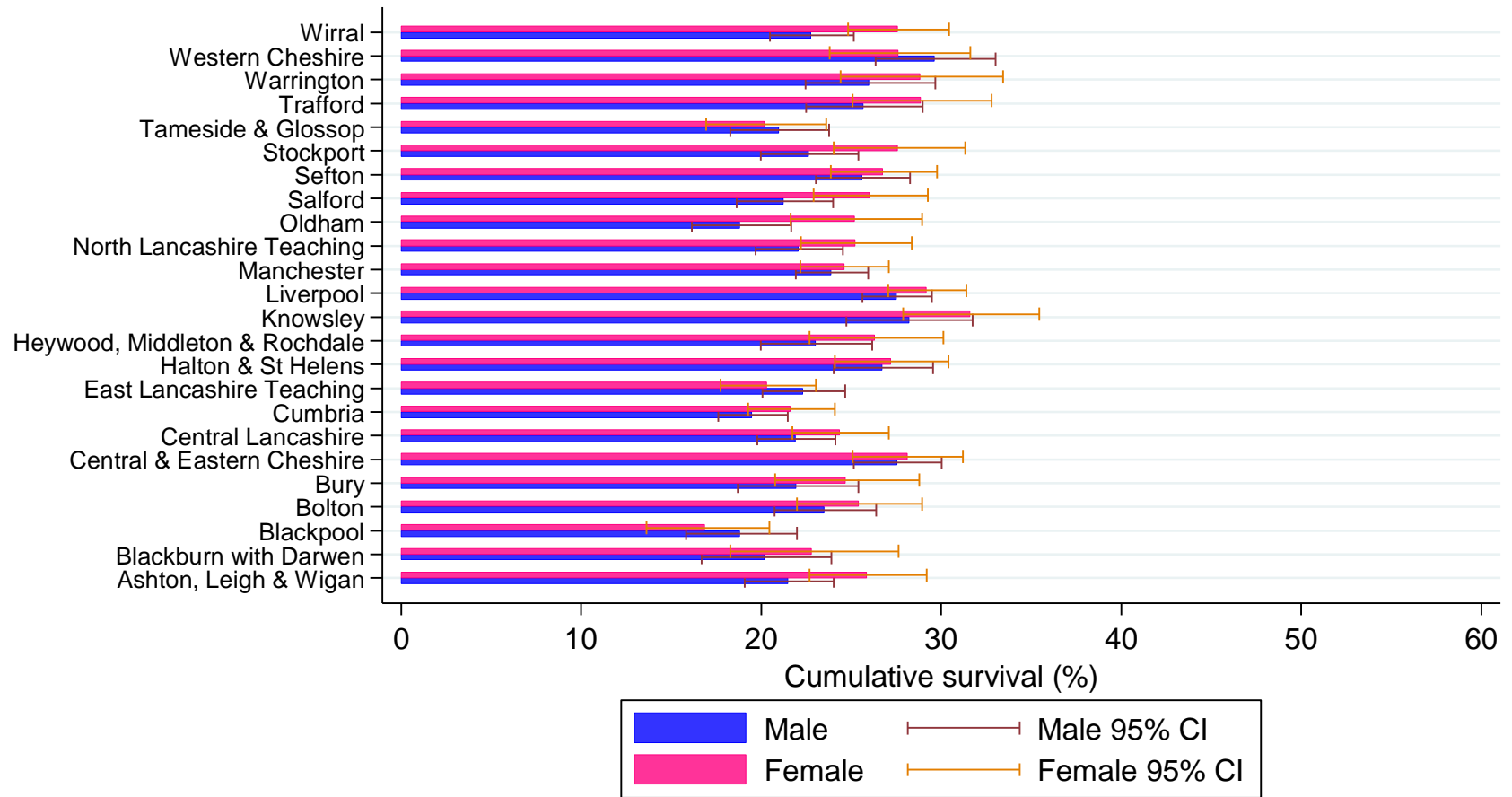
One year cancer survival, North West, 1998-2006, by sex and PCT

North West	Male					Female				
	No. at risk	Deaths	Cumulative Survival (%)	95% CI		No. at risk	Deaths	Cumulative Survival (%)	95% CI	
				Lower	Upper				Lower	Upper
PCT										
ASHTON, LEIGH AND WIGAN	1,149	865	21.50	19.08	24.02	732	525	25.89	22.68	29.20
BLACKBURN WITH DARWEN	506	389	20.16	16.68	23.89	320	242	22.80	18.28	27.64
BLACKPOOL	663	522	18.81	15.84	21.97	499	400	16.89	13.63	20.46
BOLTON	934	689	23.51	20.75	26.38	638	459	25.39	21.97	28.94
BURY	626	472	21.95	18.69	25.39	466	342	24.69	20.77	28.79
CENTRAL AND EASTERN CHESHIRE	1,365	961	27.56	25.15	30.01	892	616	28.10	25.08	31.19
CENTRAL LANCASHIRE	1,462	1,107	21.92	19.77	24.13	1,055	768	24.37	21.73	27.10
CUMBRIA	1,722	1,349	19.50	17.60	21.46	1,205	906	21.63	19.26	24.09
EAST LANCASHIRE TEACHING	1,337	1,010	22.32	20.07	24.66	934	727	20.32	17.74	23.03
HALTON AND ST HELENS	1,038	736	26.74	24.01	29.55	807	570	27.22	24.10	30.42
HEYWOOD, MIDDLETON AND ROCHDALE	748	563	23.00	19.98	26.15	577	406	26.33	22.67	30.12
KNOWSLEY	653	457	28.19	24.72	31.76	606	402	31.62	27.87	35.44
LIVERPOOL	2,122	1,500	27.53	25.61	29.49	1,777	1,218	29.20	27.05	31.39
MANCHESTER	1,797	1,333	23.91	21.91	25.95	1,267	919	24.59	22.16	27.09
NORTH LANCASHIRE TEACHING	1,180	893	22.08	19.69	24.55	823	592	25.23	22.21	28.35
OLDHAM	820	648	18.82	16.15	21.66	577	417	25.20	21.62	28.92
SALFORD	940	717	21.24	18.62	23.99	789	558	26.04	22.91	29.26
SEFTON	1,128	819	25.61	23.04	28.26	902	644	26.77	23.86	29.77
STOCKPORT	966	724	22.63	19.97	25.40	606	425	27.61	24.01	31.33
TAMESIDE AND GLOSSOP	905	690	20.96	18.27	23.77	609	465	20.16	16.93	23.60
TRAFFORD	756	538	25.68	22.50	28.98	569	388	28.88	25.07	32.79
WARRINGTON	599	431	25.99	22.45	29.66	403	280	28.84	24.39	33.44
WESTERN CHESHIRE	758	518	29.65	26.36	33.01	532	372	27.64	23.80	31.61
WIRRAL	1,295	975	22.77	20.47	25.15	1,013	714	27.60	24.81	30.45



One year survival: North West

North West



One year survival: South East

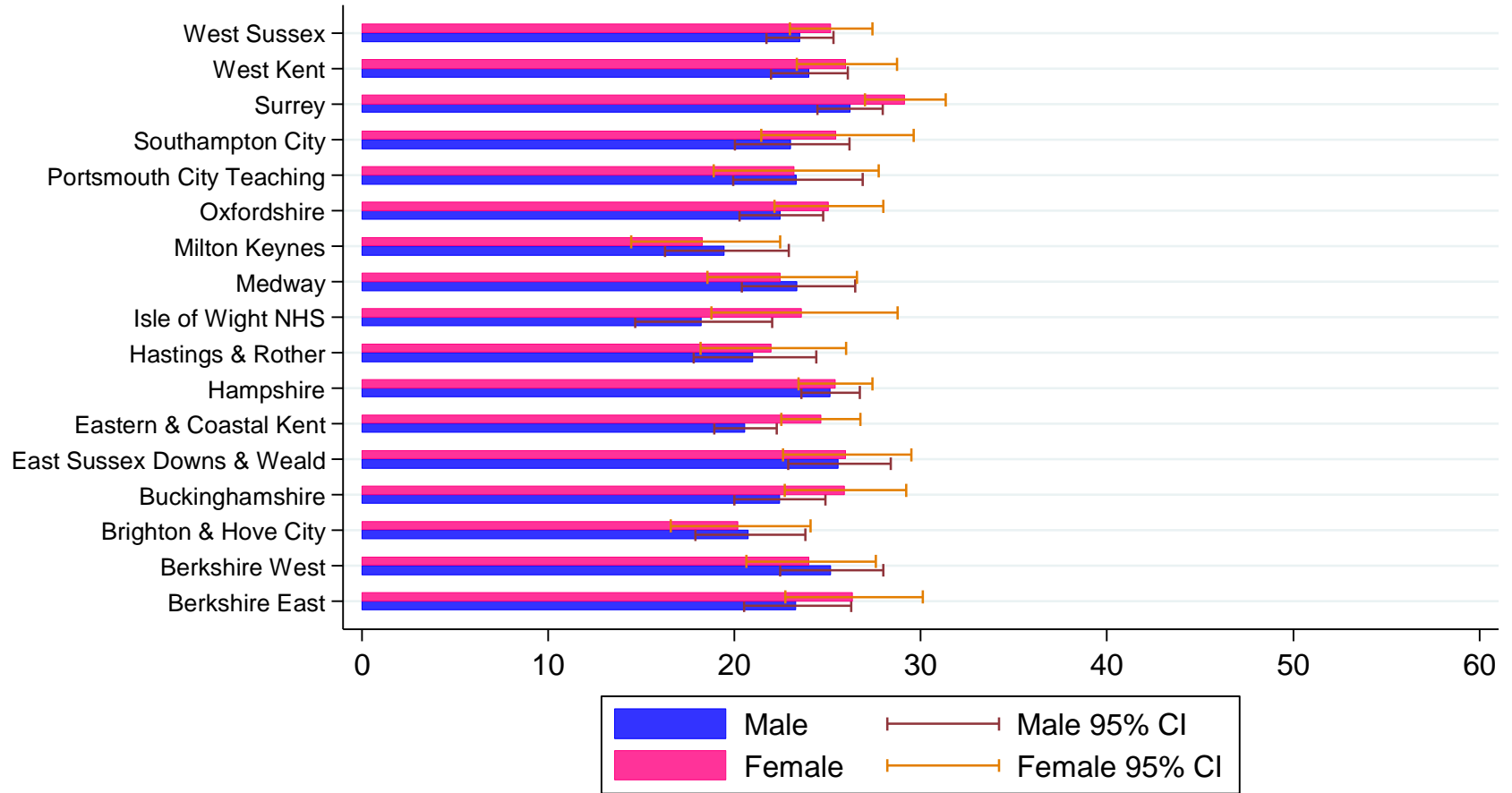
One year cancer survival, South East, 1998-2006, by sex and PCT

South East PCT	Male					Female				
	No. at risk	Deaths	Cumulative Survival (%)	95% CI		No. at risk	Deaths	Cumulative Survival (%)	95% CI	
				Lower	Upper				Lower	Upper
BERKSHIRE EAST	904	666	23.32	20.51	26.25	580	413	26.34	22.71	30.11
BERKSHIRE WEST	1,021	739	25.18	22.46	27.97	621	454	24.03	20.63	27.58
BRIGHTON AND HOVE CITY	750	580	20.77	17.88	23.81	470	364	20.20	16.58	24.09
BUCKINGHAMSHIRE	1,160	880	22.40	19.99	24.89	729	524	25.90	22.69	29.21
EAST SUSSEX DOWNS AND WEALD	1,021	736	25.60	22.89	28.38	668	476	25.99	22.60	29.50
EASTERN AND COASTAL KENT	2,409	1,851	20.57	18.92	22.26	1,657	1,221	24.62	22.52	26.76
HAMPSHIRE	3,118	2,262	25.13	23.58	26.72	1,999	1,436	25.40	23.44	27.40
HASTINGS AND ROTHER	618	475	20.99	17.79	24.38	455	344	21.96	18.16	25.99
ISLE OF WIGHT NHS	450	358	18.19	14.67	22.01	284	214	23.59	18.76	28.74
MEDWAY	772	577	23.37	20.38	26.49	438	330	22.44	18.55	26.56
MILTON KEYNES	577	454	19.46	16.25	22.90	389	304	18.28	14.46	22.46
OXFORDSHIRE	1,406	1,055	22.48	20.26	24.76	895	649	25.02	22.14	27.99
PORTSMOUTH CITY TEACHING	596	446	23.33	19.94	26.88	386	280	23.18	18.88	27.75
SOUTHAMPTON CITY	746	563	23.03	20.01	26.17	453	328	25.44	21.42	29.63
SURREY	2,595	1,848	26.19	24.46	27.96	1,801	1,226	29.16	27.01	31.35
WEST KENT	1,788	1,311	24.00	21.97	26.07	1,100	782	25.99	23.33	28.71
WEST SUSSEX	2,267	1,671	23.49	21.71	25.32	1,561	1,130	25.17	22.98	27.41



One year survival: South East

South East



One year survival: South West

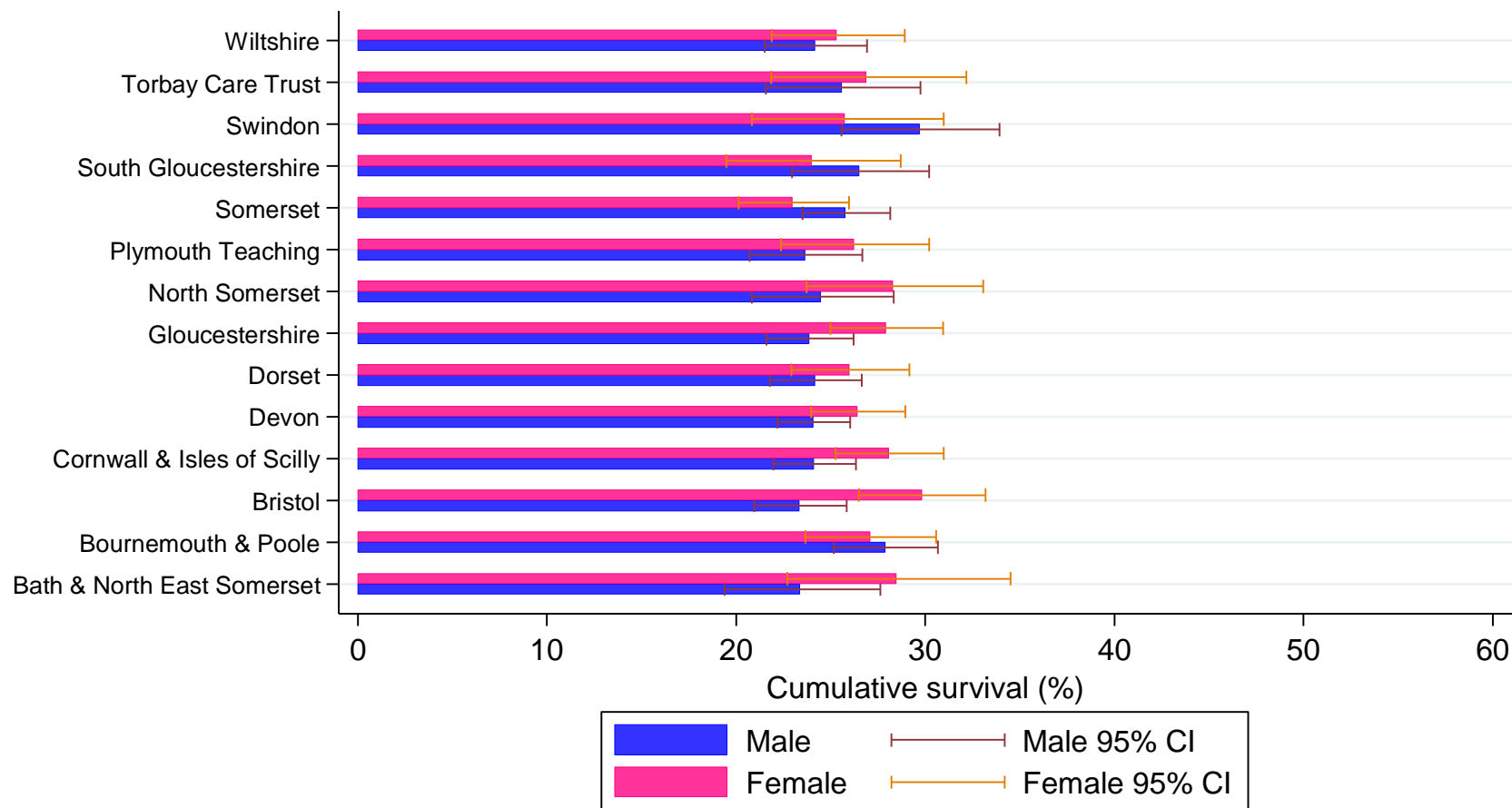
One year cancer survival, South West, 1998-2006, by sex and PCT

South West PCT	Male					Female				
	No. at risk	Deaths	Cumulative Survival (%)	95% CI		No. at risk	Deaths	Cumulative Survival (%)	95% CI	
				Lower	Upper				Lower	Upper
BATH AND NORTH EAST SOMERSET	437	323	23.39	19.39	27.62	237	164	28.49	22.73	34.50
BOURNEMOUTH AND POOLE	1,071	750	27.88	25.16	30.67	680	477	27.08	23.67	30.59
BRISTOL	1,231	912	23.36	20.96	25.84	764	518	29.81	26.50	33.19
CORNWALL AND ISLES OF SCILLY	1,581	1,157	24.13	21.97	26.34	1,012	703	28.09	25.26	30.98
DEVON	2,046	1,508	24.09	22.20	26.02	1,265	908	26.43	23.97	28.95
DORSET	1,286	936	24.19	21.79	26.65	809	579	26.00	22.92	29.17
GLOUCESTERSHIRE	1,431	1,046	23.89	21.62	26.21	929	645	27.93	24.98	30.95
NORTH SOMERSET	524	386	24.50	20.83	28.35	376	262	28.32	23.74	33.06
PLYMOUTH TEACHING	820	608	23.64	20.71	26.69	513	366	26.23	22.39	30.21
SOMERSET	1,452	1,044	25.80	23.51	28.15	842	631	23.00	20.13	25.98
SOUTH GLOUCESTERSHIRE	596	425	26.52	22.95	30.21	342	255	23.97	19.50	28.71
SWINDON	499	337	29.70	25.59	33.92	296	216	25.77	20.84	30.97
TORBAY CARE TRUST	456	331	25.58	21.58	29.76	294	210	26.90	21.86	32.18
WILTSHIRE	1,015	747	24.19	21.52	26.94	630	455	25.33	21.89	28.91



One year survival: South West

South West



One year survival: Yorkshire and the Humber

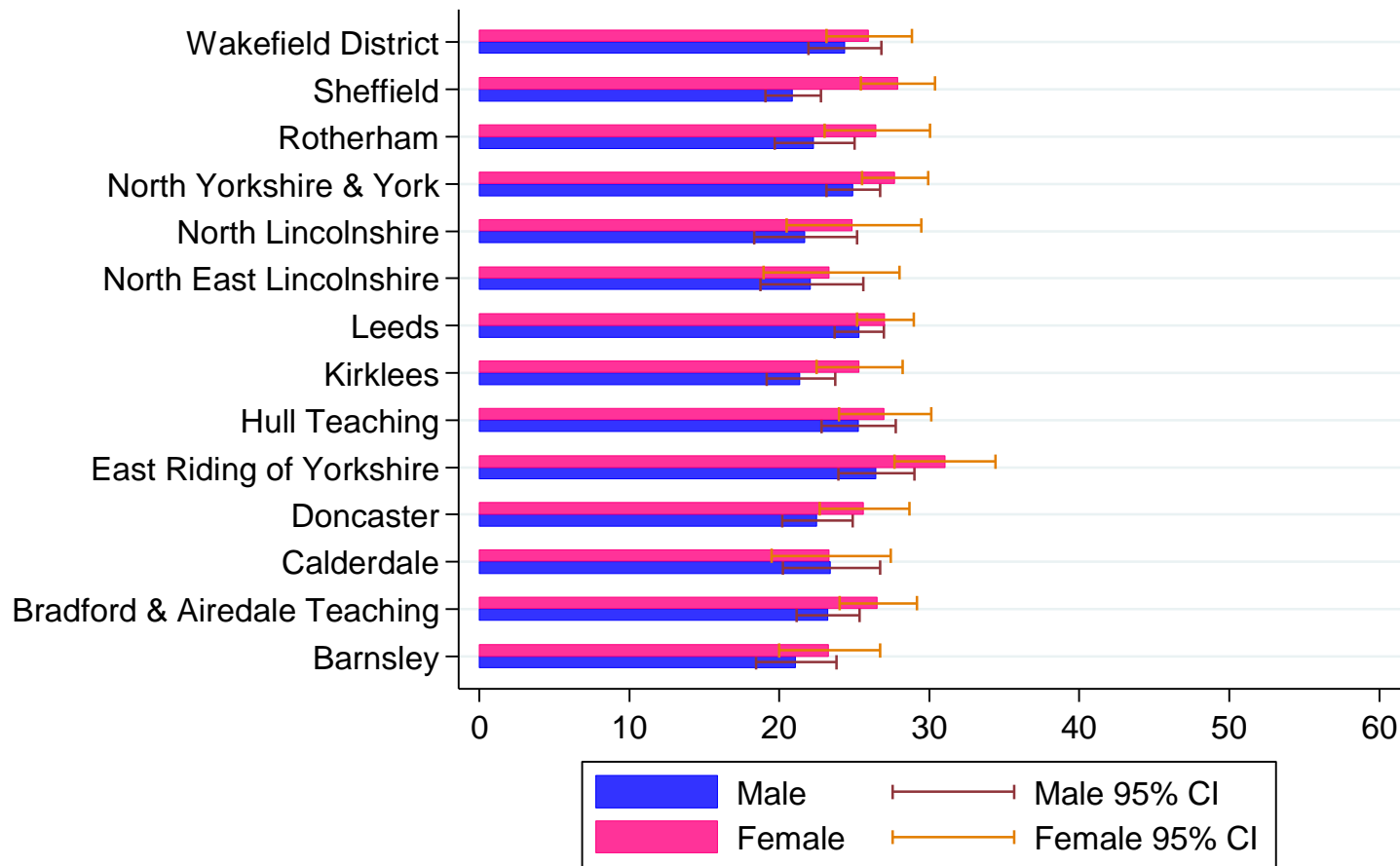
One year cancer survival, Yorkshire and the Humber, 1998-2006, by sex and PCT

Yorkshire and Humber	Male					Female				
	No. at risk	Deaths	Cumulative Survival (%)	95% CI		No. at risk	Deaths	Cumulative Survival (%)	95% CI	
				Lower	Upper				Lower	Upper
PCT										
BARNSELEY	934	717	21.07	18.44	23.82	645	480	23.27	19.98	26.71
BRADFORD AND AIREDALE TEACHING	1,653	1,233	23.23	21.17	25.36	1,212	856	26.57	24.04	29.18
CALDERDALE	693	515	23.42	20.25	26.73	465	345	23.37	19.51	27.43
DONCASTER	1,307	977	22.51	20.21	24.90	868	623	25.64	22.70	28.69
EAST RIDING OF YORKSHIRE	1,215	868	26.45	23.94	29.03	775	512	31.03	27.68	34.43
HULL TEACHING	1,244	907	25.25	22.81	27.75	838	594	27.00	23.96	30.12
KIRKLEES	1,284	987	21.40	19.15	23.74	940	684	25.30	22.50	28.20
LEEDS	2,847	2,073	25.32	23.70	26.97	2,246	1,587	27.06	25.18	28.96
NORTH EAST LINCOLNSHIRE	591	448	22.07	18.73	25.59	352	262	23.34	18.94	28.00
NORTH LINCOLNSHIRE	603	454	21.68	18.35	25.20	378	274	24.87	20.50	29.47
NORTH YORKSHIRE AND YORK	2,414	1,747	24.92	23.15	26.72	1,673	1,168	27.70	25.51	29.93
ROTHERHAM	1,002	755	22.31	19.71	25.02	636	454	26.48	23.01	30.06
SHEFFIELD	1,984	1,519	20.90	19.08	22.78	1,373	952	27.90	25.45	30.38
WAKEFIELD DISTRICT	1,257	924	24.35	21.95	26.82	972	690	25.96	23.14	28.86



One year survival: Yorkshire and the Humber

Yorkshire and the Humber



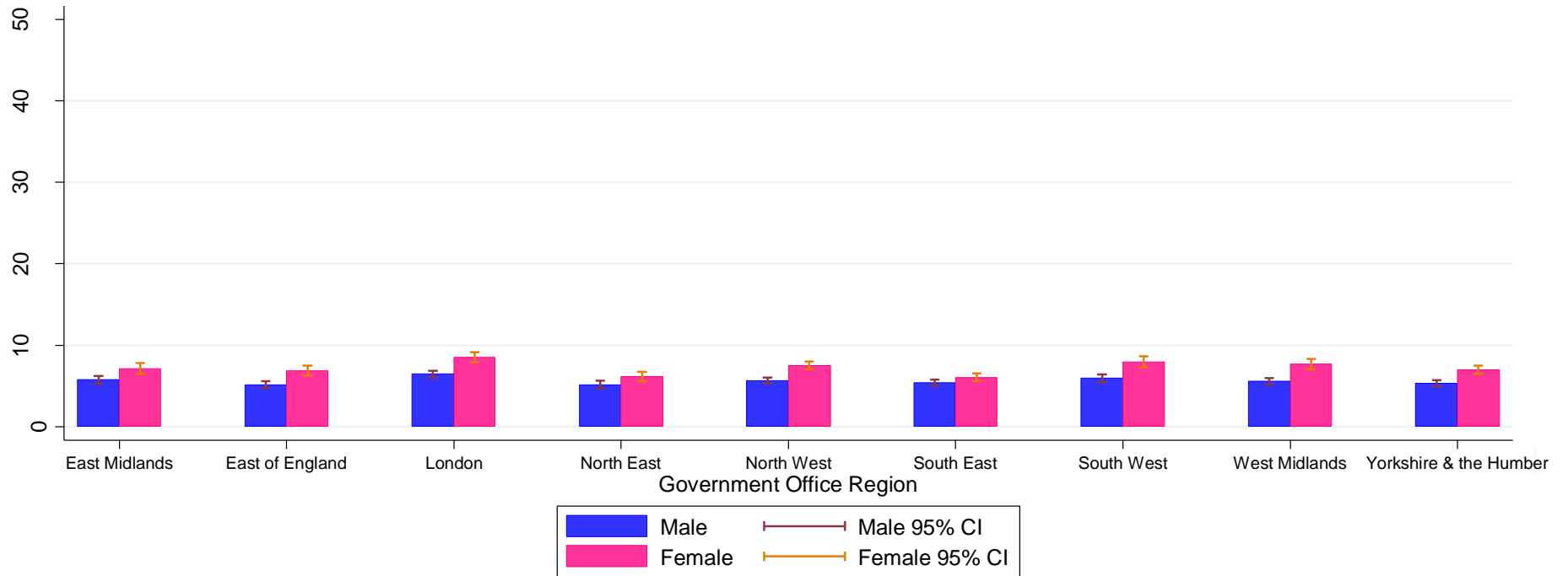
Five year survival: England

Five year cancer survival, England, 1998-2006, by sex and Government Office Region

Government Office Region	Male					Female				
	No. at risk	Deaths	Cumulative Survival (%)	95% CI		No. at risk	Deaths	Cumulative Survival (%)	95% CI	
				Lower	Upper				Lower	Upper
East Midlands	13,561	11,880	5.74	5.27	6.23	8,341	7,130	7.10	6.45	7.78
East of England	16,014	14,132	5.14	4.74	5.57	9,925	8,487	6.87	6.28	7.48
London	18,480	16,061	6.44	6.03	6.87	12,469	10,467	8.52	7.94	9.13
North East	11,928	10,527	5.13	4.66	5.63	8,933	7,771	6.13	5.55	6.75
North West	25,373	22,358	5.67	5.34	6.02	18,519	15,868	7.52	7.07	7.98
South East	22,204	19,567	5.37	5.02	5.74	14,488	12,578	6.05	5.59	6.54
South West	14,439	12,566	5.94	5.48	6.43	8,987	7,638	7.93	7.27	8.63
West Midlands	16,821	14,856	5.56	5.17	5.98	9,676	8,241	7.65	7.03	8.31
Yorkshire and the Humber	19,039	16,851	5.30	4.93	5.69	13,377	11,447	6.97	6.45	7.51
Total	157,859	138,798				104,715	89,627			



Five year survival: England



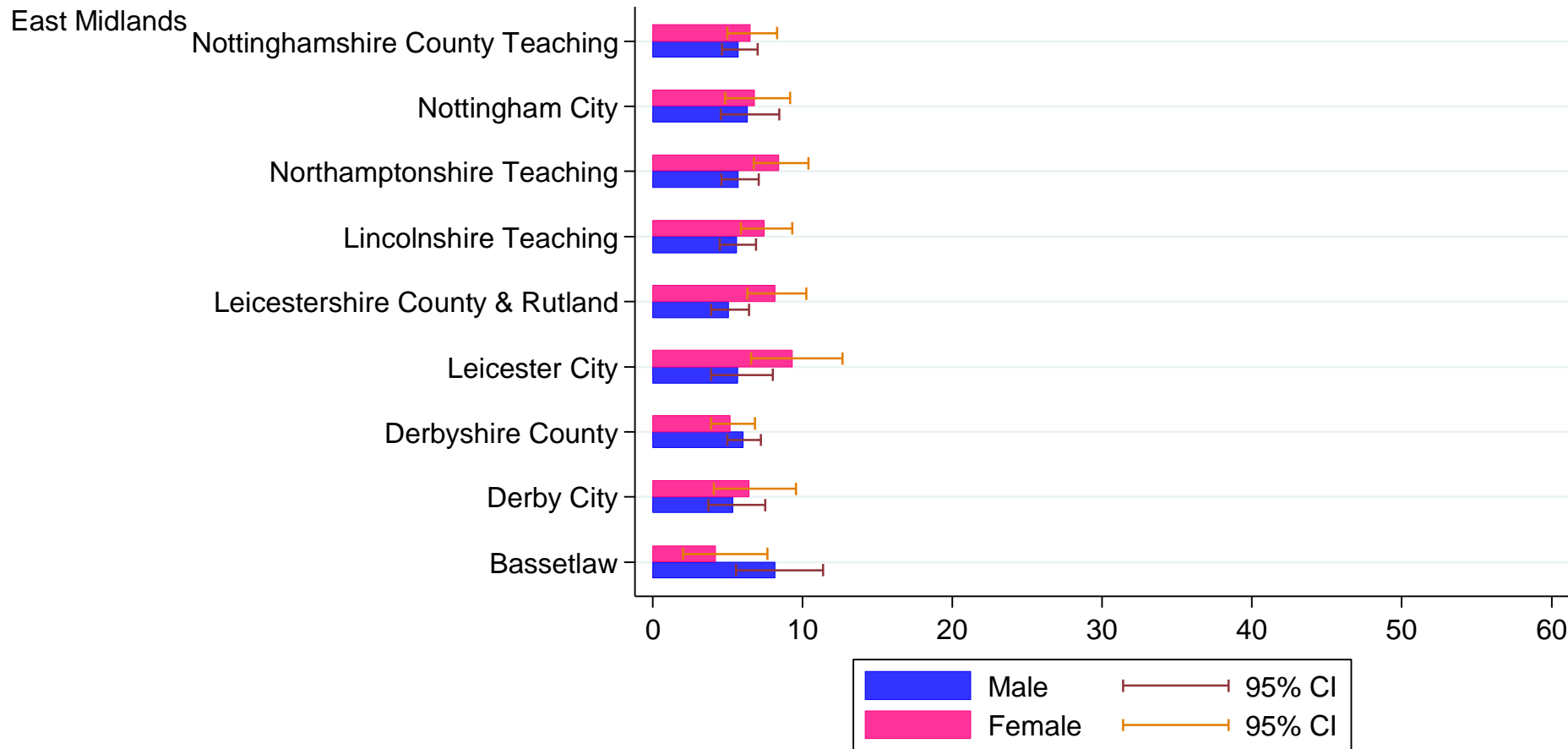
Five year survival: East Midlands

Five year cancer survival, East Midlands, 1998-2006, by sex and PCT

East Midlands	Male					Female				
	No. at risk	Deaths	Cumulative Survival (%)	95% CI		No. at risk	Deaths	Cumulative Survival (%)	95% CI	
				Lower	Upper				Lower	Upper
PCT										
BASSETLAW	419	366	8.15	5.56	11.37	240	217	4.19	1.99	7.64
DERBY CITY	758	677	5.38	3.71	7.49	484	409	6.42	4.05	9.54
DERBYSHIRE COUNTY	2,452	2,166	6.03	4.98	7.22	1,396	1,227	5.20	3.87	6.80
LEICESTER CITY	839	720	5.69	3.87	8.00	543	445	9.32	6.55	12.66
LEICESTERSHIRE COUNTY AND RUTLAND	1,795	1,573	5.03	3.87	6.40	1,113	938	8.13	6.32	10.23
LINCOLNSHIRE TEACHING	2,176	1,873	5.58	4.46	6.88	1,263	1,071	7.46	5.86	9.31
NORTHAMPTONSHIRE TEACHING	1,887	1,675	5.72	4.58	7.05	1,242	1,062	8.45	6.75	10.37
NOTTINGHAM CITY	951	822	6.29	4.54	8.43	683	595	6.77	4.81	9.15
NOTTINGHAMSHIRE COUNTY TEACHING	2,199	1,929	5.72	4.62	6.98	1,303	1,106	6.49	4.97	8.29



Five year survival: East Midlands



Five year survival: West Midlands

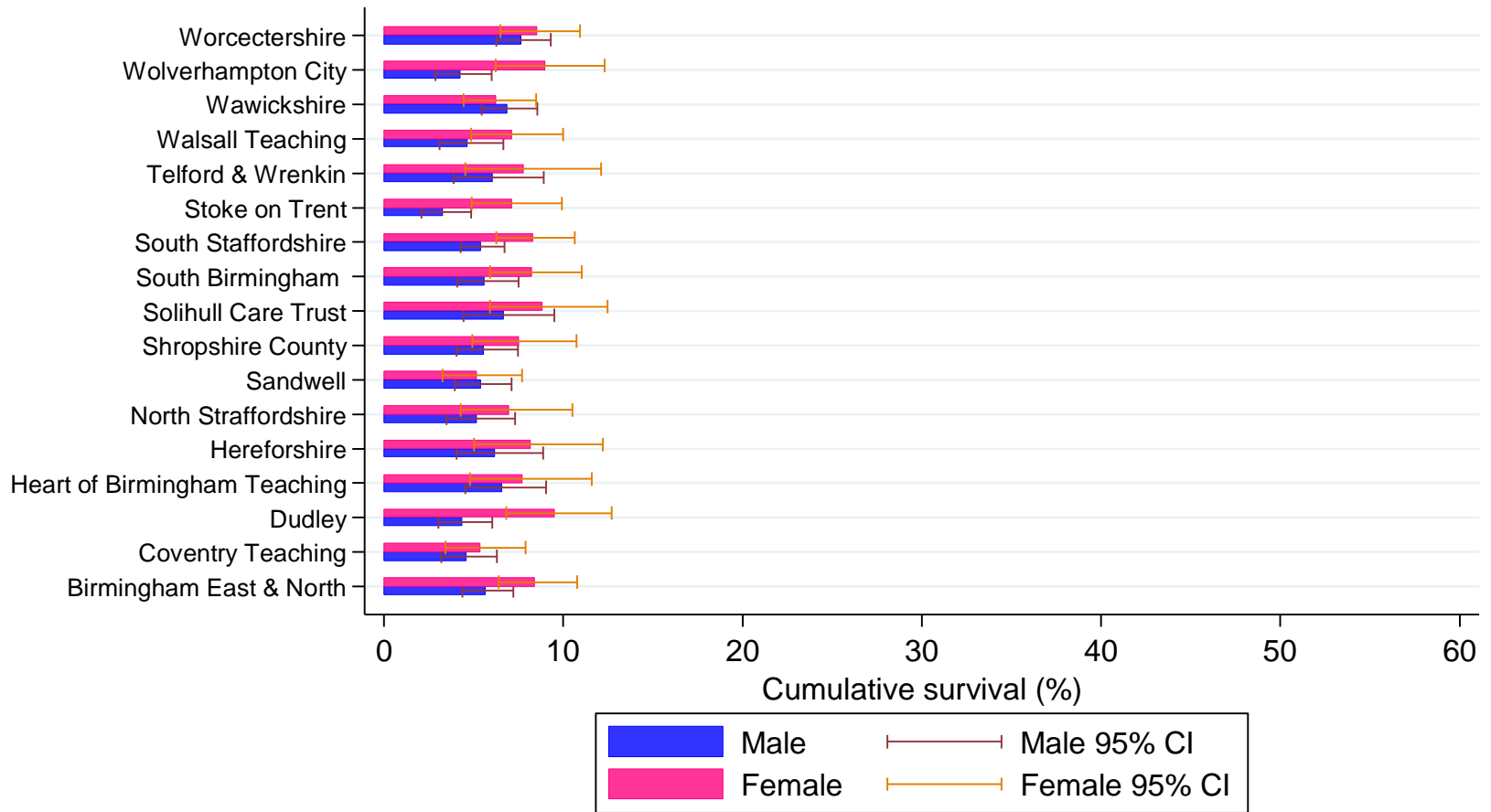
Five year cancer survival, West Midlands, 1998-2006, by sex and PCT

West Midlands	Male					Female				
	No. at risk	Deaths	Cumulative Survival (%)	95% CI		No. at risk	Deaths	Cumulative Survival (%)	95% CI	
PCT				Lower	Upper				Lower	Upper
BIRMINGHAM EAST AND NORTH	1,373	1,204	5.68	4.37	7.21	881	852	8.42	6.39	10.79
COVENTRY TEACHING	933	839	4.56	3.19	6.29	603	592	5.36	3.42	7.90
DUDLEY	1,064	960	4.36	3.05	6.03	517	492	9.51	6.84	12.70
HEART OF BIRMINGHAM TEACHING	642	560	6.56	4.55	9.05	309	296	7.74	4.79	11.59
HEREFORDSHIRE	494	438	6.16	4.05	8.88	289	275	8.16	5.04	12.21
NORTH STAFFORDSHIRE	704	633	5.19	3.51	7.33	360	353	6.97	4.29	10.50
SANDWELL	1,119	980	5.38	3.94	7.12	619	606	5.18	3.28	7.71
SHROPSHIRE COUNTY	909	808	5.59	4.05	7.47	515	501	7.50	4.94	10.75
SOLIHULL CARE TRUST	552	468	6.67	4.44	9.50	395	379	8.85	5.92	12.49
SOUTH BIRMINGHAM	1,029	904	5.62	4.07	7.52	676	660	8.24	5.92	11.05
SOUTH STAFFORDSHIRE	1,727	1,533	5.40	4.27	6.72	978	950	8.28	6.26	10.65
STOKE ON TRENT	1,080	974	3.28	2.10	4.86	601	587	7.15	4.91	9.94
TELFORD AND WREKIN	473	410	6.07	3.88	8.93	290	281	7.78	4.55	12.12
WALSALL TEACHING	922	820	4.66	3.10	6.67	505	484	7.15	4.88	9.98
WARWICKSHIRE	1,386	1,208	6.88	5.45	8.54	794	775	6.24	4.43	8.48
WOLVERHAMPTON CITY	863	776	4.25	2.88	6.01	476	457	8.97	6.24	12.30
WORCESTERSHIRE	1,551	1,341	7.68	6.26	9.29	868	838	8.54	6.49	10.94



Five year survival: West Midlands

West Midlands



Five year survival: East of England

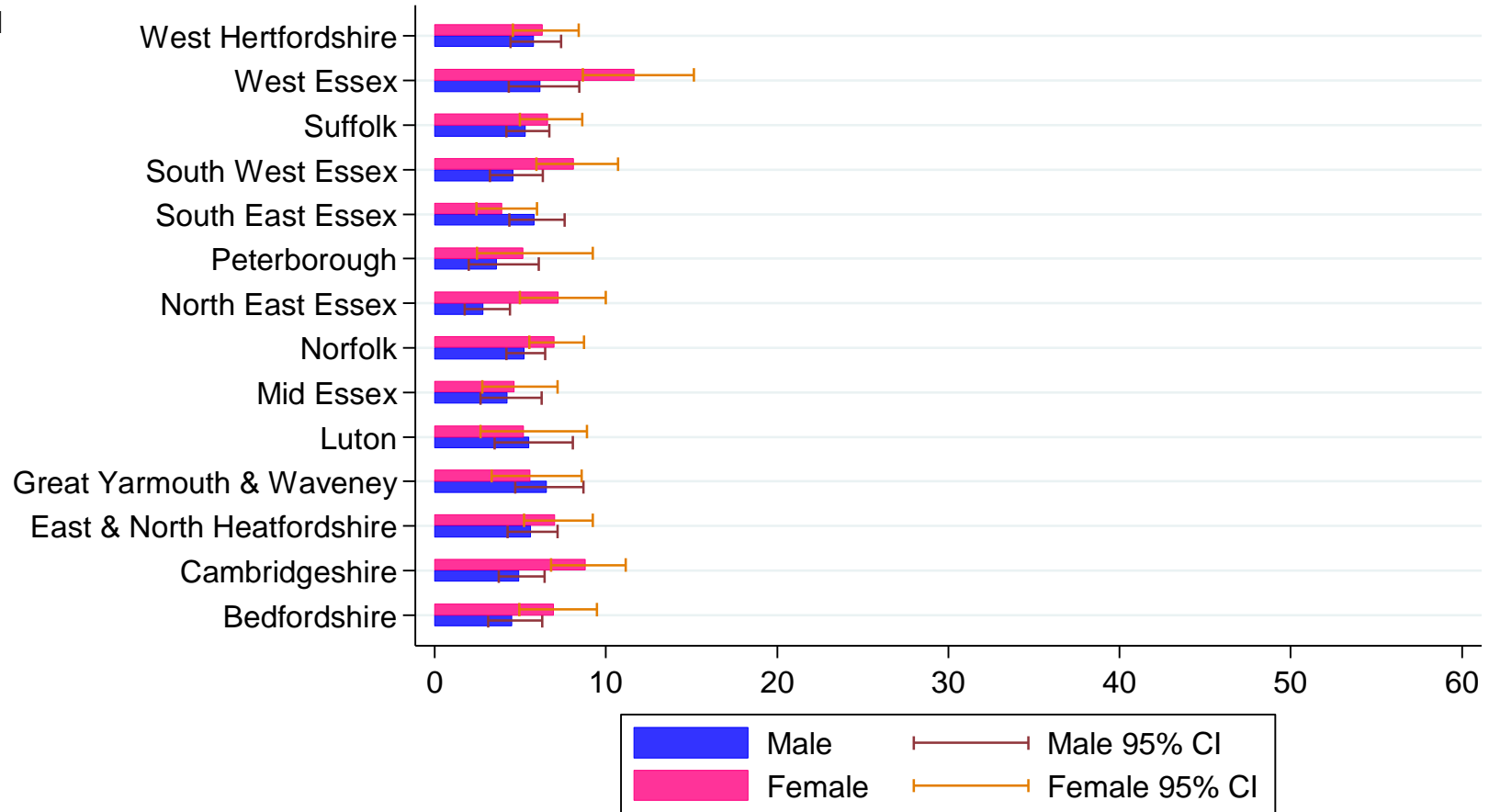
Five year cancer survival, East of England, 1998-2006, by sex and PCT

East of England	Male					Female				
	No. at risk	Deaths	Cumulative Survival (%)	95% CI		No. at risk	Deaths	Cumulative Survival (%)	95% CI	
				Lower	Upper				Lower	Upper
PCT										
BEDFORDSHIRE	1,032	921	4.52	3.13	6.27	639	619	6.97	4.93	9.46
CAMBRIDGESHIRE	1,591	1,390	4.95	3.74	6.40	999	966	8.83	6.80	11.17
EAST AND NORTH HERTFORDSHIRE	1,295	1,158	5.60	4.26	7.17	872	849	7.05	5.22	9.24
GREAT YARMOUTH AND WAVENEY	814	707	6.51	4.71	8.69	467	456	5.55	3.32	8.59
LUTON	495	437	5.48	3.51	8.07	296	290	5.19	2.69	8.89
MID ESSEX	864	755	4.21	2.69	6.24	546	535	4.62	2.77	7.17
NORFOLK	2,452	2,139	5.24	4.18	6.46	1,371	1,332	7.00	5.51	8.71
NORTH EAST ESSEX	970	876	2.86	1.75	4.39	588	576	7.22	4.98	10.00
PETERBOROUGH	434	395	3.63	1.98	6.07	275	270	5.14	2.48	9.23
SOUTH EAST ESSEX	1,140	1,000	5.84	4.37	7.60	732	718	3.92	2.42	5.97
SOUTH WEST ESSEX	1,105	976	4.60	3.23	6.31	754	734	8.11	5.94	10.71
SUFFOLK	1,788	1,585	5.33	4.17	6.68	1,030	999	6.64	4.99	8.61
WEST ESSEX	781	678	6.17	4.33	8.45	519	494	11.65	8.65	15.14
WEST HERTFORDSHIRE	1,253	1,115	5.79	4.43	7.39	836	813	6.30	4.57	8.40



Five year survival: East of England

East of England



Five year survival: London

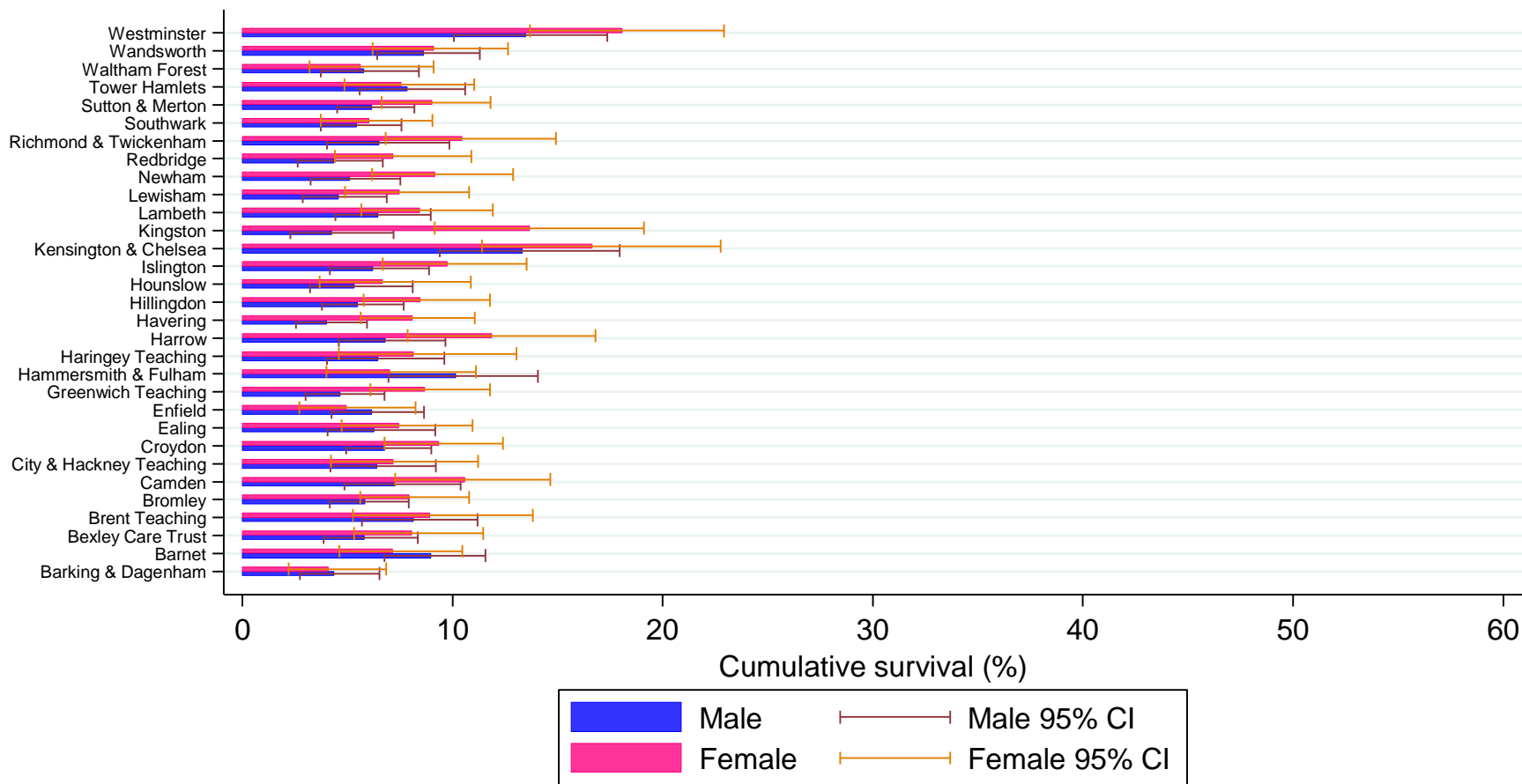
Five year cancer survival, London, 1998-2006, by sex and PCT

London	Male					Female				
	No. at risk	Deaths	Cumulative Survival (%)	95% CI		No. at risk	Deaths	Cumulative Survival (%)	95% CI	
PCT				Lower	Upper				Lower	Upper
BARKING AND DAGENHAM	630	565	4.35	2.74	6.52	431	384	4.07	2.19	6.84
BARNET	677	581	8.97	6.76	11.56	486	417	7.16	4.60	10.45
BEXLEY CARE TRUST	716	618	5.81	3.84	8.35	481	402	8.03	5.31	11.46
BRENT TEACHING	519	444	8.15	5.67	11.18	304	243	8.93	5.25	13.81
BROMLEY	858	740	5.83	4.15	7.90	633	529	7.94	5.61	10.78
CAMDEN	496	424	7.29	4.85	10.39	358	293	10.60	7.27	14.64
CITY AND HACKNEY TEACHING	503	447	6.38	4.18	9.19	288	246	7.18	4.19	11.21
CROYDON	767	669	6.76	4.93	8.97	541	455	9.32	6.74	12.39
EALING	582	502	6.27	4.03	9.18	410	343	7.43	4.71	10.95
ENFIELD	637	555	6.17	4.22	8.62	426	364	4.96	2.69	8.23
GREENWICH TEACHING	708	621	4.62	3.00	6.74	528	449	8.65	6.07	11.78
HAMMERSMITH AND FULHAM	392	321	10.14	6.93	14.05	289	247	6.99	3.99	11.11
HARINGEY TEACHING	470	405	6.42	4.01	9.59	251	213	8.16	4.59	13.02
HARROW	461	411	6.81	4.58	9.64	262	214	11.87	7.84	16.80
HAVERING	804	719	3.98	2.54	5.91	527	447	8.07	5.63	11.06
HILLINGDON	680	601	5.50	3.78	7.67	465	392	8.45	5.75	11.78
HOUNSLOW	498	433	5.29	3.22	8.10	315	265	6.65	3.66	10.85
ISLINGTON	602	530	6.22	4.14	8.86	369	310	9.74	6.66	13.51
KENSINGTON AND CHELSEA	323	253	13.32	9.38	17.96	239	180	16.65	11.40	22.75
KINGSTON	356	316	4.25	2.26	7.19	268	207	13.68	9.15	19.11
LAMBETH	670	583	6.43	4.41	8.95	399	340	8.42	5.64	11.90
LEWISHAM	667	581	4.57	2.87	6.86	455	387	7.47	4.88	10.77
NEWHAM	577	521	5.08	3.24	7.51	378	320	9.16	6.16	12.86
REDBRIDGE	551	495	4.33	2.62	6.67	355	305	7.18	4.39	10.88
RICHMOND AND TWICKENHAM	393	340	6.51	4.01	9.84	331	269	10.42	6.81	14.91
SOUTHWARK	749	660	5.41	3.72	7.55	451	389	6.00	3.71	9.04
SUTTON AND MERTON	969	834	6.16	4.49	8.17	700	584	9.00	6.63	11.81
TOWER HAMLETS	598	513	7.84	5.57	10.60	375	323	7.55	4.86	11.01
WALTHAM FOREST	528	464	5.75	3.71	8.40	341	298	5.63	3.18	9.08
WANDSWORTH	653	560	8.63	6.40	11.28	491	405	9.08	6.20	12.62
WESTMINSTER	446	355	13.46	10.06	17.35	322	247	18.05	13.68	22.92



Five year survival: London

London



Five year survival: North East

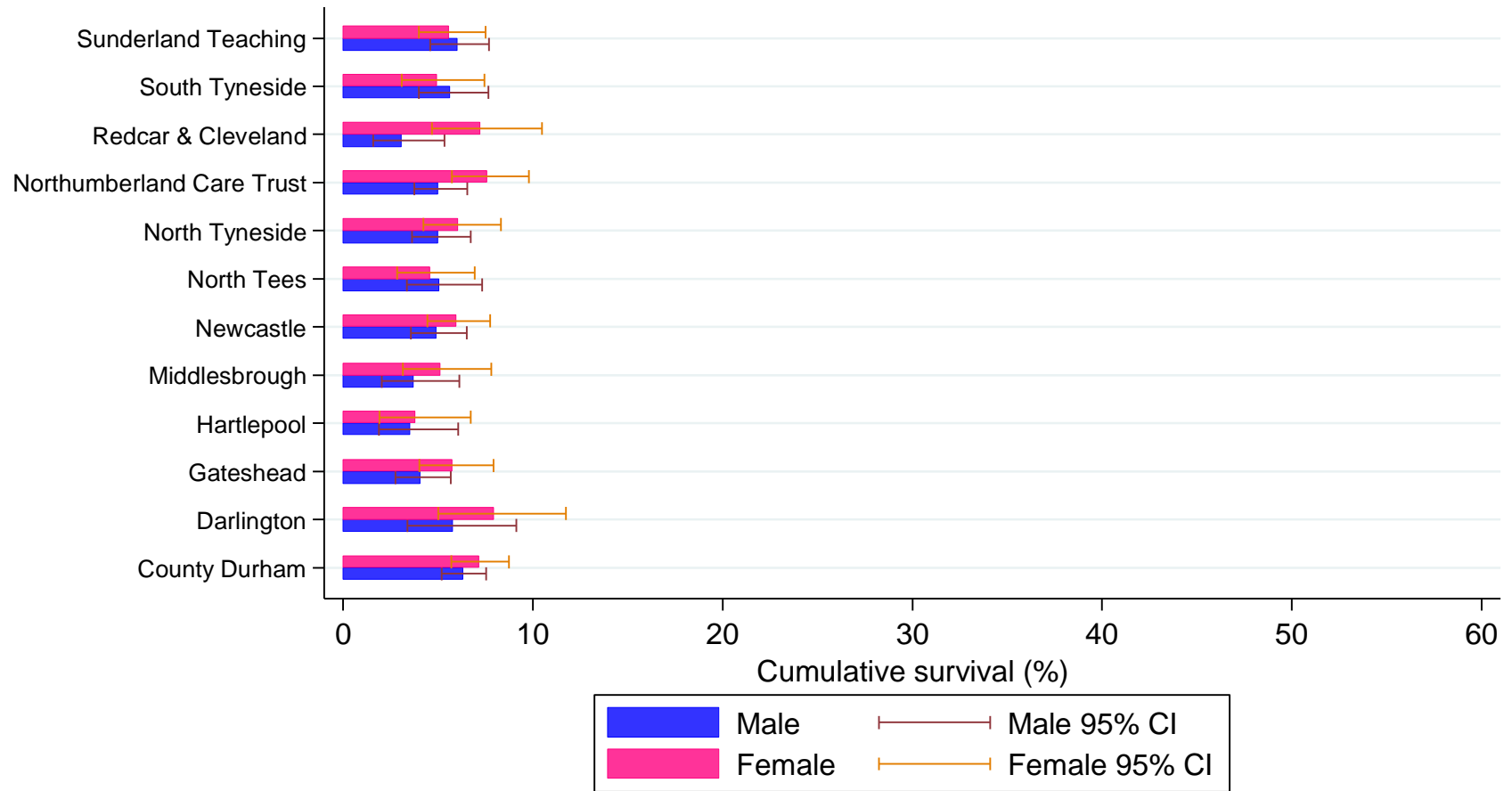
Five year cancer survival, North East, 1998-2006, by sex and PCT

North East PCT	Male					Female				
	No. at risk	Deaths	Cumulative Survival (%)	95% CI		No. at risk	Deaths	Cumulative Survival (%)	95% CI	
				Lower	Upper				Lower	Upper
COUNTY DURHAM	2,322	2,026	6.29	5.18	7.54	1,589	1,367	7.13	5.71	8.74
DARLINGTON	384	334	5.79	3.37	9.13	325	281	7.94	5.00	11.74
GATESHEAD	1,032	929	4.03	2.75	5.67	776	682	5.75	4.01	7.91
HARTLEPOOL	419	376	3.54	1.87	6.06	335	301	3.80	1.90	6.73
MIDDLESBROUGH	625	544	3.69	2.04	6.11	509	447	5.14	3.15	7.81
NEWCASTLE	1,335	1,179	4.89	3.57	6.52	1,071	935	5.94	4.44	7.73
NORTH TEES	679	605	5.08	3.34	7.33	586	519	4.59	2.85	6.93
NORTH TYNESIDE	1,025	918	5.01	3.63	6.72	727	632	6.05	4.21	8.32
NORTHUMBERLAND CARE TRUST	1,343	1,195	5.00	3.74	6.53	955	822	7.60	5.74	9.79
REDCAR AND CLEVELAND	575	517	3.07	1.59	5.34	411	354	7.23	4.69	10.47
SOUTH TYNESIDE	837	727	5.62	3.98	7.65	667	577	4.93	3.07	7.43
SUNDERLAND TEACHING	1,352	1,177	6.00	4.57	7.69	982	854	5.56	3.98	7.51



Five year survival: North East

North East



Five year survival: North West

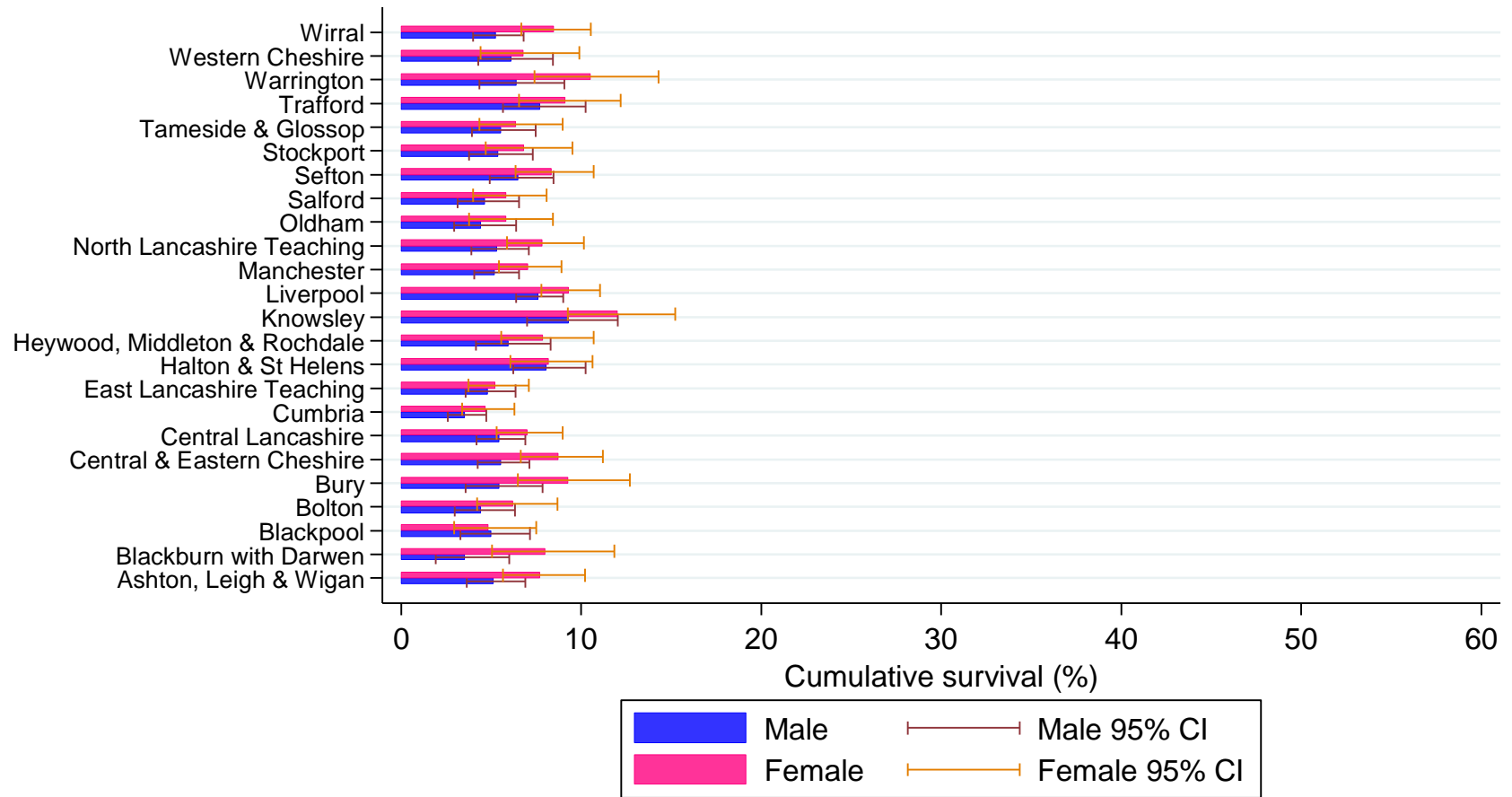
Five year cancer survival, North West, 1998-2006, by sex and PCT

North West PCT	Male					Female				
	No. at risk	Deaths	Cumulative Survival (%)	95% CI		No. at risk	Deaths	Cumulative Survival (%)	95% CI	
				Lower	Upper				Lower	Upper
ASHTON, LEIGH AND WIGAN	1,149	999	5.10	3.65	6.88	732	629	7.72	5.65	10.20
BLACKBURN WITH DARWEN	506	454	3.55	1.92	5.99	320	280	8.02	5.05	11.85
BLACKPOOL	663	594	4.96	3.27	7.14	499	444	4.86	2.94	7.49
BOLTON	934	822	4.43	2.97	6.31	638	553	6.19	4.22	8.67
BURY	626	550	5.43	3.57	7.85	466	396	9.27	6.47	12.69
CENTRAL AND EASTERN CHESHIRE	1,365	1,207	5.55	4.23	7.11	892	743	8.75	6.64	11.20
CENTRAL LANCASHIRE	1,462	1,301	5.42	4.18	6.89	1,055	907	6.97	5.28	8.97
CUMBRIA	1,722	1,560	3.53	2.57	4.72	1,205	1,063	4.67	3.37	6.27
EAST LANCASHIRE TEACHING	1,337	1,192	4.82	3.56	6.36	934	841	5.22	3.72	7.09
HALTON AND ST HELENS	1,038	883	8.08	6.21	10.24	807	684	8.16	6.07	10.63
HEYWOOD, MIDDLETON AND ROCHDALE	748	658	5.97	4.13	8.28	577	491	7.86	5.55	10.67
KNOWSLEY	653	556	9.31	6.99	12.03	606	494	12.04	9.24	15.22
LIVERPOOL	2,122	1,846	7.62	6.39	8.99	1,777	1,490	9.33	7.79	11.03
MANCHESTER	1,797	1,591	5.20	4.05	6.54	1,267	1,078	7.03	5.42	8.91
NORTH LANCASHIRE TEACHING	1,180	1,043	5.32	3.88	7.08	823	703	7.82	5.87	10.13
OLDHAM	820	738	4.43	2.94	6.37	577	501	5.80	3.77	8.43
SALFORD	940	837	4.63	3.13	6.54	789	679	5.80	3.99	8.06
SEFTON	1,128	984	6.52	4.90	8.45	902	772	8.36	6.36	10.68
STOCKPORT	966	852	5.35	3.77	7.30	606	522	6.84	4.69	9.52
TAMESIDE AND GLOSSOP	905	798	5.51	3.93	7.47	609	528	6.38	4.34	8.95
TRAFFORD	756	638	7.73	5.64	10.23	569	472	9.11	6.54	12.19
WARRINGTON	599	521	6.42	4.34	9.05	403	337	10.52	7.39	14.28
WESTERN CHESHIRE	758	657	6.13	4.28	8.42	532	453	6.80	4.40	9.89
WIRRAL	1,295	1,164	5.26	3.99	6.78	1,013	873	8.47	6.66	10.54



Five year survival: North West

North West



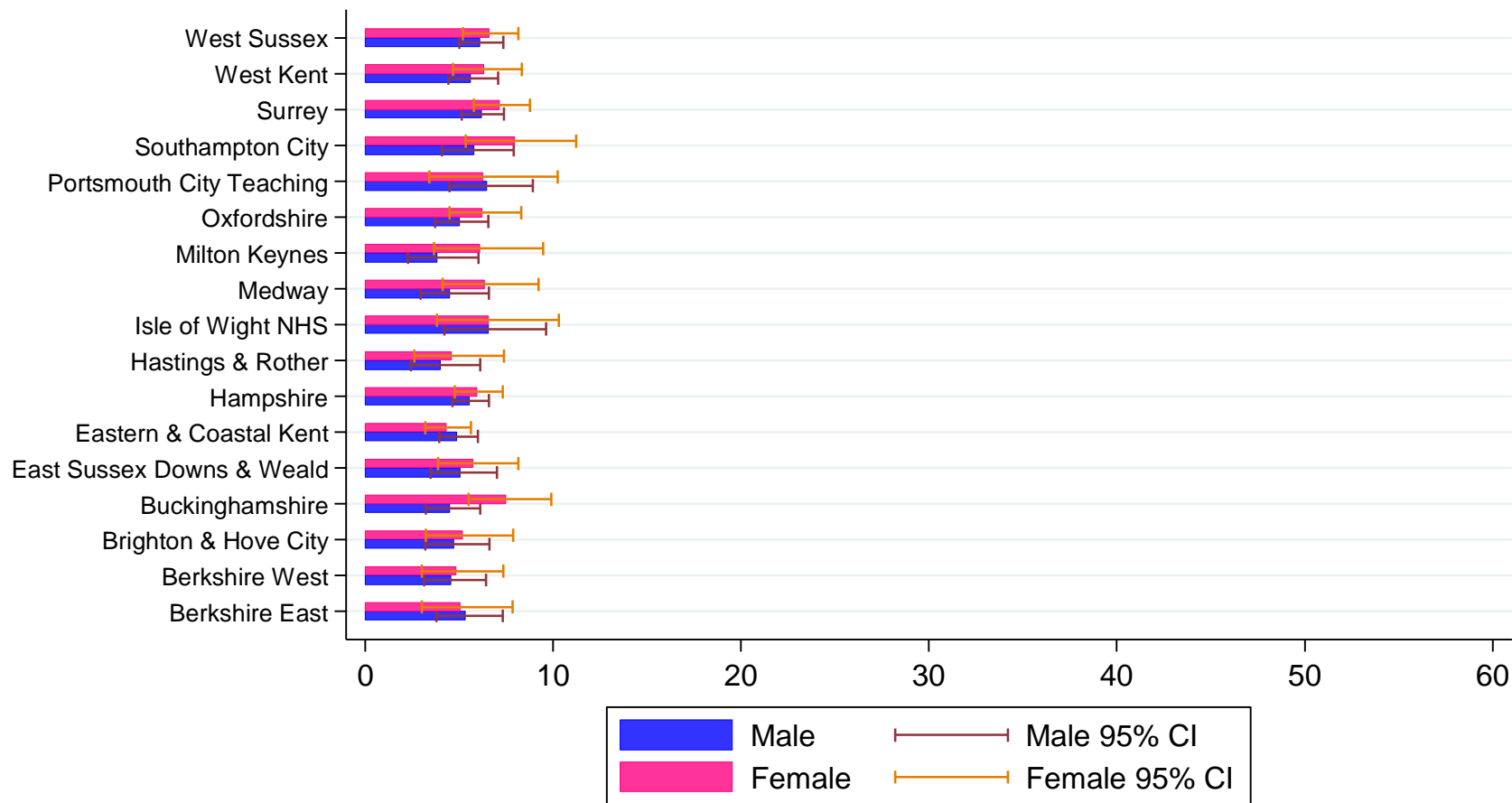
Five year survival: South East

Five-year cancer survival, South East, 1998-2006, by sex and PCT

South East PCT	Male					Female				
	No. at risk	Deaths	Cumulative Survival (%)	95% CI		No. at risk	Deaths	Cumulative Survival (%)	95% CI	
				Lower	Upper				Lower	Upper
BERKSHIRE EAST	904	788	5.35	3.77	7.31	580	502	5.04	3.01	7.83
BERKSHIRE WEST	1,021	897	4.57	3.11	6.42	621	541	4.85	3.01	7.34
BRIGHTON AND HOVE CITY	750	681	4.68	3.18	6.59	470	421	5.20	3.22	7.86
BUCKINGHAMSHIRE	1,160	1,044	4.52	3.23	6.11	729	632	7.49	5.49	9.88
EAST SUSSEX DOWNS AND WEALD	1,021	891	5.03	3.47	6.99	668	578	5.75	3.87	8.13
EASTERN AND COASTAL KENT	2,409	2,142	4.89	3.92	6.00	1,657	1,483	4.28	3.18	5.63
HAMPSHIRE	3,118	2,734	5.54	4.62	6.58	1,999	1,725	5.95	4.76	7.32
HASTINGS AND ROTHER	618	562	3.98	2.42	6.11	455	407	4.59	2.61	7.38
ISLE OF WIGHT NHS	450	398	6.55	4.20	9.61	284	256	6.54	3.79	10.29
MEDWAY	772	689	4.51	2.93	6.58	438	388	6.34	4.12	9.21
MILTON KEYNES	577	521	3.83	2.26	6.03	389	339	6.11	3.64	9.46
OXFORDSHIRE	1,406	1,239	5.00	3.72	6.55	895	777	6.21	4.49	8.30
PORTSMOUTH CITY TEACHING	596	530	6.47	4.49	8.92	386	324	6.23	3.40	10.23
SOUTHAMPTON CITY	746	671	5.78	4.09	7.88	453	390	7.95	5.33	11.23
SURREY	2,595	2,238	6.18	5.11	7.38	1,801	1,517	7.16	5.76	8.75
WEST KENT	1,788	1,980	5.63	4.41	7.05	1,561	1,355	6.31	4.65	8.32
WEST SUSSEX	2,267	788	6.10	5.01	7.33	580	502	6.57	5.19	8.15

Five year survival: South East

South East



Five year survival: South West

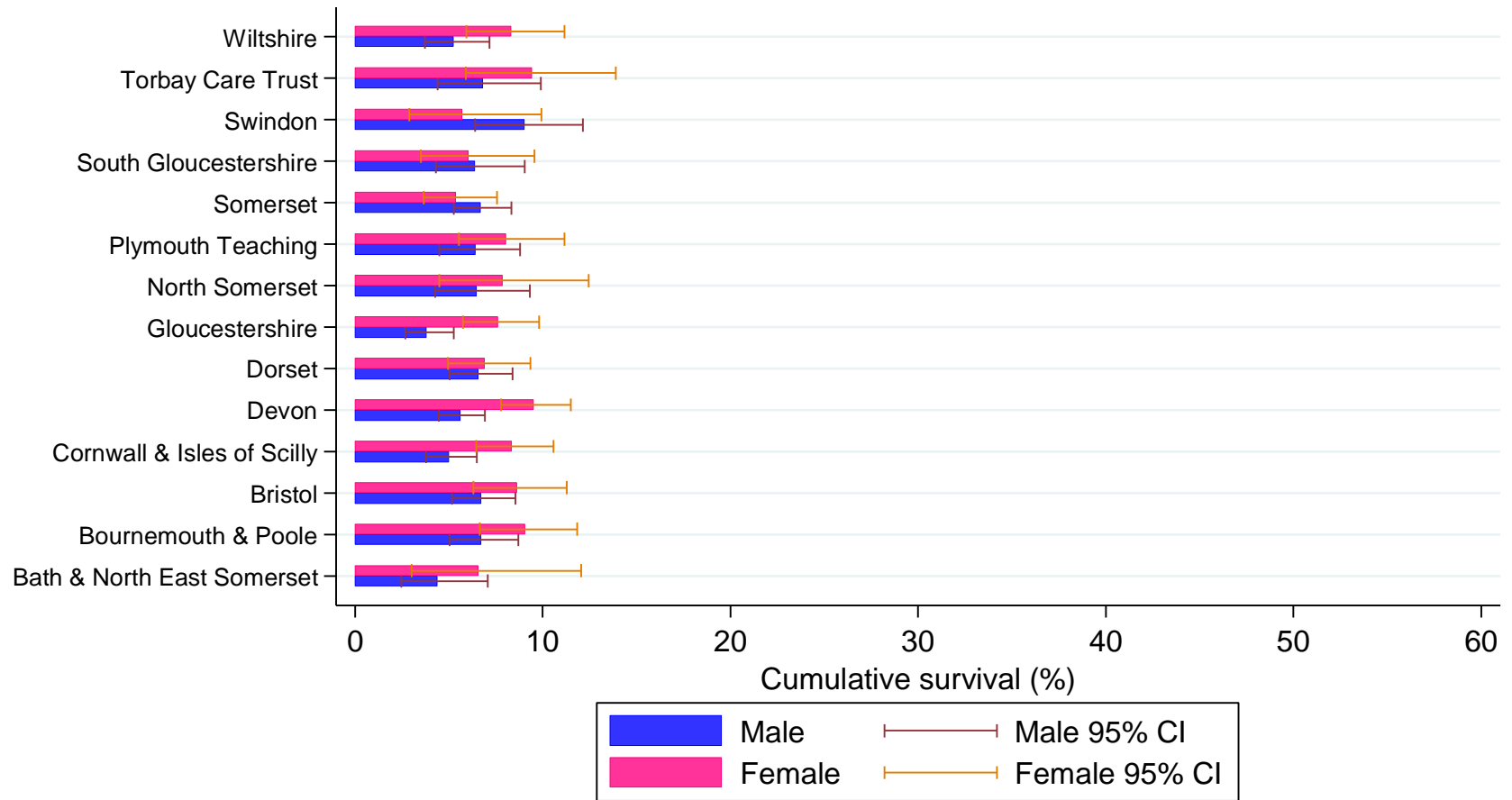
Five year cancer survival, South West, 1998-2006, by sex and PCT

South West	Male					Female				
	No. at risk	Deaths	Cumulative Survival (%)	95% CI		No. at risk	Deaths	Cumulative Survival (%)	95% CI	
PCT				Lower	Upper				Lower	Upper
BATH AND NORTH EAST SOMERSET	437	387	4.37	2.47	7.07	237	200	6.58	3.02	12.05
BOURNEMOUTH AND POOLE	1,071	922	6.72	5.05	8.70	680	568	9.04	6.66	11.85
BRISTOL	1,231	1,067	6.71	5.16	8.54	764	637	8.60	6.32	11.29
CORNWALL AND ISLES OF SCILLY	1,581	1,381	5.01	3.79	6.48	1,012	851	8.38	6.47	10.59
DEVON	2,046	1,793	5.61	4.47	6.92	1,265	1,076	9.54	7.77	11.51
DORSET	1,286	1,105	6.60	5.06	8.40	809	690	6.93	4.95	9.34
GLOUCESTERSHIRE	1,431	1,259	3.83	2.69	5.26	929	789	7.62	5.76	9.81
NORTH SOMERSET	524	459	6.49	4.28	9.32	376	312	7.86	4.49	12.44
PLYMOUTH TEACHING	820	713	6.43	4.50	8.81	513	437	8.06	5.55	11.15
SOMERSET	1,452	1,260	6.69	5.27	8.33	842	740	5.38	3.66	7.56
SOUTH GLOUCESTERSHIRE	596	518	6.40	4.31	9.05	342	300	6.06	3.51	9.57
SWINDON	499	416	9.01	6.40	12.15	257	216	5.73	2.89	9.94
TORBAY CARE TRUST	456	398	6.82	4.42	9.90	294	249	9.42	5.92	13.89
WILTSHIRE	1,015	891	5.26	3.72	7.18	630	534	8.31	5.95	11.15



Five year survival: South West

South West



Five year survival: Yorkshire and the Humber

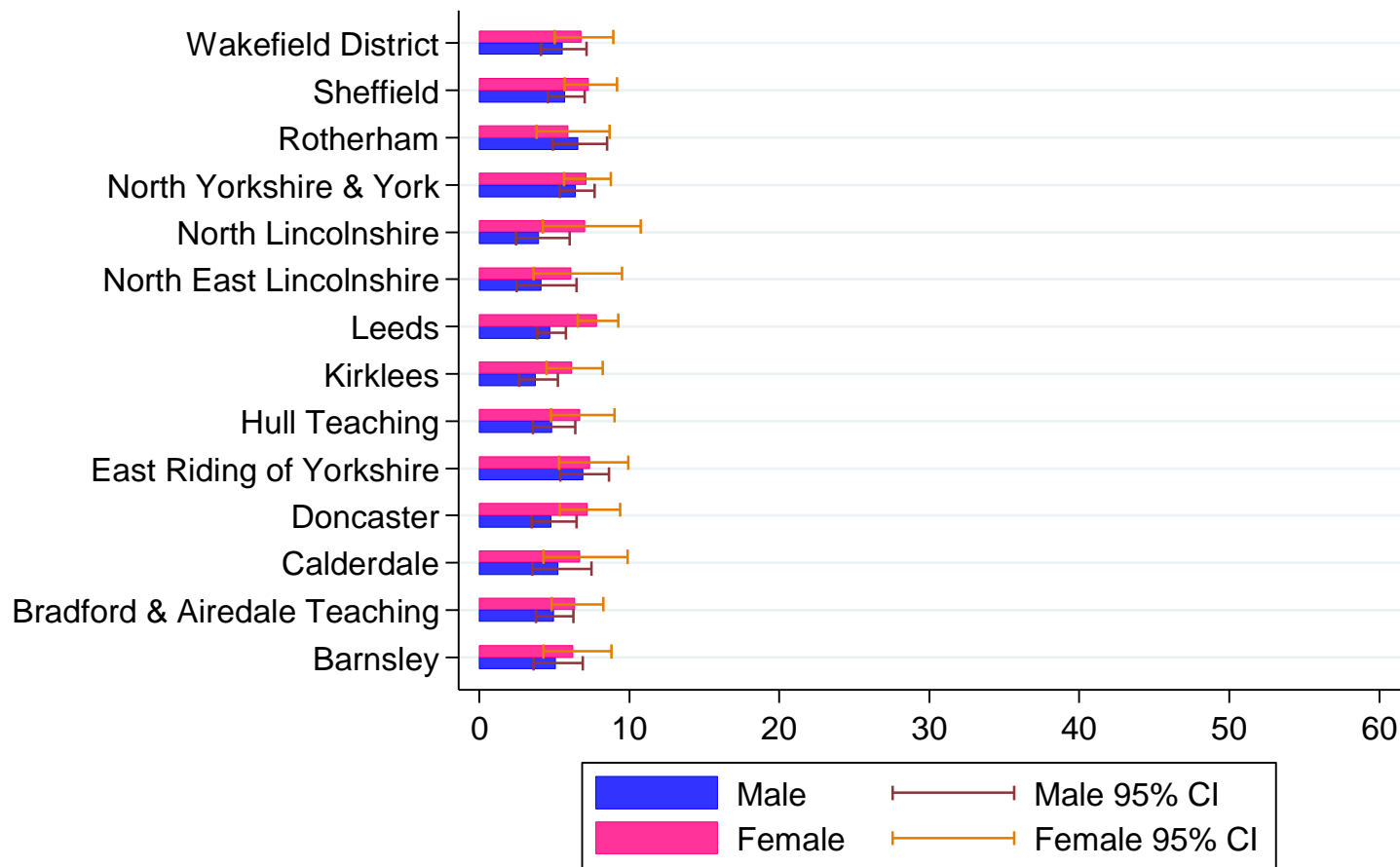
Five year cancer survival, Yorkshire and the Humber, 1998-2006, by sex and PCT

Yorkshire and the Humber	Male					Female				
	No. at risk	Deaths	Cumulative Survival (%)	95% CI		No. at risk	Deaths	Cumulative Survival (%)	95% CI	
				Lower	Upper				Lower	Upper
PCT										
BARNSELEY	934	835	5.07	3.60	6.88	645	565	6.27	4.27	8.79
BRADFORD AND AIRES DALE TEACHING	1,653	1,469	4.93	3.78	6.28	1,212	1,035	6.39	4.81	8.28
CALDERDALE	693	613	5.26	3.52	7.49	465	404	6.71	4.27	9.89
DONCASTER	1,307	1,148	4.84	3.49	6.50	868	747	7.20	5.36	9.39
EAST RIDING OF YORKSHIRE	1,215	1,061	6.92	5.41	8.66	775	649	7.41	5.32	9.94
HULL TEACHING	1,244	1,115	4.85	3.58	6.39	838	725	6.69	4.79	9.02
KIRKLEES	1,284	1,167	3.79	2.65	5.24	940	822	6.19	4.50	8.24
LEEDS	2,847	2,532	4.75	3.86	5.77	2,246	1,919	7.84	6.58	9.25
NORTH EAST LINCOLNSHIRE	591	531	4.16	2.49	6.48	352	311	6.11	3.62	9.51
NORTH LINCOLNSHIRE	603	539	3.95	2.43	6.03	378	323	7.03	4.24	10.75
NORTH YORKSHIRE AND YORK	2,414	2,090	6.45	5.34	7.69	1,673	1,420	7.09	5.64	8.76
ROTHERHAM	1,002	879	6.56	4.92	8.51	636	546	5.95	3.84	8.70
SHEFFIELD	1,984	1,748	5.72	4.58	7.03	1,373	1,149	7.31	5.68	9.19
WAKEFIELD DISTRICT	1,257	1,116	5.51	4.13	7.15	972	828	6.82	5.04	8.95



Five year survival: Yorkshire and the Humber

Yorkshire and the Humber



Acknowledgment

This paper is a contribution from the National Cancer Intelligence Network (www.ncin.org.uk) and is based on the information collected and quality assured by the regional cancer registries in England (www.ukacr.org).



THAMES
CANCER
REGISTRY