

Cancer Outcomes and Services Dataset

Breast Clinical Leads Workshop
5th May 2011

Trish Stokes, NCIN

Cancer Datasets

- Sept 2012

- Cancer Registration Dataset – *mandated for several years*
- Going Further on Cancer Waits – Jan 2009
- Radiotherapy – April 2009
- *Chemotherapy (SACT) – April 2012*
- *Diagnostics Project – April 2012*
- *Recurrent Breast Cancer – April 2012*
- **Cancer Outcomes and Services Dataset – Sept 2012**
- *(RC Pathology – Professional/Clinical Standards)*
- *(RC Radiology – Professional/Clinical Standards)*
- National Audits

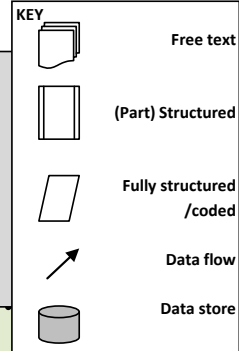
COSD features

- The new national cancer dataset
- Secondary uses
- Components
 - Core (Registration and Cancer Waits)
 - Site specific (cf nat audit)
 - Key pathology (core RCPATH)
- Monthly submission
- Monthly feedback
- Aligned and standardised
- Multiple data sources

COSD Dataset

Dataset Section	COUNT
Core (with additions)	143
Breast	30
CNS	16
Colorectal	30
CTYA	66
Gynae	41
Haematology	60
Head & Neck	44
Lung	19
Sarcoma	16
Skin	70
Upper GI	166
Urology	30
COSD	731

COSD

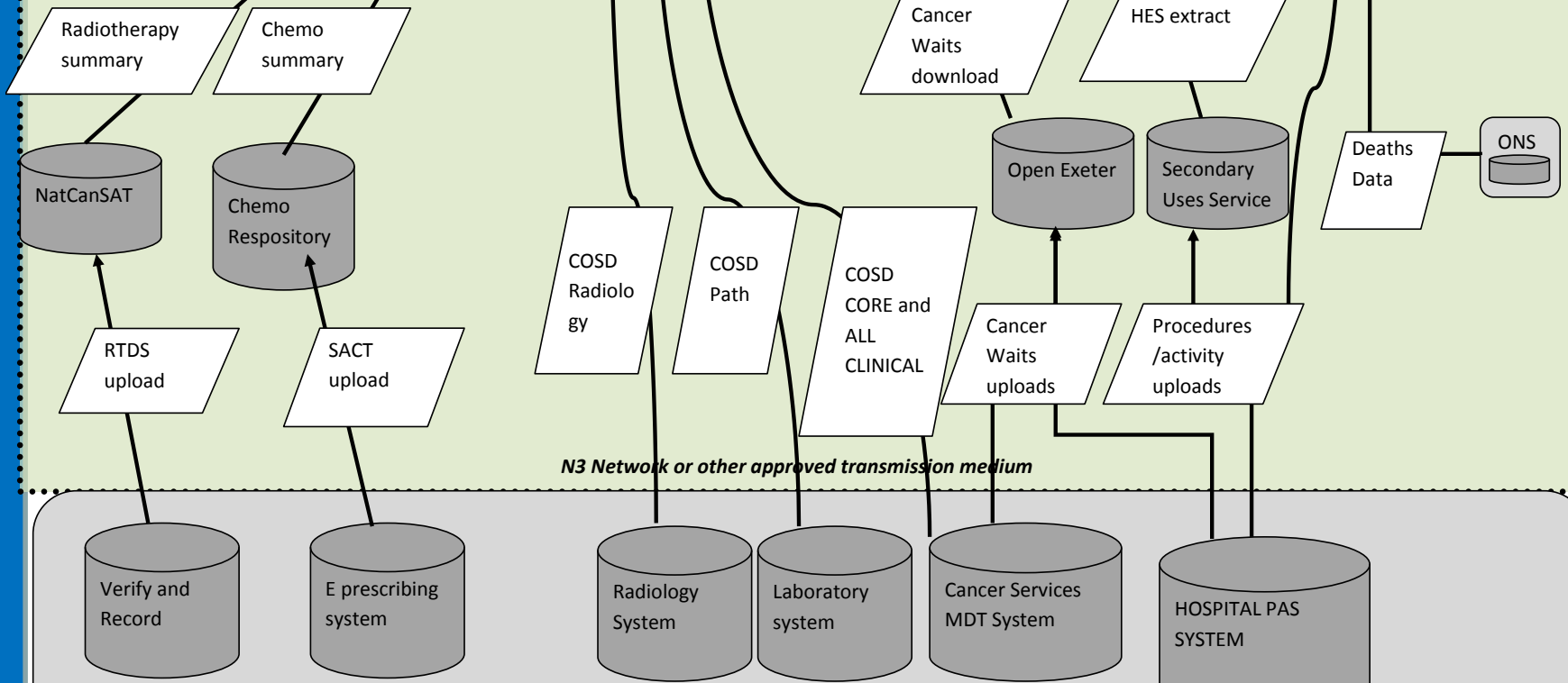


CANCER REGISTRY

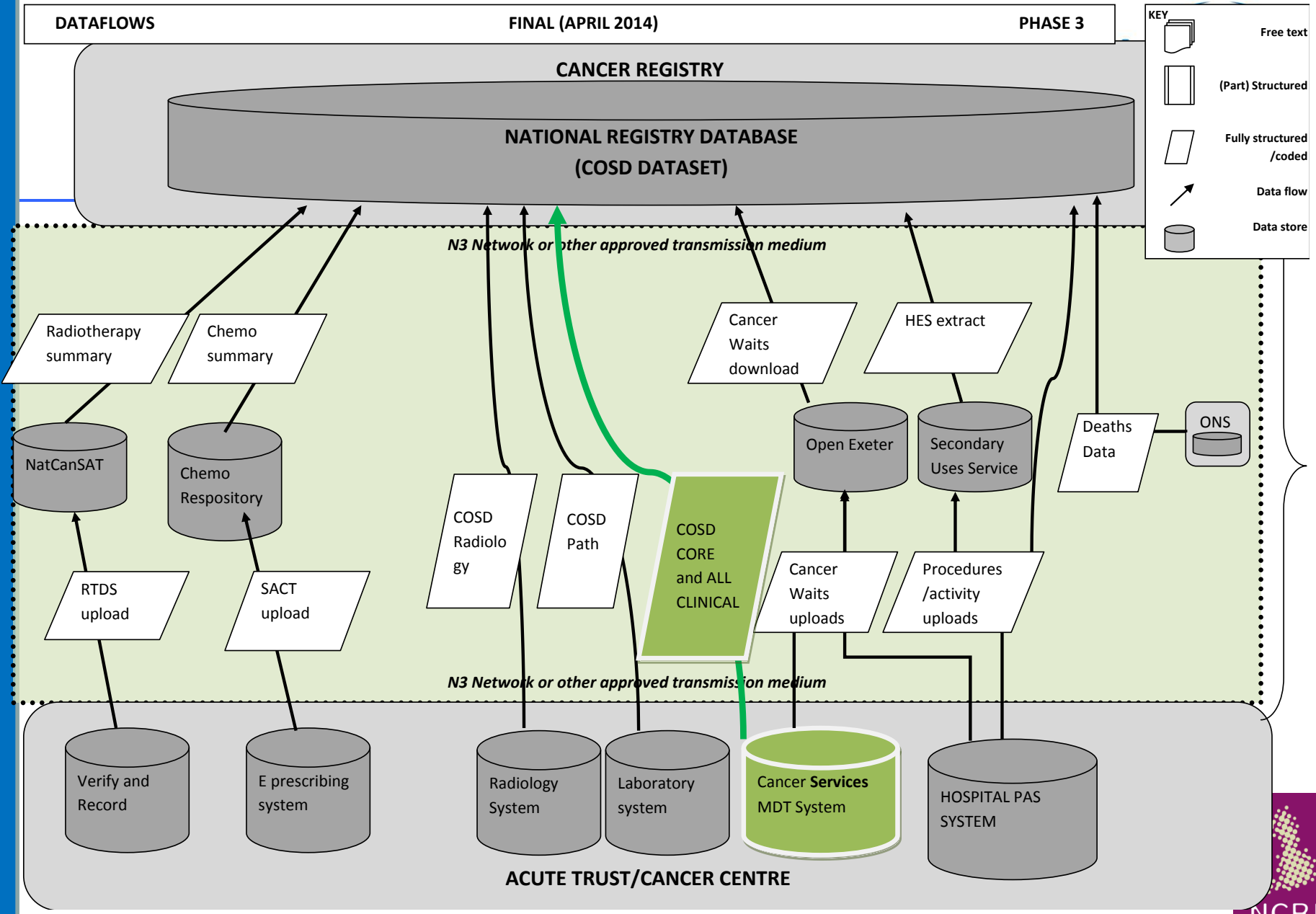
NATIONAL REGISTRY DATABASE (COSD DATASET)

N3 Network or other approved transmission medium

N3 Network or other approved transmission medium



ACUTE TRUST/CANCER CENTRE

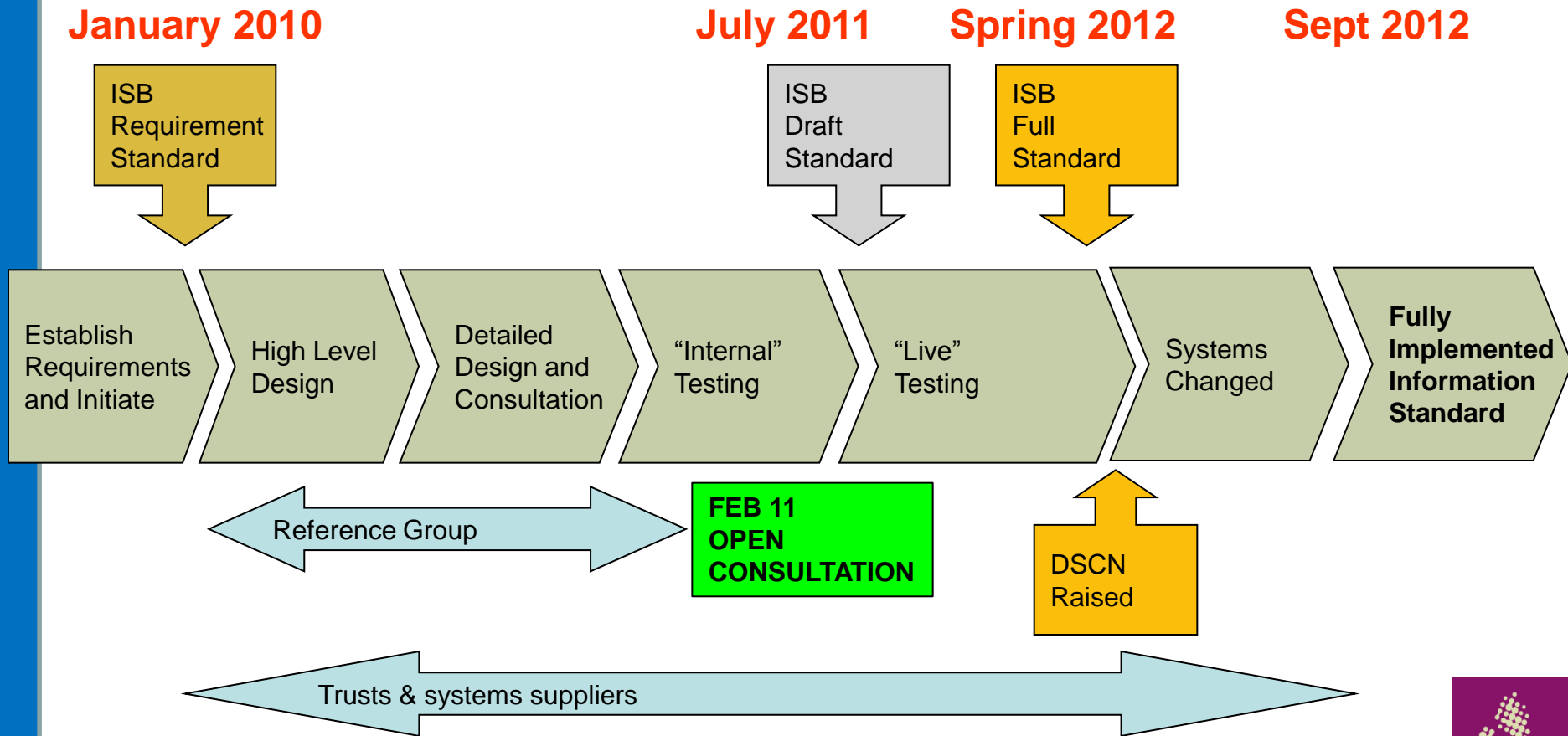


Using information to improve quality & choice

The last twelve months

- Core dataset reviewed
- Additional core items identified
- Site specific datasets agreed by Clinical Reference Groups
- First draft COSD dataset
- MDT Software Suppliers Day
- Work begun with RC Pathologists and RC Radiologists on clinical content
- Definitional testing (incl key path for staging)
- Open consultation

ISB Process – Where are we now?

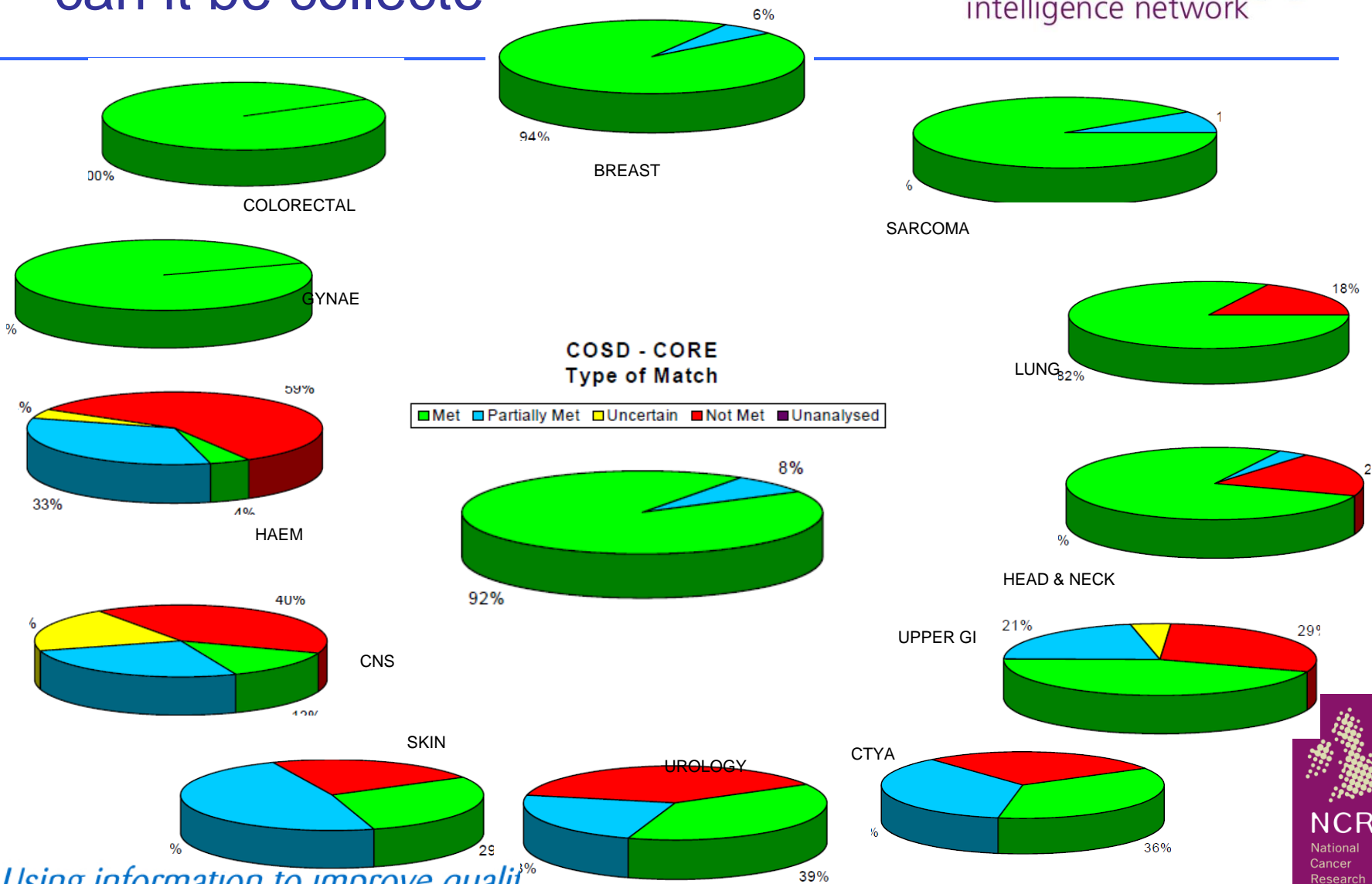


Definitional testing – general feedback

- Support for
 - cohesive and consistent dataset
 - clear and comprehensive guides
- Concerns
 - increased burden of collection
 - need for clinical involvement

A mixed bag

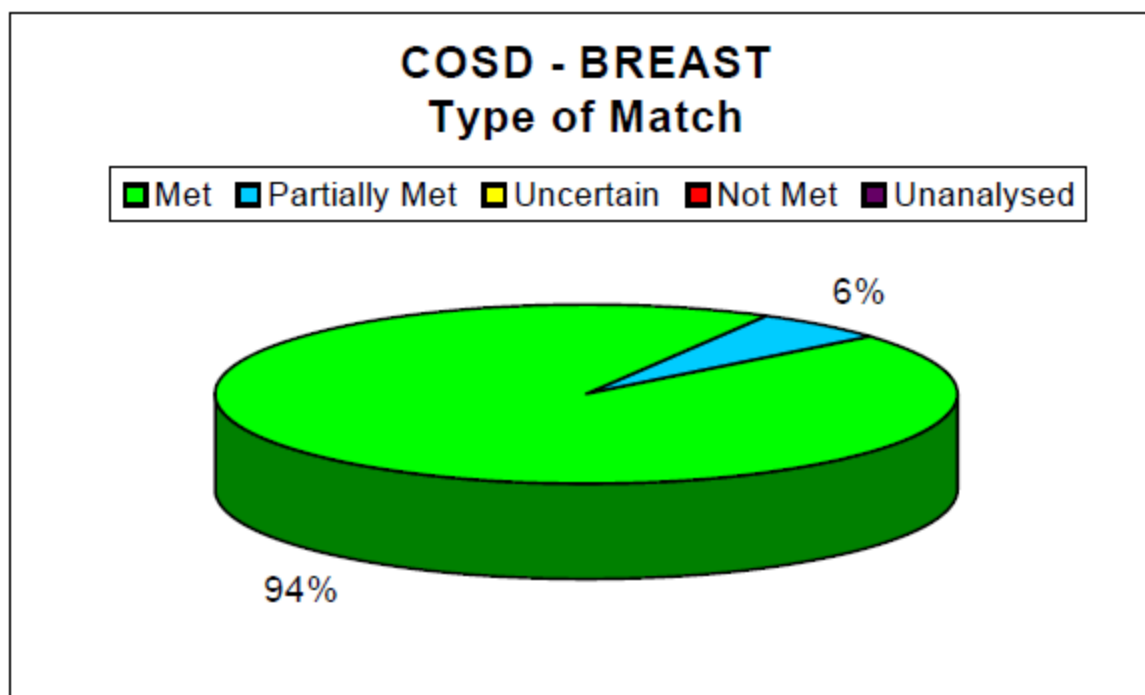
- can it be collected?



Using information to improve quality & choice

Definitional testing reports – can the systems collect the data?

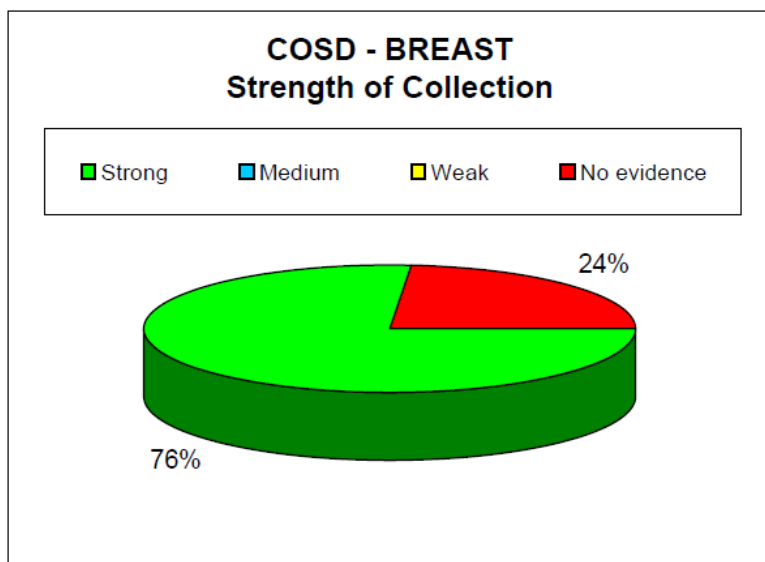
Number of COSD Breast Data Items	17
Number of Sites Analysed	5



Definitional testing reports – are the data items collected?

? Not collected

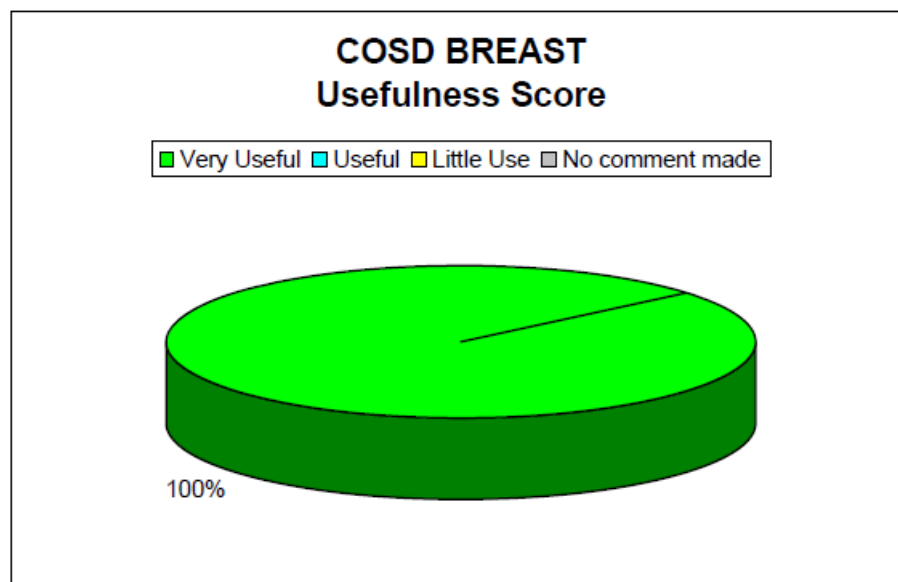
- ASA SCORE
- METASTATIC SITE (AT DIAGNOSIS)
- MULTI FOCAL/SYNCHRONOUS TUMOURS
- NPI SCORE
- **Could/do you collect these?**



Number of COSD Breast Data Items
Number of sites that submitted information

17
2

Definitional testing reports – are the data items useful?



Number of COSD Breast Data Items	17
Number of sites that submitted information	5

Pathology data items?

- 13 items - tested at 1 Trust site (using Somerset)
- All items can be collected on existing systems although may need minor amendments to values
- DCIS grade
- INVASIVE GRADE (BREAST)
- DCIS SIZE
- WHOLE TUMOUR SIZE
- MICROMETASTASES
- DISTANCE TO MARGIN
- ER STATUS
- ER ALLRED SCORE
- CYTOLOGY (BREAST)
- CYTOLOGY (NODE)
- NEEDLE CORE BIOPSY(BREAST)
- NEEDLE CORE BIOPSY (NODE)
- HER2 STATUS

Consultation feedback

- 90 responses in total
- Breast – 11 responses
 - 4 clinical (surgeon, pathologist, radiologist, CNS)
 - 3 admin/managerial
 - 2 voluntary sector
 - 1 software supplier
 - 1 unknown

- **Data Item queries:**
- DCIS grade – should this be non invasive grade (incl LCIS)
- NPI SCORE – Should all Trusts record this?
- ER STATUS – why isn't PR Status included?
- DISTANCE TO MARGIN – Should this be circumferential margin

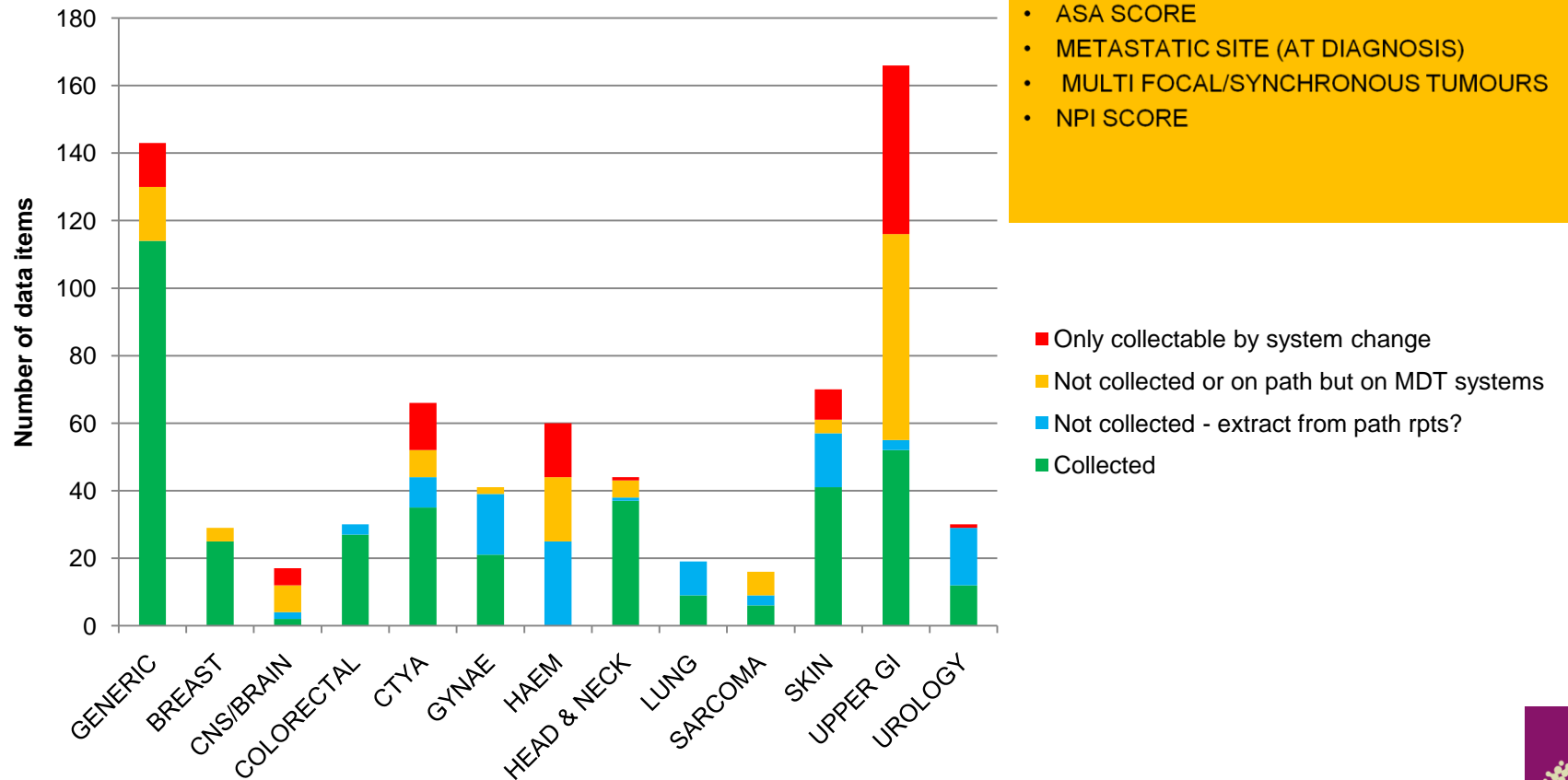
- **Standardise Values**
- MAMMOGRAPHY RESULT – Amend R3 value to “Indeterminate”
- US OF BREAST RESULT – Amend U3 value to “Indeterminate”
- CYTOLOGY (BREAST) – Separate C1a ? and C1b “Unsatisfactory”; Amend C2 value to “Normal/Benign” and C3 value to “Equivocal”
- CYTOLOGY (NODE) - Separate C1a ? and C1b “Unsatisfactory”; Amend C2 value to “Normal/Benign” and C3 value to “Equivocal”
- NEEDLE CORE BIOPSY(BREAST) – Amend B1 to “Normal”
- NEEDLE CORE BIOPSY (NODE) – clarify codes and values

Phased implementation – which approach

- By Trust?
- By Tumour site?
- By data item?

- generic/Breast items in Phase 1?

Implementation - State of readiness



Using information to improve quality & choice



Phased implementation

- Phase 1: Sept 2012:
 - Collected now (or on path reports) - but monthly
- Phase 2: Sept 2013?
 - Could be collected – changes to process (items on MDT software)
- Phase 3: Sept 2014?
 - Further work needed - Changes to process and software
- All breast and generic items in Phase 1?

Useful links

NHS Information Centre (dataset)

Datasets@ic.nhs.uk

NCIN

www.ncin.org.uk

trish.stokes@nhs.net

Driley@nhs.net